

Brady Road Resource Management Facility Community Liaison Committee

Monday, October 20, 2014

Role of Community Liaison Committee

Committee members will provide advice on:

- the development of the landscaping plan as set out in Clause 21 of the Licence
- the extent and frequency of noise and odour monitoring required in Clause 41 of the Licence
- measures to mitigate the impact of construction and operational activities on the local environment

Goals of the Committee

- Work collaboratively
- Enhance the quality of life for residents who are directly impacted by landfill activities
- Ensure Winnipeg's waste diversion remains a key focus in our short-term and long-term visions

Brady Road Resource Management Facility

- Opened in 1973 as the Brady Road Landfill
- Is the City of Winnipeg's only active landfill
- Has a life expectancy of more than 100 years
- Was renamed in 2013 to reflect the shift in focus from mostly garbage disposal, to the beneficial reuse of as much material as possible
- was granted an Environmental Licence by Manitoba Conservation and Water Stewardship on April 23, 2014

Winnipeg's Waste Diversion Increasing

- Winnipeggers are throwing away less garbage
 - 2011 waste diversion rate: 18.1%
 - 2013 waste diversion rate: 28.1%
- Winnipeggers are recycling more
 - 2013 saw a 17% increase in the amount of recyclables collected compared to 2011
- Waste diversion fee
 - Funds new programs that provide residents with more ways to reduce, reuse and recycle

Progress to Mitigate the Impact of Construction and Operational Activities on the Local Environment

Current activities

- Methane gas collection system
- Leaf and yard waste composting
- Surface water management
- Leachate management
- Litter control

Progress to Mitigate the Impact of Construction and Operational Activities on the Local Environment

Activities under development

- Landfill cell construction
 - engineered liner installed for leachate collection and control
- Silt fences will be used to protect the water
- 4R Winnipeg Depot construction
 - materials that would normally be landfilled will be separated and recycled, reused, resold or composted
- Closing the active residential tipping face
- Biosolids composting

Noise and Odour Monitoring and Control

Current activities

- Promptly cover waste material known to cause odours
- Collect and flare landfill gas
- Control leachate
- Install biofilters on manholes that create excessive odour

Noise and Odour Monitoring and Control

Activities under development

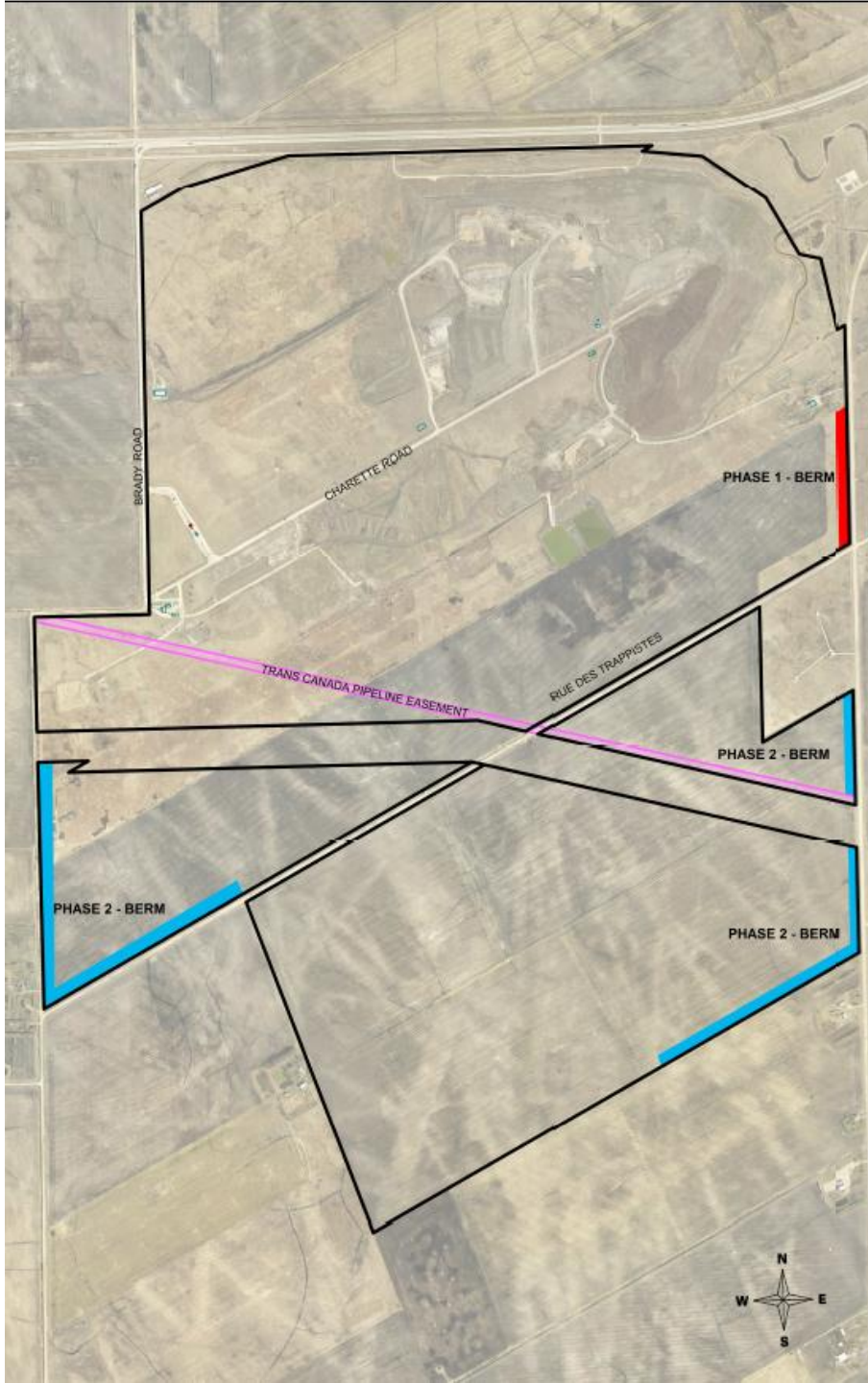
- Will purchase a professional decibel meter to measure noise levels
- Construction activities to move south of highway
- Landscaping plan may minimize noise to a standard of 75 decibels at property line

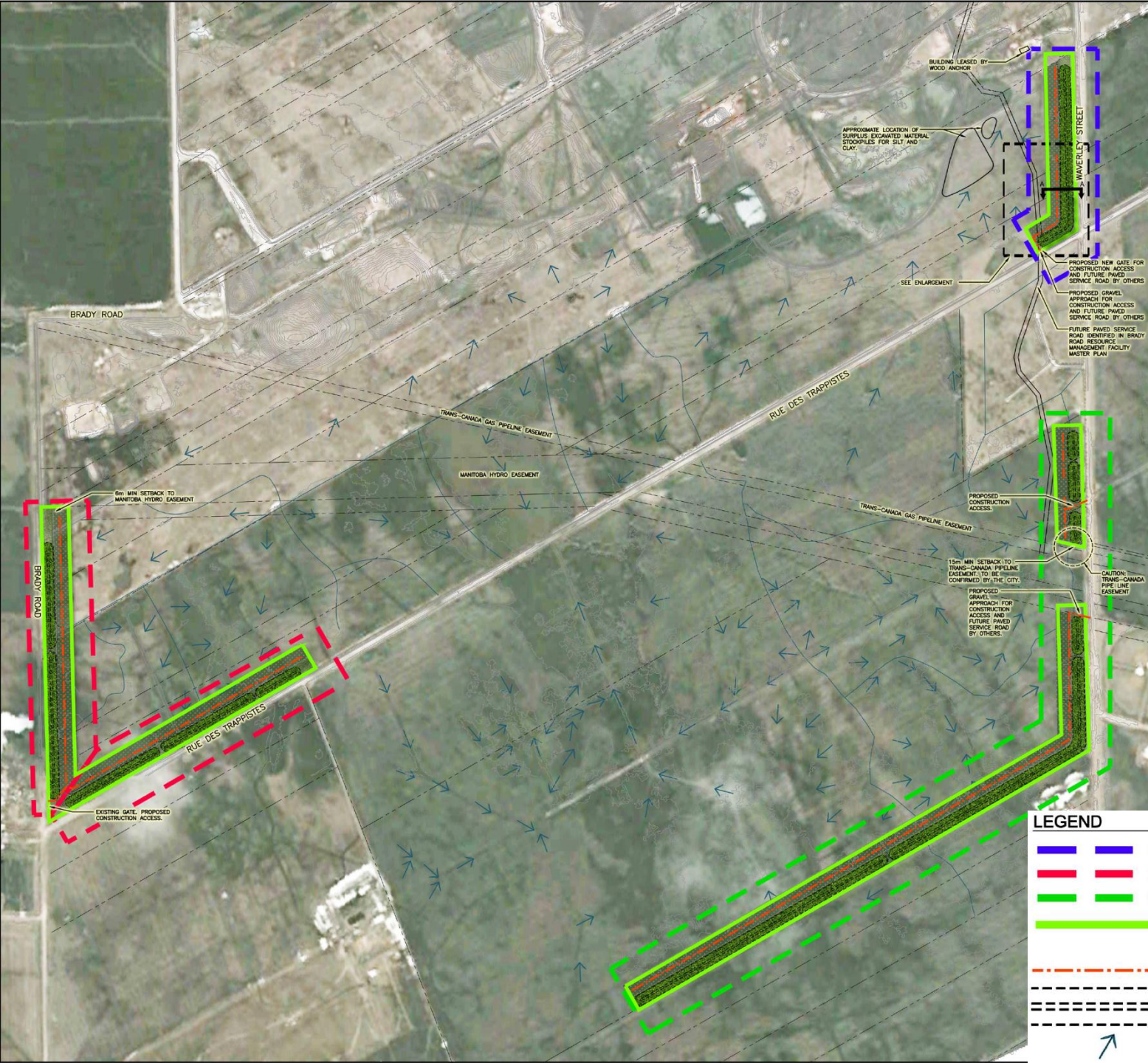
Lime Mud Berm Construction

- On September 24, 2014, Winnipeg City Council approved the plan to construct lime mud berms at Brady Road Resource Management Facility
- Approximately 500,000 cubic metres of lime mud, the remaining material from the sugar refining process, will be transported from the former Sugar Beets plant site, located northwest of Pembina Highway and Bishop Grandin Blvd, to Brady and used to construct berms

Lime Mud Berm Construction cont'd

- The berms will:
 - be 3 metres high
 - be built at the perimeter of Brady
 - act as an odour, noise and visual buffer
- Phase 1 berm, along Waverley Street, will be constructed in 2014
- Phase 2 berms are planned to be constructed in 2015





APPROXIMATE LOCATION OF SURPLUS EXCAVATED MATERIAL STOCKPILES FOR SILT AND CLAY.

BUILDING LEASED BY WOOD ANCHOR

SEE ENLARGEMENT

PROPOSED NEW GATE FOR CONSTRUCTION ACCESS AND FUTURE PAVED SERVICE ROAD BY OTHERS
 PROPOSED GRAVEL APPROACH FOR CONSTRUCTION ACCESS AND FUTURE PAVED SERVICE ROAD BY OTHERS
 FUTURE PAVED SERVICE ROAD IDENTIFIED IN BRADY ROAD RESOURCE MANAGEMENT FACILITY MASTER PLAN

BRADY ROAD

RUE DES TRAPPISTES

TRANS-CANADA GAS PIPELINE EASEMENT

MANITOBA HYDRO EASEMENT

0m MIN SETBACK TO MANITOBA HYDRO EASEMENT

TRANS-CANADA GAS PIPELINE EASEMENT

15m MIN SETBACK TO TRANS-CANADA PIPELINE EASEMENT TO BE CONFIRMED BY THE CITY.

PROPOSED GRAVEL APPROACH FOR CONSTRUCTION ACCESS AND FUTURE PAVED SERVICE ROAD BY OTHERS

CAUTION: TRANS-CANADA PIPE LINE EASEMENT

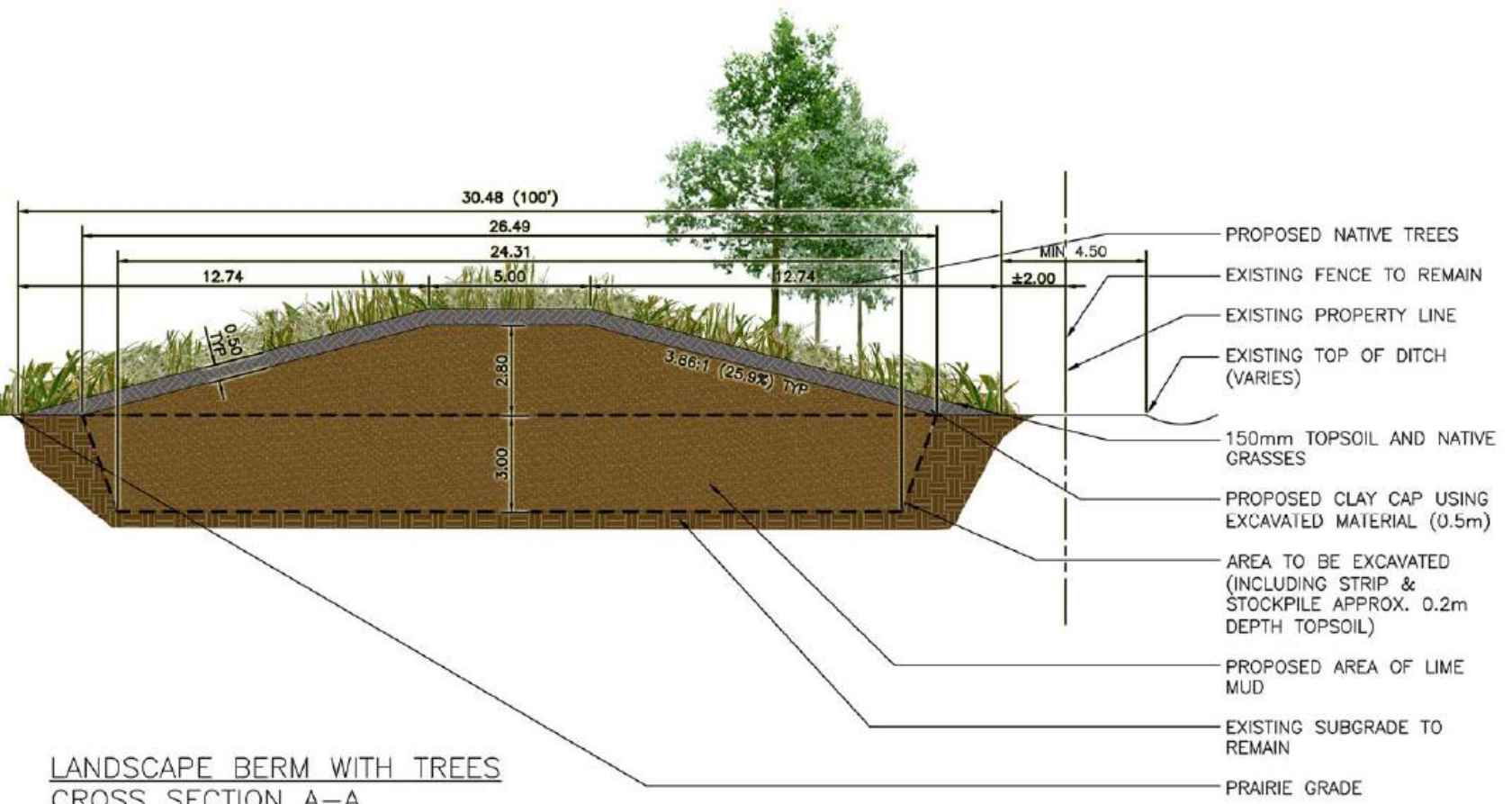
BRADY ROAD

RUE DES TRAPPISTES

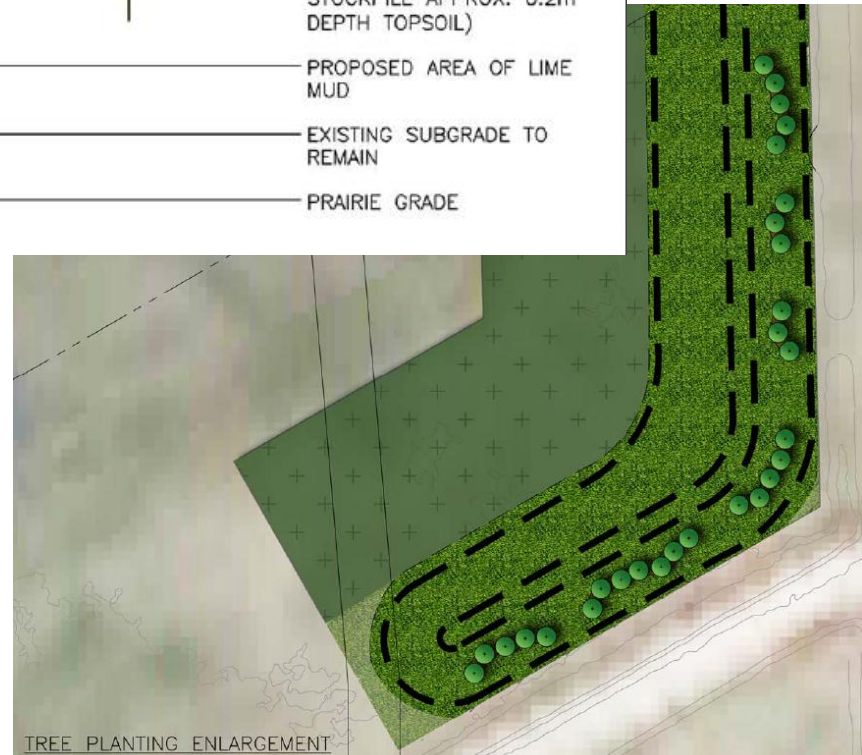
EXISTING GATE, PROPOSED CONSTRUCTION ACCESS.

LEGEND

- STAGE 1 – FALL 2014
- STAGE 2 – 2015
- STAGE 3 – 2015
- EXTENTS OF CONSTRUCTION ACTIVITY (WIDTH 70m FROM FENCE LINE)
- - - PROPOSED TRUCK ROUTE
- PROPOSED BERM
- ↗ EXISTING DRAINAGE PATTERNS



LANDSCAPE BERM WITH TREES
CROSS SECTION A-A



Brady Road Resource Management Facility Landscaping Plan

- Request for proposal was issued in May 2014 to develop a landscape management plan for Brady Road Resource Management Facility
- Nadi Design and Development was awarded the contract in July 2014
- The landscaping plan is due to the Province by December 23, 2014