



TRANSCONA PARKS OPEN HOUSE - WELCOME

Welcome to the Transcona Ward Open House on Parks and Playground Renewals for 2017 and Beyond

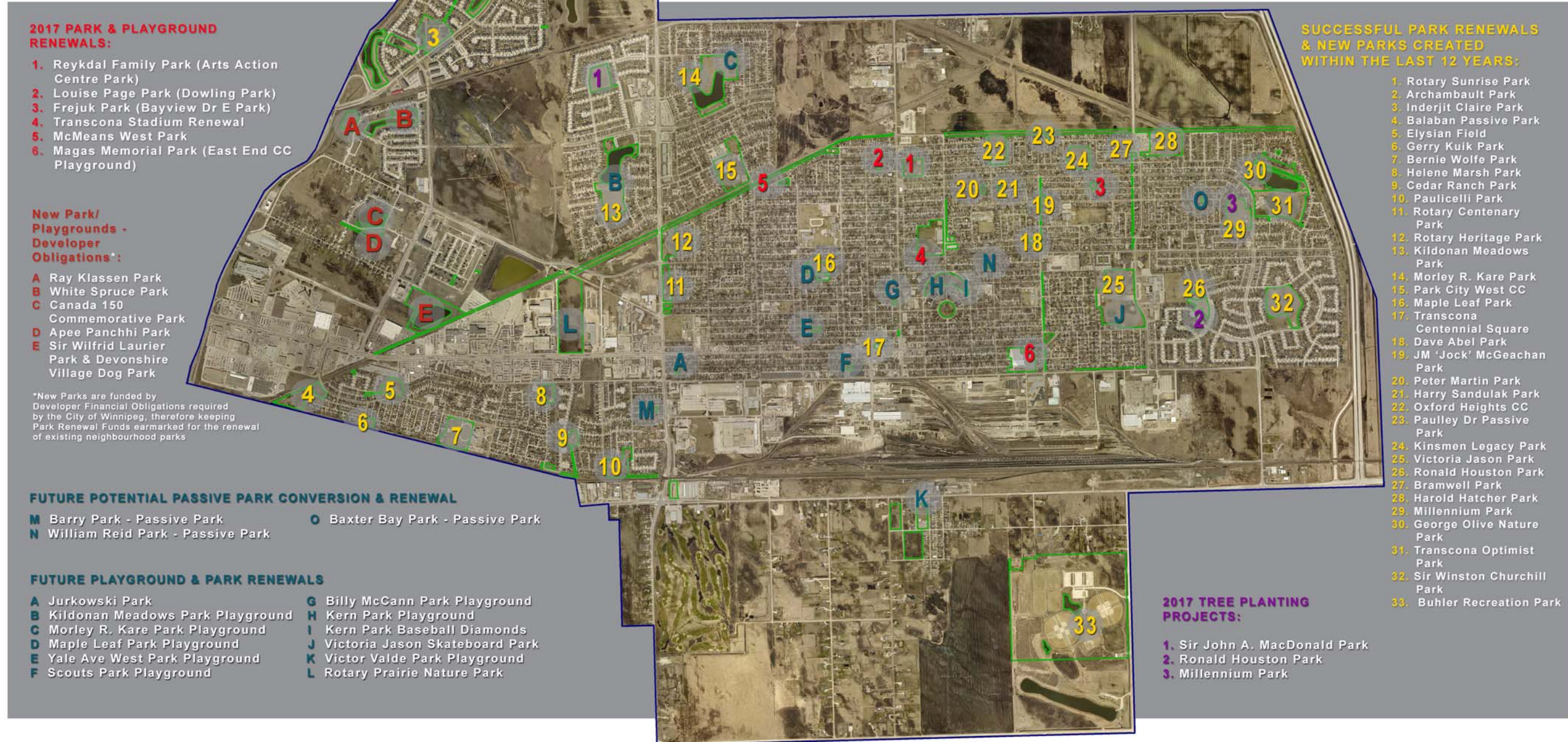
Transcona Parks are vibrant and are a critical component to building community. Our goal today is to inform you about upcoming projects and to obtain feedback on:

- plans for the parks and playgrounds to be renewed in 2017
- large tree planting projects planned for the upcoming year
- new parks and playgrounds that are being built in new residential developments
- future playground and park renewals
- successful park renewals within the last 12 years

Please feel free to explore the presentation boards provided, ask questions to City staff, provide feedback directly on each board by writing your comments on the supplied yellow sticky notes and placing them on the related board, and fill out the questionnaire. Feedback gathered today will be shared by email to those attending the Open House, as well as on the City of Winnipeg website.

Thank you for your attendance and feedback!

TRANSCONA PARKS





2014 - \$45,000 (Heritage Victoria CC)



2016 - \$60,000 (Teakwood Park)



2012 - \$65,000 (Dave Abel Park)



2015 - \$75,000 (Bret Bay Park)

**JUNIOR PLAY EQUIPMENT
2-5 YEAR OLDS**



2014 - \$45,000 (Olympic Park phase 2)



2014 - \$58,000 (Heritage Victoria CC)



2014 - \$112,000 (Harold Hatcher Park)



2013 - \$130,000 (John de Graff Park)

**SENIOR PLAY EQUIPMENT
5-12 YEAR OLDS**



2016 - \$75,000 (Essar Park)



2015 - \$80,000 (Chornick Park)



2015 - \$90,000 (Campion Park)

**MIXED AGES
2-12 YEAR OLDS**

EVALUATION OF THE PLAY EQUIPMENT DESIGN

(a) Compliance with CSA Standards (pass/fail);

(b) Play value:

- Gross Motor Play Experience(s) (Climbing, overhead components, etc.)
- Imaginative/ Cognitive Play Component(s), including fine motor skills
- Social / interpersonal interaction and cooperative play
- Motion Component(s)
- Sliding Component(s) - min. one for each age group
2-5 year old and 5-12 year old
- Variety of play Components

(c) Designed for inclusive play using Universal Design principles:

- Complies with section 2.3.5 of the 2015 City of Winnipeg Accessibility Design Standards (pass/fail)
- Layout for integration of the wheelchair accessible components
- Provision of tactile and auditory play experiences.
- Layout of the play area for persons with visual impairment

(d) Layout/Circulation:

- Flow and relationship between play area activities
- Layout / orientation of components on Site
- Orientation to provide good visibility to play area from adjacent roads
- Minimal amount of hollow plastic components to minimize vandalism
- Slide orientation - metal must face north or east

(e) Durability:

- Use of durable / tamper-resistant materials, low maintenance finishes and connector systems & ease of repair / replacement of the products used within the playground area.

* cost shown is for supply and install of play equipment, safety surfacing & edging only, does not include pathways, site furniture, signage or trees

SLIDING



IMAGINATIVE



SPINNING



MUSIC



COOPERATIVE



CLIMBING





IMPROVEMENTS INCLUDE:

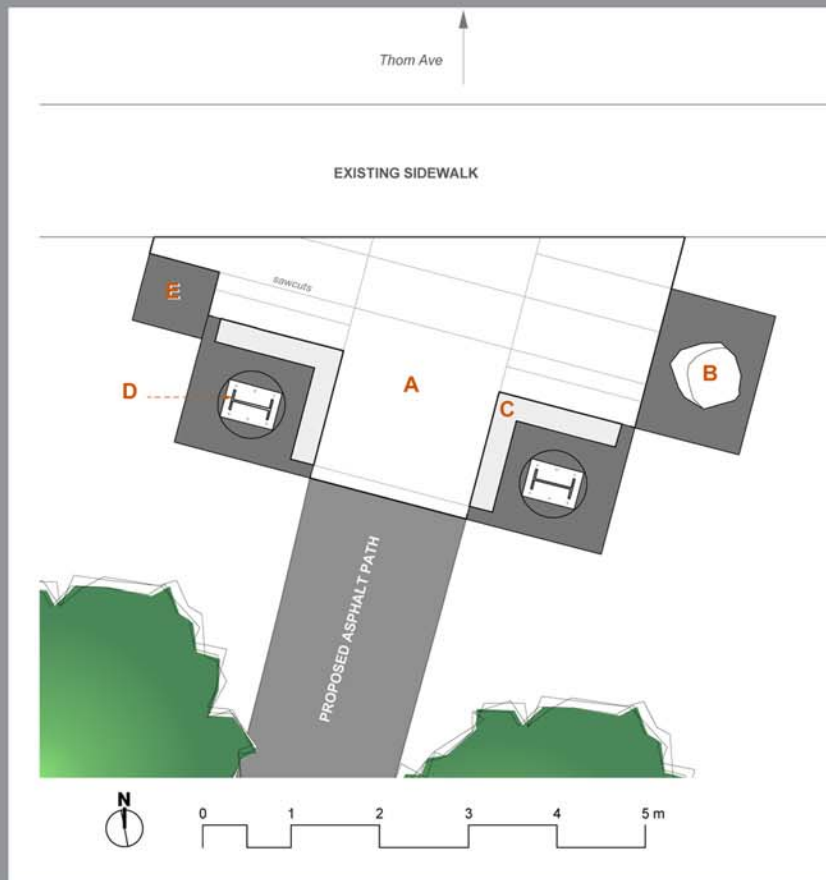
- swing set
- play structure
- benches & picnic table
- entry feature
- pathway
- new softball backstop
- trees
- junior soccer field
- mural on building
- new wood bollards



location of new playground



existing playstructure



PARK ENTRY PLAN

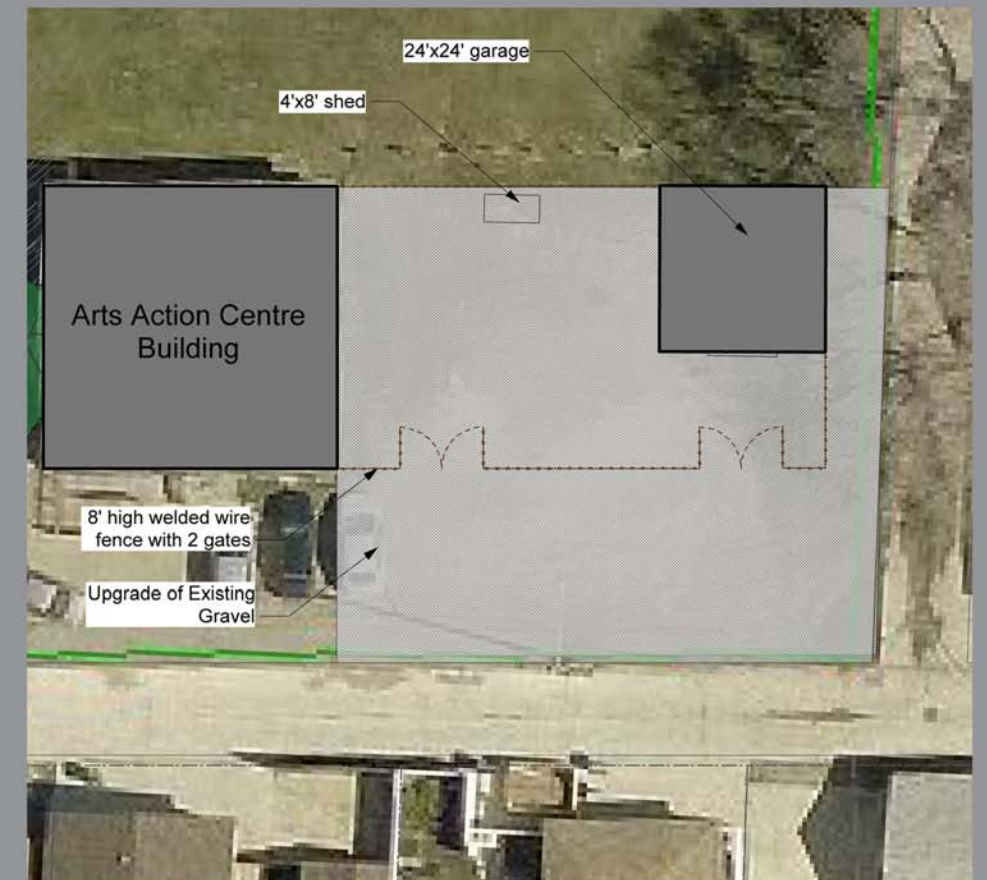
ENTRY FEATURE INCLUDES:

- A** concrete entry plaza
- B** granite boulder & dedication plaque
- C** free standing retaining wall
- D** custom cor-ten steel park sign
- E** perennial planting bed

PARKS YARD INCLUDES:

- 8' high welded wire fence
- upgrade of existing gravel
- small shed
- 24' x 24' garage

The Parks Yard allows Parks & Open Space to have a satellite yard to store mowing equipment to enable efficient and timely access to maintain park sites in the surrounding area.



PARK ENTRY SIGN



BIRD'S EYE VIEW



MURAL CONCEPT FOR ARTS ACTION BUILDING



WELDED WIRE FENCE



GARAGE CONCEPT

LOUISE PAGE PARK

(100 Block of Dowling Avenue West)

PLANNED
2017 PARK
WORK



EXISTING CONDITIONS



PROPOSED IMPROVEMENTS



SAMPLE SEATING AREA



IMPROVEMENTS INCLUDE:

- seating area
- boulder and plaque
- park sign
- perennial bed
- remove wood bollards along front street
- new bollards along side and back lane
- 9 deciduous trees
- 2 flowering trees
- 4 coniferous trees



400M PLAYGROUND BUFFER



IMPROVEMENTS INCLUDE:

- swing set
- play structure
- benches
- picnic table
- pathway
- fence
- trees

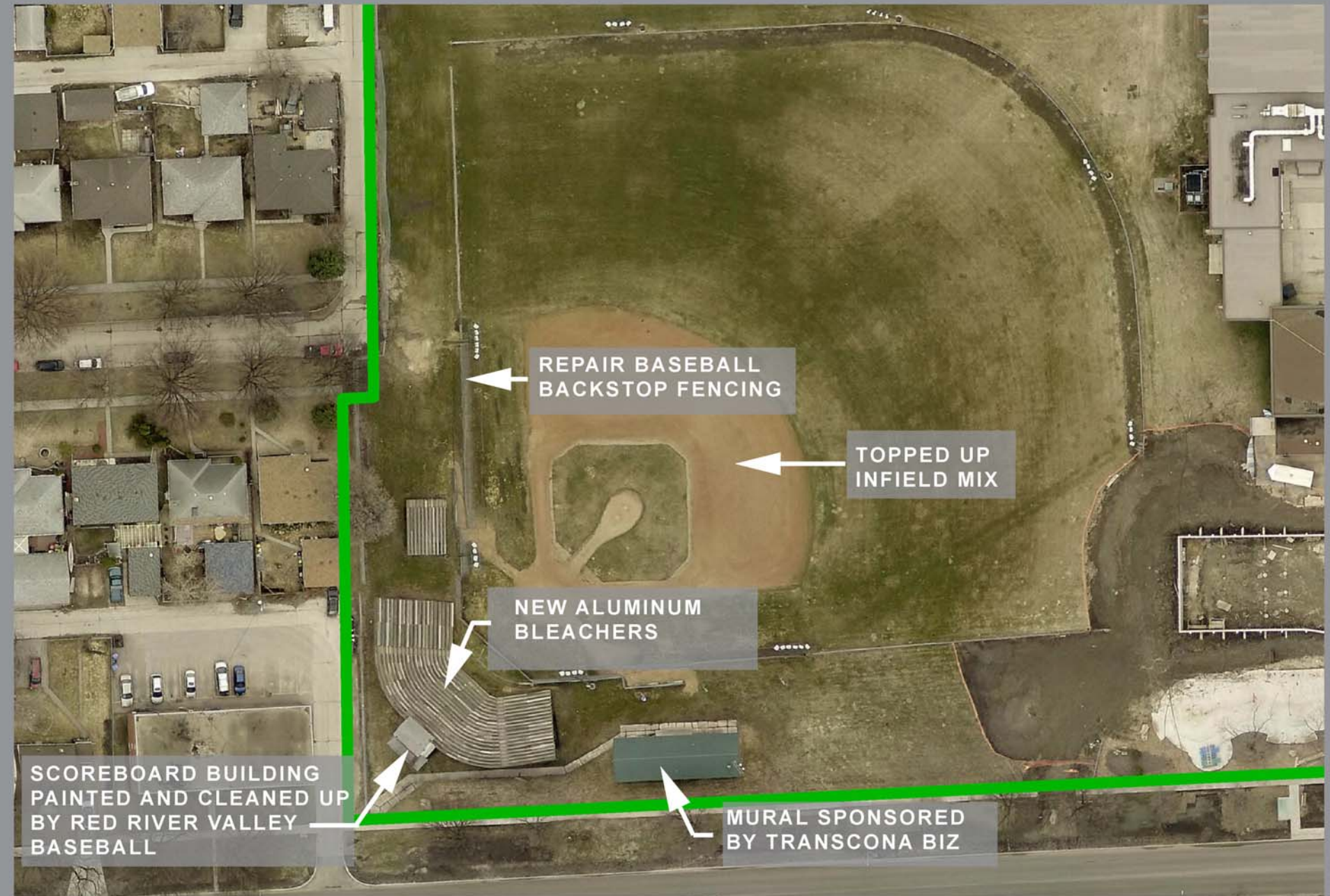




MURAL CONCEPT

IMPROVEMENTS INCLUDE:

- new aluminum bleachers
- repair baseball backstop fencing
- topped up infield mix
- mural on concrete building by Transcona Biz
- spruced up scoreboard building by Red River Valley Baseball





McMEANS PARK - EXISTING CONDITIONS



PARK CITY WEST CC RECENTLY REDEVELOPED PARK AND PLAYGROUND very close proximity

IMPROVEMENTS INCLUDE:

- A** bollard fence
- B** 2 benches
- C** regrading and new sod
- D** remove old chainlink fence
- E** trees
- F** cairn



MAGAS MEMORIAL PARK (EAST END CC PLAYGROUND)

PLANNED
2017 PARK
WORK



VIEW INTO ENTRY OF PARK



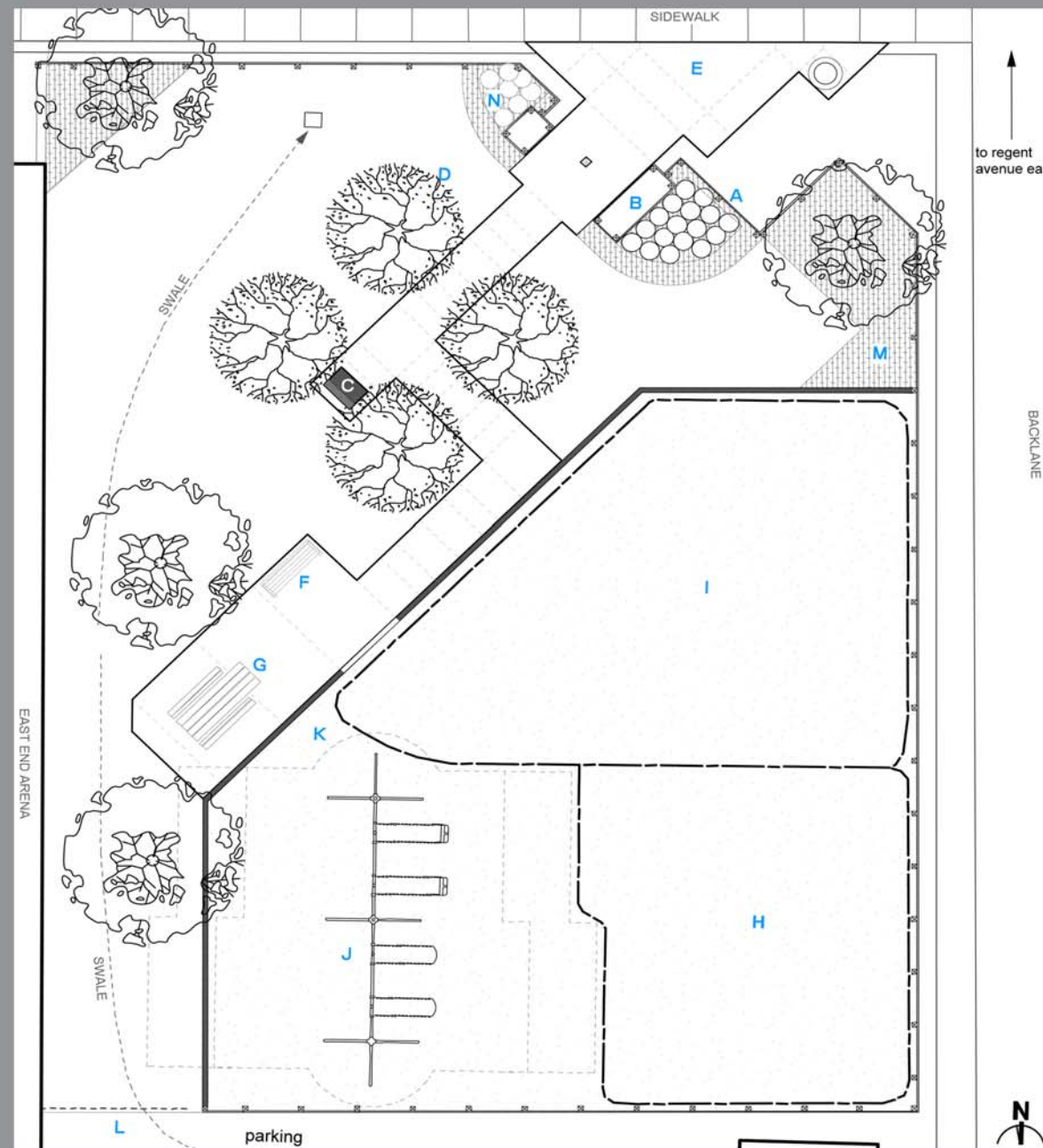
BIRDS EYE VIEW



VIEW INTO PARK FROM BACKLANE



VIEW FROM SEATING TO MEMORIAL PLAQUE AND TREES



IMPROVEMENTS INCLUDE:

- A** custom memorial wood fence
- B** custom memorial wood entry gates
- C** memorial plaque & tyndall stone plinth
- D** maple trees (x4) honouring the Magas brothers
- E** concrete pathway
- F** composite bench
- G** accessible picnic table
- H** 2-5 year old playstructure
- I** 5-12 year old playstructure
- J** 8' tall swing set
- K** safety surfacing
- L** vehicle access
- M** woodchip mulch
- N** ornamental grasses



ENTRY INTO BENY-SUR-MER CANADIAN WAR CEMETERY WHERE HARRY MAGAS WAS LAID TO REST



EXISTING SITE PHOTOS

TREE PLANTING PROJECTS

MILLENNIUM PARK, RONALD HOUSTON PARK,
SIR JOHN A. MACDONALD PARK

PLANNED
2017 PARK
WORK



MILLENNIUM PARK



RONALD HOUSTON PARK

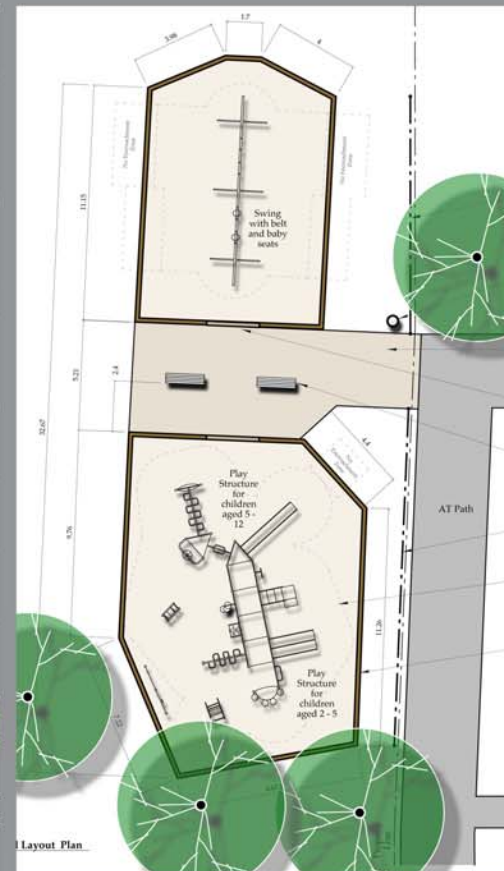


SIR JOHN A. MACDONALD PARK

IMPROVEMENTS INCLUDE:
- 38 deciduous trees
- 33 coniferous trees



RAY KLASSEN PARK



PLAYGROUND CLOSE UP



WHITE SPRUCE PARK



RAY KLASSEN PARK AMENITIES INCLUDE:

- soccer field
- swing set
- trees
- playstructure
- benches
- pathway

WHITE SPRUCE PARK AMENITIES INCLUDE:

- pathway
- pond
- trees
- bench



APEE PANCHHI PARK PLAYGROUND

KEY	QTY	COMMON NAME/BOTANICAL NAME	SIZE	REMARKS
DECIDUOUS TREES				
A	10	SILVER CLOUD MAPLE ACER SACCHARINUM 'SILVER CLOUD'	60mm cal.	SPECIMEN, B&B, MACHINE DUG WITH MIN. 10 BRANCHES IN WELL BRANCHED HEAD, STRAIGHT TRUNK, MIN. HT. 4.5m, BRANCHING HT. 1.5m
B	10	DAKOTA PINNACLE BIRCH BETULA PLATYPHYLLA 'FAIRGO'	60mm cal.	SPECIMEN, B&B, MACHINE DUG WITH MIN. 10 BRANCHES IN WELL BRANCHED HEAD, STRAIGHT TRUNK, MIN. HT. 6m, BRANCHING HT. 1.5m
C	8	MANCHURIAN ASH FRAXINUS MANDSHURICA 'MANGANA'	60mm cal.	SPECIMEN, B&B, MACHINE DUG WITH MIN. 10 BRANCHES IN WELL BRANCHED HEAD, STRAIGHT TRUNK, MIN. HT. 6m, BRANCHING HT. 1.5m
CONIFEROUS TREES				
D	7	FASTIGIATE SPRUCE PICEA PUNGENS 'ISLU FASTIGIATE'	60mm cal.	SPECIMEN, B&B, MACHINE DUG WITH MIN. 10 BRANCHES IN WELL BRANCHED HEAD, STRAIGHT TRUNK, MIN. HT. 6m, BRANCHING HT. 1.5m

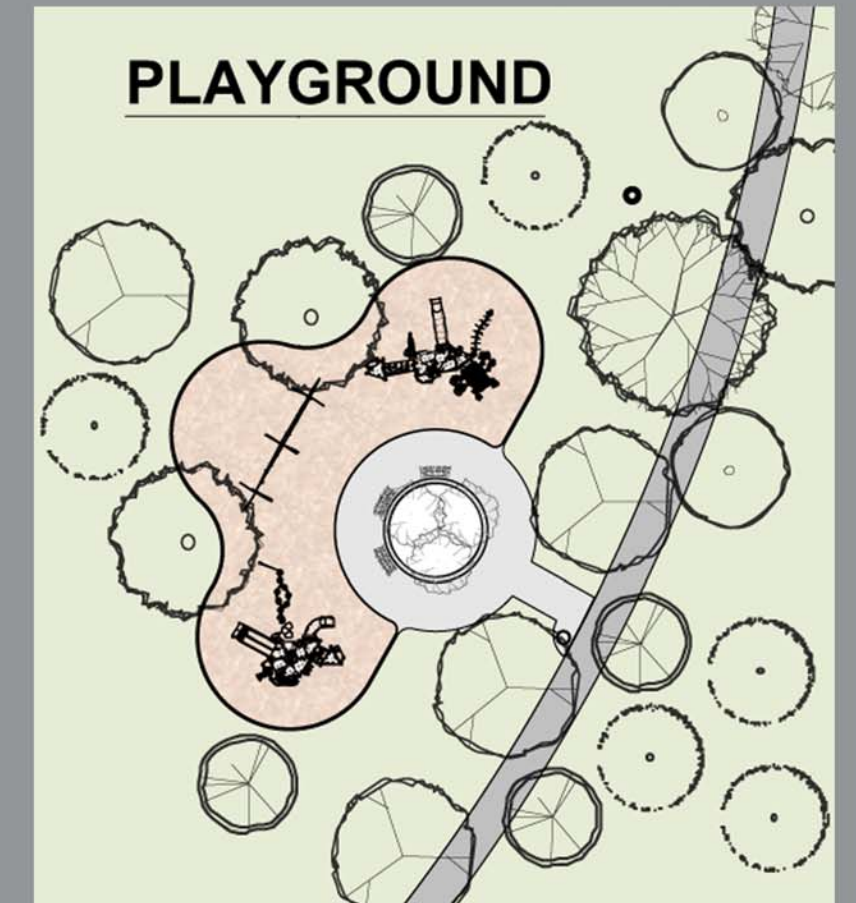
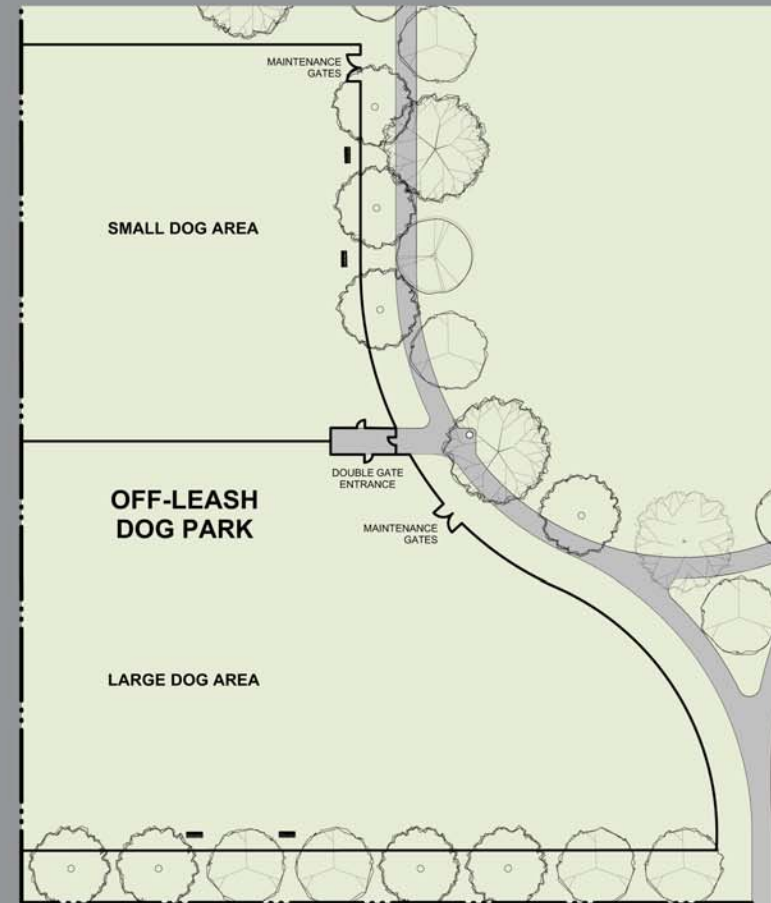
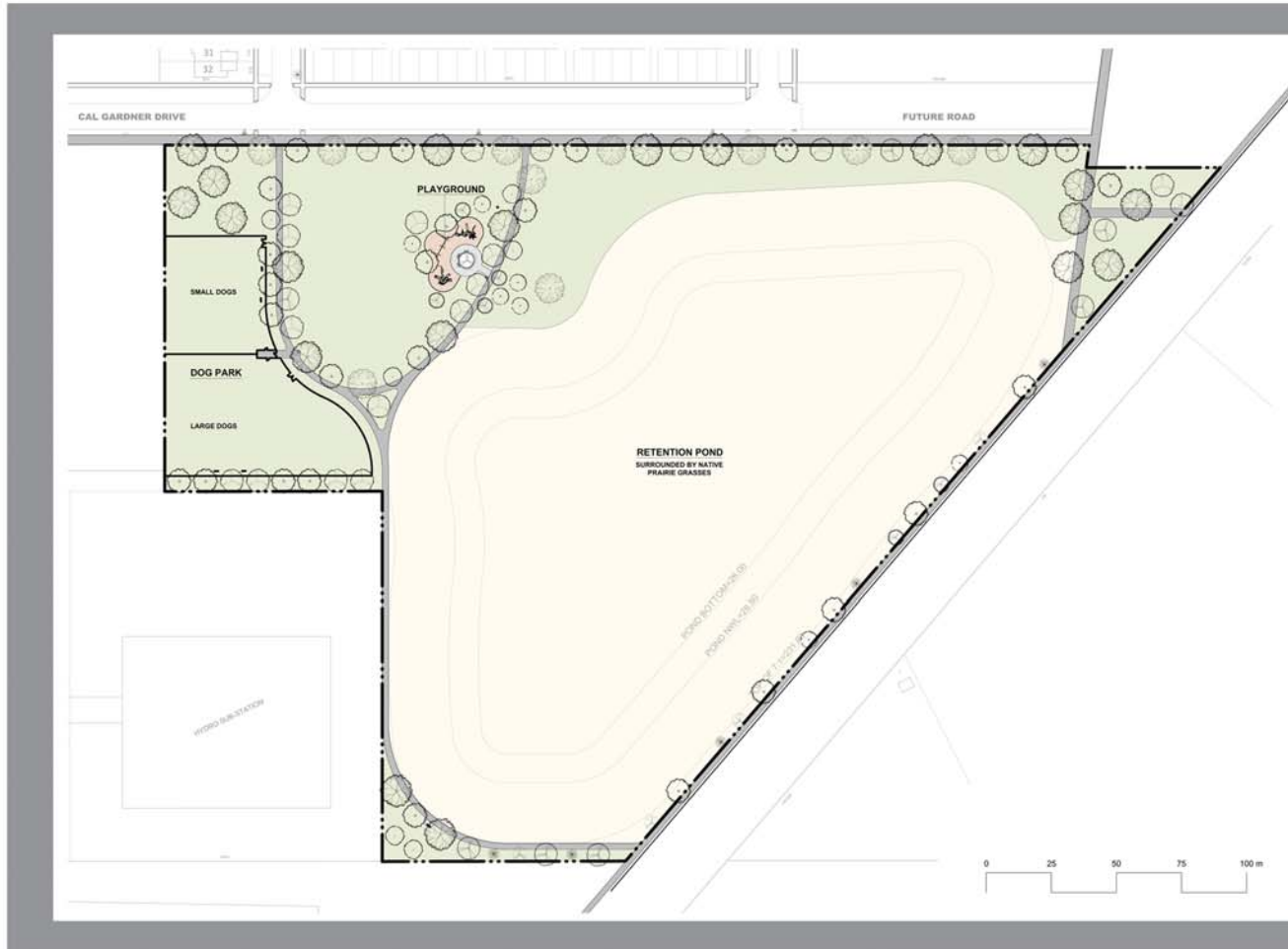


APEE PANCHHI PARK AMENITIES INCLUDE:

- 2-5 year old play structure
- 5-12 year old play structure
- swing set
- seating area
- trees
- fence

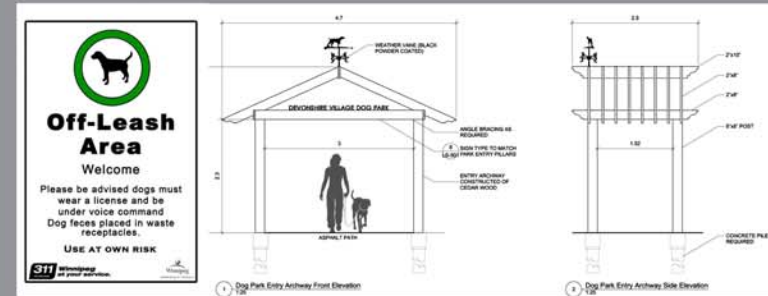
CANADA 150 COMMEMORATIVE PARK AMENITIES INCLUDE:

- pond
- seating areas
- trees



IMPROVEMENTS INCLUDE:

- pathways
- pond
- swing set
- play structures
- benches
- trees
- fenced off-leash dog park with separate small dog and large dog area and benches



**FUTURE
POTENTIAL
PASSIVE PARK
CONVERSION
& RENEWAL**



BARRY PARK EXISTING

PLAYGROUND SITES CLOSE BY:



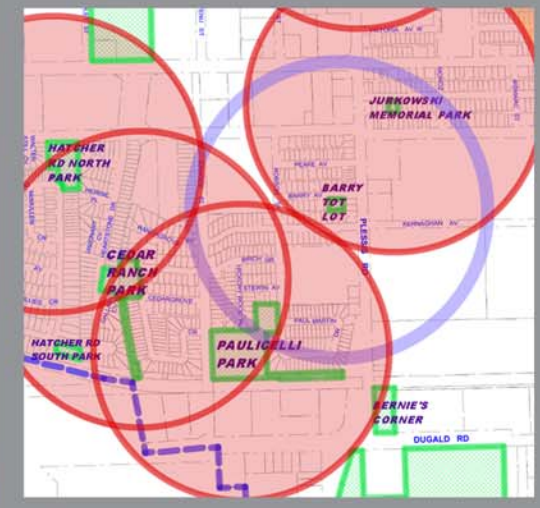
PAULICELLI PARK



HELENE MARSH PARK



CEDAR RANCH PARK



400M PLAYGROUND BUFFER



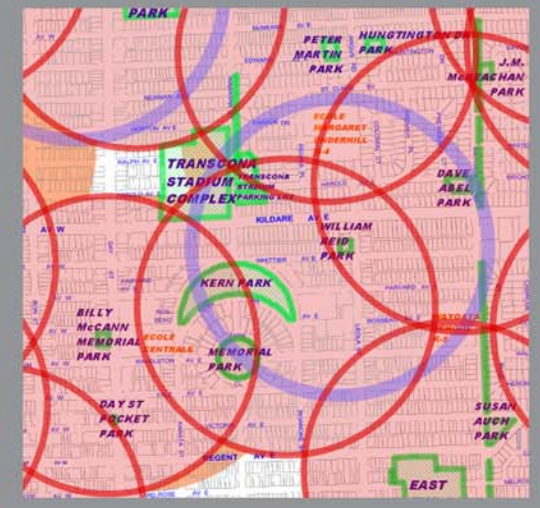
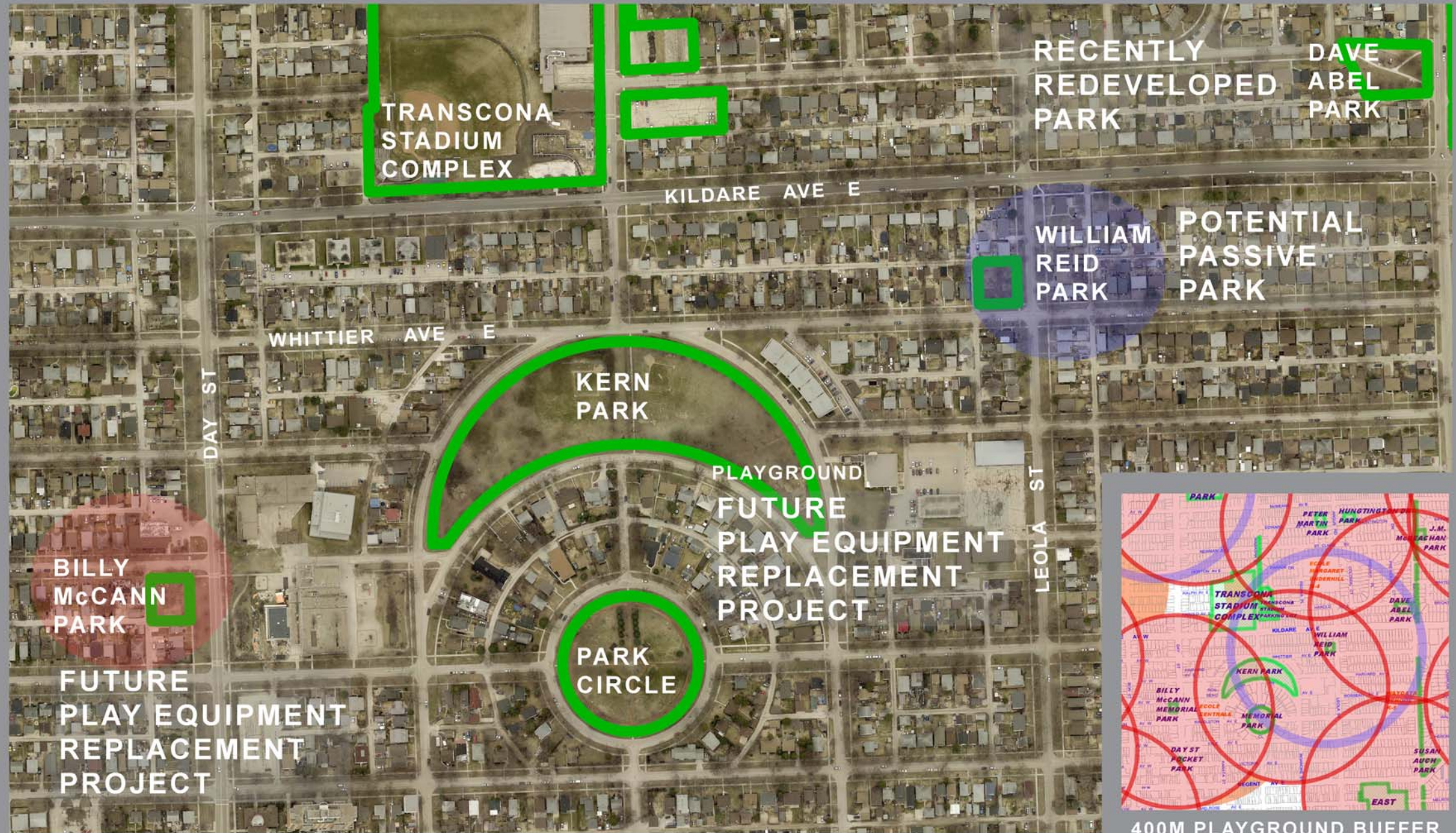
WILLIAM REID PARK EXISTING ENTRY & BEAUTIFUL MATURE TREES



BILLY McCANN PARK



KERN PARK PLAYGROUND



400M PLAYGROUND BUFFER



BAXTER BAY PARK EXISTING

PLAYGROUND SITES CLOSE BY:



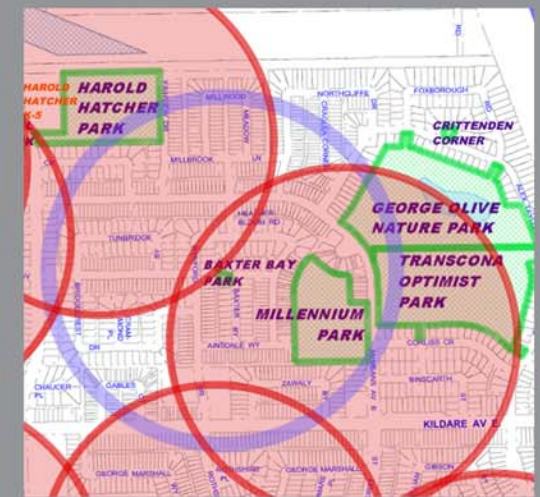
MILLENNIUM PARK



MILLENNIUM PARK



HAROLD HATCHER PARK



400M PLAYGROUND BUFFER



EXISTING SITE PHOTOS





EXISTING SITE PHOTOS





EXISTING SITE PHOTOS





EXISTING SITE PHOTOS

