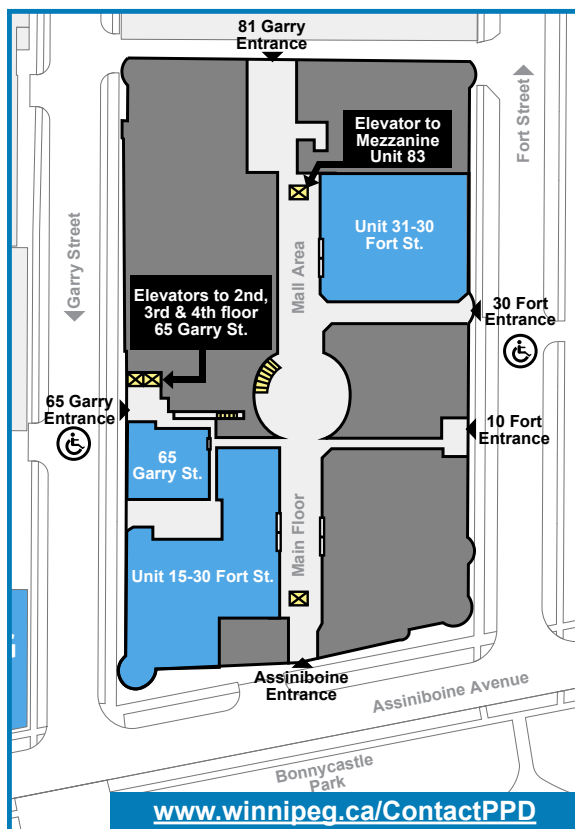


Planning, Property & Development Department
83 - 30 Fort Street Winnipeg, Manitoba R3C 4X7

www.winnipeg.ca/ppd



Planning, Property
and Development
Department

FREE-STANDING SIGNS STRUCTURAL REQUIREMENTS

**A guide to the structural
requirements for free-standing signs**

For more information contact:

204-986-5268

or



Planning, Property & Development Department
Unit 83 - 30 Fort Street
Winnipeg, Manitoba
R3C 4X7

www.winnipeg.ca/ppd

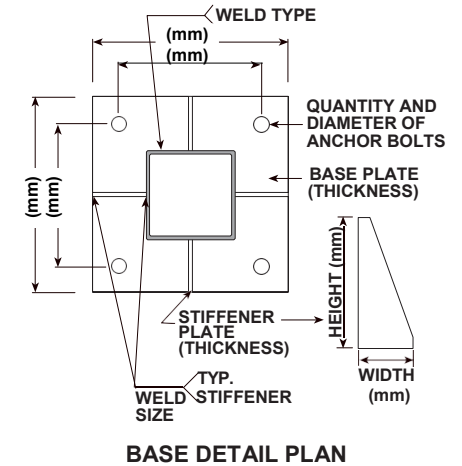
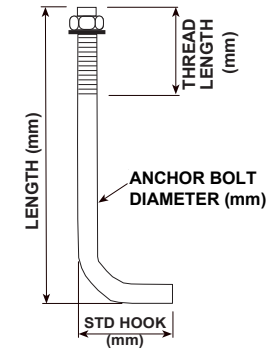
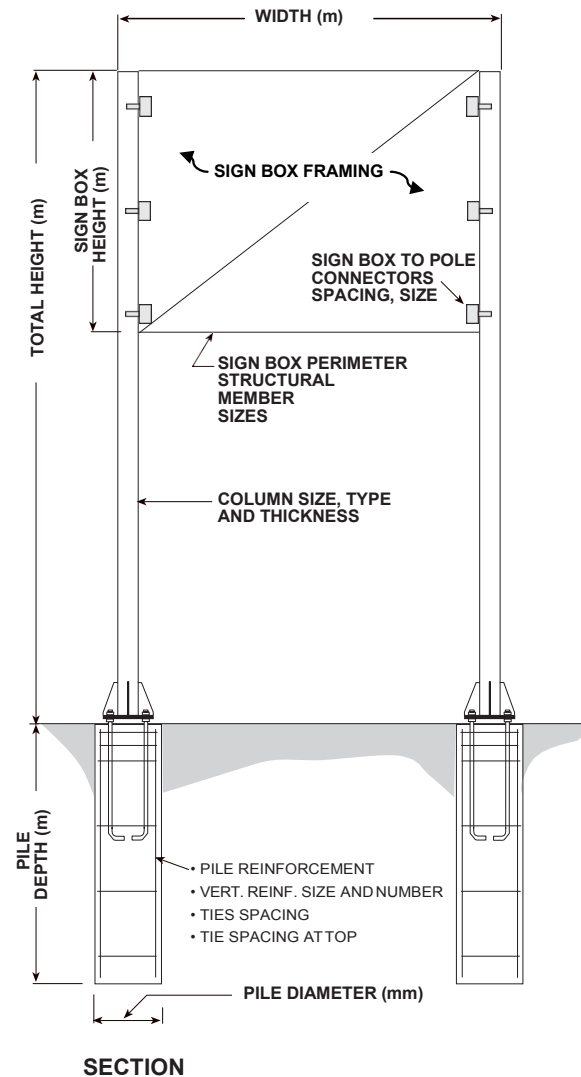
*Every effort has been made to ensure the accuracy
of information in this brochure. In the event of a
discrepancy between this booklet and the governing
City of Winnipeg By-law, the By-law will take
precedence.*

July 2018

FREE-STANDING SIGNS STRUCTURAL REQUIREMENTS

The following information shall be shown on the structural plans for free-standing sign permits:

- Pile size, diameter, depth and spacing
- Concrete strength (MPa) and cement type HS for S1 exposure
- Pole / Pylon / Column steel strength, size and type. If hollow steel section - then thickness shall be provided
- Base plate size, and thickness
- Anchor bolt type (ASTM), quantity, lengths and diameter
- Stiffener plates (if used)
- Weld type and thickness
- Pole height and sign box dimensions
- Sign box structural frame construction
- Sign box connection to poles / columns
- If connection is using bolts. then bolts size and diameter, if weld then weld size
- Signs using anchor bolts, welds, etc. shall be engineered and shall bear engineer's seal and signature
- Signs 2.1 m or more in height shall be engineered
- Signs with a surface area more than 3 m² shall be engineered
- The requirement to provide engineered plans rests with the Authority Having Jurisdiction



GENERAL NOTES:

- DESIGN WIND = (kPa)
- STEEL GRADE 350W
- ALL WELDING TO BE CSA W59
- ANCHOR BOLT YIELD STRENGTH (MPa)
- ANCHOR BOLT HOT DIP GALVANIZED
- CONCRETE PILE (MPa), CEMENT TYPE HS
- SOIL TYPE: SOFT, FIRM, STIFF
- SOIL LATERAL RESISTANCE CAPACITY (MPa/m)

SIGN ADDRESS:

**ENGINEER'S SEAL AND
SIGNATURE, DATE**