

Crystal Meth in Manitoba



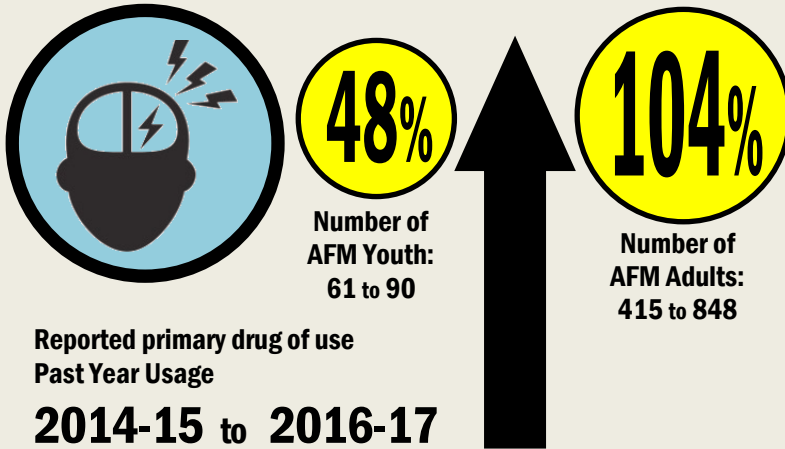
Within the last 3 years Crystal Meth (methamphetamine) use has increased dramatically in Manitoba. There is no clear evidence to explain these increases. Police sources have informed AFM that:

- Purity of the drug has increased
- Cost of the drug has dramatically decreased while the availability & marketing of Crystal Meth has increased

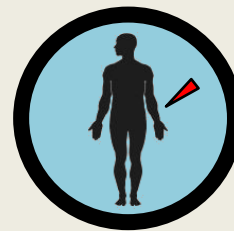
Crystal Meth is one of the amphetamine family of stimulants, and is one of the more commonly used amphetamines. The drug has the most intense effect on the brain of any street stimulant. Compared to smoking Crystal Meth, injecting the drug can be more intense.

All of these factors contribute to larger numbers of users and more extreme behaviours such as aggression & psychosis.

Significant rise in reported Amphetamine use



Injection Drug Use (IDU) - AFM*



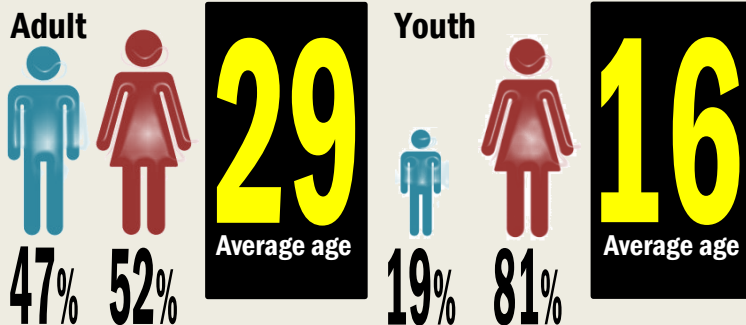
Between 2011 & 2017 past year IDU significantly increased or DOUBLED for AFM ADULT clients**

From 2014-2016 YOUTH life time IDU rates almost DOUBLED from 3.6% to 6.8%

*includes all drugs ** based on type of program

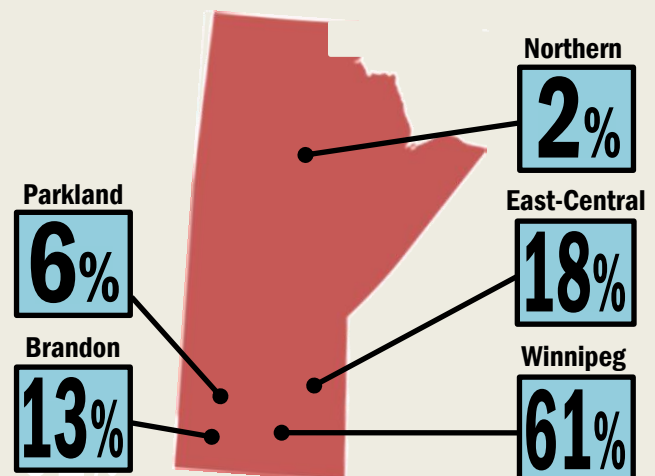
Gender & Age - AFM

Average % of clients reporting Amphetamine as primary drug of use 2014-15 to 2016-17



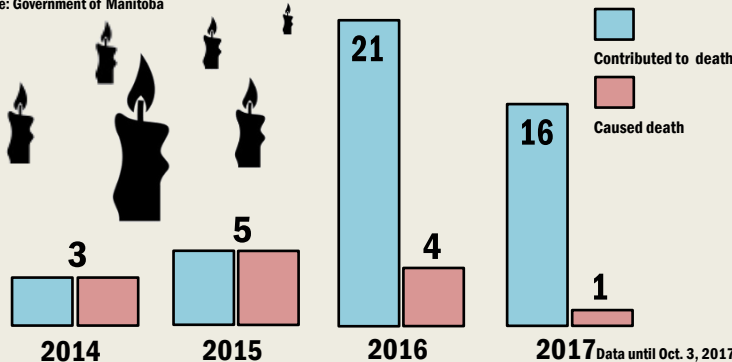
Amphetamine use in Manitoba - AFM

Areas - % of clients reporting Amphetamines as primary presenting issue 2014-15 to 2016-17



Manitoba deaths related to Amphetamines

Source: Government of Manitoba



Massive ER "Meth" visits increase

Source: Winnipeg Regional Health Authority



1700%

monthly increase 2013 - 2017
January 2013 - 10 visits - December 2017 - 180 visits*

*Approximations - includes Concordia Hospital, Grace Hospital, HSC Adult, Seven Oaks General Hospital, St Boniface General Hospital, Victoria General Hospital, Misericordia Health Centre

What is AFM Doing ?



- Collaborating with primary health care in providing services to patients experiencing harms due to amphetamine use
- Modifying programming to meet the needs of clients & their family & friends
- Providing staff, stakeholders & the public - education, research & evidence
- Providing training to frontline staff
- Engaging with staff & stakeholders in identifying gaps & improving services for individuals experiencing harms due to amphetamine use

Research:

Iceland has significantly decreased substance use among youth. The decline is associated with a targeted state led plan that includes replacing drug use with the "natural highs" of sports and other activities. The community development model brings together parents, schools, communities & other sectors to improve the well-being of children & youth.