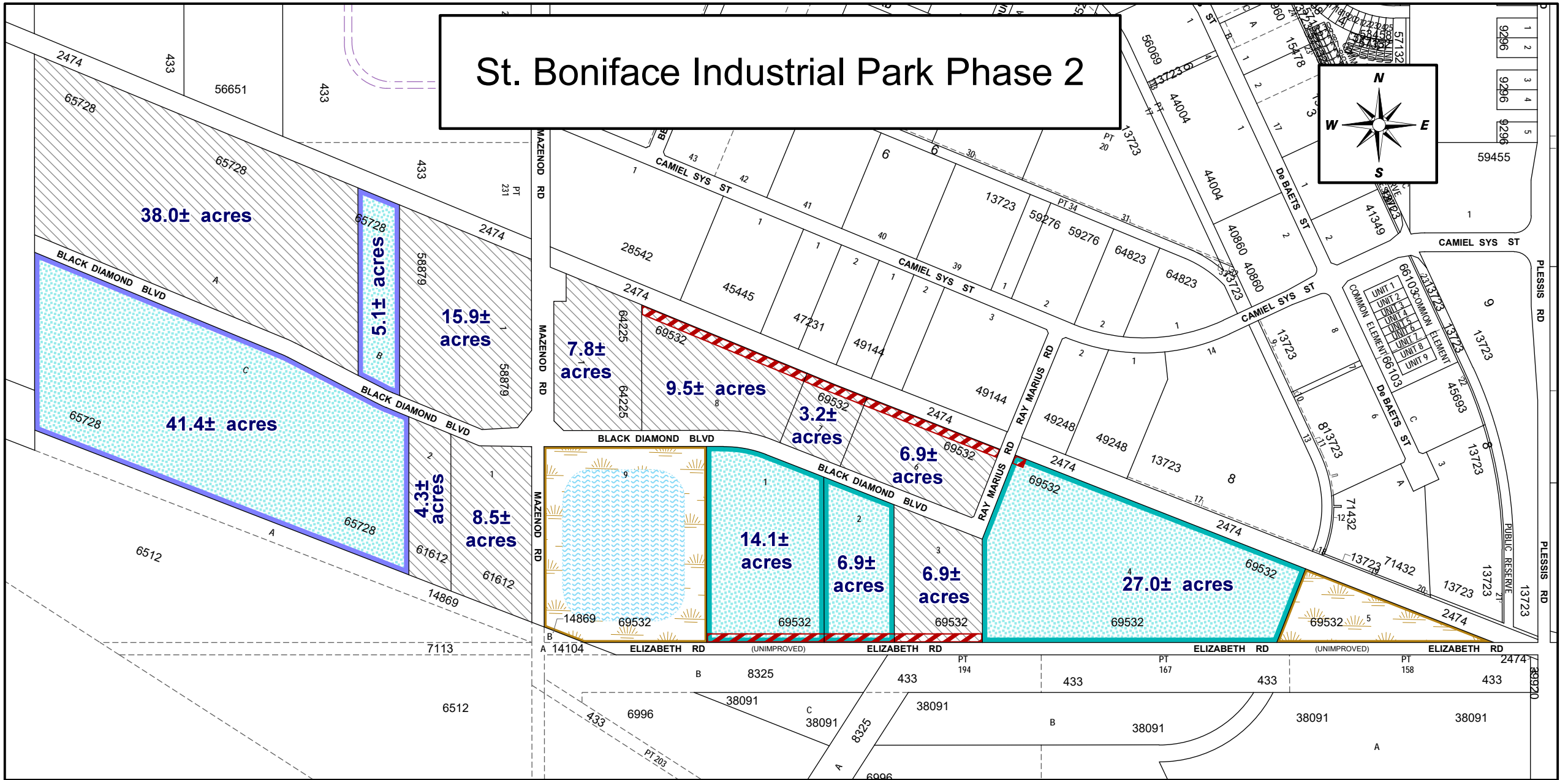
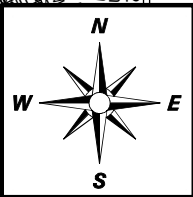







Site sizes are not indicated. Sites can be sized to suit your needs. Available lands are shown as of July 28, 2023.

St. Boniface Industrial Park Phase 2



-  Lands Sold
-  Serviced Property Available for Sale
-  Serviced Property Coming Soon to Market
-  Land Drainage Easement Area (15.0m wide)
-  Proposed Public Reserve

NOTE: Information displayed hereon has been compiled or computed from a variety of sources and should be used as a general guide only. No warranty is expressed or implied regarding the accuracy of such information.

District: EKT

Scale: 1:7500

Date: 2023-JULY-28

MISC. PLAN 14362 / 37