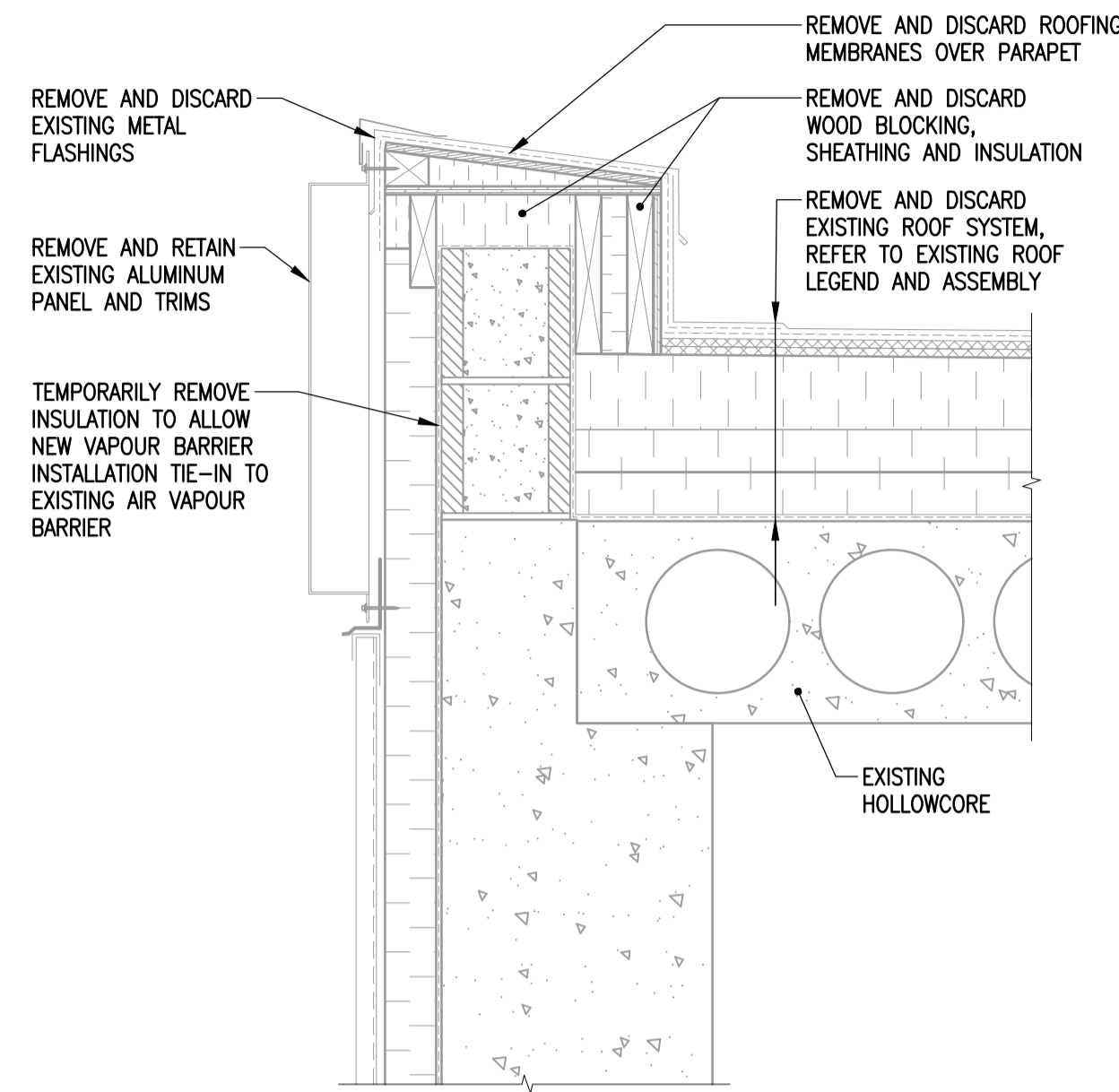
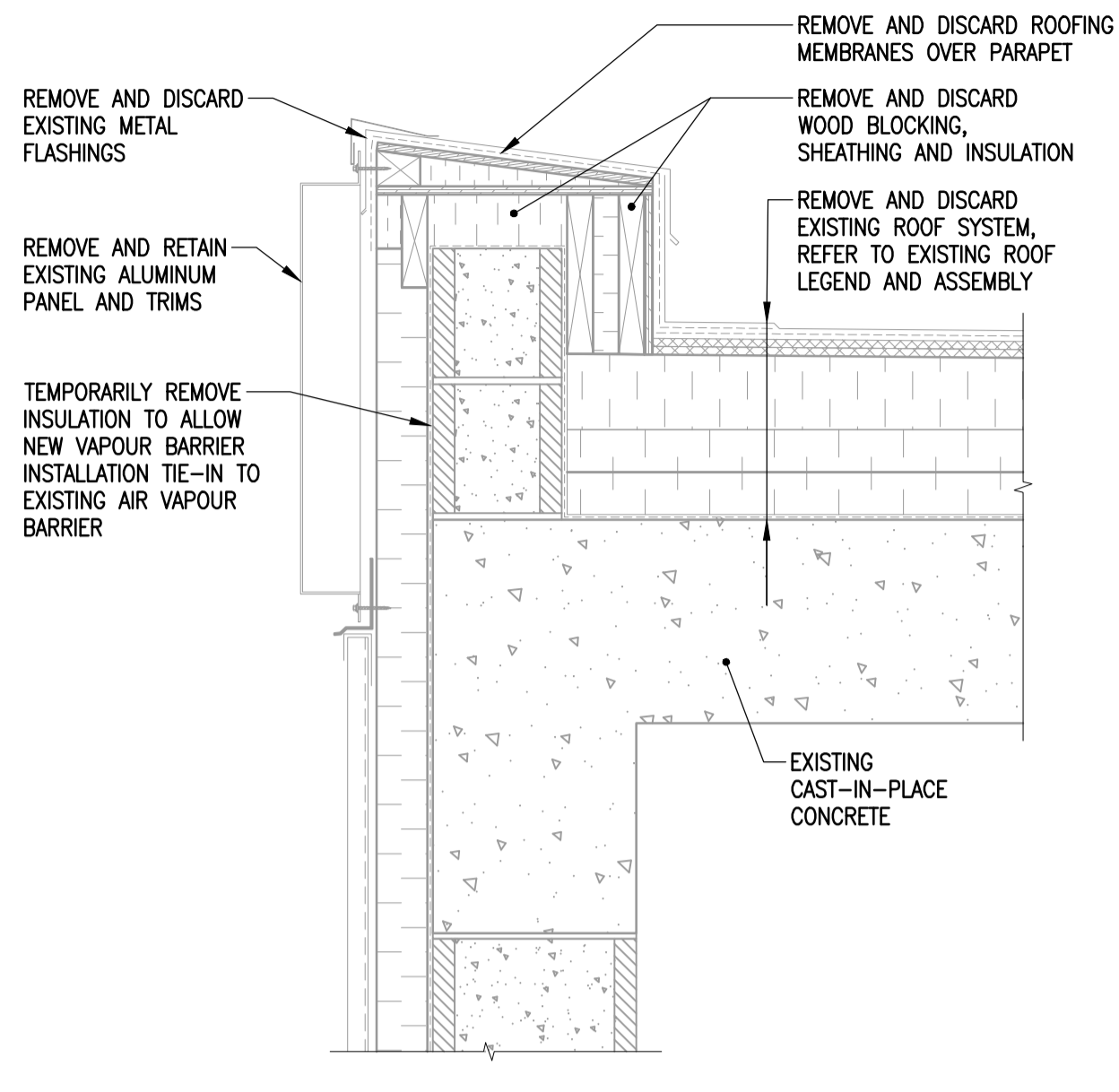


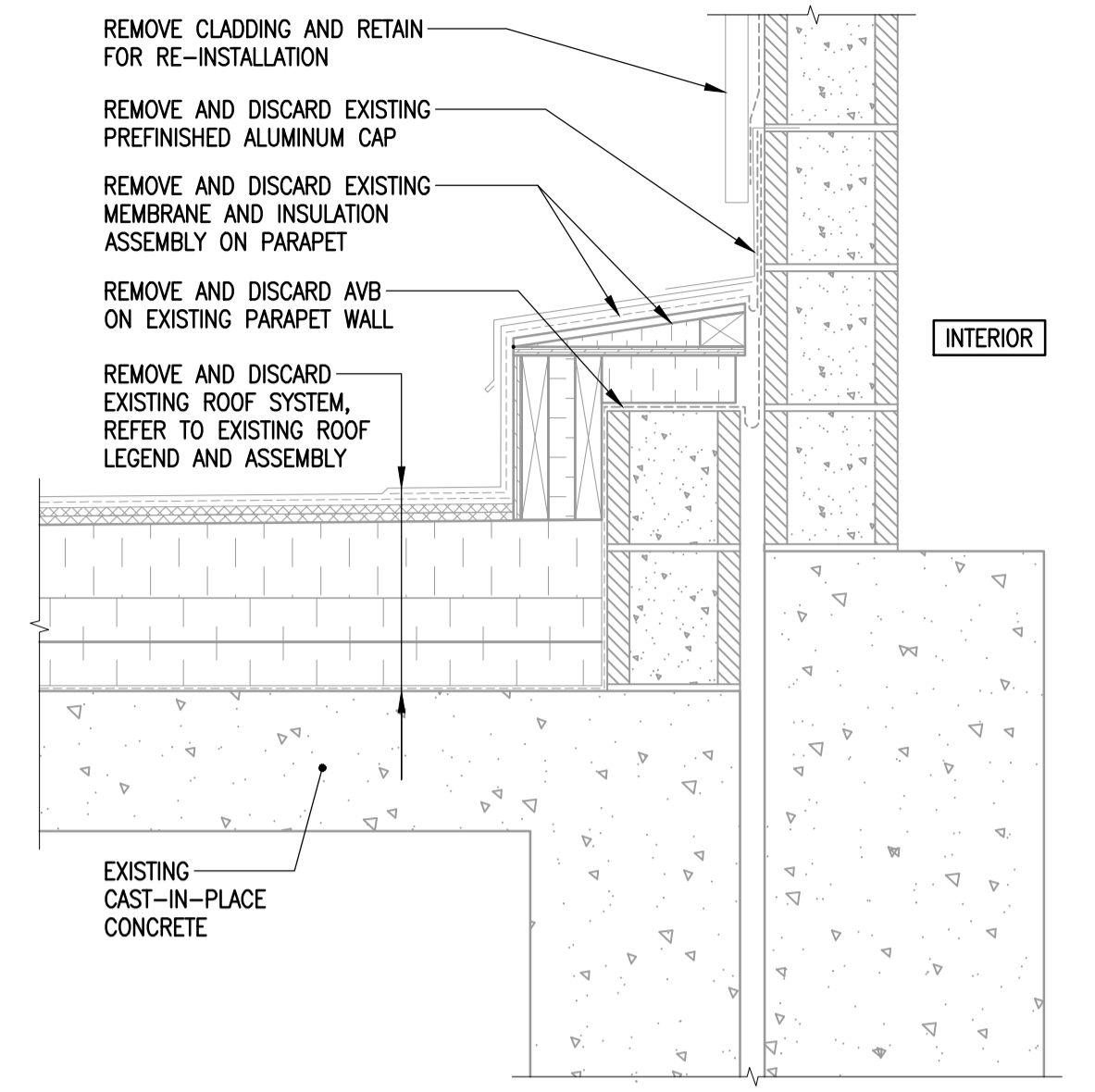
1 ROOF DETAIL AT CONCRETE TEE
1-0601B-80072-001 1:10



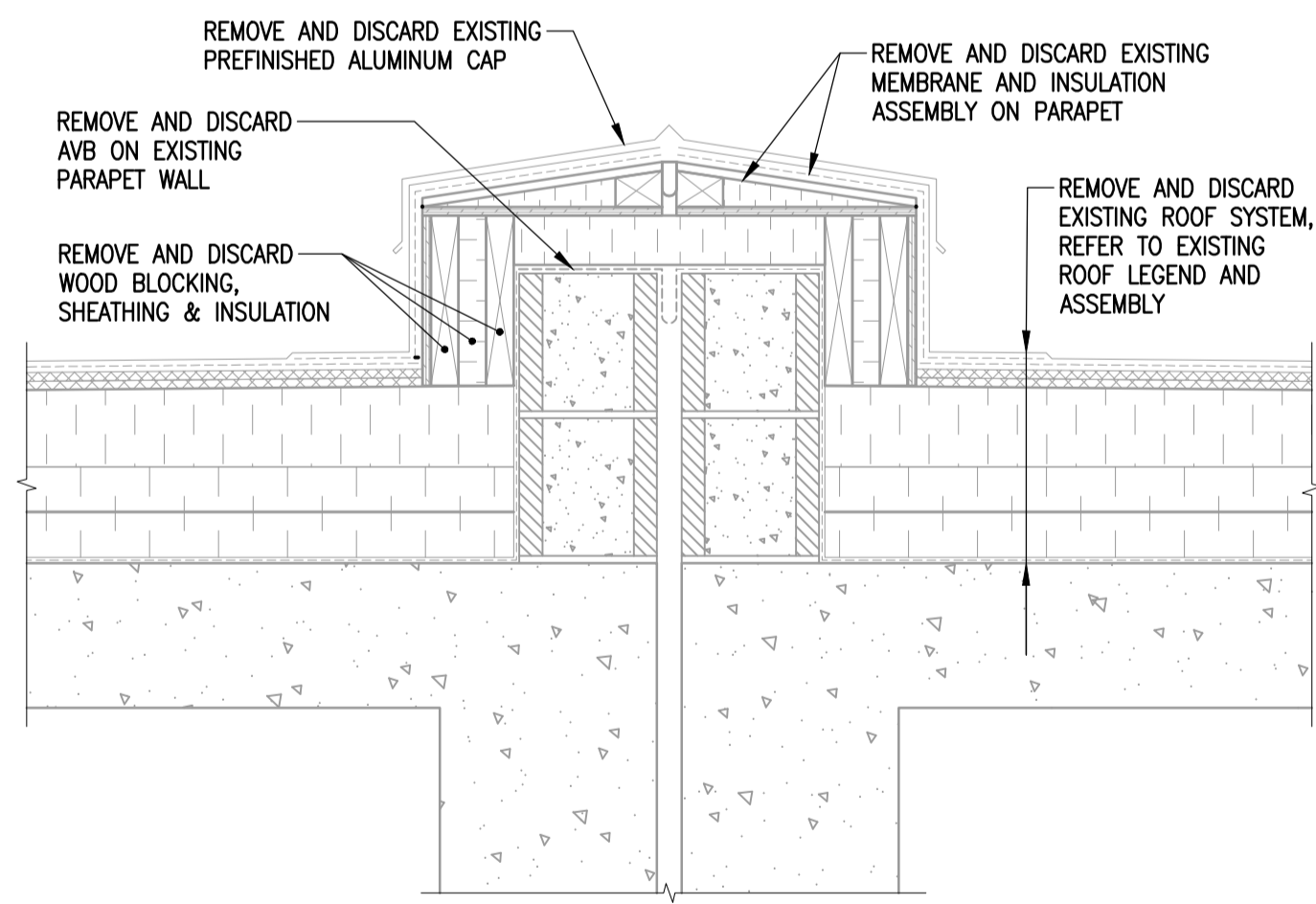
2 ROOF DETAIL AT HOLLOWCORE
1-0601B-80072-001 1:10



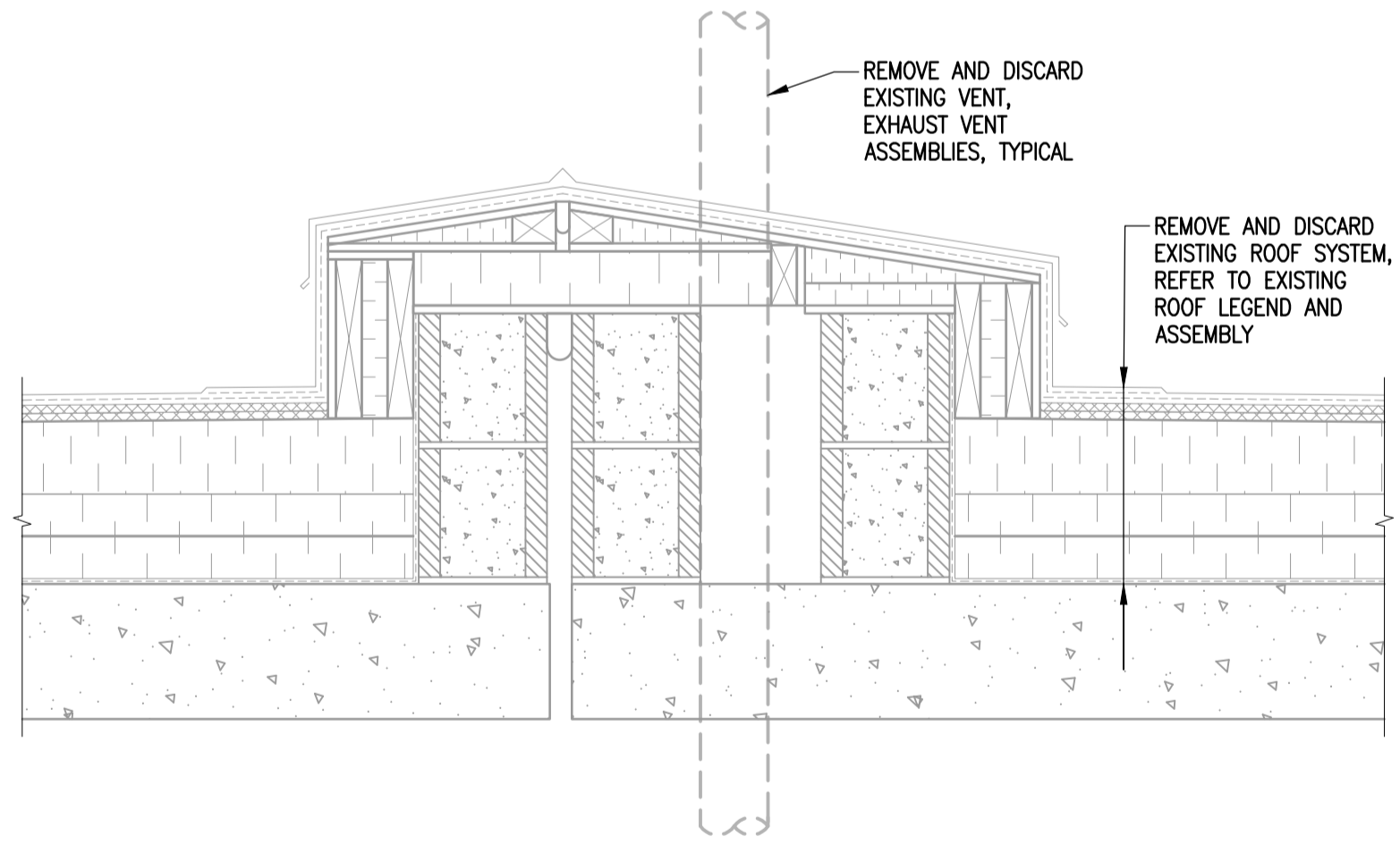
3 ROOF DETAIL AT CAST-IN-PLACE CONCRETE
1-0601B-80072-001 1:10



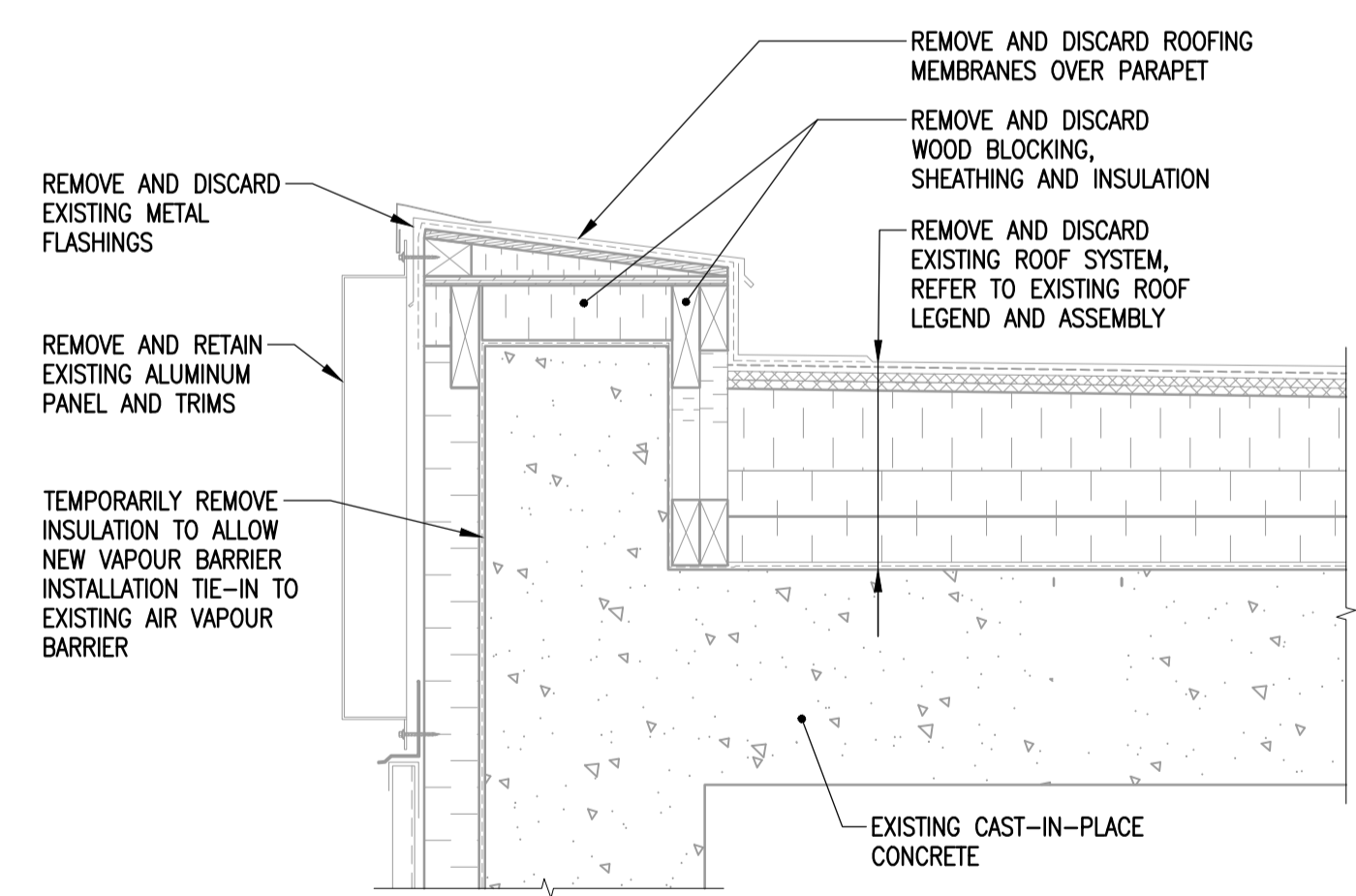
4 ROOF DETAIL AT HIGH WALL
1-0601B-80072-001 1:10



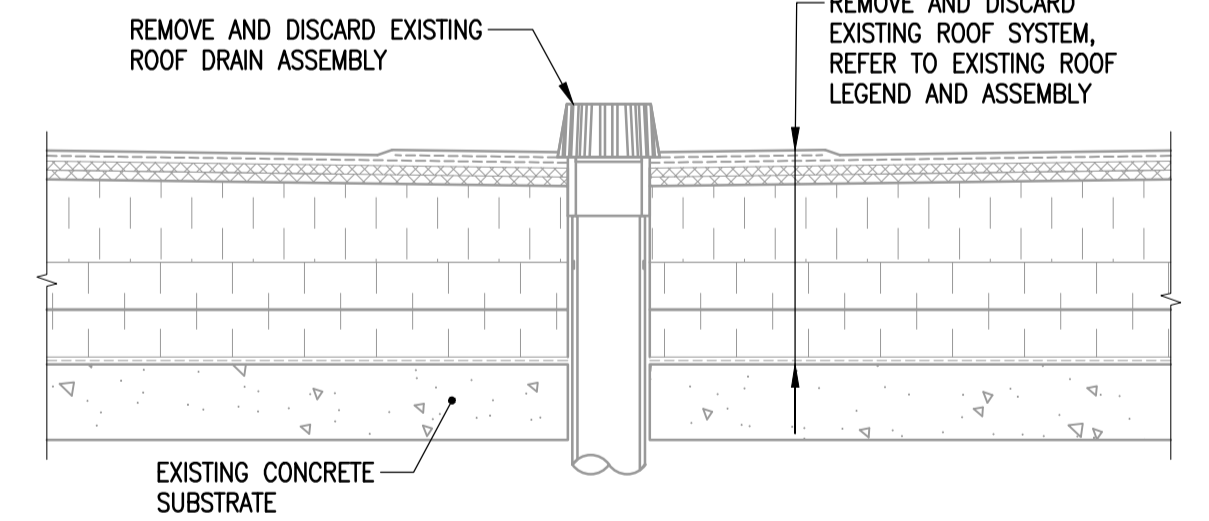
5 ROOF DETAIL AT EXPANSION JOINT
1-0601B-80072-001 1:10



6 LOWER ROOF PARAPET DETAIL
1-0601B-80072-001 1:10



7 SECTION DETAIL AT MECH PLENUM
1-0601B-80072-001 1:10



8 ROOF DRAIN DETAIL
1-0601B-80072-001 1:10

NO.	DRAWING NUMBER	REFERENCE DRAWING TITLE
10		
9		
8		
7		
6		
5	1-0601B-80067-001	BUILDING WM & W ROOF DEMOLITION PLAN
4	1-0601B-80066-001	BUILDING WA ROOF DEMOLITION PLAN
3	1-0601B-80065-001	BUILDING WP ROOF DEMOLITION PLAN
2	1-0601B-80064-001	BUILDING WF, WR, WO & WC ROOF DEMOLITION PLAN
1	1-0601B-80004-001	BUILDING NOTES, SCHEDULE & LEGENDS
REFERENCE DRAWINGS		

**ENGINEERS
GEOLOGISTS
MANITOBA**
Certificate of Authorization
Crosier Kilgour & Partners Ltd.
No. 235

B.M. ELEV.		DESIGNED BY		CHECKED BY	
		GJH	JAW		
		LOL	GJH		
00	ISSUED FOR TENDER	23/03/21	GJH		
	NO. REVISIONS	DATE	BY	DATE	
		2023/03/21			

ENGINEER'S SEAL
PROVINCE OF MANITOBA
J.A. WELLS
23/03/21
REGISTERED PROFESSIONAL ENGINEER
CONSULTANT DRAWING NO. S3.1

THE CITY OF WINNIPEG
WATER AND WASTE DEPARTMENT
ENGINEERING DIVISION

DRINKING WATER TREATMENT PLANT
MAIN BUILDING
ROOF REPLACEMENT

CITY FILE NUMBER **W-1049**
SHEET 1 OF 1
CITY DRAWING NUMBER 1-0601B-80072-001

BUILDING
ROOF DEMOLITION
DETAILS 1 OF 4