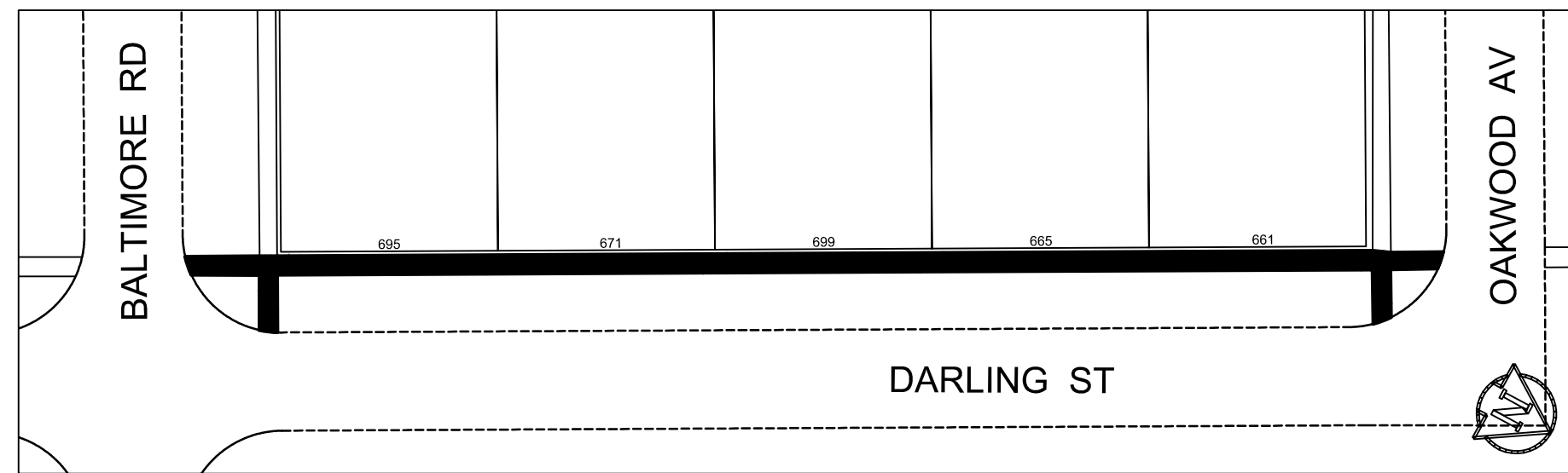
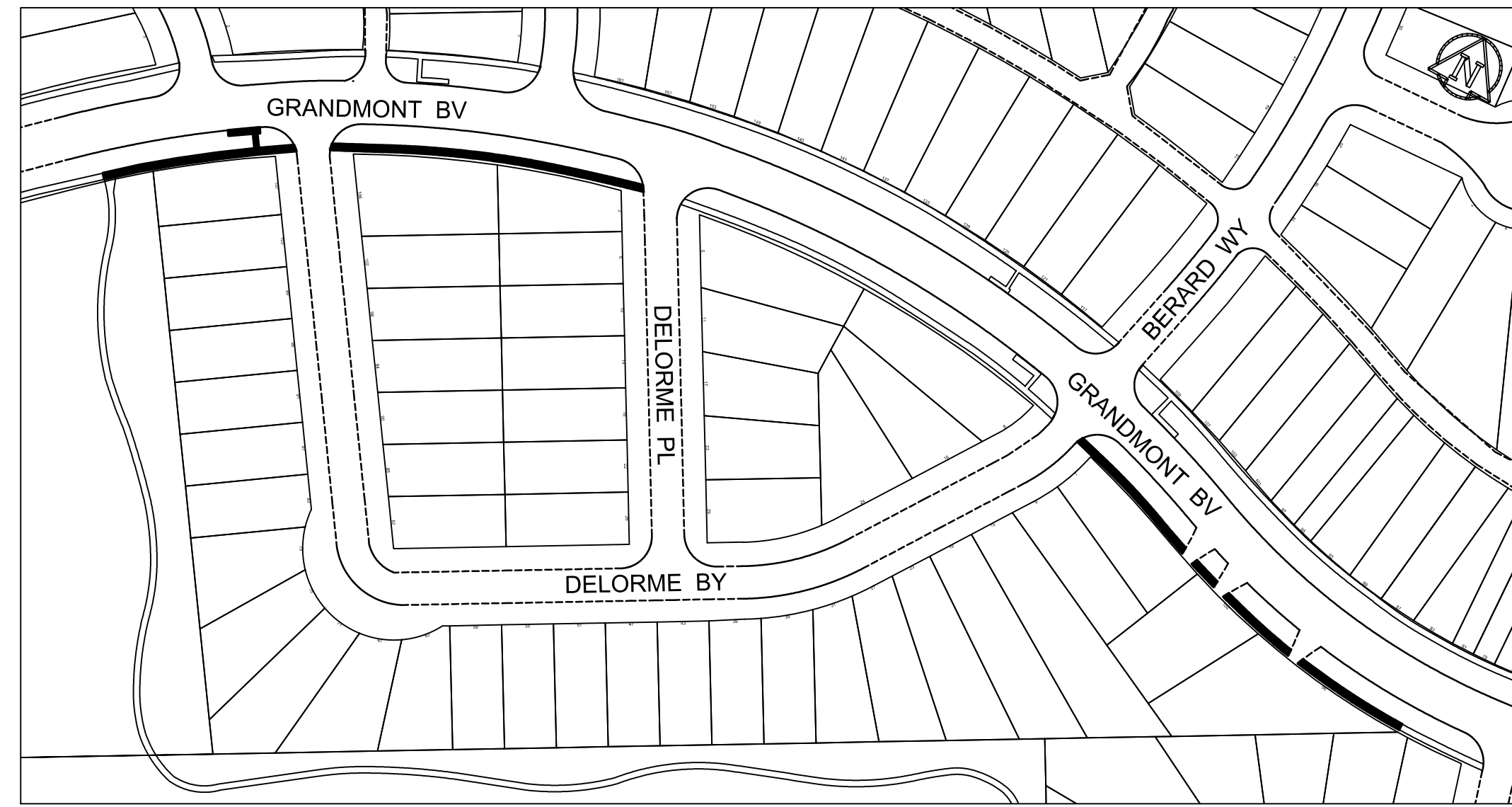


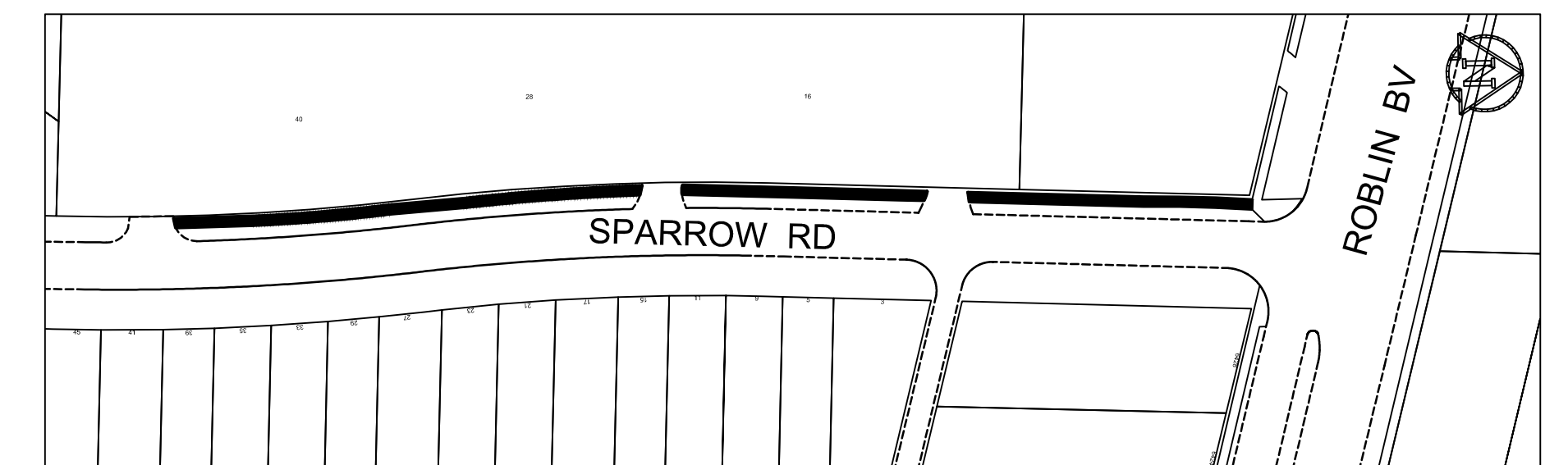
ECCLES STREET FROM ARNOLD AVENUE TO MORLEY AVENUE
SCALE = 1:500



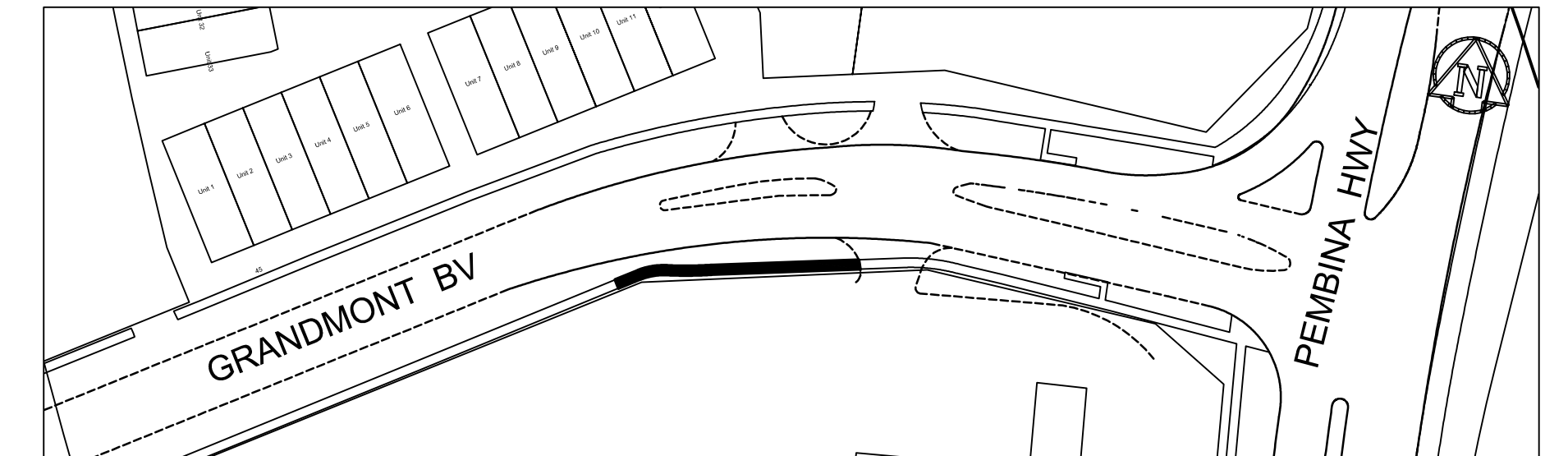
DARLING STREET FROM OAKWOOD AVENUE TO BALTIMORE ROAD
SCALE = 1:500



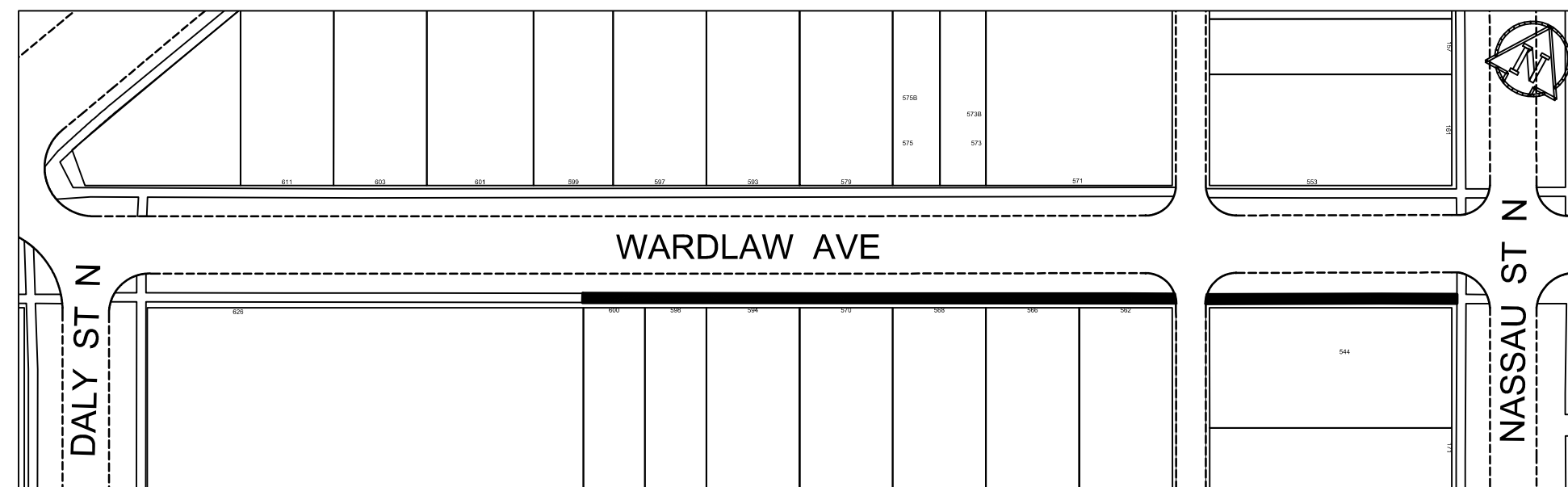
GRANDMONT BLVD FROM GRAVEL PATH TO EAST PL OF #96 GRANDMONT
SCALE = 1:1250



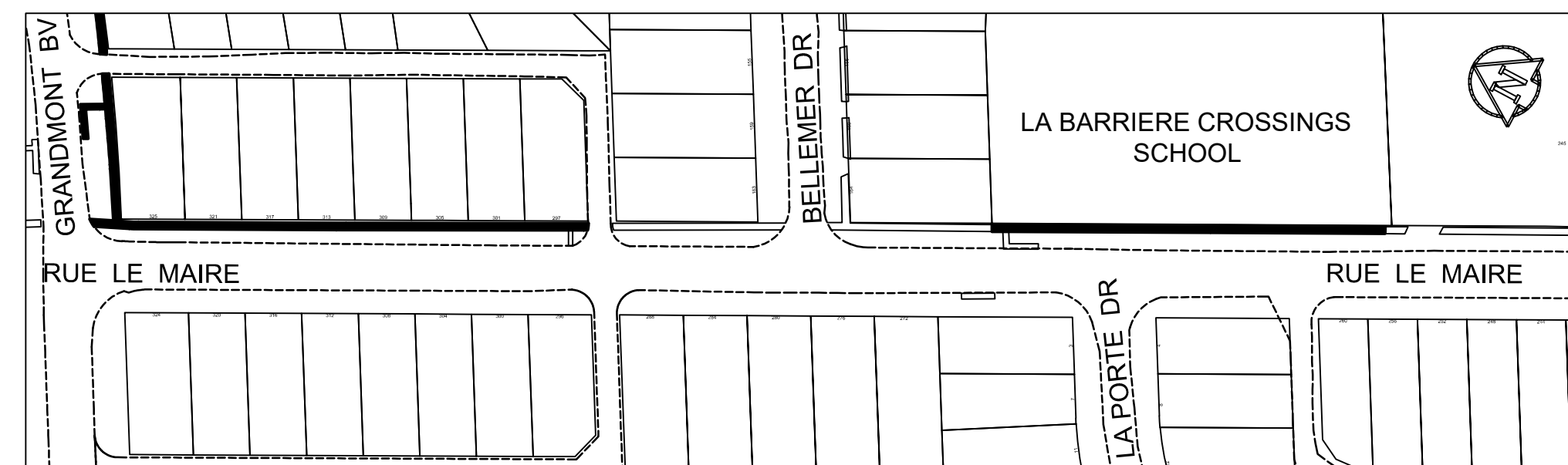
SPARROW ROAD FROM ROBLIN BLVD TO END
SCALE = 1:1000



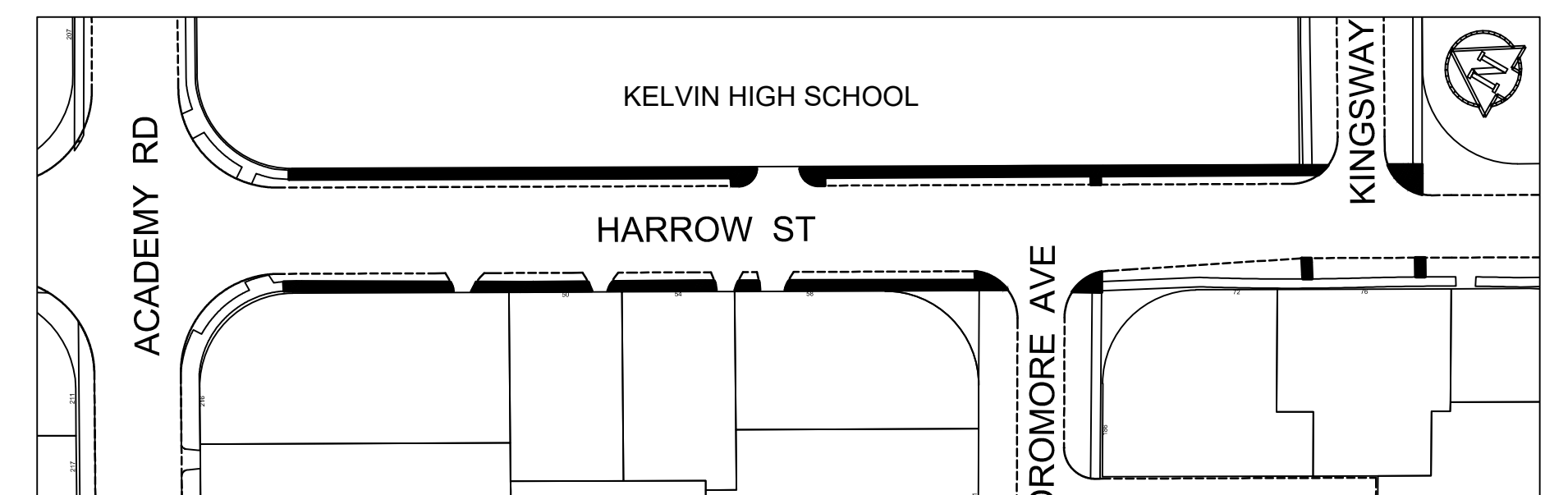
GRANDMONT BLVD FROM COOP ENTRANCE TO 40M WEST
SCALE = 1:1000



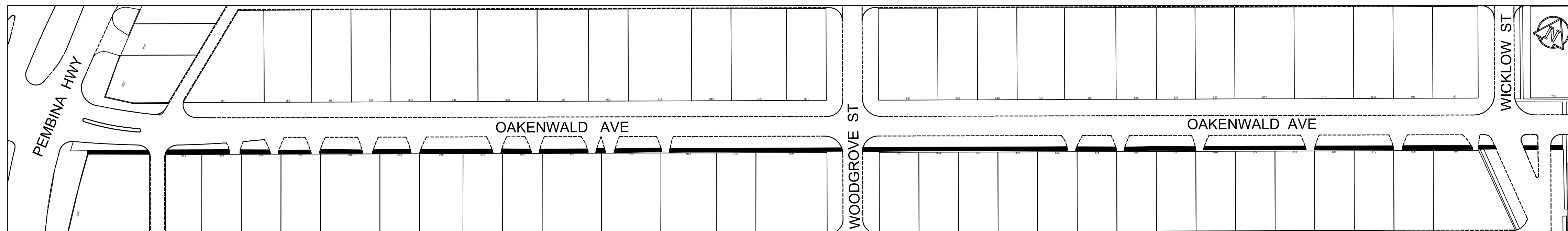
WARDLAW AVENUE FROM DALY STREET TO NASSAU STREET
SCALE = 1:1000



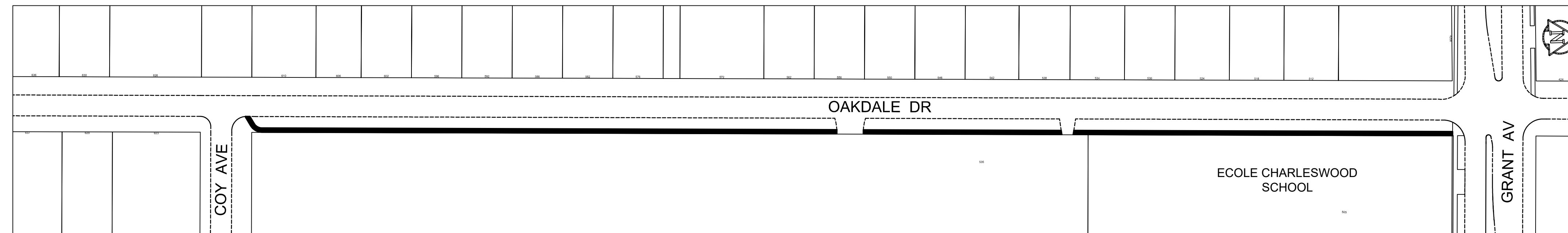
RUE LA MARIE FROM GRANDMONT TO HYDRANT
SCALE = 1:1250



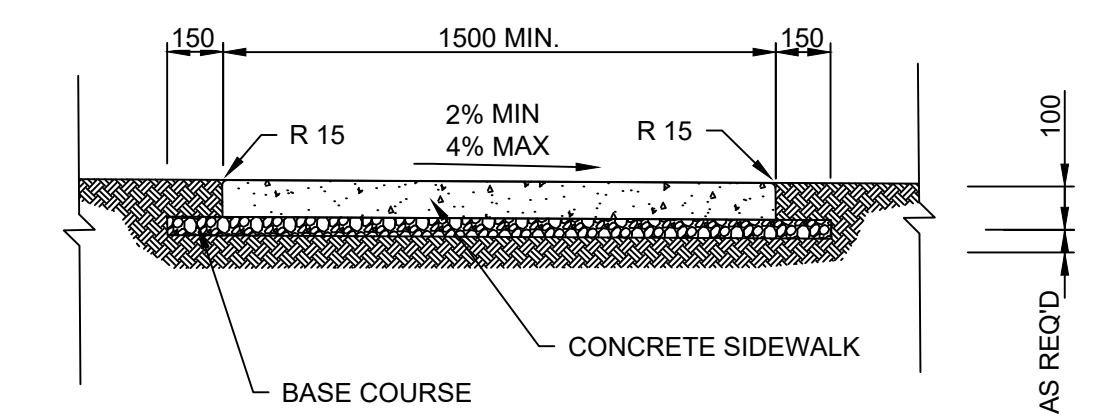
HARROW STREET FROM ACADEMY ROAD TO KINGSWAY
SCALE = 1:1000



OAKENWALD AVENUE FROM PEMBINA HWY TO WICKLOW STREET
SCALE = 1:1000



OAKDALE DRIVE FROM GRANT AVENUE TO COY AVENUE
SCALE = 1:1000



TYPICAL CONCRETE SIDEWALK CROSS SECTION
N.T.S.

SIDEWALK RENEWAL: [REDACTED]

GENERAL NOTES

- A. PAVEMENT DIMENSIONS ARE TO BACK OF CURB
- B. ALL CURB RADI UNDER 15.0m SHALL BE MODIFIED
- C. CONTRACTOR TO CONFIRM THE LOCATION OF ALL UTILITIES/SERVICES IN THE FIELD PRIOR TO CONSTRUCTION
- D. USE EXTREME CAUTION WHEN WORKING ABOVE UTILITY VAULTS
- E. CONTRACTOR TO TAKE PRECAUTIONARY STEPS TO PROTECT EXISTING TREES WITHIN THE CONSTRUCTION LIMITS AS PER CW 1140
- F. CURB REPLACEMENT AS DIRECTED BY CONTRACT ADMINISTRATOR
- G. GARBAGE/RECYCLING BINS TO BE REMOVED AND REPLACED BY OTHERS
- H. ADJUST CURB STOPS AND WATER VALVES TO GRADE
- I. SIDEWALK REPAIRS SHOWN ARE ONLY A REPRESENTATIVE SAMPLE OF THE TENDER QUANTITIES. RENEW SIDEWALK AS DIRECTED BY CONTRACT ADMINISTRATOR.
- J. DETECTABLE WARNING TILES WILL BE INSTALLED AS DIRECTED BY THE CONTRACT ADMINISTRATOR

ISSUED FOR TENDER
NOT TO BE USED FOR CONSTRUCTION

METRIC
WHOLE NUMBERS INDICATE MILLIMETERS
DECIMALIZED NUMBERS INDICATE METERS

TENDER NO. 11-2023

EXISTING	LEGEND - PLAN	PROPOSED	EXISTING	LEGEND - PLAN	PROPOSED	EXISTING	LEGEND - PROFILE	PROPOSED
⊕	HYDRANT	⊕	---	LDS/WWS	---	▬	CONCRETE	▬
⊗	VALVE	⊗	---	WATERMAIN	---	▬	CONCRETE SIDEWALK	▬
⊙	CURB STOP	⊙	---	GAS	---	▬	ASPHALT	▬
⊚	MANHOLE	⊚	---	TRAFFIC SIGNALS	---	▬	PAVING BAND	▬
⊛	CATCH BASIN	⊛	---	HYDRO/STREET LIGHT	---	▬	BRICK	▬
△	CURB INLET	△	---	MTS/SHAW	---	▬	AREAWAY	▬
⊖	HYDRO POLE	⊖	---	CURB RENEWAL	---	▬	BOLLARD	▬
⊕	LIGHT STANDARD	⊕	---	PROPERTY LINE	---	▬	FENCE	▬
⊕	TRAFFIC SIGNAL POLE	⊕	---	RAMP CURB	---	▬	UTILITY MAN HOLE	▬
⊕	SURVEY BAR	⊕	---	ELEVATIONS	(31.000)	▬	TREE WELL	▬
⊕	GEODETIC BENCH MARK	⊕	---	TREE	---	▬		▬

LOCATION APPROVED
UNDERGROUND STRUCTURES

DATE

NOTE:
LOCATION OF UNDERGROUND STRUCTURES AS SHOWN ARE BASED ON THE BEST INFORMATION AVAILABLE. BUT NO GUARANTEE IS GIVEN THAT ALL EXISTING UTILITIES ARE SHOWN OR THAT THE GIVEN LOCATIONS ARE EXACT. CONFIRMATION OF EXISTENCE AND EXACT LOCATION OF ALL SERVICES MUST BE OBTAINED FROM THE INDIVIDUAL UTILITIES BEFORE PROCEEDING WITH CONSTRUCTION.

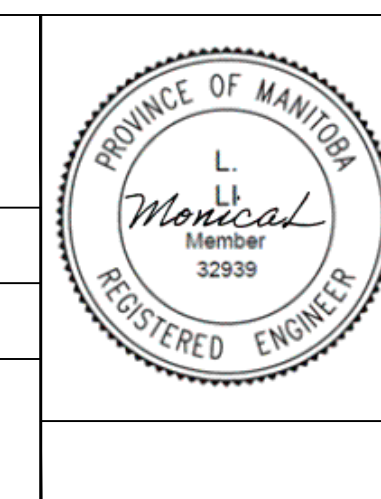
NO.	REVISIONS	DATE	BY
2.	ISSUED FOR TENDER	4/2/2023	T.K.
1.	SUBMIT FOR PLAN APPROVAL	2/23/2023	T.K.

ENGINEERING DIVISION
TECHNOLOGY SERVICES BRANCH
106 - 1155 PACIFIC AVE

DESIGNED BY: S.D. CHECKED BY: G.K.
DRAWN BY: S.D. APPROVED BY: M.L.

HOR. SCALE: Varies
VERTICAL: Varies

DATE: 2023/03/28



THE CITY OF WINNIPEG
PUBLIC WORKS DEPARTMENT

LOCAL SIDEWALK RENEWALS
VARIOUS LOCATIONS

CITY DRAWING NUMBER: SE-23-64
SHEET 6 OF 8

1