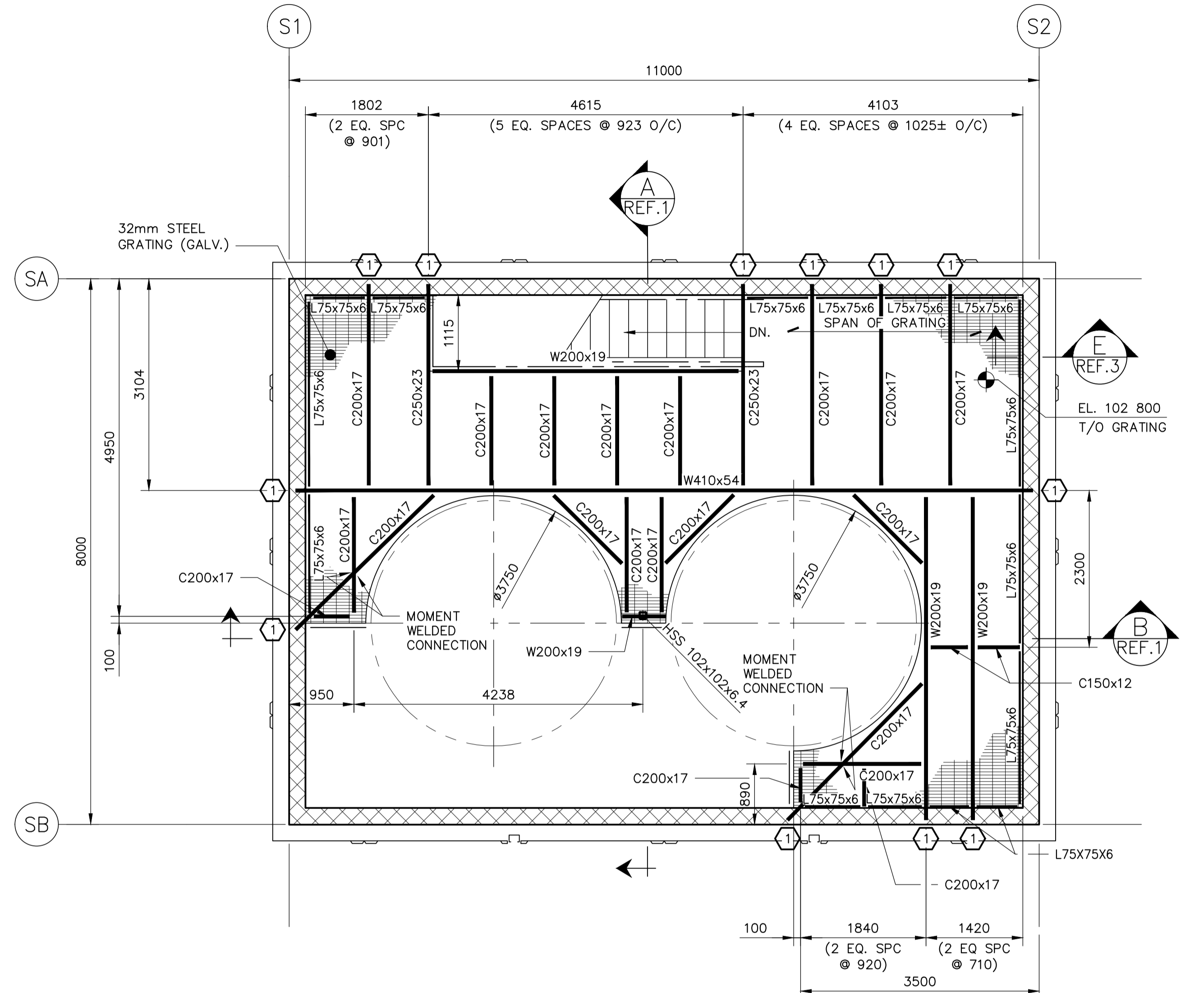


**MAIN FLOOR FRAMING PLAN**  
SCALE:1:50



**PLATFORM FRAMING PLAN**  
SCALE:1:50 T/O GRATING EL. 102 800 U.N.O.

**LEGEND:**  
① BEAM POCKETED INTO MASONRY WALL. SEE SECTION K/REF.3

**NOTE:**  
STEEL ABOVE PIT AT EL. 100 000 TO BE PAINTED WITH CORROSION-RESISTANT COATING. SEE SPECIFICATIONS.

CONCRETE SLAB SCHEDULE			
MARK	DEPTH	REINFORCING	REMARKS
SL-1	150	10M @ 200 O/C E.W.	

10			
9			
8			
7			
6			
5			
4			
3	1-0101-SOTL-F201-001	SECTIONS & DETAILS	
2	1-0101-SSST-F202-001	SECTIONS & DETAILS	
1	1-0101-SGAD-F205-001	SECTIONS	
NO.	DRAWING NUMBER	REFERENCE DRAWING TITLE	
REFERENCE DRAWINGS			



B.M. ELEV.			
CONSTRUCTION COMPLETION DATE: YYYY MM DD			
DESIGNED BY	J. WALTER		
CHECKED BY	CMS		
DRAWN BY	F. VALENCIA		
APPROVED BY	JMW		
SCALE:	AS SHOWN		
1	RE-ISSUED FOR CONSTRUCTION 2022 06 17		
0	ISSUED FOR CONSTRUCTION 2022 05 18		
NO.	REVISIONS	DATE	BY
		2022 02 24	
PLOT DATE:		2022 06 17	

**KGS GROUP**

ENGINEER'S SEAL

CONSULTANT DRAWING NUMBER: 21-0107-015\_S2.2002

21-0107-015_S2.2002
CITY DRAWING NUMBER
1-0101-SSST-F202-001
SHEET 1 OF 1

**THE CITY OF WINNIPEG**  
WATER AND WASTE DEPARTMENT  
ENGINEERING DIVISION

**Winnipeg**

NORTH END SEWAGE TREATMENT PLANT (NEWPPC)  
INTERIM PHOSPHOROUS REMOVAL  
AREA F - CHEMICAL RECEIVING AND STORAGE FACILITY  
MAIN FLOOR & PLATFORM FRAMING PLAN  
BUILDING 102

BID OPPORTUNITY: 197-2022  
CONTRACT NUMBER: 1-0101-SSST-F202-001.dwg