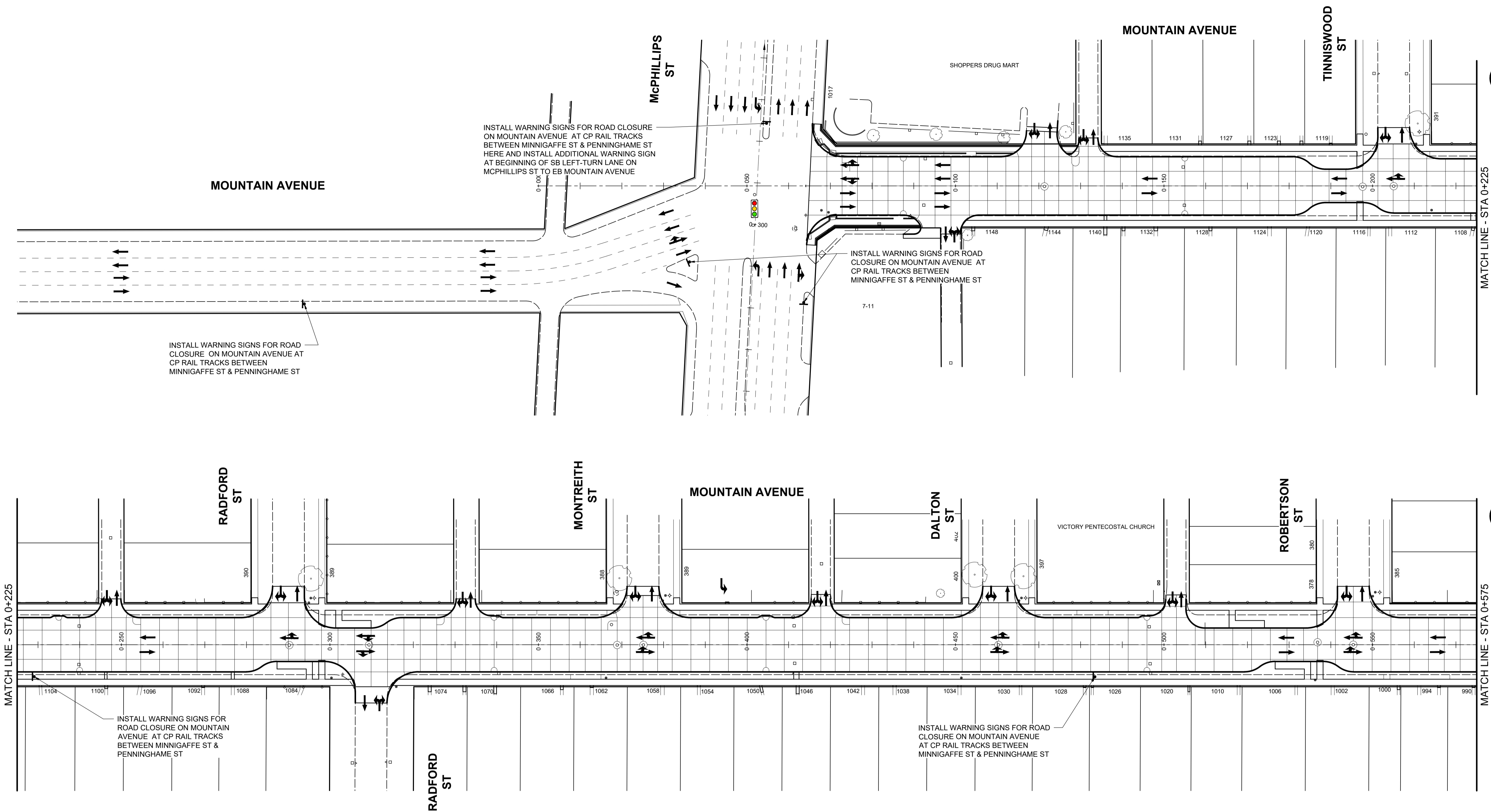


X:\Proj\2021\12\0258300-2021-2023\McGraw-Hill\Mountain Renewal\09_CAD\07_Sheet\Mountain\STAG\NGC102583-Mountain-Stage and Traffic Signs.dwg Last Saved: 3/24/2022 5:30 PM by: diane Printed: 3/25/2022 12:28 PM by: Dave Lane A1 SIZE 841mm x 641mm



INSTALL WARNING SIGNS FOR ROAD CLOSURE ON MOUNTAIN AVENUE AT CP RAIL TRACKS BETWEEN MINNIGAFFE ST & PENNINGHAME ST HERE AND INSTALL ADDITIONAL WARNING SIGN AT BEGINNING OF SB LEFT-TURN LANE ON MCPHILLIPS ST TO EB MOUNTAIN AVENUE

INSTALL WARNING SIGNS FOR ROAD CLOSURE ON MOUNTAIN AVENUE AT CP RAIL TRACKS BETWEEN MINNIGAFFE ST & PENNINGHAME ST

INSTALL WARNING SIGNS FOR ROAD CLOSURE ON MOUNTAIN AVENUE AT CP RAIL TRACKS BETWEEN MINNIGAFFE ST & PENNINGHAME ST

INSTALL WARNING SIGNS FOR ROAD CLOSURE ON MOUNTAIN AVENUE AT CP RAIL TRACKS BETWEEN MINNIGAFFE ST & PENNINGHAME ST

INSTALL WARNING SIGNS FOR ROAD CLOSURE ON MOUNTAIN AVENUE AT CP RAIL TRACKS BETWEEN MINNIGAFFE ST & PENNINGHAME ST

ISSUED FOR TENDER - R1

CITY OF WINNIPEG
MOUNTAIN AVENUE RECONSTRUCTION
McPHILLIPS ST TO ARLINGTON ST
TRAFFIC SIGNAGE
MOUNTAIN AVENUE
STAGE - FULL CLOSURE AT CP RAIL
FIGURE ST-24

