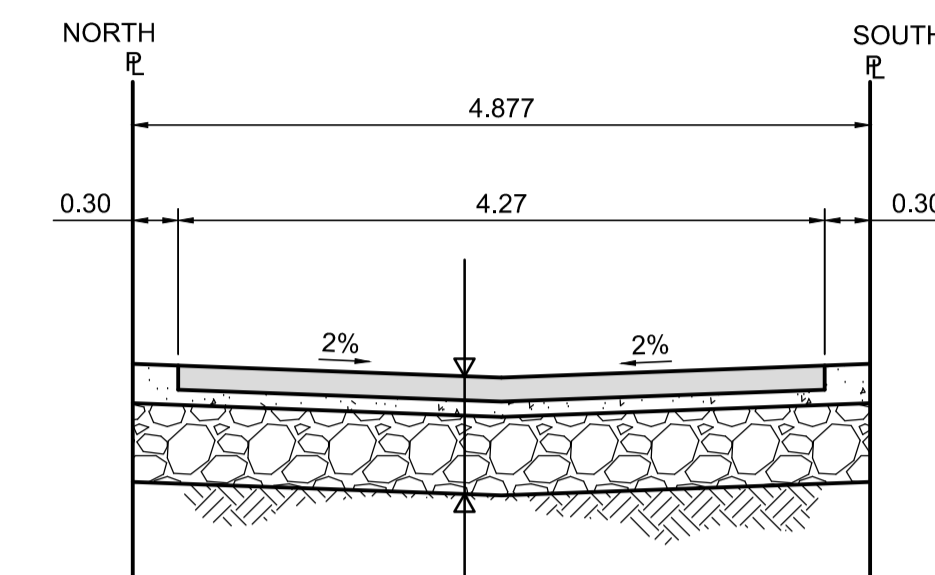


PROFILE - ALLEY PAVEMENT

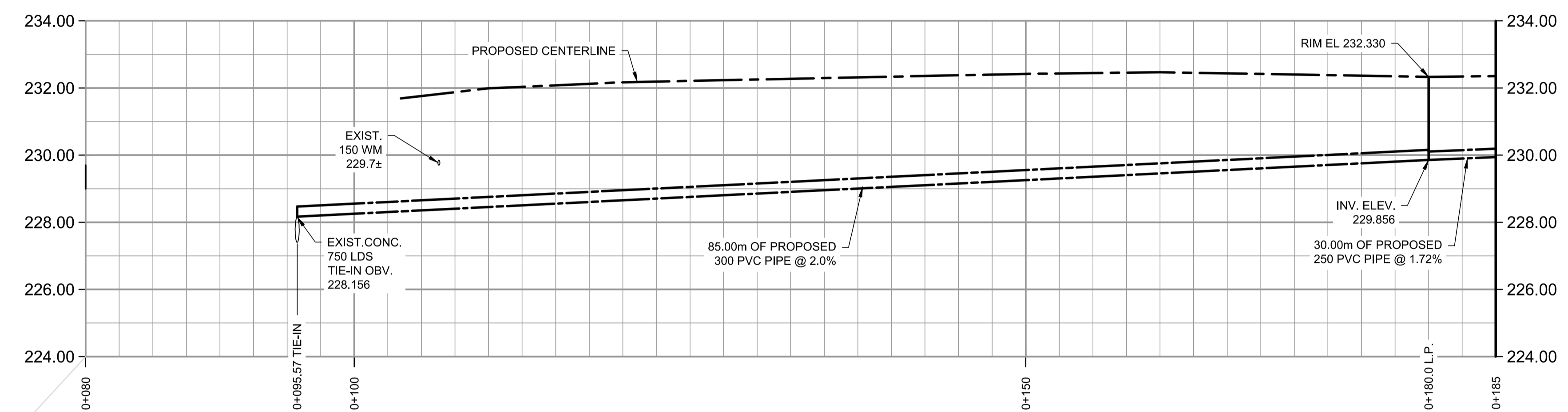
Scale H=1:250 V=1:10



SECTION - TYPICAL

Scale NTS

50mm ASPHALT (TYPE IA)
75mm ASPHALT (TYPE III)
100mm BASE COURSE (GRANULAR B)
200mm - 50mm SUBBASE (GRANULAR B)
GEOGRID (CLASS A)
SEPARATION/FILTRATION FABRIC ON PREPARED SUBGRADE

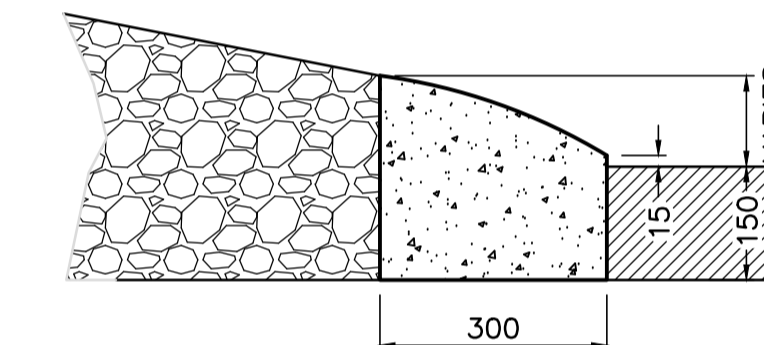


PROFILE - ALLEY DRAINAGE

Scale H=1:250 V=1:100

DETAIL - LIP CURB (MONOLITHIC)

Scale NTS

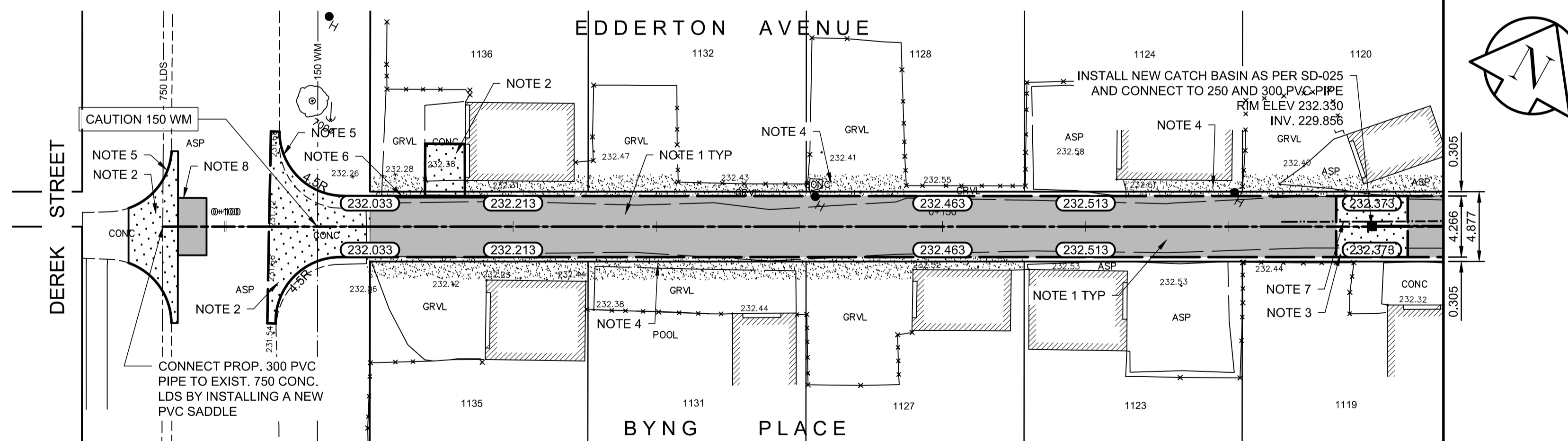


REFERENCE NOTES:

- A. PAVEMENT DIMENSIONS ARE TO BACK OF CURB
- B. BASELINE IS CENTRE LINE OF 4.877m WIDE RIGHT OF WAY
- C. PROPERTY LINES OBTAINED FROM CITY OF WINNIPEG L.B.I.S., AND NO SCALE FACTOR WAS APPLIED
- D. REFER TO AECOM FIELD BOOK NO. 5098

CONSTRUCTION NOTES:

1. CONSTRUCT NEW ASPHALT PAVEMENT AS PER TYPICAL SECTION
2. REMOVE EXISTING CONCRETE PAVEMENT AND CONSTRUCT NEW 150mm REINFORCED CONCRETE PAVEMENT
3. CONSTRUCT NEW 150mm REINFORCED CONCRETE PAVEMENT
4. REGRADE EXISTING GRAVEL SURFACE WITH BASE COURSE
5. CONSTRUCT NEW MODIFIED BARRIER CURB (180mm HT. INTEGRAL)
6. CONSTRUCT NEW LIP CURB (MONOLITHIC) AS PER DETAIL
7. INSTALL 6.0m SUBDRAIN PIPE ON EITHER SIDE OF CATCH BASIN
8. PLACE ASPHALT PAVEMENT (TYPE IA, MATCH EXISTING ASPHALT THICKNESS)



PLAN - ALLEY

Scale 1:250

**ENGINEERS
GEO-SCIENTISTS
MANITOBA**
Certificate of Authorization
AECOM Canada Ltd.
No. 4671 Date:

PRELIMINARY
NOT FOR CONSTRUCTION

Date: 2021/07/20

METRIC

WHOLE NUMBERS INDICATE MILLIMETRES
DECIMALIZED NUMBERS INDICATE METRES

EXISTING	LEGEND - PLAN	PROPOSED	EXISTING	LEGEND - PLAN	PROPOSED	EXISTING	LEGEND - PROFILE	PROPOSED
150 mm W.M.	WATERMAIN	150 mm W.M.	HYDRO	M.T.S.	---	X	PROFILE	---
◇	HYDRANT	◆	CONCRETE	CONCRETE	---	□	NORTH/WEST GUTTER	---
⊙	VALVE	⊙	ASPHALT	ASPHALT	---	○	SOUTH/EAST GUTTER	---
300mm L.D.S.	LAND DRAINAGE SEWER	300mm L.D.S.	GRAVEL	GRAVEL	---	◇	N/W PROPERTY LINE	---
250mm W.W.S.	WASTEWATER SEWER	250mm W.W.S.	SURVEY BAR	SURVEY BAR	---	○	S/E PROPERTY LINE	---
○	MANHOLE	●	ELEVATION	ELEVATION	000.000			
□	CATCH BASIN	■	TREE	TREE	300			
▽	CATCH PIT	▼	SIDWALK RAMP	SIDWALK RAMP	---			
---	PROPERTYLINE	---	CONCRETE SIDEWALK	CONCRETE SIDEWALK	---			
---	CULVERT	---	FENCE	FENCE	---			
---	GAS	---						

LOCATION APPROVED UNDERGROUND STRUCTURES

SUPV. U/G STRUCTURES COMMITTEE DATE

NOTE:
LOCATION OF UNDERGROUND STRUCTURES AS SHOWN ARE BASED ON THE BEST INFORMATION AVAILABLE, BUT NO GUARANTEE IS GIVEN THAT ALL EXISTING UTILITIES ARE SHOWN OR THAT THE GIVEN LOCATIONS ARE EXACT. CONFIRMATION OF EXISTENCE AND EXACT LOCATION OF ALL SERVICES MUST BE OBTAINED FROM THE INDIVIDUAL UTILITIES BEFORE PROCEEDING WITH CONSTRUCTION.

B.M. ELEV. 88R519 - W. SIDE CHANGING CROSS CRES. S. OF S. LEG OF STRAND CIRCLE. TBLT. ON TOP OF 0.05m sq. x 2.4m IRON TUBE. 7.5m E. OF E. WALL & 15.8m S. OF S. WALL NO. 119 STRAND CIRCLE. OR 35.38m S. OF S.L. STRAND CIRCLE & 5.9m E. OF W.L. CHANGING CROSS CRES. ELEVATION: 232.430

NO.	REVISIONS	DATE	BY
0	ISSUED FOR TENDER	07/20/2021	RC
A	ISSUED FOR REVIEW	07/08/2021	BC

AECOM

DESIGNED BY: **BC** CHECKED BY: **RC**
DRAWN BY: **RAM/PAAP** APPROVED BY: **RC**
HOR. SCALE: **1:250** ORIGINAL SIGNED BY:
VERTICAL: **AS SHOWN**

DATE: **2021/06/16** DATE:

ENGINEER'S SEAL
PROVINCE OF MANITOBA
R. T. CUNNINGHAM
Member 24711
REGISTERED PROFESSIONAL ENGINEER

CONSULTANT DRAWING NO. **CT-03**

THE CITY OF WINNIPEG
PUBLIC WORKS DEPARTMENT
ENGINEERING DIVISION

2021 LOCAL IMPROVEMENT ALLEYS

BYNG PL. / EDDERTON AVE. ALLEY - DEREK ST. TO ROCKMAN ST.
LOCAL IMPROVEMENT
STA. 0+100 TO STA. 0+185

CITY DRAWING NUMBER
SHEET **03** OF **04**