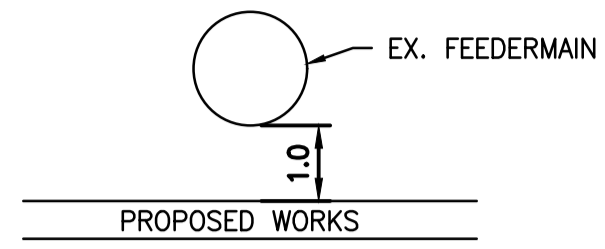
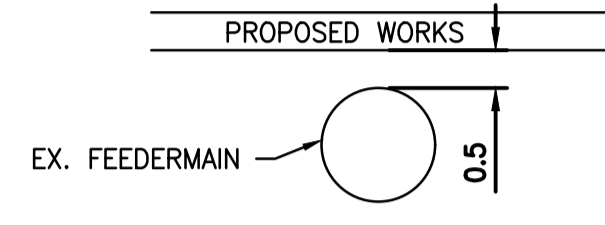


- CAUTION: FEEDERMAIN
- CONTACT THE DEPARTMENT'S CONSTRUCTION SERVICE COORDINATOR AT 204-986-4289 7 DAYS PRIOR TO THE COMMENCEMENT OF CONSTRUCTION TO ARRANGE FOR AN INSPECTION.
  - PRIOR TO ANY CONSTRUCTION THE FEEDERMAIN MUST BE EXPOSED BY A SOFT DIG METHOD SO AS TO CONFIRM DEPTH AND LOCATION.
  - A MINIMUM CLEARANCE OF 1.0 METER MUST BE PROVIDED BETWEEN THE UNDERSIDE OF THE FEEDERMAIN AND THE TOP OF THE PROPOSED WORKS. THIS INSTALLATION BY TRENCHLESS METHOD ONLY.



- A MINIMUM CLEARANCE OF 0.5 METERS MUST BE PROVIDED BETWEEN THE UNDERSIDE OF THE PROPOSED WORKS AND THE TOP OF THE EXISTING FEEDERMAIN. BY TRENCHLESS OR OPEN TRENCH.



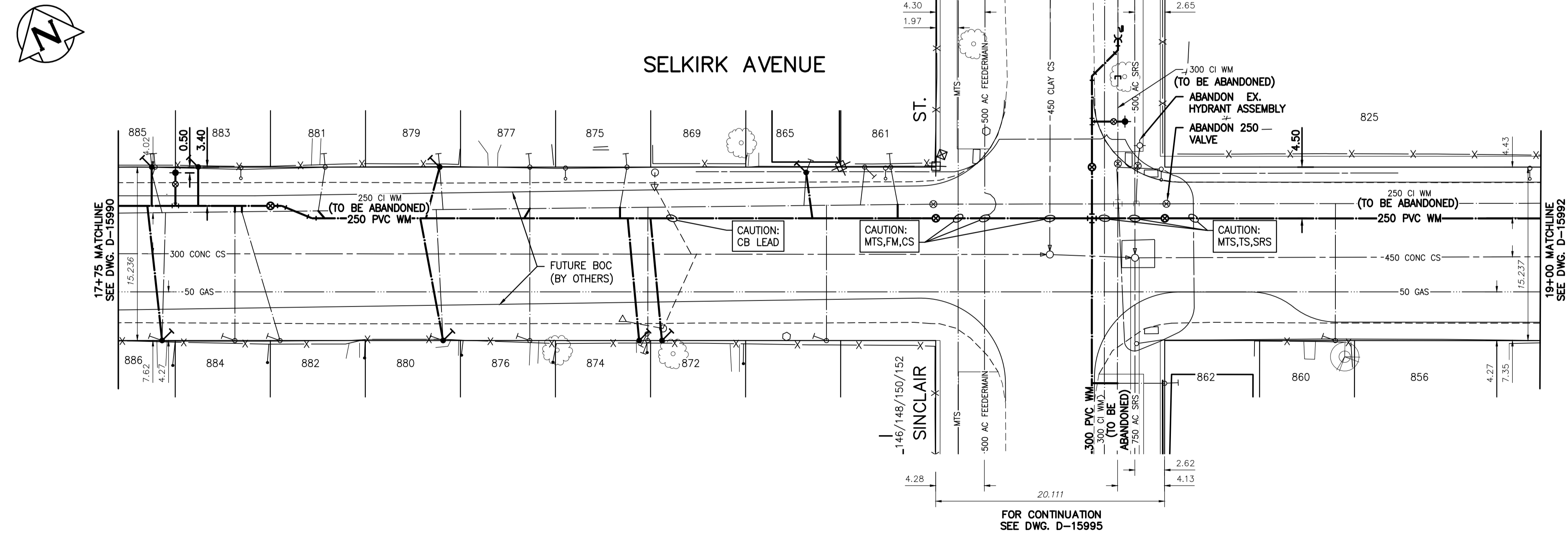
- A SHAFT MUST BE EXCAVATED BY SOFT DIG METHODS 4.0 METERS FROM THE CENTRELINE OF FEEDERMAIN TO CONFIRM THE ALIGNMENT AND THE ELEVATION OF THE DRILLING ROD BEFORE IT CROSSED OVER OR UNDER THE FEEDERMAIN. THIS CONFIRMATION MUST BE WITNESSED BY A CITY REPRESENTATIVE.

NOTE: CHAINAGES SHOWN ARE ALONG CENTRE LINE OF ROW

WATER SERVICE INFORMATION

ADDRESS	PIPE SIZE & MATERIAL (STREET)	PIPE SIZE & MATERIAL (PROP.)	SHORT & LONG MEASUREMENT	CORP. LOCATION	REMARKS
* 886 SELKIRK AVE	12 LEAD	12 CU	OPP EL OF HOUSE 67.97 WWL OF SINCLAIR	0.3 E OF S/C	RENEW SERVICE
RESIDENTIAL					
* 885 SELKIRK AVE	-	20 CU	0.76 EEL OF 885	0.91 E S/C 883	RENEW TO PL WITH 20 CU WYED W/ 883 (SEPARATE SERVICES)
RESIDENTIAL					
884 SELKIRK AVE	20 CU	20 CU	6.71 WWL SINCLAIR	OPP S/C	RECONNECT SERVICE
RESIDENTIAL					
* 883 SELKIRK AVE	-	20 CU	0.46 EEL 885	0.91 E S/C 883	RENEW TO PL WITH 20 CU WYED W/ 885 (SEPARATE SERVICES)
RESIDENTIAL					
882 SELKIRK AVE	20 CU	20 CU	68.88 WWL SINCLAIR	3.35 W S/C	RECONNECT SERVICE
RESIDENTIAL					
881 SELKIRK AVE	20 CU	12 CU	2.13 WEL HOUSE	0.61 W OF S/C	RECONNECT SERVICE
RESIDENTIAL					
* 880 SELKIRK AVE	12 LEAD	12 CU	OPP EL OF BACK DOOR 43.28 WWL OF SINCLAIR	0.61 W OF S/C	RENEW SERVICE
RESIDENTIAL					
* 879 SELKIRK AVE	16 LEAD	12 CU	0.61 WEL OF HOUSE 43.59 WWL OF SINCLAIR	0.3 E OF S/C	RENEW SERVICE
RESIDENTIAL					
877 SELKIRK AVE	20 CU	12 CU	0.76 WEL OF HOUSE 35.66 WWL OF SINCLAIR	OPP S/C	RECONNECT SERVICE
RESIDENTIAL					
876 SELKIRK AVE	20 CU	20 CU	1.22 WEL HOUSE 35.66 WWL SINCLAIR	OPP S/C	RECONNECT SERVICE
RESIDENTIAL					
875 SELKIRK AVE	20 CU	12 CU	0.76 WEL OF BLDG 27.13 WWL OF SINCLAIR	0.61 W OF S/C	RECONNECT SERVICE
RESIDENTIAL					
* 874 SELKIRK AVE	20 CU	20 CU	0.3 W/EPL	OPP S/C	RENEW TO PL WITH 20 CU WYED W/ 872 (SEPARATE SERVICES)
RESIDENTIAL					
* 872 SELKIRK AVE	20 CU	12 CU	0.61 WWL OF HOUSE 25.3 WWL SINCLAIR ST	OPP CS	RENEW TO PL WITH 20 CU WYED W/ 874 (SEPARATE SERVICES)
RESIDENTIAL					
* 865 SELKIRK AVE	12 LEAD	12 CU	2.74 WEL OF FOUNDATION 11.58 WWL OF SINCLAIR	SAME AS S/C	RENEW SERVICE
RESIDENTIAL					
862 SELKIRK AVE	25 CU	25 CU	0.82 SNL OF FOUNDATION 3.75 SSL OF SELKIRK	OPP S/C	RECONNECT SERVICE
RESIDENTIAL					
861 SELKIRK AVE	20 CU	20 CU	EWBL	0.3 EWBL	RECONNECT SERVICE
RESIDENTIAL					
860 SELKIRK AVE	12 CU	12 CU	1.7 W/E LL	SAME AS S/C	RECONNECT SERVICE
RESIDENTIAL					
850 SELKIRK AVE	12 LEAD	12 CU	1.22 WEL OF HOUSE 39.62 EEL OF SINCLAIR	1.52 W OF S/C	RECONNECT SERVICE
RESIDENTIAL					
825 SELKIRK AVE	50 CU	50 CU	9.3 WEL OF SCHOOL 47.55 WWL OF ARLINGTON	OPP S/C	RECONNECT SERVICE
COMMERCIAL					
146/148/150/152 SELKIRK	25 CU	25 CU	5.64 WEL BLDG	OPP S/C	RECONNECT SERVICE
RESIDENTIAL					

\* SERVICES TO BE RENEWED TO R



NOTE: VALVES TO BE INSTALLED COUNTER-CLOCKWISE TO CLOSE

FOR INDEX SEE D-15983

**ENGINEERS GEOSCIENTISTS MANITOBA**  
 Certificate of Authorization  
 Stantec Consulting Ltd.  
 No. 1301

LOCATION APPROVED UNDERGROUND STRUCTURES

B.M. 25-11 N.W. Cor. Arlington St. & Selkirk Ave., Tolt. in S. Conc. Foundation of King Edward Community School, 0.5 m W. & 0.1 m below Tyndall Stone of the most S. Ely. Cor. of School.

ELEV. 232.212m

SUPV. U/G STRUCTURES COMMITTEE DATE

NOTE: LOCATION OF UNDERGROUND STRUCTURES AS SHOWN ARE BASED ON THE BEST INFORMATION AVAILABLE BUT NO GUARANTEE IS GIVEN THAT ALL EXISTING UTILITIES ARE SHOWN OR THAT THE GIVEN LOCATIONS ARE EXACT. CONFIRMATION OF EXISTENCE AND EXACT LOCATION OF ALL SERVICES MUST BE OBTAINED FROM THE INDIVIDUAL UTILITIES BEFORE PROCEEDING WITH CONSTRUCTION.

NO.	REVISIONS	DATE	BY
03	ISSUED FOR TENDER	2021.04.09	RS
02	ISSUED FOR 66% REVIEW	2021.03.19	RS
01	ISSUED FOR 30% REVIEW	2021.03.05	RS

**Stantec**

DESIGNED BY: RS  
 CHECKED BY: RS  
 DRAWN BY: SC  
 APPROVED BY: RS  
 RELEASED FOR CONSTRUCTION

SCALE: HORIZONTAL 1:250  
 VERTICAL 1:50

DATE: 2019.01.15

ENGINEER'S SEAL

CONSULTANT DRAWING NUMBER: C-208

TENDER NUMBER: 198-2021

**THE CITY OF WINNIPEG**  
 WATER AND WASTE DEPARTMENT  
 ENGINEERING DIVISION

2021 WATERMAIN RENEWALS  
 CONTRACT 6  
 SELKIRK AVENUE  
 775 E OF McPHILLIPS STREET TO  
 900 E OF McPHILLIPS STREET

SHEET 10 OF 14  
 CITY DRAWING NUMBER: D-15991

