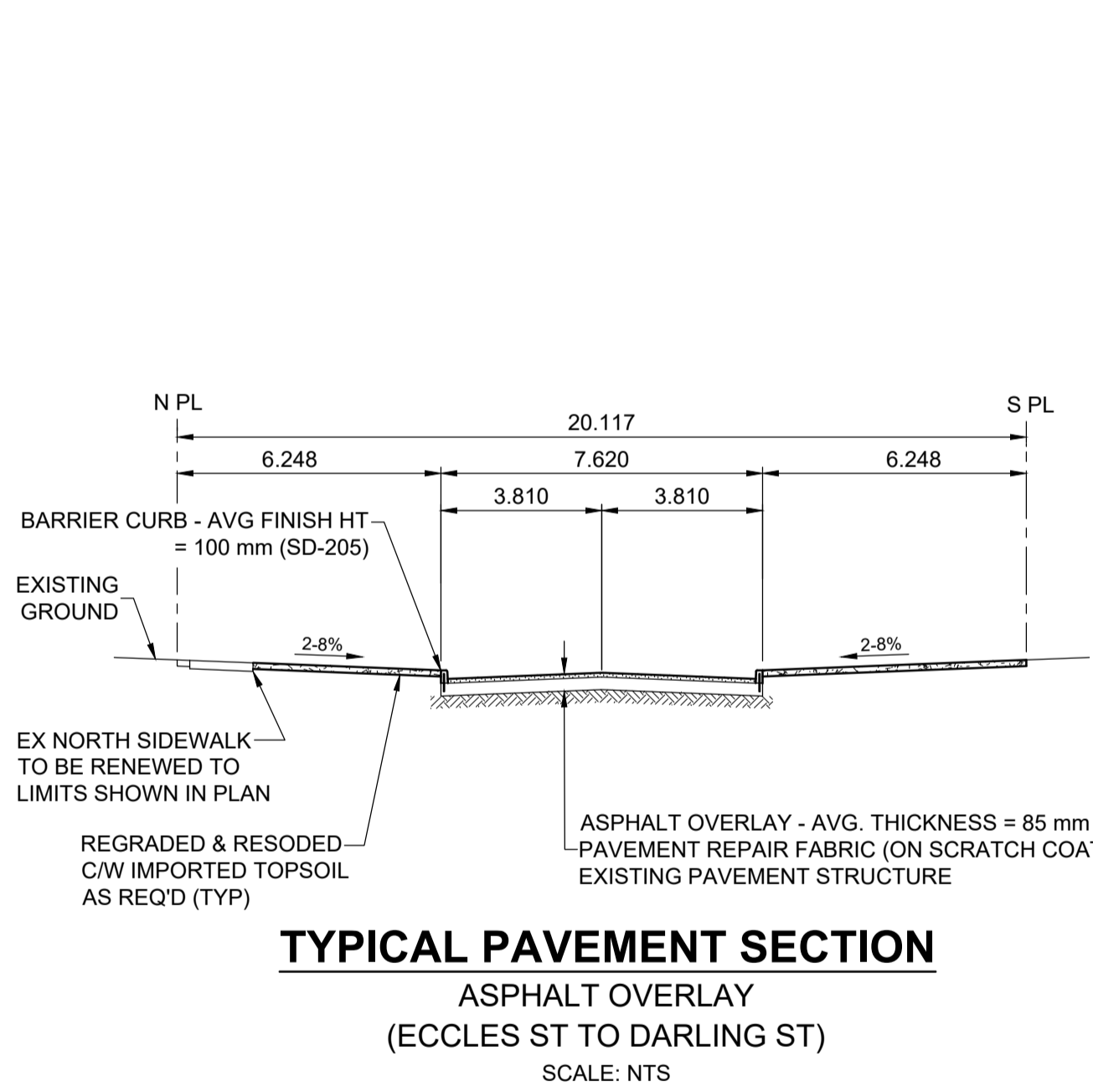
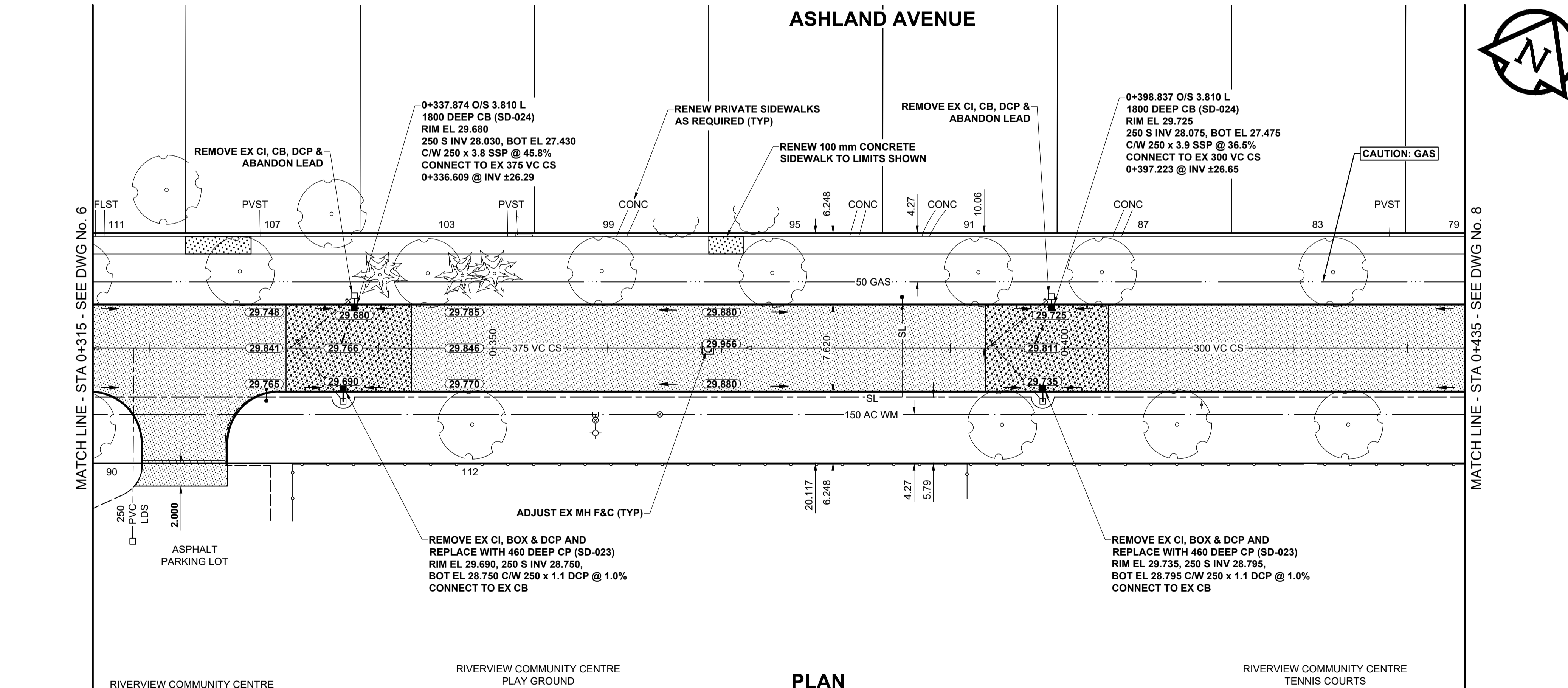


- NOTES**
- ADJUST MH AND CB RIMS TO NEW GRADES.
  - LAMP STANDARDS, HYDRO POLES, AND ANCHORS THAT REQUIRE TEMPORARY SUPPORT, REMOVAL OR REPLACEMENT, TO BE DONE SO AT THE EXPENSE OF THE CONTRACTOR AS NECESSARY.
  - CONTRACTOR TO REGRADE/RENEW EXISTING PRIVATE SIDEWALKS TO LIMITS AS SHOWN. SIDEWALKS TO BE RENEWED WITH CONCRETE UNLESS NOTED OTHERWISE.
  - CONTRACTOR TO TAKE PRECAUTIONARY STEPS TO PROTECT EXISTING TREES WITHIN THE LIMITS OF CONSTRUCTION FROM DAMAGE FROM CONSTRUCTION ACTIVITIES AS OUTLINED IN THE SPECIFICATIONS.
  - CONTRACTOR TO CONFIRM THE LOCATION OF ALL UTILITIES/SERVICES IN THE FIELD PRIOR TO CONSTRUCTION.
  - MODIFIED BARRIER CURB TO BE USED AT ALL INTERSECTION RADII, BACK LANE RADII AND BULLNOSES.
  - CONTRACTOR TO OVERLAY DRIVEWAYS TO ENSURE POSITIVE DRAINAGE TO NEW STREET GRADES. FINAL LIMITS TO BE DETERMINED IN THE FIELD BY CONTRACT ADMINISTRATOR.
  - CB SD-023 & SD-024 OFFSETS ARE DIMENSIONED TO BOC. CB SD-025 OFFSETS ARE DIMENSIONED O/C.
  - REFER TO TENDER FOR DETAILS REGARDING TRAFFIC MANAGEMENT.
  - ADD 200.000 m TO ABBREVIATED ELEVATIONS TO OBTAIN GEODETIC ELEVATIONS.



EXISTING		NEW		EXISTING		NEW		EXISTING		NEW	
LEGEND - PLAN		LEGEND - PLAN		LEGEND - PLAN		LEGEND - PLAN		LEGEND - PLAN		LEGEND - PLAN	
	GAS		MANHOLE		CONCRETE PAVEMENT		LOCATION APPROVED		MTS HANDWELL/PEDESTAL		CATCH BASIN/CATCH PIT
	HYDRO HANDWELL/CABINET		TREE		ASPHALT PAVEMENT		SUPR. U/G STRUCTURES		LAND DRAINAGE SEWER		PROPERTY LINE
	CATV/FIBRE OPTIC		TEST HOLE		PAVING STONE		DATE		SANITARY/COMBINED SEWER		SURVEY BAR
	TRAFFIC SIGNALS/PIT		TH-12		GRAVEL		NOTE:		CB LEAD/SSP/DCP		BOC/EDGE OF PAVEMENT
	WATERMAIN		ELEVATION		RAMP CURB		NOTE:		SUBDRAIN		ELEVATION
	DITCH		TRAFFIC SIGN		PLANING/REMOVAL		NOTE:		EXISTING		NOTE:

B	ISSUED FOR TENDER	20/04/20	RPB
A	ISSUED FOR REVIEW	20/03/13	RPB
No.	REVISIONS	Y/M/MDD	BY

DESIGNED BY	RPB	CHECKED BY	JGK
DRAWN BY	DML	APPROVED BY	BWB
RELEASED FOR CONSTRUCTION			
CONSULTANT FILE NAME 1905658-Ashland-PP-03.dwg			

**ENGINEERS GEOSCIENTISTS MANITOBA**  
Certificate of Authorization  
MORRISON HERSHFIELD  
No. 1736

TENDER No. 19-2020

**THE CITY OF WINNIPEG**  
PUBLIC WORKS DEPARTMENT  
ENGINEERING DIVISION

**2020 LOCAL STREET RENEWAL PROGRAM**  
**ASHLAND AVENUE**  
MABEL ST TO CHURCHILL DR  
ASPHALT RECONSTRUCTION & REHABILITATION  
PAVING AND GRADING  
STA 0+315 TO STA 0+435

CITY DRAWING NUMBER: N/A  
SHEET 7 OF 20  
DRAWING NUMBER: 7