

MANITOBA HYDRO SHALL CUT, CAP & ABANDON ORIGINAL FEED TO THE STREET LIGHTS PROPOSED TO REMOVAL. ALL FINAL CONNECTIONS WILL BE COMPLETED BY MANITOBA HYDRO.

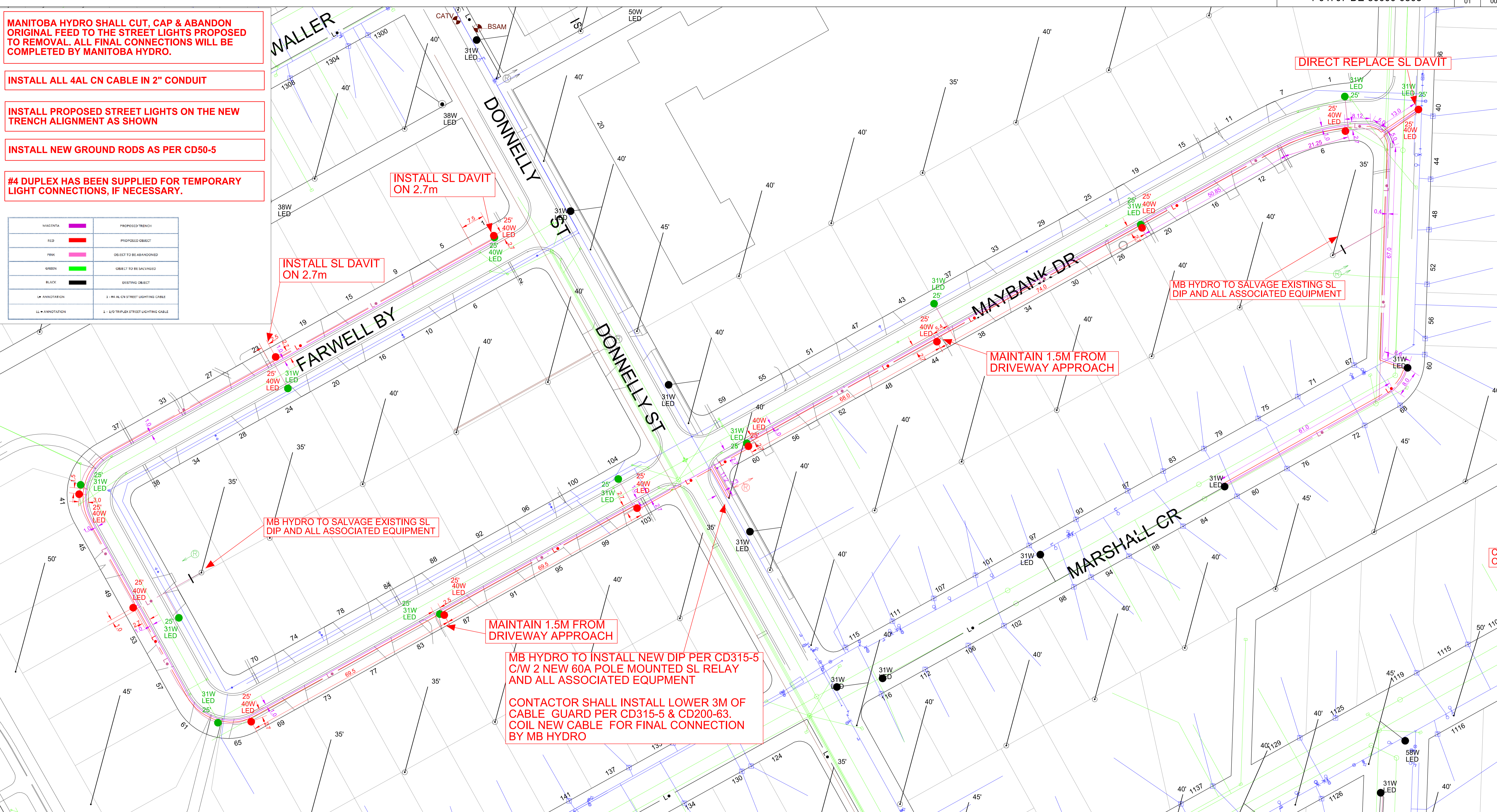
INSTALL ALL 4AL CN CABLE IN 2" CONDUIT

INSTALL PROPOSED STREET LIGHTS ON THE NEW TRENCH ALIGNMENT AS SHOWN

INSTALL NEW GROUND RODS AS PER CD50-5

#4 DUPLEX HAS BEEN SUPPLIED FOR TEMPORARY LIGHT CONNECTIONS, IF NECESSARY.

MAGENTA	PROPOSED TRENCH
RED	PROPOSED OBJECT
PINK	OBJECT TO BE ABANDONED
GREEN	OBJECT TO BE SALVAGED
BLACK	EXISTING OBJECT
L* ANNOTATION	1 - #4 AL OF STREET LIGHTING CABLE
LL* ANNOTATION	1 - 1/0 TRIPLEX STREET LIGHTING CABLE



INSTALL SL DAVIT ON 2.7m

INSTALL SL DAVIT ON 2.7m

DIRECT REPLACE SL DAVIT

MB HYDRO TO SALVAGE EXISTING SL DIP AND ALL ASSOCIATED EQUIPMENT

MAINTAIN 1.5M FROM DRIVEWAY APPROACH

MB HYDRO TO SALVAGE EXISTING SL DIP AND ALL ASSOCIATED EQUIPMENT

MAINTAIN 1.5M FROM DRIVEWAY APPROACH

MB HYDRO TO INSTALL NEW DIP PER CD315-5 C/W 2 NEW 60A POLE MOUNTED SL RELAY AND ALL ASSOCIATED EQUIPMENT

CONTACTOR SHALL INSTALL LOWER 3M OF CABLE GUARD PER CD315-5 & CD200-63. COIL NEW CABLE FOR FINAL CONNECTION BY MB HYDRO

AUTHORITY	NOTIFIED	NOT RECD	OBTAINED
DISTRICT	2020 04 13		
C.O.W./MUNICIPAL	2020 04 13		
M.T.S.			
GAS			
SHAW			
EASEMENTS			
COMMUNICATIONS		X	
S.C.C.			
DEPT. OF HIGHWAYS		X	

REMOVED				
Quantity	Fixture Type	Wattage	Pole Type	
12	LED	31W	EXCLUSIVE	

INSTALLED				
Quantity	Fixture Type	Wattage	Pole Type	
12	LED	40W	EXCLUSIVE	

REEL NUMBER	MANUFACTURER	MANUFACTURE DATE

**NOTES:**  
**CONSTRUCTION STANDARDS**  
 TO BE CONSTRUCTED IN ACCORDANCE WITH MANITOBA HYDRO DISTRIBUTION AND SUBTRANSMISSION STANDARDS. LATEST REVISION. NO MAJOR CHANGE SHALL BE MADE WITHOUT APPROVAL OF THE DESIGN ENGINEER OR DELEGATE.  
**CUSTOMER ACCEPTANCE**  
 THE CUSTOMER SERVICE DEPARTMENT REPRESENTATIVE IS RESPONSIBLE FOR OBTAINING WRITTEN CUSTOMER AGREEMENT TO THE PROPOSED INSTALLATION PRIOR TO CONSTRUCTION COMMENCEMENT.  
**SITE GRADING**  
 THE DEVELOPER IS RESPONSIBLE FOR GRADING OF THE SITE TO WITHIN +/-0.15M OF FINISHED GRADE PRIOR TO CONSTRUCTION COMMENCEMENT. BENCHMARKS ARE TO BE OBTAINED FROM THE DEVELOPER OR CONSULTANT.

UNDERGROUND CABLES SHALL NOT BE INSTALLED IN THE SAME VERTICAL PLANE WITH OTHER UNDERGROUND SYSTEMS:  
 SUCH AS PRIVATELY OWNED SUPPLY CABLES, GAS, WATER, SEWER LINES OR ANY FOREIGN CONDUIT. INSTALLATION WITH COMMUNICATION CABLE IN THE SAME VERTICAL PLANE IS PERMITTED WITH JOINT USE INSTALLATION.  
 A MINIMUM HORIZONTAL SEPARATION OF 0.3M (DEFINED AS THE HORIZONTAL DISTANCE BETWEEN TWO VERTICAL PLANES) SHALL BE OBTAINED BETWEEN MANITOBA HYDRO OWNED UNDERGROUND CABLE AND OTHER UNDERGROUND SYSTEMS.  
 SEE TABLE 1 AND 2 FROM C22.3-N0.7-10 PAGES 34 & 35

\*STREET LIGHT PLACEMENT FOLLOWS IES STANDARDS AND THEY ARE PLACED ACCORDINGLY USING DRIVEWAY LOCATIONS PROVIDED BY THE DEVELOPER. DRIVEWAY LOCATIONS THAT HAVE BEEN CHANGED AFTER THE DESIGN HAS BEEN SEALED RESULTING IN A CONFLICT BETWEEN STREETLIGHTS AND THE DRIVEWAY ARE THE RESPONSIBILITY OF THE DEVELOPER TO RECOVER THE COSTS ASSOCIATED WITH RELOCATING THE STREETLIGHTS.\*

BANNERS AND ASSOCIATED HARDWARE TO BE REMOVED AND RETURNED TO THE CITY OF WINNIPEG, 1277 PACIFIC AVE WITH AN ITEMIZED LIST AND QUANTITIES.

CONTACT "CLICK BEFORE YOU DIG MANITOBA" AT  
[ClickBeforeYouDigMB.com](http://ClickBeforeYouDigMB.com)  
**THREE FULL WORKING DAYS**  
 PRIOR TO CONSTRUCTION FOR LOCATION OF EXISTING WATER, WASTEWATER, LAND DRAINAGE UTILITIES AND MANITOBA HYDRO UTILITIES

PRELIMINARY NOT TO BE USED FOR CONSTRUCTION

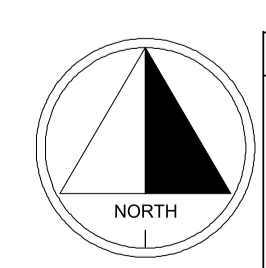
\*\*DISCLAIMER\*\*  
 THE INDICATION OF OTHER PARTIES ON THIS DRAWING ARE FOR TRENCH LOCATION PURPOSES ONLY. REFER TO THE OTHER PARTY'S DRAWINGS FOR DESIGN DETAILS.

INFORMATION PERTAINING TO THE SIZE, TYPE AND LOCATION OF MANITOBA HYDRO FACILITIES AND INSTALLATIONS IS ILLUSTRATIVE AND SHOULD NOT BE RELIED ON FOR THE PURPOSES OF ANY ACTIVITY BEING CONDUCTED AT OR NEAR THE IDENTIFIED HYDRO INSTALLATIONS. ALL LOCATIONS AND EQUIPMENT MUST BE VERIFIED BY APPROPRIATE HYDRO DISTRICT OFFICES PRIOR TO ANY PHYSICAL ACTIVITY BEING UNDERTAKEN AT OR NEAR HYDRO INSTALLATIONS.

THIS IS A PRINT OF A DOCUMENT THAT HAS BEEN ELECTRONICALLY AUTHENTICATED WITH TECHNOLOGY AUTHORIZED BY THE EGM. THE ORIGINAL IS IN ELECTRONIC FORM.

TO BE CONSTRUCTED IN ACCORDANCE WITH MANITOBA HYDRO DISTRIBUTION AND SUBTRANSMISSION STANDARDS. LATEST REVISION. NO MAJOR CHANGE SHALL BE MADE WITHOUT APPROVAL OF THE DESIGN ENGINEER OR DELEGATE.

CONTACT	NAME	PHONE NUMBER	E-MAIL ADDRESS
DESIGN	IRENA GOMON	204-791-7680	igomon@hydro.mb.ca
DESIGN ENGINEER	MATT SINGER	204-612-3882	msinger@hydro.mb.ca
DE & C PROJECTS SECTION	DARRIN WACH	204-360-3252	dwach@hydro.mb.ca
ENERGY SERVICE ADVISOR	TIM LOEB	204-791-2622	tloeb@hydro.mb.ca
UG CONSTRUCTION	BRENT KROEKER	204-793-1670	bkroeker@hydro.mb.ca
OH CONSTRUCTION	WAYNE IRELAND	204-771-5212	wireland@hydro.mb.ca
HYDRO GAS			
SHAW			@SURLTS.CA
MTS			@SURLTS.CA
CUSTOMER REP	MONICALI	204-799-9299	mli@winipeg.ca
DISTRICT ENG TECH	TODD FOUNTAIN	204-360-7407	tfountain@hydro.mb.ca
CONSULTANT	OWEN COOLIDGE	204-977-8370	ooolidge@omsonmermaid.com



DATE	REVISIONS	BY	CHKD.	APP.

DRAWING NUMBER	REFERENCE DRAWINGS	DRAWN	ING
	COW UG STRUCTURE APPROVAL		

DATE	SCALE	CHECK
2020 04 17	1:500	

AREA NUMBER	MANITOBA HYDRO DISTRIBUTION ENGINEERING
4901	WO# P-33641 NETWORK # 4306346
STATION NUMBER	CSC: FORT GARRY
FEEDER NUMBER	CUSTOMER SERVICE
SYSTEM VOLTAGE	RELOCATE 12 STREET LIGHTS AND STREET LIGHT CABLES
	120V