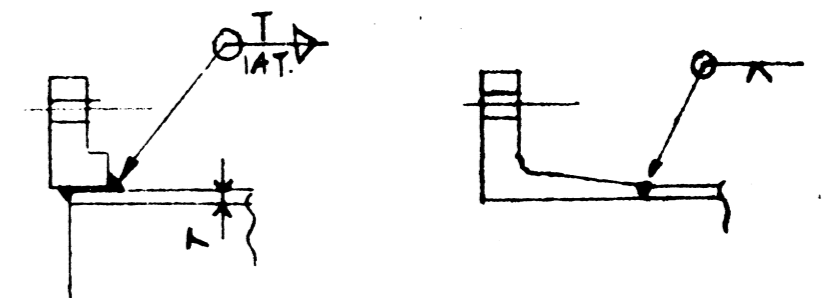
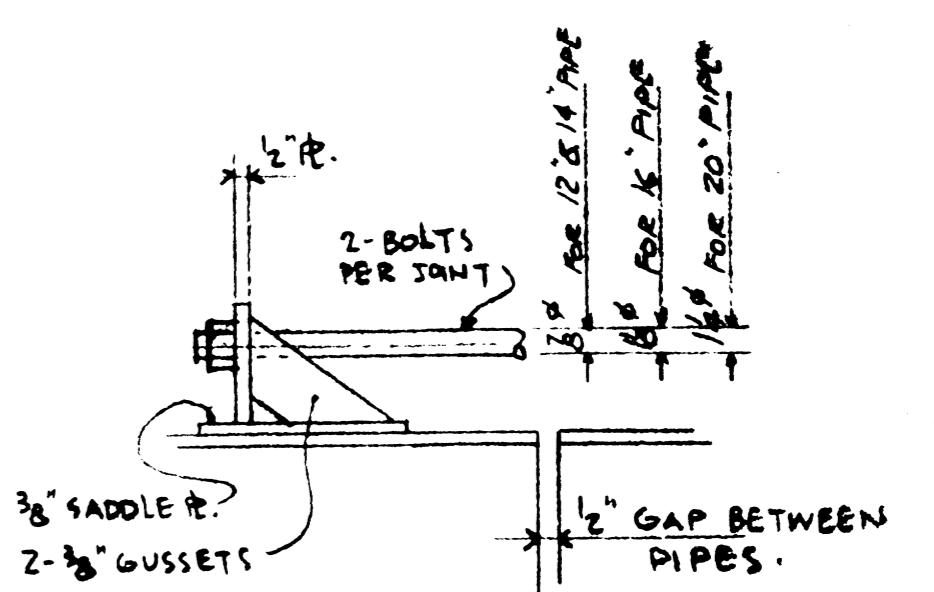


MARK	REQ'D	DESCRIPTION	LENGTH	REMARKS
------	-------	-------------	--------	---------



FLGE. WELDING DETAILS



HARNES DETAIL AT DRESSERS

**GENERAL NOTES:**  
 DRESSER COUPLINGS BY M.B. & E.W. (STYLE 30 3/16 PIPE) ALL VALVES, ETC. BY OTHERS.  
 NO PIPE HANGERS, PIPE SUPPORTS, ETC. SUPPLIED BY M.B. & E.W.

REDUCERS ARE CONCENTRIC UNLESS NOTED ON DWG'S. REDUCERS ARE FABRICATED FROM P.  
 ELBOWS ARE "LONG RADIUS" UNLESS NOTED ON DWG'S. "SR" FLANGES ARE 150# SLIP ON OR WELDING NECK, FLAT FACE.

20" PRE-AGERATION PIPE - 1/4" WALL  
 12", 14" & 16" PIPE - 3/8" WALL UNLESS NOTED ON DWG'S.  
 4", 6" & 8" OUTLETS - SCH. 40 PIPE  
 PUDDLE FLANGES - 4" P.  
 GASKETS ARE FULL FACE, CLOTH INSERTED RUBBER, 5/8" THICK.

OUTSIDE OF UNDERGROUND PIPING (1/2") AT DRESSER COUPLING TO BE COATED & WRAPPED IN FIELD BY OTHERS.

PAINT (OUTSIDE OF PIPE) FOR THIS DWG. ONLY.  
 INSIDE BUILDING: ONE /SHOP COAT PRIMER -  
 IN CONC. WALLS: NO PAINT  
 OUTSIDE OF BUILDING: COAL TAR ENAMEL & ASBESTOS FELT WRAP.

**16-P-5(4)**

**16-P-5(4)**

APPROVED  
 SUBJECT TO SATISFACTORY  
 INSTALLATION AND PERFORMANCE  
 IN PLACE  
 JAMES F. MACLAREN LIMITED  
 OCT 19 1964

MARK	REQ'D	DESCRIPTION	LENGTH	REMARKS
------	-------	-------------	--------	---------

PRINTS		UNLESS OTHERWISE NOTED	
NO.	DATE	REVISIONS	BY
1	10/19/64	AS SHOWN	J.S.
2	10/20/64	REVISED TO APPROVAL DWG'S	J.S.

**MANTOBA BRIDGE & ENGINEERING WORKS**  
 DIVISION OF DOMINION BRIDGE COMPANY LIMITED  
 WINNIPEG - MANTOBA

MP 9786  
 PARTIALLY APPROVED

PIPING TO TANKS #3 & #2 COMPLETED.  
 DETAIL 'A' ADDED. MARKS ADDED.  
 DETAIL OF CONN. TO TANK #1 ADDED.  
 GREASE TANK INST. ELEV. REV'D FROM 24.3 TO 25.2.  
 REVISED TO APPROVAL DWG'S.

REVISIONS	DATE	BY	MARK
1	10/24/64	H.T.	
2	10/24/64	H.T.	
3	10/24/64	H.T.	
4	10/24/64	H.T.	
5	10/24/64	H.T.	

OFFICE COPIES