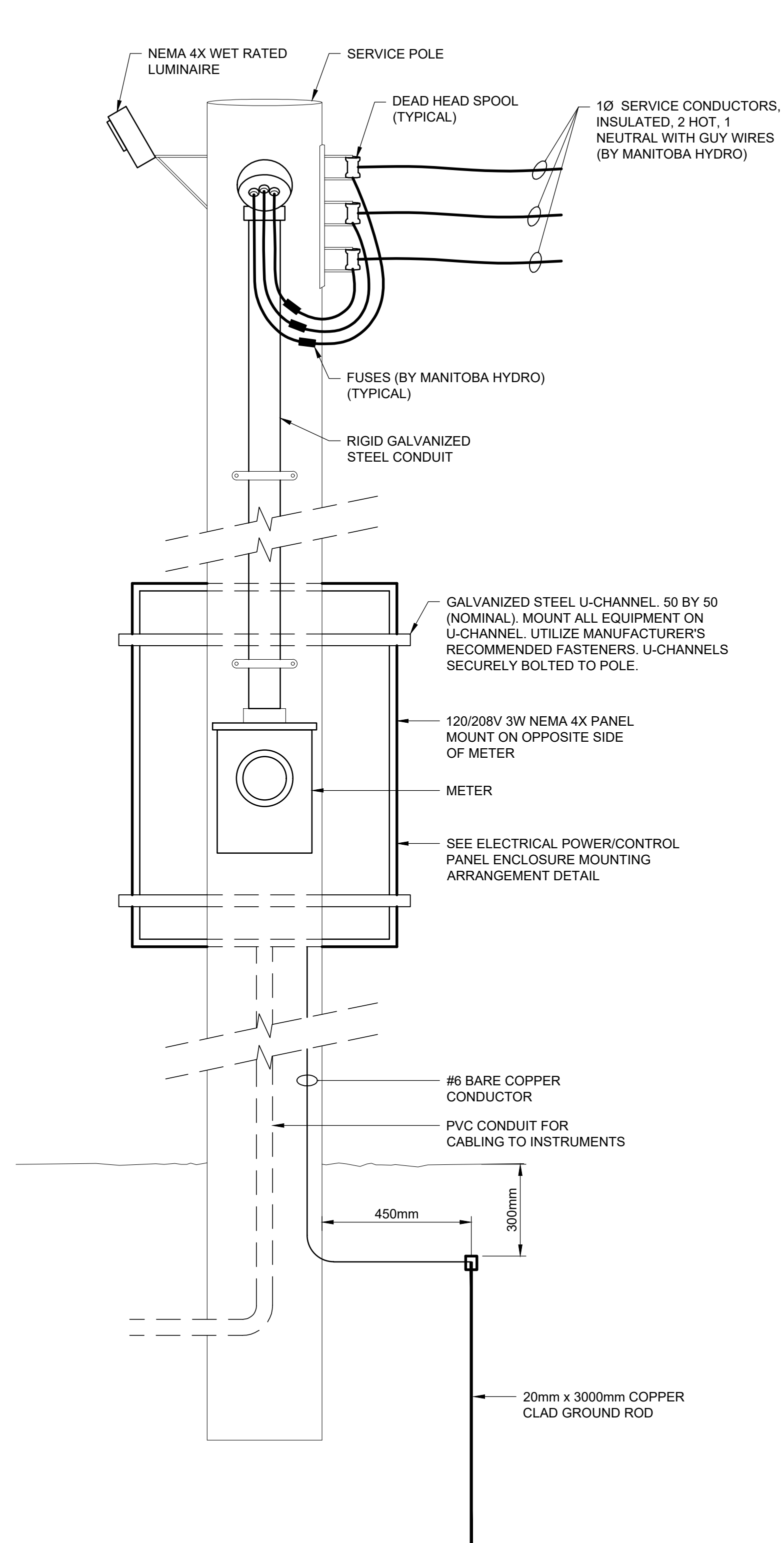


D SIZE 22" x 34" (559mm x 864mm)

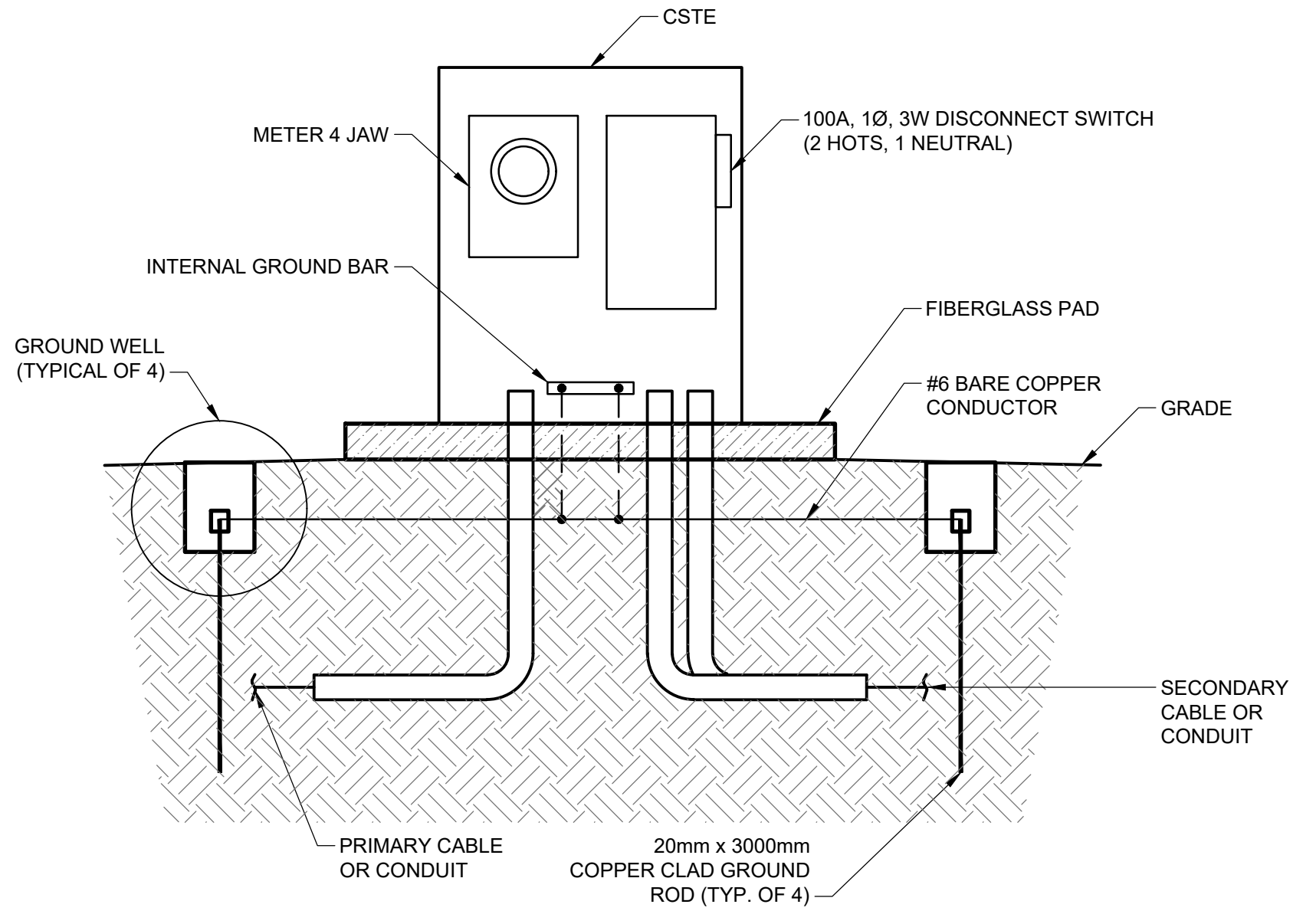
PLOT: 11/5/2020 2:12:08 PM

AECOM REVIEW DRAFT CHK AECOM FILE NAME: 60509089-SHT-30-0000-E-1003.dwg Saved By: pedersen



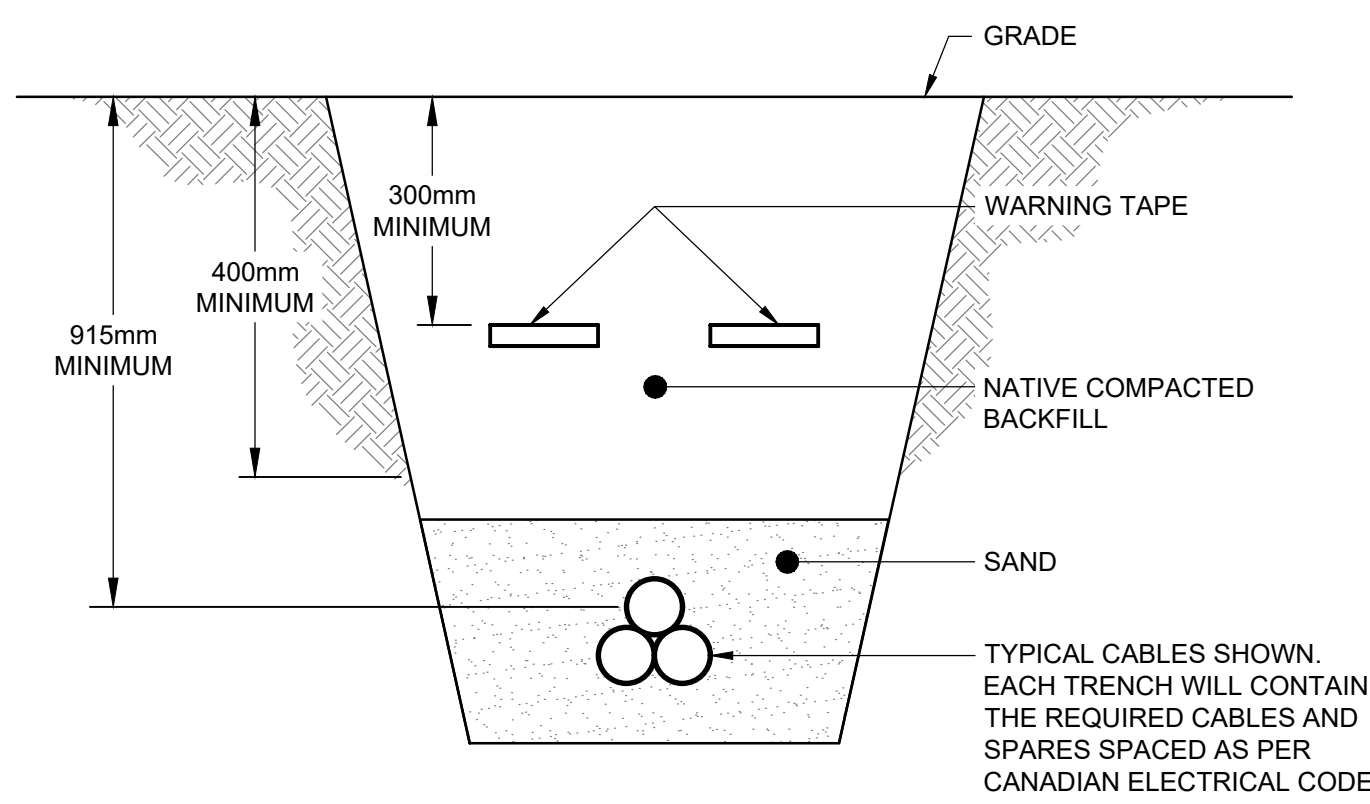
- SERVICE POLE DETAIL NOTES:**
1. THIS DETAIL PERTAINS TO WEST SIDE CONSTRUCTION (DRAWING E-1001) AND SHOULD NOT BE USED AS INSTRUCTION OR RECOMMENDATION FOR ANY EAST SIDE CONSTRUCTION (DRAWING E-1002).
 2. CONTRACTOR TO COORDINATE WITH MANITOBA HYDRO TO FIELD LOCATE POLE. APPROXIMATE LOCATION SHOWN ON DRAWING E-1001. LOCATE EAST OF GATE.
 3. COORDINATE WITH MANITOBA HYDRO FOR MAIN BREAKER MINIMUM SIZE IN THE PANEL, BUT ASSUME A MINIMUM SIZE OF 100A BREAKER, 18kAIC. ALSO INSTALL PANEL ACCORDINGLY.

SERVICE POLE DETAIL
N.T.S.



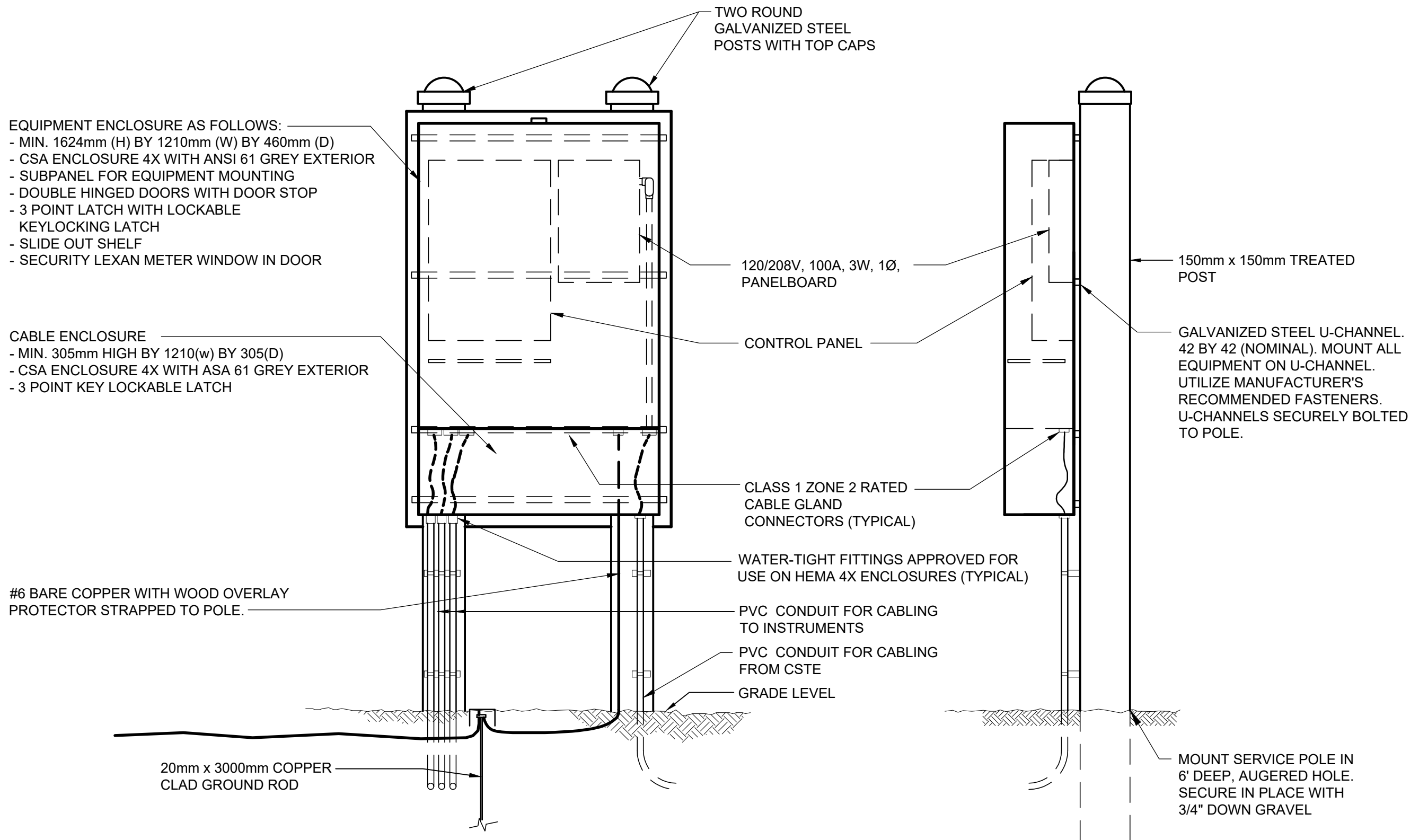
- PAD MOUNT CSTE DETAIL NOTES:**
1. THIS DETAIL PERTAINS TO EAST SIDE CONSTRUCTION (DRAWING E-1002) AND SHOULD NOT BE USED AS INSTRUCTION OR RECOMMENDATION FOR ANY WEST SIDE CONSTRUCTION (DRAWING E-1001).
 2. LOCATE ON FIBERGLASS PAD. SEE LOCATION ON DRAWING E-1002.
 3. SUPPLY CSTE COMPLETE WITH 1 PHASE, 100A 3W, NEMA 4X RATED DISCONNECT MOUNTED TO CSTE ENCLOSURE. CSTE ENCLOSURE TO BE OUTDOOR RATED.
 4. ROUTE 3C #1 AWG 1000V TECK 90 CABLING FROM CSTE TO PANELBOARD.

PAD MOUNT CSTE DETAIL
Scale NTS



- DIRECT BURIED TRENCH NOTES:**
1. DETAIL IS TYPICAL TO ILLUSTRATE REQUIRED CLEARANCES. CABLING SHOWN IS TYPICAL AND SHOULD BE MODIFIED AS PER THE REQUIRED SIZE AND TYPE OF CABLE STIPULATED IN THESE DRAWINGS WHEREVER TRENCHING IS REQUIRED.
 2. CONTRACTOR TO TAKE CARE WHEN TRENCHING TO FIELD LOCATE BEST PATH TO MINIMIZE LOSS OF AND DAMAGE TO TREES AND SHRUBBERY.

DIRECT BURIED TRENCH
N.T.S.



- PANEL MOUNTING NOTES:**
1. LOCATE INCONSPICUOUSLY, AVOIDING WOODED AREA AND SHRUBBERY AS BEST AS POSSIBLE BUT ENSURING ACCESSIBILITY. APPROXIMATE LOCATION ON DRAWING E-1001 AND E-1002.
 2. PROVIDE AND INSTALL 1 PHASE 120/208V, 3W, NEMA 4X RATED, 12 CIRCUIT PANEL BOARD WITH MAIN BREAKER. BREAKER RATING AS PER THE LATEST CEC. PROVIDE 2 x 15A SINGLE POLE SPARE BREAKERS IN THE PANEL.
 3. ROUTE 3C #1 AWG 1000V TECK 90 CABLING FROM CSTE TO PANELBOARD.
 4. ROUTE 3C #12 AWG TECK 90 CABLING TO INSTRUMENTS. SEE INSTRUMENTATION DRAWING.
 5. PROVIDE AND INSTALL ONE (1) SINGLE POLE 15A CIRCUIT BREAKER FOR INSTRUMENTATION.
 6. USE WATERTIGHT FITTINGS TO RETAIN NEMA 4X ENCLOSURE CLASSIFICATION.
 7. INSTALL GALVANIZED STEEL POSTS WITH TOP CAPS AS PER MANUFACTURER'S RECOMMENDATION.
 8. INSTALL TREATED PLYWOOD BACKBOARD SECURED TO STEEL POSTS. INSTALL STRUT ON BACKBOARD TO MOUNT PANELBOARD.

ELECTRICAL POWER / CONTROL PANEL ENCLOSURE MOUNTING ARRANGEMENT
N.T.S.

- GENERAL NOTES:**
1. ALL INSTALLATIONS TO COMPLY WITH THE LATEST EDITION OF THE CANADIAN ELECTRICAL CODE CSA 22.1, PART 1 AND IN ACCORDANCE WITH THE LATEST EDITION OF THE MANITOBA ELECTRICAL CODE AND ALL OTHER APPLICABLE LOCAL AMENDMENTS.
 2. ALL SUPPLIED ELECTRICAL DISTRIBUTION EQUIPMENT TO BE CSA RATED. EQUIPMENT WITHOUT A CSA RATING IS NOT ACCEPTABLE FOR INSTALLATION.

METRIC
WHOLE NUMBERS INDICATE MILLIMETRES
DECIMALIZED NUMBERS INDICATE METRES

| LOCATION APPROVED | | DATE | |
|---|-------------------------|----------|-----|
| SUPR. U/G STRUCTURES COMMITTEE | | | |
| NOTE: LOCATION OF UNDERGROUND STRUCTURES AS SHOWN ARE BASED ON THE BEST INFORMATION AVAILABLE. BUT NO GUARANTEE IS GIVEN THAT ALL EXISTING UTILITIES ARE SHOWN OR THAT THE GIVEN LOCATIONS ARE EXACT. CONFIRMATION OF EXISTENCE AND EXACT LOCATION OF ALL SERVICES MUST BE OBTAINED FROM THE INDIVIDUAL UTILITIES BEFORE PROCEEDING WITH CONSTRUCTION. | | | |
| NO. | ISSUED FOR CONSTRUCTION | 20/11/05 | KLC |
| | REVISIONS | YYMMDD | BY |

| | |
|--------------------|---------------------------|
| AECOM | |
| DESIGNED BY: MP/JR | CHECKED BY: SS |
| DRAWN BY: KLC | APPROVED BY: DA |
| HOR. SCALE: 1:750 | RELEASED FOR CONSTRUCTION |
| VERT. SCALE: N/A | |
| DATE: | DATE: |

PROFESSIONAL'S SEAL

CONSULTANT DRAWING NO.
60509089-SHT-30-0000-E-1003

THE CITY OF WINNIPEG
WATER AND WASTE DEPARTMENT

NORtheast INTERCEPTOR RIVER CROSSING
FLOW MONITORING INSTRUMENTATION

FLOW MONITORING
ELECTRICAL DETAILS

SHEET 3 OF 5
CITY DRAWING NUMBER
1-0110S-E0003-001
REV 0

TENDER NO. 753-2020

ENGINEERS GEOSCIENTISTS MANITOBA
Certificate of Authorization
AECOM Canada Ltd.
No. 4671 Date: 20/11/05