

SYRACUSE CRESCENT - LEFT (OUTSIDE)

SYRACUSE CRESCENT - RIGHT (INSIDE)

CONSTRUCTION NOTES:

- ALL WORK AND MATERIALS TO BE IN ACCORDANCE WITH LATEST REVISION OF THE CITY OF WINNIPEG STANDARD CONSTRUCTION SPECIFICATIONS.
- LEGAL PLAN AND UNDERGROUND INFORMATION FROM CITY OF WINNIPEG LBIS. CONTRACTOR TO VERIFY ALL UNDERGROUNDS IN THE FIELD.
- CONTRACTOR TO TAKE PRECAUTIONARY STEPS TO AVOID DAMAGE FROM CONSTRUCTION ACTIVITIES TO TREES WITHIN THE LIMITS OF CONSTRUCTION.
- LOCATION OF EXISTING UTILITIES/SERVICES TO BE CONFIRMED IN THE FIELD BY THE CONTRACTOR.
- ADJUST EXISTING WATER VALVES, WATER SERVICE CURB STOPS AND HYDRANT ASSEMBLIES TO GRADE.
- MODIFIED BARRIER CURB TO BE USED AT ALL INTERSECTION RADII.
- ADJUST MANHOLE AND CATCH BASIN RIMS TO NEW GRADES.
- CONTRACTOR TO REGRADE/RENEW EXISTING PRIVATE SIDEWALKS TO LIMITS AS SHOWN. SIDEWALKS TO BE RENEWED WITH CONCRETE UNLESS OTHERWISE NOTED.
- CB LEADS TO BE INSTALLED AT MIN 1.0% SLOPE OR AS DIRECTED BY THE CONTRACT ADMINISTRATOR.
- LIMITS OF BOULEVARD GRADING TO BE FINALIZED IN THE FIELD BY THE CONTRACT ADMINISTRATOR.
- CONTRACTOR TO CONFIRM LOCATION AND LIMITS OF SEWER REPAIRS BY PERFORMING VIDEO INSPECTION AND REVIEWING WITH THE CONTRACT ADMINISTRATOR PRIOR TO CONSTRUCTION.
- LAMP STANDARDS, HYDRO POLES AND ANCHORS THAT REQUIRE TEMPORARY SUPPORT, REMOVAL OR REPLACEMENT, TO BE DONE AT THE EXPENSE OF THE CONTRACTOR, AS NECESSARY.

ABBREVIATIONS:

CONC	CONCRETE ROADWAY
ASP	ASPHALT ROADWAY
ASP OVLY	ASPHALT OVERLAY ROADWAY
PVS	PAVING STONE/BRICK
TYP	TYPICAL
EX	EXISTING
MH	MANHOLE
WV	WATER VALVE
EL	ELEVATION
CB	CATCH BASIN
CP	CATCH PIT
CI	CURB INLET
CL	CONTROL LINE

METRIC

WHOLE NUMBERS INDICATE MILLIMETRES
DECIMALIZED NUMBERS INDICATE METRES

WARNING

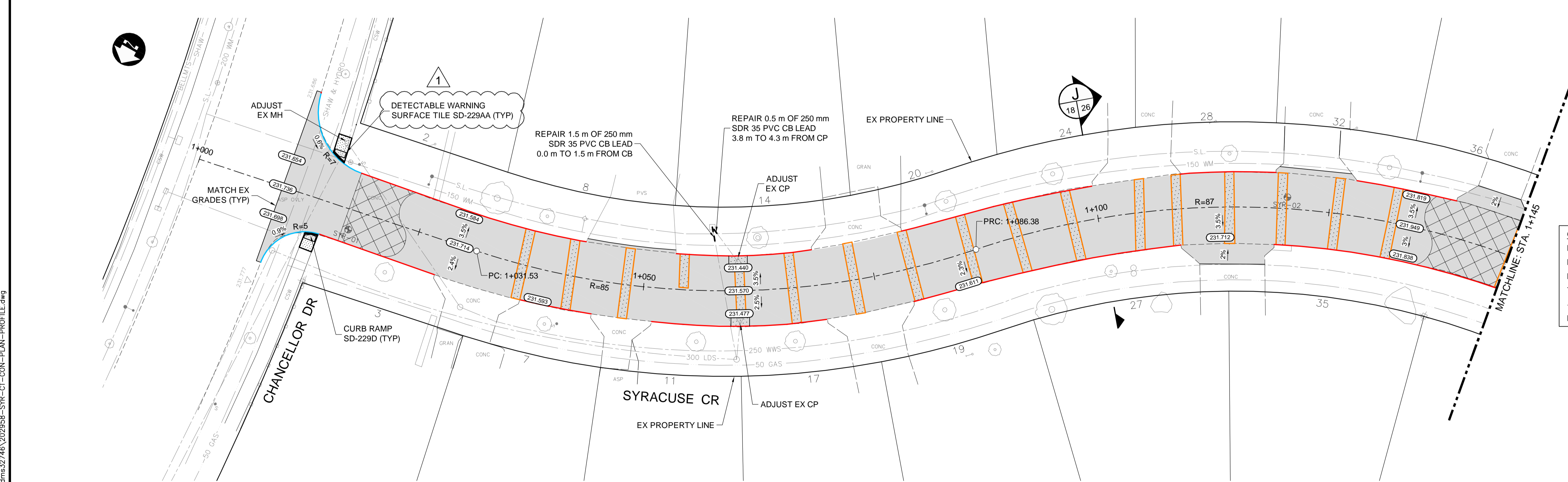
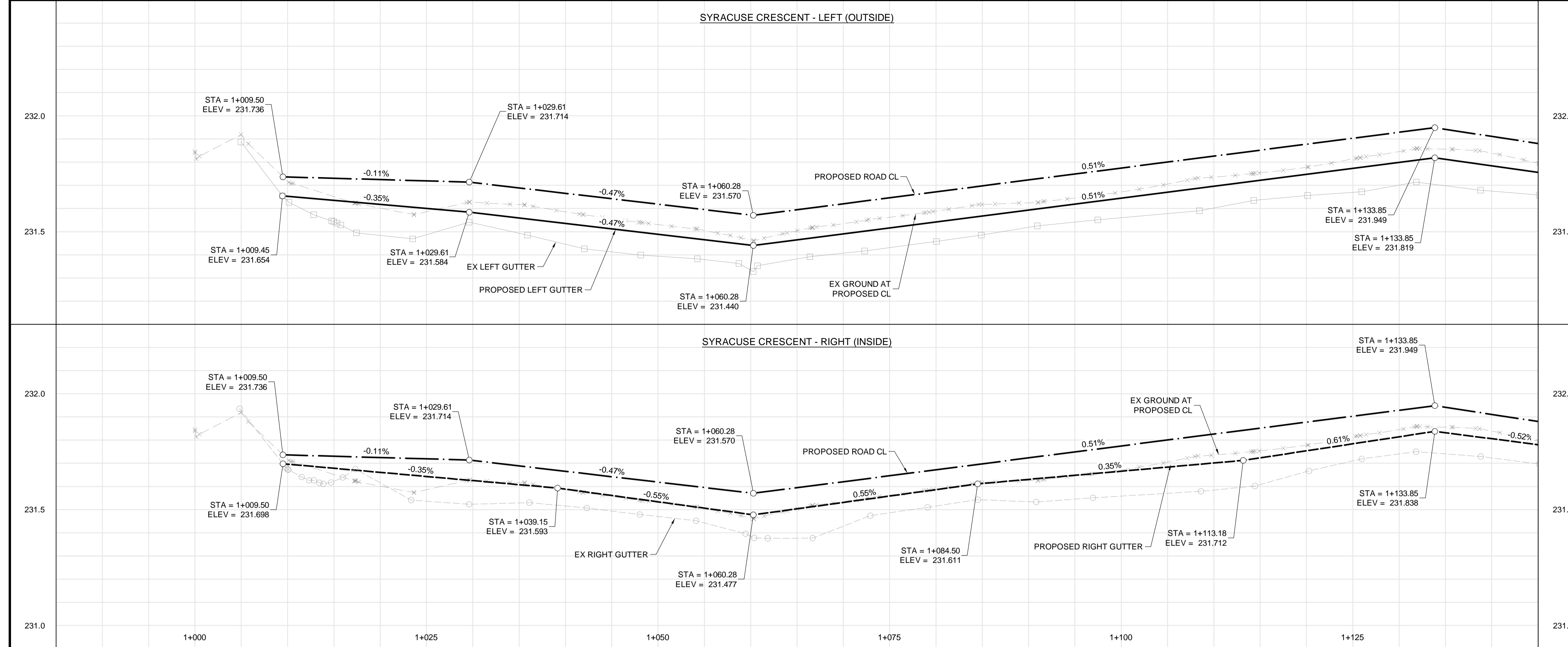
IF POWER EQUIPMENT OR EXPLOSIVES ARE TO BE USED FOR EXCAVATION ON THIS PROJECT THE CONTRACTOR MUST:

- NOTIFY THE GAS COMPANY OF THE PROPOSED LOCATION OF EXCAVATION.
- TAKE PRECAUTION TO AVOID DAMAGE TO GAS COMPANY INSTALLATIONS SEE PROVINCIAL REGULATION 210/72 FOR DETAILS.
- OBTAIN EXCAVATION PERMITS PRIOR TO CONSTRUCTION.

CURB LEGEND

BARRIER CURB (SD-203A, SD-204, SD-205 OR SD-206A)	
MODIFIED BARRIER CURB (SD-203B)	
BARRIER CURB AND GUTTER (SD-200)	
75 mm LIP CURB AND GUTTER (DETAIL 1, SHT 25)	
40 mm LIP CURB AND GUTTER (DETAIL 2, SHT 25)	
MODIFIED BARRIER CURB AND GUTTER (DETAIL 3, SHT 25)	

**PRELIMINARY ONLY
NOT FOR CONSTRUCTION**



EXISTING	LEGEND-PLAN	PROPOSED	EXISTING	LEGEND-PLAN	PROPOSED	EXISTING	LEGEND-PROFILE	PROPOSED
	HYDRANT			CONCRETE			WATERMAIN	
	VALVE			ASPHALT			LAND DRAINAGE SEWER	
	MANHOLE			SIDEWALK			WASTE WATER SEWER	
	CATCH BASIN			PAVING STONES			HYDRANT	
	CATCH PIT			PAVEMENT REPAIR FABRIC			VALVE	
	WATERMAIN			PARTIAL DEPTH REPAIR			C PROFILE	
	LAND DRAINAGE SEWER			PROPERTY LINE			NORTH/WEST GUTTER	
	WASTE WATER SEWER			ELEVATION			SOUTH/EAST GUTTER	
	HYDRO			CURB RAMP			NORTH/WEST DITCH	
	M.T.S.			DETECTABLE TILE			SOUTH/EAST DITCH	
	GAS							

UNDERGROUND STRUCTURES		B.M. ELEV.	
SUPPLY	U/G STRUCTURES	DATE	DATE
1	ISSUED AS ADDENDUM #1	21/03/08	DBW
0	ISSUED FOR TENDER	21/02/23	DBW
NO.	REVISIONS	DATE	BY

DESIGNED BY	TJH
DRAWN BY	TJH
CHECKED BY	JNC
APPROVED BY	DBW
HOR. SCALE	1:250
VERTICAL	1:10
RELEASED FOR CONSTRUCTION	
DATE	

THE CITY OF WINNIPEG
PUBLIC WORKS DEPARTMENT

2021 LOCAL STREETS RENEWAL PROGRAM 21-R-05:
DOWKER AVENUE, RILEY CRESCENT AND VARIOUS
OTHER LOCATIONS

SYRACUSE CRESCENT - PLAN-PROFILE
(START TO STA. 1+145)

CITY DRAWING NUMBER: 18 OF 26
CONSULTANT DRAWING NUMBER: 20-2958

C:\w\working\directory\projects\2020_40j\374R\202958-SYR-CR-CON-PLAN-PROFILE.dwg