

5 October 2020

202316-03-WPMV-CON.dwg



PROPERTY LINE

STEEL BOLLARD (TYP)  
SEE STRUCTURAL DRAWING FOR DETAILS

REMOVE AND REPLACE ASPHALT PARKING LOT. MATCH EXIST. STRUCTURE. INSTALL ELECTRICAL GROUND RODS AND NEW ELECTRICAL SERVICE CABLES. LIMITS AND LOCATION ARE APPROXIMATE.

PROPOSED BY-PASS CHAMBER FOR SOUTH 300 WWS FORCE MAIN

PROPOSED BY-PASS CHAMBER FOR NORTH 300 WWS FORCE MAIN

ASP

GRASS

TELUS FIBRE

CONC. SDW

50 GAS

300 AC VM

HYDRO SL

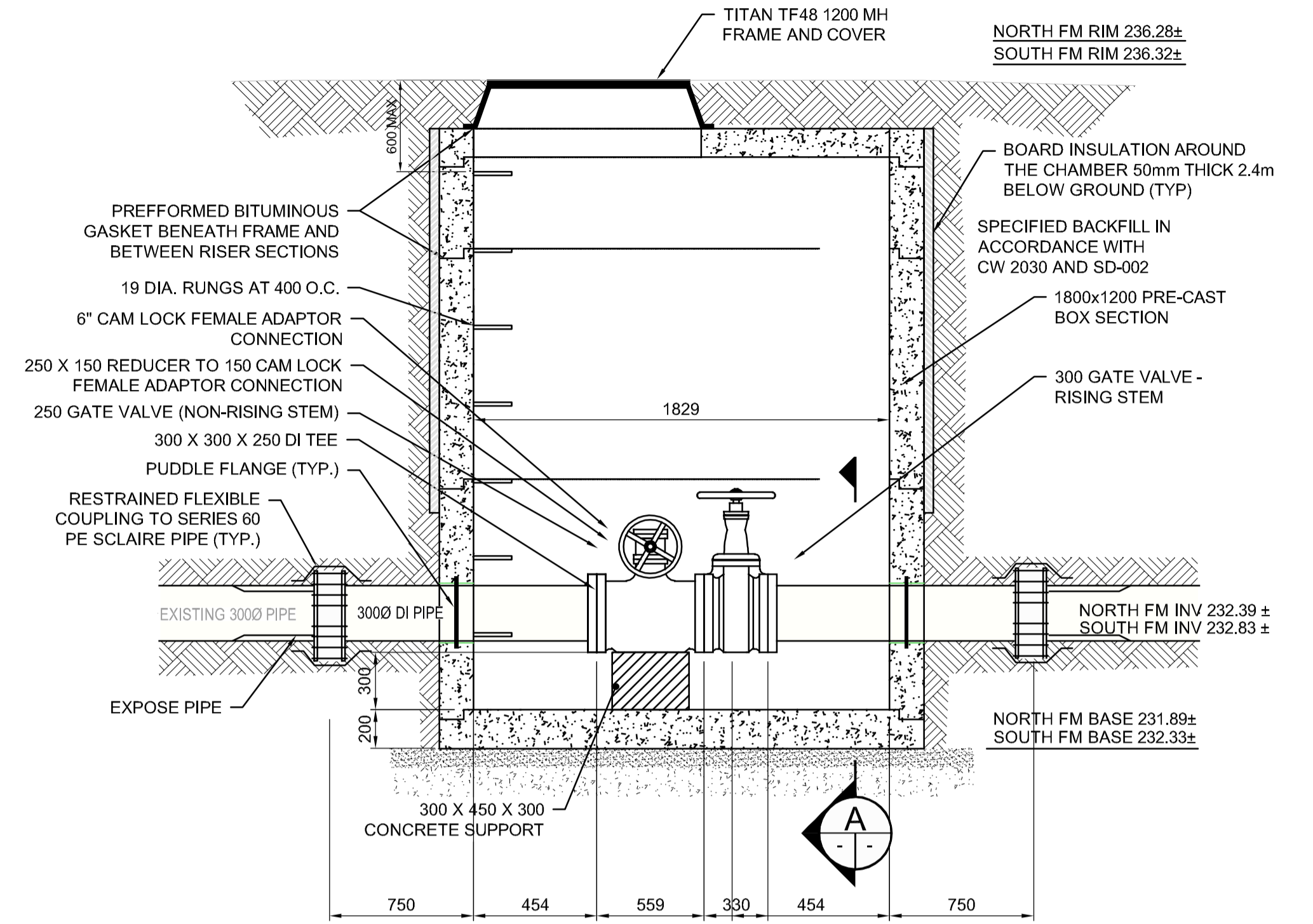
HYDRO

ASP DVLY

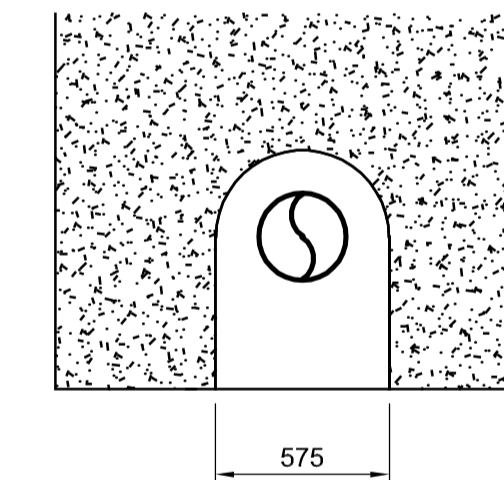
750 LDS

PRELIMINARY

NOT FOR CONSTRUCTION



1 BY-PASS CHAMBER SECTION  
SCALE NTS



A OPENING DETAIL  
SCALE NTS

**APEGM**  
Certificate of Authorization  
Dillon Consulting Limited (MB)  
No. 1789 Date: 09/08/20

				ENGINEER'S SEAL		<b>THE CITY OF WINNIPEG</b> WATER AND WASTE DEPARTMENT	
				DESIGNED BY: DES			
DRAWN BY: PMW		APPROVED BY: APP		CONSULTANT PROJECT NUMBER 20-2316		<b>WESTWOOD WASTEWATER PUMPING STATION UPGRADES</b> CIVIL - SITE PLAN BY-PASS CONNECTION DETAIL	
HOR. SCALE: AS SHOWN		RELEASED FOR CONSTRUCTION					
VERTICAL: AS SHOWN		DATE: SEPTEMBER 2020		DATE:		CITY DRAWING NUMBER: 1-0194L-C0003-001 SHEET 2 OF 23 CONSULTANT DRAWING NUMBER: C-01	
NO.	REVISIONS	DATE	BY	DATE	DATE		
4	ISSUED FOR ADDENDUM No. 2	06/10/20	BM				
3	ISSUED FOR TENDER	09/08/20	BM				
2	ISSUED FOR 98% CLIENT REVIEW	31/07/20	BM				
1	ISSUED FOR 66% CLIENT REVIEW	20/06/20	BM				