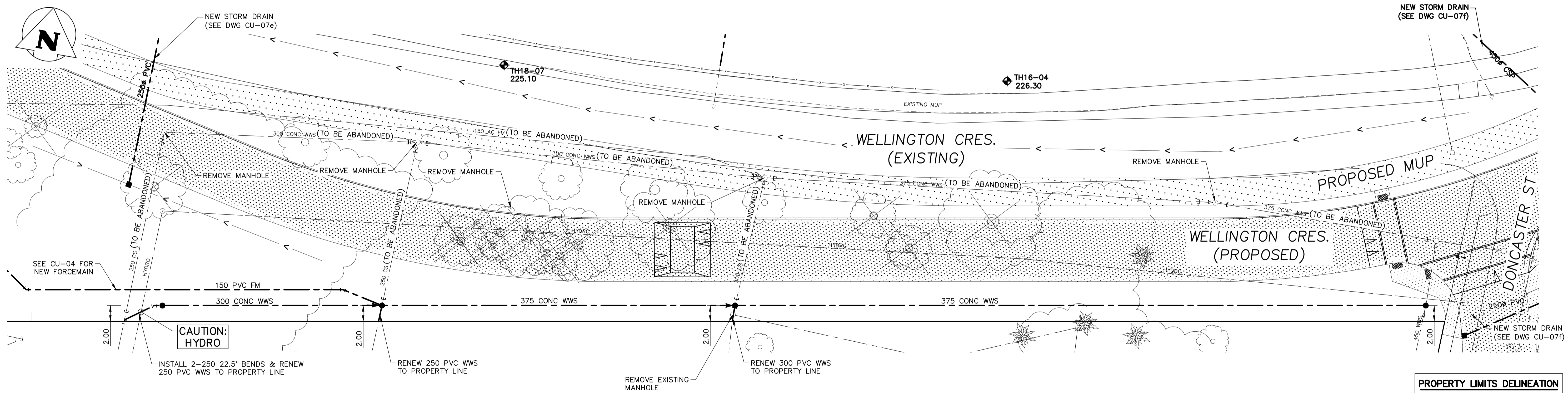
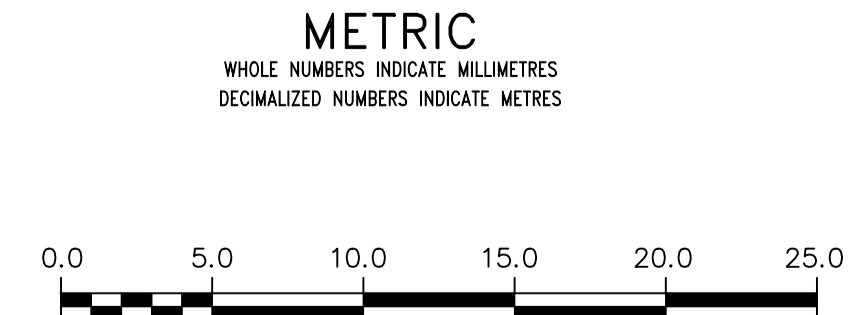


NOTE: CHAINAGES SHOWN ARE ALONG S PL WELLINGTON CR



**PROPERTY LIMITS DELINEATION**  
 DELINEATION OF PROPERTY LIMITS AS SHOWN ON THIS DWG DOES NOT REPRESENT A "LEGAL SURVEY". KGS GROUP MAKES NO REPRESENTATION OR WARRANTY AS TO THE ACCURACY OF PROPERTY LIMITS DELINEATED ON THIS DWG, NOR ON THE DIMENSIONAL ACCURACY OF DWG FEATURES RELATIVE TO THOSE PROPERTY LIMITS.

FOR INDEX PAGE  
 SEE DWG CU-00



**WARNING**  
 IF POWER EQUIPMENT OR EXPLOSIVES ARE TO BE USED FOR EXCAVATION ON THIS PROJECT THE CONTRACTOR MUST:  
 1) NOTIFY THE GAS COMPANY OF THE PROPOSED LOCATION OF EXCAVATION.  
 2) TAKE PRECAUTION TO AVOID DAMAGE TO GAS COMPANY INSTALLATIONS.  
 SEE PROVINCIAL REGULATION 210/72 FOR DETAILS

**LOCATION APPROVED UNDERGROUND STRUCTURES**  
 SUPV. U/G STRUCTURES COMMITTEE DATE  
 NOTE:  
 LOCATION OF UNDERGROUND STRUCTURES AS SHOWN ARE BASED ON THE BEST INFORMATION AVAILABLE BUT NO GUARANTEE IS GIVEN THAT ALL EXISTING UTILITIES ARE SHOWN OR THAT THE GIVEN LOCATIONS ARE EXACT. CONFIRMATION OF EXISTENCE AND EXACT LOCATION OF ALL SERVICES WAS OBTAINED FROM THE INDIVIDUAL UTILITIES BEFORE PROCEEDING WITH CONSTRUCTION.

B.M. ELEV.	NO.	REVISIONS	DATE	BY
	1	RE-ISSUED FOR TENDER	20/10/15	RBO
	0	ISSUED FOR TENDER	20/10/05	RBO

<b>KGS GROUP</b>		DESIGNED BY	TLE	CHECKED BY	RBO
		DRAWN BY	PwD	APPROVED BY	RBO
SCALE:		HORIZONTAL	1:250	RELEASED FOR CONSTRUCTION	
		VERTICAL	1:50	DATE	2020 10 15
PLOT DATE:		2020 10 15			

ENGINEER'S SEAL  
 CONSULTANT DRAWING NUMBER  
 CU-06

**THE CITY OF WINNIPEG**  
 WATER AND WASTE DEPARTMENT  
 ENGINEERING DIVISION

WELLINGTON CRESCENT  
 RIVERBANK, PATH AND ROADWAY PROJECT  
**SEWERMAIN**  
 PLAN AND PROFILE  
 S-MA60006608, S-MA60006609 & S-MA60006610

SHEET 25 OF 69  
 CITY DRAWING NUMBER  
 12600