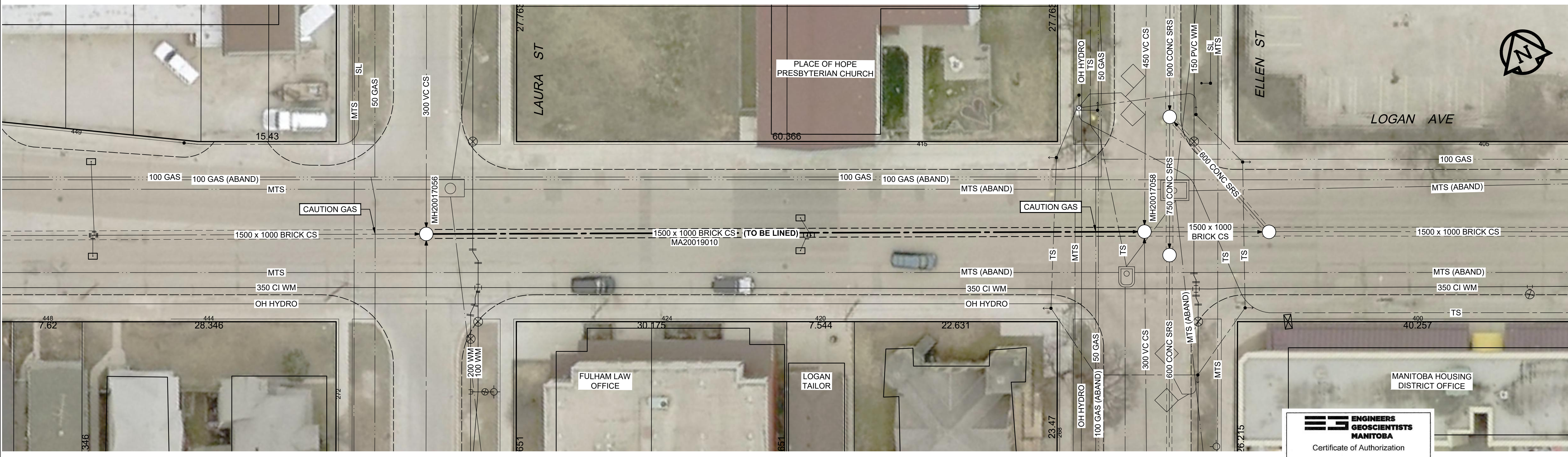
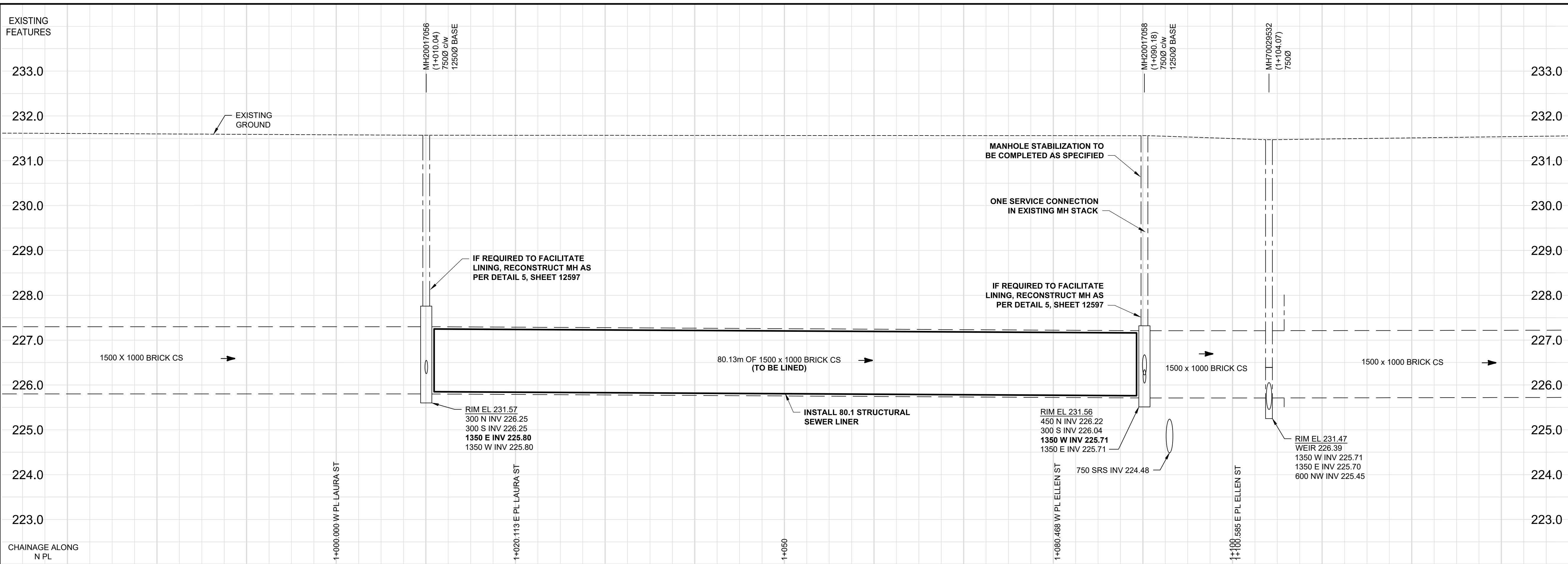


D SIZE 22" x 34" (559mm x 864mm)

PLOT: 10/20/2020 2:14:35 PM

AECOM FILE NAME: 60622950-SHT-00-0000-C-1005.dwg, Saved By: ccooper@k



SEWER JUNCTION INFORMATION

SERVICE COUNT	STATION	CLOCK
1	1016.74	2
2	1026.54	9
3	1026.54	3
4	1028.54	2
5	1034.64	9
6	1034.64	3
7	1042.24	9
8	1042.24	3
9	1045.04	2
10	1048.04	10
11	1048.04	2
12	1049.34	9
13	1049.34	3
14	1051.54	1
15	1051.54	9
16	1051.54	3
17	1056.24	9
18	1056.24	3
19	1064.24	9
20	1064.24	3
21	1071.98	9
22	1071.98	3

SEWER REHABILITATION NOTES:

- INSTALL ONE OF THE FOLLOWING REHABILITATION SYSTEMS:
 - CIPP
 - GRP
 - CCCP
- EXISTING SEWER DETERIORATION STATE: PARTIALLY DETERIORATED
- MINIMUM POST LINING DIMENSIONS: 1305mm x 805mm
- EXTEND REHABILITATION SYSTEM TO THE EDGE OF THE EXISTING MANHOLE OPENINGS AS SHOWN IN DETAIL 2, SHEET 12597
- CIPP REHABILITATION SHALL UTILIZE A PIPE ACCESS SHAFT AT ONE OF THE EXISTING MANHOLES, IF REQ'D
- GRP AND CCCP REHABILITATION MAY UTILIZE A PIPE ACCESS SHAFT AT EITHER OF THE EXISTING MANHOLES OR AT A MID POINT.
- SEE PIPELINE CLOSURE AND MANHOLE RECONSTRUCTION DETAILS ON SHEET 12597

GENERAL CONSTRUCTION NOTES:

- RESTORE SITE TO EXISTING CONDITIONS UPON COMPLETION OF WORK
- TRAFFIC CONTROL
 - REGIONAL STREET LANE CLOSURE REQUIRED: YES
 - IMPACTED REGIONAL STREET: LOGAN AVENUE
 - BUS ROUTE
 - MAINTAIN MINIMUM ONE LANE OF TRAFFIC IN BOTH DIRECTIONS ON LOGAN AVENUE AT ALL TIMES

METRIC

WHOLE NUMBERS INDICATE MILLIMETRES
DECIMALIZED NUMBERS INDICATE METRES

EXISTING	LEGEND - PLAN	NEW	EXISTING	LEGEND - PROFILE	NEW
150 WM	WATERMAIN	150 WM	150 WM	WATERMAIN	150 WM
HYDRANT	HYDRANT	REDUCER	REDUCER	HYDRANT	HYDRANT
VALVE	VALVE	COUPLING	COUPLING	VALVE	VALVE
300 LDS	LAND DRAINAGE SEWER	ANODE	ANODE	300 LDS	LAND DRAINAGE SEWER
250 WWS	WASTE WATER SEWER	HYDRO	HYDRO	250 WWS	WASTE WATER SEWER
MANHOLE	MANHOLE	MTS	MTS	PAVEMENT CROWN	PAVEMENT CROWN
CATCH BASIN	CATCH BASIN	GAS	GAS	N/W PROPERTY LINE	N/W PROPERTY LINE
CURB INLET	CURB INLET	TESTHOLE	TESTHOLE	S/E PROPERTY LINE	S/E PROPERTY LINE
CULVERT	CULVERT	LAMP STANDARD	LAMP STANDARD	N/W GUTTER	N/W GUTTER
PIPE ABANDONMENTS	PIPE ABANDONMENTS	TREE	TREE	S/E GUTTER	S/E GUTTER
SURVEY BAR	SURVEY BAR				
EXISTING	LEGEND - PLAN	NEW	EXISTING	LEGEND - PROFILE	NEW

LOCATION APPROVED
UNDERGROUND STRUCTURES

SUPR. U/G STRUCTURES DATE COMMITTEE
NOTE: LOCATION OF UNDERGROUND STRUCTURES AS SHOWN ARE BASED ON THE BEST INFORMATION AVAILABLE. BUT NO GUARANTEE IS GIVEN THAT ALL EXISTING UTILITIES ARE SHOWN OR THAT THE GIVEN LOCATIONS ARE EXACT. CONFIRMATION OF EXISTENCE AND EXACT LOCATION OF ALL SERVICES MUST BE OBTAINED FROM THE INDIVIDUAL UTILITIES BEFORE PROCEEDING WITH CONSTRUCTION.

NO.	REVISIONS	Y/M/D	BY
0	ISSUED FOR CONSTRUCTION	20/10/16	KLC

AECOM

DESIGNED BY: TJB
CHECKED BY: CCM
DRAWN BY: KLC
APPROVED BY: KWF
HOR. SCALE: 1:250
VERT. SCALE: 1:50
RELEASED FOR CONSTRUCTION
DATE: Oct 16/20

ENGINEERS
GEOSCIENTISTS
MANITOBA

Certificate of Authorization
AECOM Canada Ltd.
No. 4671 Date: Oct 20/20

THE CITY OF WINNIPEG
WATER AND WASTE DEPARTMENT

2020 TRENCHLESS REHABILITATION OF
NON-CIRCULAR COMBINED SEWERS
CONTRACT 2
PLAN / PROFILE
LOGAN AVENUE
LAURA STREET TO ELLEN STREET

SHEET 3 OF 6
CITY DRAWING NUMBER
12594
REV 0

TENDER NO. 459-2020