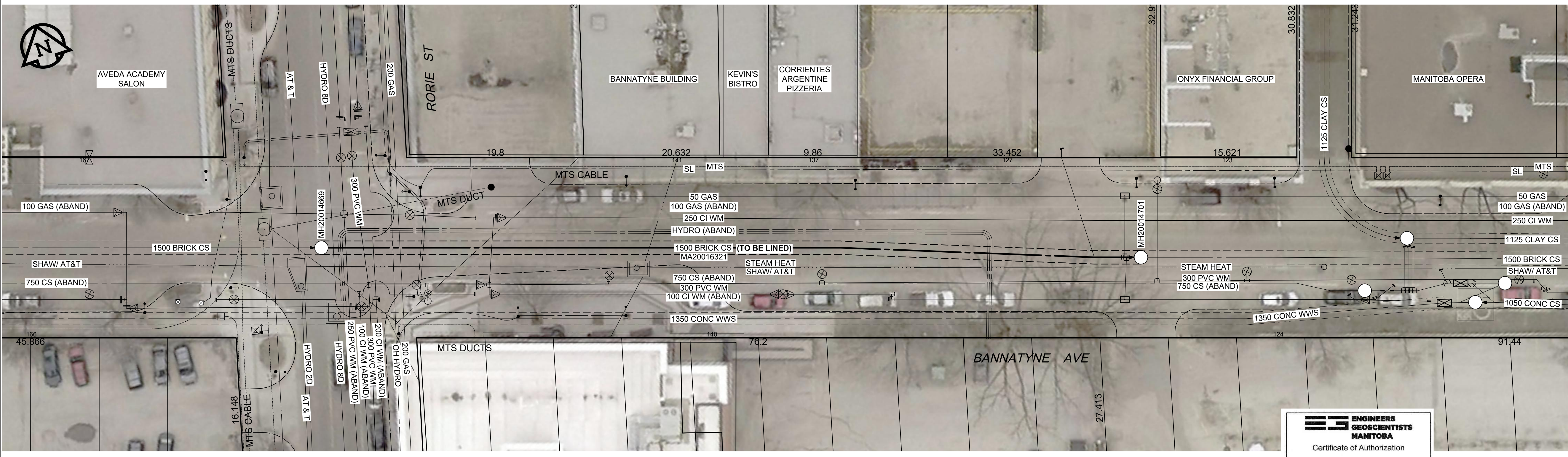
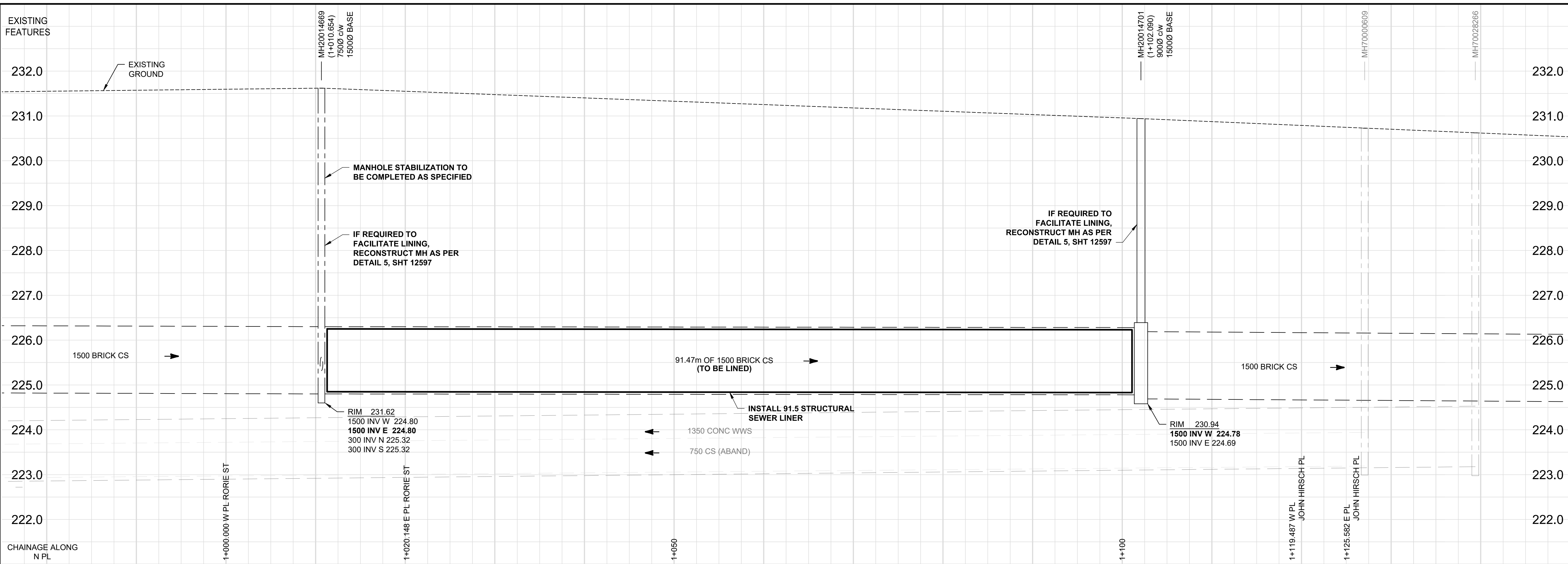


D SIZE 22" x 34" (559mm x 864mm)

PLOT: 10/20/2020 2:11:47 PM

AECOM REVIEW DRFT CHK
AECOM FILE NAME: 60622950-SHT-00-0000-C-1001.dwg. Saved By: ccooperkl



SEWER JUNCTION INFORMATION

SERVICE COUNT	STATION	CLOCK
1	1010.754	9
2	1010.754	3
3	1015.104	2
4	1017.154	3
5	1024.754	3
6	1024.754	2
7	1032.754	3
8	1041.054	3
9	1041.054	9
10	1043.454	12
11	1048.484	9
12	1048.484	3
13	1056.554	3
14	1056.554	9
15	1064.454	3
16	1064.454	9
17	1072.754	3
18	1072.754	9
19	1076.454	11
20	1079.354	3
21	1079.354	9
22	1087.954	3
23	1087.954	9
24	1095.454	9
25	1094.454	3

SEWER REHABILITATION NOTES:

- INSTALL ONE OF THE FOLLOWING REHABILITATION SYSTEMS:
 - CIPP
 - GRP
 - CCPC
- EXISTING SEWER DETERIORATION STATE: PARTIALLY DETERIORATED
- MINIMUM POST LINING DIMENSIONS: 1309mm
- EXTEND REHABILITATION SYSTEM TO THE EDGE OF THE EXISTING MANHOLE OPENINGS AS SHOWN IN DETAIL 2, SHEET 12597
- CIPP, GRP AND CCPC REHABILITATION MAY UTILIZE A PIPE ACCESS SHAFT AT EITHER OF THE EXISTING MANHOLES OR AT A MID POINT.
- SEE PIPELINE CLOSURE AND MANHOLE RECONSTRUCTION DETAILS ON SHEET 12597

GENERAL CONSTRUCTION NOTES:

- RESTORE SITE TO EXISTING CONDITIONS UPON COMPLETION OF WORK
- TRAFFIC CONTROL
 - REGIONAL STREET LANE CLOSURE REQUIRED: NO
 - IMPACTED REGIONAL STREET: N/A
 - BUS ROUTE
 - RESIDENTIAL STREET RESTRICTIONS APPLY

METRIC
WHOLE NUMBERS INDICATE MILLIMETRES
DECIMALIZED NUMBERS INDICATE METRES

EXISTING	LEGEND - PLAN	NEW	EXISTING	LEGEND - PLAN	NEW	EXISTING	LEGEND - PROFILE	NEW
150 WM	WATERMAIN	150 WM	150 WM	WATERMAIN	150 WM	150 WM	WATERMAIN	150 WM
300 LDS	LAND DRAINAGE SEWER	300 LDS	300 LDS	LAND DRAINAGE SEWER	300 LDS	300 LDS	LAND DRAINAGE SEWER	300 LDS
250 WWS	WASTE WATER SEWER	250 WWS	250 WWS	WASTE WATER SEWER	250 WWS	250 WWS	WASTE WATER SEWER	250 WWS
○	MANHOLE	●	○	MANHOLE	●	○	MANHOLE	●
□	CATCH BASIN	■	□	CATCH BASIN	■	□	CATCH BASIN	■
△	CURB INLET	▲	△	CURB INLET	▲	△	CURB INLET	▲
▭	CULVERT	▭	▭	CULVERT	▭	▭	CULVERT	▭
—	PIPE ABANDONMENTS	—	—	PIPE ABANDONMENTS	—	—	PIPE ABANDONMENTS	—
+	SURVEY BAR	+	+	SURVEY BAR	+	+	SURVEY BAR	+
○	HYDRANT	○	○	HYDRANT	○	○	HYDRANT	○
+	VALVE	+	+	VALVE	+	+	VALVE	+
+	ANODE	+	+	ANODE	+	+	ANODE	+
○	MTS	○	○	MTS	○	○	MTS	○
○	GAS	○	○	GAS	○	○	GAS	○
○	TESTHOLE	○	○	TESTHOLE	○	○	TESTHOLE	○
○	LAMP STANDARD	○	○	LAMP STANDARD	○	○	LAMP STANDARD	○
○	TREE	○	○	TREE	○	○	TREE	○

LOCATION APPROVED
UNDERGROUND STRUCTURES
SUPR. U/G STRUCTURES DATE COMMITTEE
NOTE:
LOCATION OF UNDERGROUND STRUCTURES AS SHOWN ARE BASED ON THE BEST INFORMATION AVAILABLE. BUT NO GUARANTEE IS GIVEN THAT ALL EXISTING UTILITIES ARE SHOWN OR THAT THE GIVEN LOCATIONS ARE EXACT. CONFIRMATION OF EXISTENCE AND EXACT LOCATION OF ALL SERVICES MUST BE OBTAINED FROM THE INDIVIDUAL UTILITIES BEFORE PROCEEDING WITH CONSTRUCTION.

NO.	REVISIONS	Y/M/D	BY
0	ISSUED FOR CONSTRUCTION	20/10/16	KLC

AECOM

DESIGNED BY: TJB
CHECKED BY: CCM
DRAWN BY: KLC
APPROVED BY: KWF
HOR. SCALE: 1:250
VERT. SCALE: 1:50
DATE: Oct 16/20

PROFESSIONAL'S SEAL
ENGINEERS
GEOLOGISTS
MANITOBA
Certificate of Authorization
AECOM Canada Ltd.
No. 4671 Date: Oct 20/20

THE CITY OF WINNIPEG
WATER AND WASTE DEPARTMENT

2020 TRENCHLESS REHABILITATION OF
NON-CIRCULAR COMBINED SEWERS
CONTRACT 2
PLAN / PROFILE
BANNATYNE AVENUE
RORIE STREET TO JOHN HIRSCH PLACE

SHEET 1 OF 6
CITY DRAWING NUMBER
12592
REV 0

TENDER NO. 459-2020