

- CONSTRUCTION NOTES**
1. REMOVE EXISTING CURB AND CONSTRUCT NEW BARRIER CURB (SD-206A)
  2. REMOVE EXISTING SIDEWALK AND CONSTRUCT NEW 100mm CONCRETE SIDEWALK (SD-228A)
  3. REMOVE EXISTING PAVEMENT AND CONSTRUCT NEW 200mm REINFORCED CONCRETE PAVEMENT (SD-213A)
  4. CONSTRUCT NEW ASPHALT OVERLAY 80mm (TYP)
  5. REMOVE EXISTING SIDEWALK AND CURB RAMP, INSTALL SOD AND MODIFIED BARRIER CURB (SD-203B)
  6. REMOVE EXISTING CATCH BASIN AND CURB INLET AS PER CW 2130
  7. INSTALL NEW 1800 CATCHBASIN WITH CURB AND GUTTER INLET (SD-024), CONNECT TO EXISTING CB LEAD AS PER CW 2130
  8. INSTALL NEW FRAME AND SOLID COVER (AP-006, AP-007)
  9. REMOVE EXISTING ASPHALT OVERLAY
  10. INSTALL NEW CATCH BASIN LEAD, CONNECT TO EXISTING MANHOLE, AND PLUG EXISTING CATCH BASIN LEAD AS PER CW 2130
  11. RAISE EXISTING HYDRANT AS DIRECTED BY CONTRACT ADMINISTRATOR
  12. REMOVE EXISTING CONCRETE SIDEWALK AND INSTALL SOD
  13. REMOVE EXISTING CATCH BASIN AS PER CW 2130

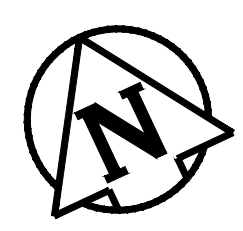
- GENERAL NOTES**
- A. PAVEMENT DIMENSIONS ARE TO BACK OF CURB
  - B. ALL CURB RADI UNDER 15.0m SHALL BE MODIFIED BARRIER (SD-203B)
  - C. PAVEMENT REPAIRS SHOWN ARE ONLY A REPRESENTATIVE SAMPLE OF THE TENDERED QUANTITIES
  - D. ASPHALT TIE-INS ON APPROACHES TO BE DETERMINED IN THE FIELD BY THE CONTRACT ADMINISTRATOR

**WARNING**

IF POWER EQUIPMENT OR EXPLOSIVES ARE TO BE USED FOR EXCAVATION ON THIS PROJECT THE CONTRACTOR MUST:

- 1) OBTAIN CLEARANCE FROM THE GAS UTILITY PRIOR TO EXCAVATION
- 2) TAKE PRECAUTION TO AVOID DAMAGE TO GAS UTILITY INSTALLATIONS.

SEE PROVINCIAL REGULATION 210/72 FOR DETAILS



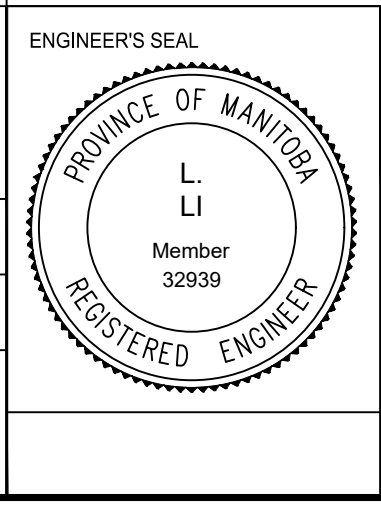
**METRIC**  
WHOLE NUMBERS INDICATE MILLIMETRES  
DECIMALIZED NUMBERS INDICATE METRES

**BID OPPORTUNITY NO. 4-2020**

	HYDRANT						
	VALVE						
	MANHOLE						
	CATCH BASIN						
	CURB INLET						
	HYDRO POLE						
	LIGHT STANDARD						
	FLOW ARROW						
	SURVEY BAR						
	TEST HOLE						
	GEODETIC BENCH MARK						
	EXISTING		PROPOSED		EXISTING		PROPOSED

	WOOD FENCE		
	CHAINLINK FENCE		
	CONCRETE		
	CONCRETE SIDEWALK		
	ASPHALT		
	LEGEND - PLAN		PROPOSED
	NORTH GUTTER		
	CENTER LINE		
	SOUTH GUTTER		
	NORTH SIDEWALK		
	NORTH PROPERTY LINE		
	EXISTING		PROPOSED

B.M. ELEV.	GBM 654524 232.573		
DESIGNED BY	T.K.		
CHECKED BY	C.H.		
DRAWN BY	K.B. & J.W.		
APPROVED BY			
HOR. SCALE:	1 : 250		
VERTICAL:	1 : 10		
DATE	2020/02/19		
NO.	REVISIONS	DATE	BY
2.	ISSUED FOR CONSTRUCTION	14/02/20	J.W.
1.	SUBMIT FOR PLAN APPROVAL	18/12/19	E.H.



**ENGINEERING DIVISION  
TECHNOLOGY SERVICES BRANCH  
106 - 1155 PACIFIC AVE**

**THE CITY OF WINNIPEG  
PUBLIC WORKS DEPARTMENT**

**SELKIRK AVE.**  
FROM BULLER ST. TO SHEPPARD ST.  
ASPHALT OVERLAY AND ASSOCIATED WORKS  
FROM STA. 3+80 TO STA. 5+20

CITY DRAWING NUMBER  
SE-20-37  
SHEET 37 OF 39

**3**