

- CONSTRUCTION NOTES**
- REMOVE EXISTING CURB AND CONSTRUCT NEW BARRIER CURB (SD-206A)
 - REMOVE EXISTING SIDEWALK AND CONSTRUCT NEW 100mm CONCRETE SIDEWALK (SD-228A)
 - REMOVE EXISTING PAVEMENT AND CONSTRUCT NEW 200mm REINFORCED CONCRETE PAVEMENT (SD-213A)
 - CONSTRUCT NEW ASPHALT OVERLAY 80mm (TYP)
 - REMOVE EXISTING SIDEWALK AND CURB RAMP, INSTALL SOD AND MODIFIED BARRIER CURB (SD-203B)
 - REMOVE EXISTING CATCH BASIN AND CURB INLET AS PER CW 2130
 - INSTALL NEW 1800 CATCHBASIN WITH CURB AND GUTTER INLET (SD-024), CONNECT TO EXISTING CB LEAD AS PER CW 2130
 - INSTALL NEW FRAME AND SOLID COVER (AP-006, AP-007)
 - REMOVE EXISTING ASPHALT OVERLAY
 - INSTALL NEW CATCH BASIN LEAD, CONNECT TO EXISTING MANHOLE, AND PLUG EXISTING CATCH BASIN LEAD AS PER CW 2130
 - RAISE EXISTING HYDRANT AS DIRECTED BY CONTRACT ADMINISTRATOR
 - REMOVE EXISTING CONCRETE SIDEWALK AND INSTALL SOD
 - REMOVE EXISTING CATCH BASIN AS PER CW 2130

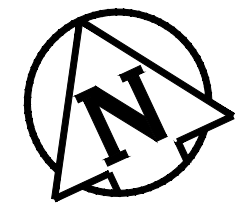
- GENERAL NOTES**
- PAVEMENT DIMENSIONS ARE TO BACK OF CURB
 - ALL CURB RADII UNDER 15.0m SHALL BE MODIFIED BARRIER (SD-203B)
 - PAVEMENT REPAIRS SHOWN ARE ONLY A REPRESENTATIVE SAMPLE OF THE TENDERED QUANTITIES
 - ASPHALT TIE-INS ON APPROACHES TO BE DETERMINED IN THE FIELD BY THE CONTRACT ADMINISTRATOR

WARNING

IF POWER EQUIPMENT OR EXPLOSIVES ARE TO BE USED FOR EXCAVATION ON THIS PROJECT THE CONTRACTOR MUST:

- 1) OBTAIN CLEARANCE FROM THE GAS UTILITY PRIOR TO EXCAVATION
- 2) TAKE PRECAUTION TO AVOID DAMAGE TO GAS UTILITY INSTALLATIONS.

SEE PROVINCIAL REGULATION 210/72 FOR DETAILS



METRIC
WHOLE NUMBERS INDICATE MILLIMETRES
DECIMALIZED NUMBERS INDICATE METRES

BID OPPORTUNITY NO. 4-2020

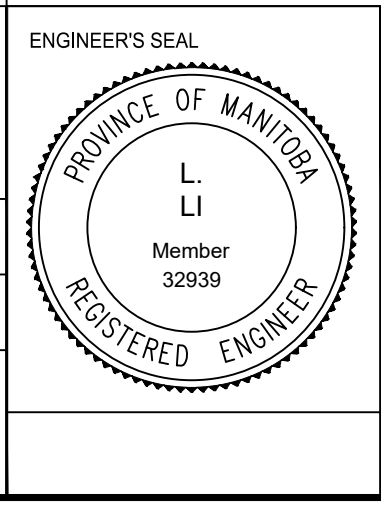
EXISTING	LEGEND - PLAN	PROPOSED	EXISTING	LEGEND - PLAN	PROPOSED	EXISTING	LEGEND - PROFILE	PROPOSED
	HYDRANT			LDS/WWS			WOOD FENCE	
	VALVE			WATERMAIN			CHAINLINK FENCE	
	MANHOLE			GAS			CONCRETE	
	CATCH BASIN			TRAFFIC SIGNALS			CONCRETE SIDEWALK	
	CURB INLET			HYDRO/STREET LIGHT			ASPHALT	
	HYDRO POLE			MTS / TELUS / SHAW			EXISTING	
	LIGHT STANDARD			CURB RENEWAL			LEGEND - PLAN	
	FLOW ARROW			PROPERTY LINE			LEGEND - PROFILE	
	SURVEY BAR			RAMP CURB			NORTH GUTTER	
	TEST HOLE			ELEVATIONS			CENTER LINE	
	GEODETIC BENCH MARK			TREES			SOUTH GUTTER	
	LEGEND - PLAN			LEGEND - PLAN			NORTH SIDEWALK	
	LEGEND - PLAN			LEGEND - PLAN			NORTH PROPERTY LINE	

LOCATION APPROVED UNDERGROUND STRUCTURES

NO.	REVISIONS	DATE	BY
2.	ISSUED FOR CONSTRUCTION	14/02/20	J.W.
1.	SUBMIT FOR PLAN APPROVAL	18/12/19	E.H.
NO.	REVISIONS	DATE	BY

NOTE:
LOCATION OF UNDERGROUND STRUCTURES AS SHOWN ARE BASED ON THE BEST INFORMATION AVAILABLE. BUT NO GUARANTEE IS GIVEN THAT ALL EXISTING UTILITIES ARE SHOWN OR THAT THE GIVEN LOCATIONS ARE EXACT. CONFIRMATION OF EXISTENCE AND EXACT LOCATION OF ALL SERVICES MUST BE OBTAINED FROM THE INDIVIDUAL UTILITIES BEFORE PROCEEDING WITH CONSTRUCTION.

B.M. ELEV.	GBM 654524 232.573
DESIGNED BY	T.K.
CHECKED BY	C.H.
DRAWN BY	K.B. & J.W.
APPROVED BY	
HOR. SCALE	1 : 250
VERTICAL	1 : 10
DATE	2020/02/19



**ENGINEERING DIVISION
TECHNOLOGY SERVICES BRANCH
106 - 1155 PACIFIC AVE**

**THE CITY OF WINNIPEG
PUBLIC WORKS DEPARTMENT**

SELKIRK AVE.
FROM BULLER ST. TO SHEPPARD ST.
ASPHALT OVERLAY AND ASSOCIATED WORKS
FROM STA. 2+20 TO STA. 3+80

CITY DRAWING NUMBER
SE-20-36
SHEET 36 OF 39

2