

- CONSTRUCTION NOTES**
- SUPPLY & INSTALL DETECTABLE WARNING TILES AT ALL CURB RAMP AS PER CW 3328
 - REMOVE EXISTING PAVEMENT AND CONSTRUCT NEW 150mm REINFORCED CONCRETE PAVEMENT
 - REMOVE EXISTING APPROACH AND CONSTRUCT NEW 150mm REINFORCED CONCRETE APPROACH
 - REMOVE AND REPLACE BARRIER CURB 125mm REVEAL (SD-206A)
 - REMOVE EXISTING BARRIER CURB AND CONSTRUCT NEW MODIFIED BARRIER CURB (SD-203B)
 - REMOVE EXISTING SIDEWALK AND CONSTRUCT NEW 100mm CONCRETE SIDEWALK (SD-228A)
 - REMOVE EXISTING ASPHALT PAVEMENT
 - REPLACE CONCRETE RISERS 0.0m TO 0.3m, INSTALL NEW STANDARD FRAME (AP-006) AND STANDARD GRATED COVER (AP-008)
 - CONSTRUCT NEW ASPHALT OVERLAY 80mm (TYP)
 - REMOVE EXISTING SIDEWALK AND INSTALL SOD

- GENERAL NOTES**
- PAVEMENT DIMENSIONS ARE TO BACK OF CURB
 - ALL CURB RADII UNDER 15.0m SHALL BE MODIFIED BARRIER (SD-203B)
 - CURB REPLACEMENT AS DIRECTED BY CONTRACT ADMINISTRATOR
 - PAVEMENT REPAIRS SHOWN ARE ONLY A REPRESENTATIVE SAMPLE OF THE TENDER QUANTITIES
 - ASPHALT TIE-INS ON APPROACHES TO BE DETERMINED IN FIELD BY THE CONTRACT ADMINISTRATOR

WARNING

IF POWER EQUIPMENT OR EXPLOSIVES ARE TO BE USED FOR EXCAVATION ON THIS PROJECT THE CONTRACTOR MUST:

- OBTAIN CLEARANCE FROM THE GAS UTILITY PRIOR TO EXCAVATION.
- TAKE PRECAUTION TO AVOID DAMAGE TO GAS UTILITY INSTALLATIONS.

SEE PROVINCIAL REGULATION 210/72 FOR DETAILS

METRIC
WHOLE NUMBERS INDICATE MILLIMETERS
DECIMALIZED NUMBERS INDICATE METERS

BID OPPORTUNITY NO. 4-2020

| EXISTING | LEGEND - PLAN | PROPOSED | EXISTING | LEGEND - PLAN | PROPOSED | EXISTING | LEGEND - PROFILE | PROPOSED |
|----------|----------------|-----------|----------|--------------------|----------|----------|---------------------|----------|
| ⊕ | HYDRANT | ⊕ | --- | LDS/WWS | --- | --- | CONCRETE | --- |
| ⊗ | VALVE | ⊗ | --- | WATERMAIN | --- | --- | CONCRETE SIDEWALK | --- |
| ⊙ | CURB STOP | ⊙ | --- | GAS | --- | --- | ASPHALT | --- |
| ○ | MANHOLE | ● | --- | TRAFFIC SIGNALS | --- | --- | LEGEND - PLAN | --- |
| □ | CATCH BASIN | ⊠ | --- | HYDRO/STREET LIGHT | --- | --- | NORTH PROPERTY LINE | --- |
| △ | CURB INLET | ▲ | --- | MTS / TELUS / SHAW | --- | --- | SOUTH PROPERTY LINE | --- |
| ○ | HYDRO POLE | ● | --- | CURB RENEWAL | --- | --- | WEST SIDEWALK | --- |
| ○ | LIGHT STANDARD | ● | --- | PROPERTY LINE | --- | --- | EAST SIDEWALK | --- |
| → | FLOW ARROW | → | --- | RAMP CURB | --- | --- | WEST GUTTER | --- |
| + | SURVEY BAR | + | --- | WOOD FENCE | --- | --- | CENTER LINE | --- |
| 231.000 | ELEVATIONS | (231.000) | --- | CONCRETE FENCE | --- | --- | EAST GUTTER | --- |

LOCATION APPROVED UNDERGROUND STRUCTURES

SUPR. U/G STRUCTURES COMMITTEE DATE

NOTE: LOCATION OF UNDERGROUND STRUCTURES AS SHOWN ARE BASED ON THE BEST INFORMATION AVAILABLE BUT NO GUARANTEE IS GIVEN THAT ALL EXISTING UTILITIES ARE SHOWN OR THAT THE GIVEN LOCATIONS ARE EXACT. CONFIRMATION OF EXISTENCE AND EXACT LOCATION OF ALL SERVICES MUST BE OBTAINED FROM THE INDIVIDUAL UTILITIES BEFORE PROCEEDING WITH CONSTRUCTION.

B.M. ELEV. IRON PROPERTY BAR S.E. CORNER PARTRIDGE @ POWERS - 231.125

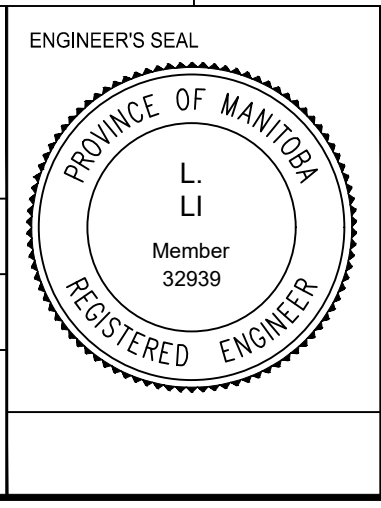
ENGINEERING DIVISION
TECHNOLOGY SERVICES BRANCH
106 - 1155 PACIFIC AVE

DESIGNED BY K.B. CHECKED BY E.H.

DRAWN BY K.B. APPROVED BY

HOR. SCALE: 1 : 250
VERTICAL: 1 : 10

DATE 2020/02/20



THE CITY OF WINNIPEG
PUBLIC WORKS DEPARTMENT

POWERS ST.
FROM PARTRIDGE AVE. TO LEILA AVE.
ASPHALT OVERLAY AND ASSOCIATED WORKS
FROM STA. 1+00 TO STA. 1+91

CITY DRAWING NUMBER SE-20-34
SHEET 34 OF 39

1