

**CONSTRUCTION NOTES**

- LIMIT OF ASPHALT OVERLAY
- CONSTRUCT NEW ASPHALT OVERLAY
- REMOVE EXISTING ASPHALT PAVEMENT
- REMOVE EXISTING SIDEWALK AND CONSTRUCT NEW 100mm CONCRETE SIDEWALK (SD-228A)
- REMOVE EXISTING CONCRETE AND CONSTRUCT NEW 150mm REINFORCED CONCRETE APPROACH (SD-236)
- REMOVE EXISTING LIP CURB AND CONSTRUCT NEW BARRIER CURB (SD-203A)
- INSTALL NEW MANHOLE/CATCH BASIN FRAME AND COVER
- INSTALL NEW BARRIER CURB AND GUTTER INLET FRAME (SD-023)
- REMOVE EXISTING CATCH PIT AND INSTALL NEW CATCH PIT WITH BARRIER CURB AND GUTTER INLET (SD-023), AND CONNECT TO EXISTING DRAINAGE PIPE AS PER CW 2130
- REGRADE EXISTING PATIO BLOCKS
- MILL JOINT TO DEPTH SPECIFIED BY CONTRACT ADMINISTRATOR AND PATCH WITH ASPHALT AS PER SPECIFICATION E11
- REMOVE & REPLACE EXISTING CONCRETE WITH NEW 150mm REINFORCED CONCRETE PAVEMENT
- REMOVE EXISTING CATCH BASIN AND INSTALL NEW 1200 CATCH BASIN WITH CURB AND GUTTER INLET (SD-024), AND CONNECT TO EXISTING CB LEAD AS PER CW 2130

**GENERAL NOTES**

- PAVEMENT DIMENSIONS ARE TO BACK OF CURB
- ALL CURB RADII UNDER 15.0m SHALL BE MODIFIED
- ADD 200.00mm TO ALL DESIGN ELEVATION TO OBTAIN GEODETIC ELEVATIONS
- CURB REPLACEMENT AS DIRECTED BY CONTRACT ADMINISTRATOR
- INSTALL DETECTABLE WARNING SURFACE TILES AT CURB RAMPS AS PER CW3326
- ASPHALT TIE-INS ON APPROACHES TO BE DETERMINED IN THE FIELD BY THE CONTRACT ADMINISTRATOR
- PAVEMENT REPAIRS SHOWN ARE ONLY A REPRESENTATIVE SAMPLE OF THE TENDER QUANTITIES

**METRIC**

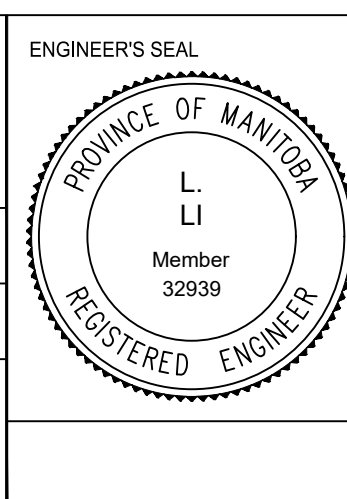
WHOLE NUMBERS INDICATE MILLIMETERS  
DECIMALIZED NUMBERS INDICATE METERS

BID OPPORTUNITY NO. 4-2020

⊕	HYDRANT	◆	---	LDS/WWS	---	CONCRETE	---
⊗	VALVE	◆	---	WATERMAIN	---	CONCRETE SIDEWALK	---
⊙	CURB STOP	●	---	GAS	---	ASPHALT	---
○	MANHOLE	●	---	TRAFFIC SIGNALS	---	PARTIAL DEPTH	---
□	CATCH BASIN	●	---	HYDRO/STREET LIGHT	---	LEGEND - PLAN	PROPOSED
△	CURB INLET	▲	---	MTS/SHAW	---	LEGEND - PROFILE	PROPOSED
○	HYDRO POLE	●	---	CURB RENEWAL	---	NORTH GUTTER	---
○	LIGHT STANDARD	●	---	PROPERTY LINE	---	CENTER LINE	---
○	TRAFFIC SIGNAL POLE	●	---	RAMP CURB	---	SOUTH GUTTER	---
+	SURVEY BAR	+	---	ELEVATIONS	(31.000)	NORTH SIDEWALK	---
⊕	GEODETIC BENCH MARK	⊕	---	TREE	---	SOUTH SIDEWALK	---
---	EXISTING	---	---	---	---	---	---
---	LEGEND - PLAN	---	---	---	---	---	---
---	PROPOSED	---	---	---	---	---	---

LOCATION APPROVED		B.M. ELEV.	IB @ NW CORNER 290 MAPLEGLN DR	
UNDERGROUND STRUCTURES			231.380	
SUPR. LTD STRUCTURES COMMITTEE	DATE			
NOTE: LOCATION OF UNDERGROUND STRUCTURES AS SHOWN ARE BASED ON THE BEST INFORMATION AVAILABLE, BUT NO GUARANTEE IS GIVEN THAT ALL EXISTING UTILITIES ARE SHOWN OR THAT THE GIVEN LOCATIONS ARE EXACT. CONFIRMATION OF EXISTENCE AND EXACT LOCATION OF ALL SERVICES MUST BE OBTAINED FROM THE INDIVIDUAL UTILITIES BEFORE PROCEEDING WITH CONSTRUCTION.				
NO.	REVISIONS	DATE	BY	
2.	ISSUED FOR CONSTRUCTION	14/02/20	J.W.	
1.	SUBMIT FOR PLAN APPROVAL	18/12/19	J.W.	

ENGINEERING DIVISION TECHNOLOGY SERVICES BRANCH 106 - 1155 PACIFIC AVE			
DESIGNED BY	J.W.	CHECKED BY	C.H.
DRAWN BY	J.W.	APPROVED BY	
HOR. SCALE:	1 : 250	DATE	2020/02/19
VERTICAL:	1 : 10		



**THE CITY OF WINNIPEG**  
PUBLIC WORKS DEPARTMENT

**MARLOW CRT**

FROM MAPLEGLN DR TO MAPLEGLN DR  
ASPHALT OVERLAY AND ASSOCIATED WORKS

FROM STA. 3+30 TO STA. 4+50

CITY DRAWING NUMBER SE-20-30  
SHEET 30 OF 39

3