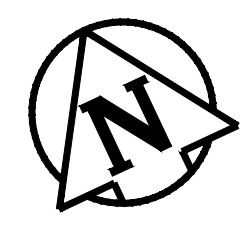
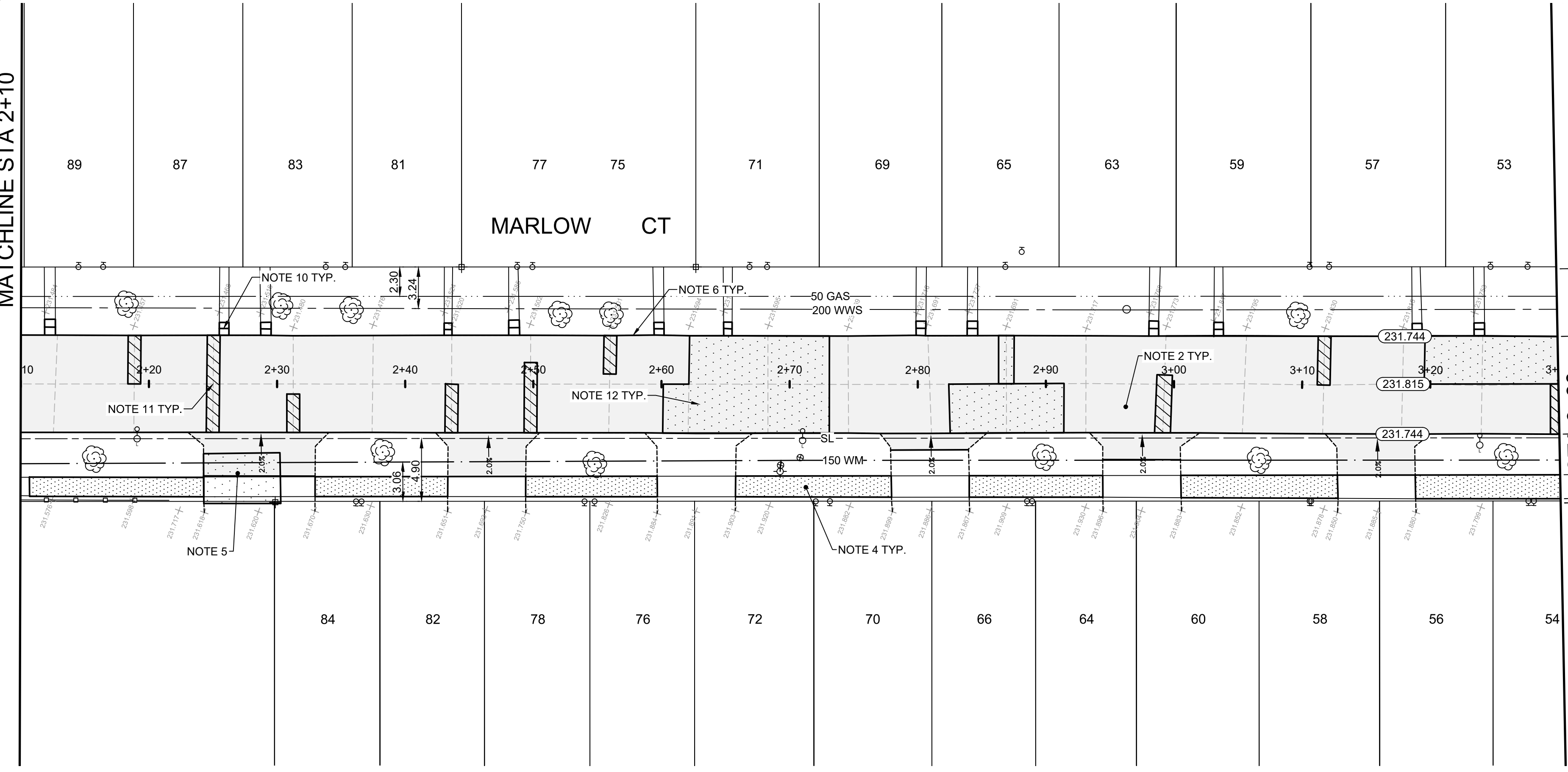


MATCHLINE STA 2+10

MATCHLINE STA 3+30



CONSTRUCTION NOTES

1. LIMIT OF ASPHALT OVERLAY
2. CONSTRUCT NEW ASPHALT OVERLAY
3. REMOVE EXISTING ASPHALT PAVEMENT
4. REMOVE EXISTING SIDEWALK AND CONSTRUCT NEW 100mm CONCRETE SIDEWALK (SD-228A)
5. REMOVE EXISTING CONCRETE AND CONSTRUCT NEW 150mm REINFORCED CONCRETE APPROACH (SD-236)
6. REMOVE EXISTING LIP CURB AND CONSTRUCT NEW BARRIER CURB (SD-203A)
7. INSTALL NEW MANHOLE/CATCH BASIN FRAME AND COVER
8. INSTALL NEW BARRIER CURB AND GUTTER INLET FRAME (SD-023)
9. REMOVE EXISTING CATCH PIT AND INSTALL NEW CATCH PIT WITH BARRIER CURB AND GUTTER INLET (SD-023), AND CONNECT TO EXISTING DRAINAGE PIPE AS PER CW 2130
10. REGRADE EXISTING PATIO BLOCKS
11. MILL JOINT TO DEPTH SPECIFIED BY CONTRACT ADMINISTRATOR AND PATCH WITH ASPHALT AS PER SPECIFICATION E11
12. REMOVE & REPLACE EXISTING CONCRETE WITH NEW 150mm REINFORCED CONCRETE PAVEMENT
13. REMOVE EXISTING CATCH BASIN AND INSTALL NEW 1200 CATCH BASIN WITH CURB AND GUTTER INLET (SD-024), AND CONNECT TO EXISTING CB LEAD AS PER CW 2130

GENERAL NOTES

- A. PAVEMENT DIMENSIONS ARE TO BACK OF CURB
- B. ALL CURB RADII UNDER 15.0m SHALL BE MODIFIED
- C. ADD 200.000m TO ALL DESIGN ELEVATION TO OBTAIN GEODETIC ELEVATIONS
- D. CURB REPLACEMENT AS DIRECTED BY CONTRACT ADMINISTRATOR
- E. INSTALL DETECTABLE WARNING SURFACE TILES AT CURB RAMPS AS PER CW3326
- F. ASPHALT TIE-INS ON APPROACHES TO BE DETERMINED IN THE FIELD BY THE CONTRACT ADMINISTRATOR
- G. PAVEMENT REPAIRS SHOWN ARE ONLY A REPRESENTATIVE SAMPLE OF THE TENDER QUANTITIES

METRIC

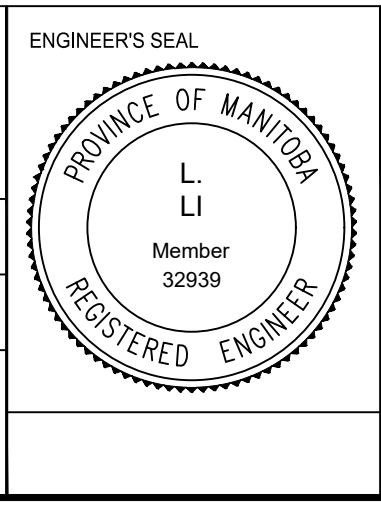
WHOLE NUMBERS INDICATE MILLIMETERS
DECIMALIZED NUMBERS INDICATE METERS

BID OPPORTUNITY NO. 4-2020

	HYDRANT							
	VALVE							
	CURB STOP							
	MANHOLE							
	CATCH BASIN							
	CURB INLET							
	HYDRO POLE							
	LIGHT STANDARD							
	TRAFFIC SIGNAL POLE							
	SURVEY BAR							
	GEODETIC BENCH MARK							
	EXISTING LDS/WWS							
	EXISTING WATERMAIN							
	EXISTING GAS							
	EXISTING TRAFFIC SIGNALS							
	EXISTING HYDRO/STREET LIGHT							
	EXISTING MTS/SHAW							
	EXISTING CURB RENEWAL							
	EXISTING PROPERTY LINE							
	EXISTING RAMP CURB							
	EXISTING ELEVATIONS							
	EXISTING TREE							
	EXISTING CONCRETE							
	EXISTING CONCRETE SIDEWALK							
	EXISTING ASPHALT							
	EXISTING PARTIAL DEPTH							
	EXISTING LEGEND - PLAN							
	EXISTING LEGEND - PROFILE							

B.M. ELEV. 231.380		IB @ NW CORNER 290 MAPLEGLN DR	
DESIGNED BY J.W.		CHECKED BY C.H.	
DRAWN BY J.W.		APPROVED BY	
2.	ISSUED FOR CONSTRUCTION	14/02/20	J.W.
1.	SUBMIT FOR PLAN APPROVAL	18/12/19	J.W.
NO.	REVISIONS	DATE	BY

ENGINEERING DIVISION
TECHNOLOGY SERVICES BRANCH
106 - 1155 PACIFIC AVE



THE CITY OF WINNIPEG
PUBLIC WORKS DEPARTMENT

MARLOW CRT
FROM MAPLEGLN DR TO MAPLEGLN DR
ASPHALT OVERLAY AND ASSOCIATED WORKS
FROM STA. 2+10 TO STA. 3+30

CITY DRAWING NUMBER SE-20-29
SHEET 29 OF 39
2