

CONSTRUCTION NOTES

- LIMIT OF ASPHALT OVERLAY
- CONSTRUCT NEW ASPHALT OVERLAY
- REMOVE EXISTING SIDEWALK AND CONSTRUCT NEW 100mm CONCRETE SIDEWALK (SD-228A)
- REMOVE EXISTING LIP CURB AND CONSTRUCT NEW BARRIER CURB (SD-205)
- ADJUST MANHOLE/CATCH BASIN FRAME
- REMOVE EXISTING CATCH PIT AND INSTALL NEW CATCH PIT WITH CURB & GUTTER INLET FRAME (SD-023), AND CONNECT TO EXISTING CATCH BASIN (CW 2130)
- REMOVE AND REPLACE 1800mm CATCH BASIN WITH BARRIER CURB AND GUTTER INLET FRAME (SD-023), AND CONNECT TO EXISTING CATCH BASIN LEAD (CW 2130)
- REMOVE EXISTING CATCH BASIN AND INSTALL NEW CATCH PIT WITH CURB & GUTTER INLET FRAME (SD-023), AND CONNECT TO EXISTING CATCH BASIN (CW 2130)
- REMOVE AND REPLACE CATCH PIT WITH BARRIER CURB & GUTTER INLET FRAME (SD-023), AND CONNECT TO EXISTING DRAINAGE PIPE (CW 2130)
- REMOVE EXISTING CONCRETE AND CONSTRUCT NEW 150mm REINFORCED CONCRETE APPROACH (SD-236)
- REPLACE MANHOLE RISER 0.0m - 0.3m
- REMOVE EXISTING SIDEWALK AND INSTALL SOD

GENERAL NOTES

- PAVEMENT DIMENSIONS ARE TO BACK OF CURB
- ALL CURB RADII UNDER 15.0m SHALL BE MODIFIED BARRIER (SD-203B)
- ADD 200.000m TO ALL DESIGN ELEVATION TO OBTAIN GEODETIC ELEVATIONS
- CURB REPLACEMENT AS DIRECTED BY CONTRACT ADMINISTRATOR
- ASPHALT TIE-INS ON APPROACHES TO BE DETERMINED IN THE FIELD BY THE CONTRACT ADMINISTRATOR
- PAVEMENT REPAIRS SHOWN ARE ONLY A REPRESENTATIVE SAMPLE OF THE TENDER QUANTITIES

METRIC
WHOLE NUMBERS INDICATE MILLIMETERS
DECIMALIZED NUMBERS INDICATE METERS
BID OPPORTUNITY NO. 4-2020

SYMBOL	DESCRIPTION	SYMBOL	DESCRIPTION	SYMBOL	DESCRIPTION	SYMBOL	DESCRIPTION
⊕	HYDRANT	◆	LDS/WWS	---	CONCRETE	---	LOCATION APPROVED
⊗	VALVE	●	WATERMAIN	---	CONCRETE SIDEWALK	---	UNDERGROUND STRUCTURES
⊙	CURB STOP	○	GAS	---	ASPHALT	---	
⊚	MANHOLE	●	TRAFFIC SIGNALS	---	PARTIAL DEPTH	---	
⊠	CATCH BASIN	□	HYDRO/STREET LIGHT	---	LEGEND - PLAN	---	
△	CURB INLET	▲	MTS/SHAW	---	PROPOSED	---	
⊕	HYDRO POLE	●	CURB RENEWAL	---	NORTH GUTTER	---	
⊕	LIGHT STANDARD	●	PROPERTY LINE	---	CENTER LINE	---	
⊕	TRAFFIC SIGNAL POLE	●	RAMP CURB	---	SOUTH GUTTER	---	
⊕	SURVEY BAR	◆	ELEVATIONS	---	NORTH SIDEWALK	---	
⊕	GEODETIC BENCH MARK	⊕	TREE	---	SOUTH SIDEWALK	---	
---	EXISTING	---	LEGEND - PLAN	---	PROPOSED	---	

LOCATION APPROVED
DATE

NOTE:
LOCATION OF UNDERGROUND STRUCTURES AS SHOWN ARE BASED ON THE BEST INFORMATION AVAILABLE. BUT NO GUARANTEE IS GIVEN THAT ALL EXISTING UTILITIES ARE SHOWN OR THAT THE GIVEN LOCATIONS ARE EXACT. CONFIRMATION OF EXISTENCE AND EXACT LOCATION OF ALL SERVICES MUST BE OBTAINED FROM THE INDIVIDUAL UTILITIES BEFORE PROCEEDING WITH CONSTRUCTION.

NO.	REVISIONS	DATE	BY
2.	ISSUED FOR CONSTRUCTION	14/02/20	J.W.
1.	SUBMIT FOR PLAN APPROVAL	20/12/19	J.W.

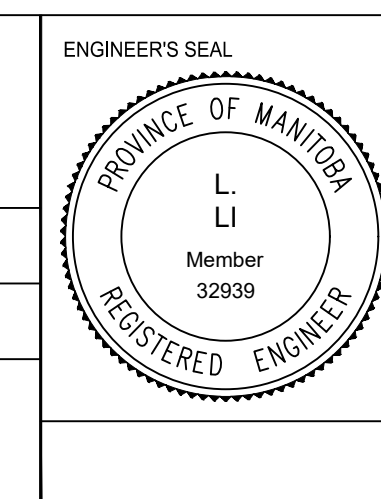
B.M. ELEV. IB @ NE CORNER 82 MAGENTA CR 231.627

ENGINEERING DIVISION
TECHNOLOGY SERVICES BRANCH
106 - 1155 PACIFIC AVE

DESIGNED BY	CHECKED BY
J.W.	C.H.

DRAWN BY	APPROVED BY
J.W.	

HOR. SCALE: 1 : 250
VERTICAL: 1 : 10
DATE: 2020/02/21



THE CITY OF WINNIPEG
PUBLIC WORKS DEPARTMENT

MALDEN CS
FROM MANNERLEY WAY TO MANNERLEY WAY
ASPHALT OVERLAY AND ASSOCIATED WORKS
FROM STA. 3+80 TO STA. 4+60

CITY DRAWING NUMBER SE-20-27
SHEET 27 OF 39
4