

- CONSTRUCTION NOTES**
1. REMOVE EXISTING PAVEMENT AND CONSTRUCT NEW 150mm REINFORCED CONCRETE PAVEMENT
 2. CONSTRUCT NEW ASPHALT OVERLAY
 3. REMOVE EXISTING ASPHALT OVERLAY
 4. REGRADE EXISTING PATIO BLOCKS
 5. INSTALL NEW MOUNTABLE CURB AND GUTTER PAVING COVER (AP-017)
 6. REGRADE EXISTING PAVING STONES
 7. ADJUST MANHOLE AND NEW FRAME AND COVER (AP-006, AP-007)
 8. INSTALL NEW CURB AND GUTTER INLET FRAME AND COVER (AP-011, AP-012)
 9. MILL JOINT TO DEPTH SPECIFIED BY CONTRACT ADMINISTRATOR AND PATCH WITH ASPHALT AS PER SPECIFICATION E11
 10. INSTALL NEW MOUNTABLE CURB AND GUTTER FRAME AND COVER (AP-015, AP-016)
 11. REMOVE EXISTING CATCH PIT AND INSTALL NEW 1800mm CATCH BASIN (SD-024) CONNECT TO EXISTING LAND DRAINAGE SEWER AS PER CW 2130. ABANDON EXISTING CATCH PIT DRAINAGE PIPE

- GENERAL NOTES**
- A. PAVEMENT DIMENSIONS ARE TO BACK OF CURB
 - B. ALL CURB RADII UNDER 15.0m SHALL BE MODIFIED BARRIER (SD-203B)
 - C. ADD 200.000m TO ALL DESIGN ELEVATION TO OBTAIN GEODETIC ELEVATIONS
 - D. CURB REPLACEMENT AS DIRECTED BY CONTRACT ADMINISTRATOR
 - E. ASPHALT TIE-INS ON APPROACHES TO BE DETERMINED IN THE FIELD BY CONTRACT ADMINISTRATOR
 - F. PAVEMENT REPAIRS SHOWN ARE ONLY A REPRESENTATIVE SAMPLE OF TENDER QUANTITIES

METRIC
WHOLE NUMBERS INDICATE MILLIMETERS
DECIMALIZED NUMBERS INDICATE METERS
BID OPPORTUNITY NO. 4-2020

	HYDRANT			LDS/WWS			CONCRETE	
	VALVE			WATERMAIN			CONCRETE SIDEWALK	
	CURB STOP			GAS			ASPHALT	
	MANHOLE			TRAFFIC SIGNALS			BRICK	
	CATCH BASIN			HYDRO/STREET LIGHT			PARTIAL DEPTH	
	CURB INLET			MTS/SHAW			EXISTING	
	HYDRO POLE			PROPERTY LINE			WEST GUTTER	
	LIGHT STANDARD			RAMP CURB			CENTER LINE	
	TRAFFIC SIGNAL POLE			ELEVATIONS			EAST GUTTER	
	SURVEY BAR			TREE			WEST SIDEWALK	
	GEODETIC BENCH MARK						EAST SIDEWALK	
	EXISTING			LEGEND - PLAN			LEGEND - PROFILE	

LOCATION APPROVED UNDERGROUND STRUCTURES

IB @ NW CORNER OF 282 GARTON AVE
232.534

DESIGNED BY J.W.
CHECKED BY C.H.

DRAWN BY J.W.
APPROVED BY

DATE 2020/02/18

REVISIONS

2. ISSUED FOR CONSTRUCTION 14/02/20 J.W.

1. SUBMIT FOR PLAN APPROVAL 09/12/19 J.W.

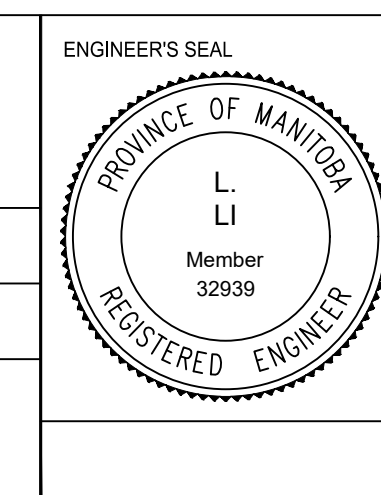
ENGINEERING DIVISION
TECHNOLOGY SERVICES BRANCH
106 - 1155 PACIFIC AVE

DESIGNED BY J.W.
CHECKED BY C.H.

DRAWN BY J.W.
APPROVED BY

DATE 2020/02/18

HOR. SCALE: 1 : 250
VERTICAL: 1 : 10



THE CITY OF WINNIPEG
PUBLIC WORKS DEPARTMENT

FOREST COVE DR
FROM GARTON AVE TO JONATHAN CRES
ASPHALT OVERLAY AND ASSOCIATED WORKS
FROM STA. 5+20 TO STA. 6+00

CITY DRAWING NUMBER SE-20-22
SHEET 22 OF 39
5