

- CONSTRUCTION NOTES**
1. REMOVE EXISTING PAVEMENT AND CONSTRUCT NEW 150mm REINFORCED CONCRETE PAVEMENT
 2. CONSTRUCT NEW ASPHALT OVERLAY
 3. REMOVE EXISTING ASPHALT OVERLAY
 4. REGRADE EXISTING PATIO BLOCKS
 5. INSTALL NEW MOUNTABLE CURB AND GUTTER PAVING COVER (AP-017)
 6. REGRADE EXISTING PAVING STONES
 7. ADJUST MANHOLE AND NEW FRAME AND COVER (AP-006, AP-007)
 8. INSTALL NEW CURB AND GUTTER INLET FRAME AND COVER (AP-011, AP-012)
 9. MILL JOINT TO DEPTH SPECIFIED BY CONTRACT ADMINISTRATOR AND PATCH WITH ASPHALT AS PER SPECIFICATION E11
 10. INSTALL NEW MOUNTABLE CURB AND GUTTER FRAME AND COVER (AP-015, AP-016)
 11. REMOVE EXISTING CATCH PIT AND INSTALL NEW 1800mm CATCH BASIN (SD-024) CONNECT TO EXISTING LAND DRAINAGE SEWER AS PER CW 2130. ABANDON EXISTING CATCH PIT DRAINAGE PIPE

- GENERAL NOTES**
- A. PAVEMENT DIMENSIONS ARE TO BACK OF CURB
 - B. ALL CURB RADII UNDER 15.0m SHALL BE MODIFIED BARRIER (SD-203B)
 - C. ADD 200.00mm TO ALL DESIGN ELEVATION TO OBTAIN GEODETIC ELEVATIONS
 - D. CURB REPLACEMENT AS DIRECTED BY CONTRACT ADMINISTRATOR
 - E. ASPHALT TIE-INS ON APPROACHES TO BE DETERMINED IN THE FIELD BY CONTRACT ADMINISTRATOR
 - F. PAVEMENT REPAIRS SHOWN ARE ONLY A REPRESENTATIVE SAMPLE OF TENDER QUANTITIES

METRIC
WHOLE NUMBERS INDICATE MILLIMETERS
DECIMALIZED NUMBERS INDICATE METERS

BID OPPORTUNITY NO. 4-2020

⊕	HYDRANT	◆	---	LDS/WWS	---	CONCRETE	---
⊗	VALVE	◆	---	WATERMAIN	---	CONCRETE SIDEWALK	---
○	CURB STOP	●	---	GAS	---	ASPHALT	---
○	MANHOLE	●	---	TRAFFIC SIGNALS	---	BRICK	---
□	CATCH BASIN	●	---	HYDRO/STREET LIGHT	---	PARTIAL DEPTH	---
△	CURB INLET	▲	---	MTS/SHAW	---	LEGEND - PLAN	---
○	HYDRO POLE	●	---	CURB RENEWAL	---	EXISTING	---
○	LIGHT STANDARD	●	---	PROPERTY LINE	---	PROPOSED	---
○	TRAFFIC SIGNAL POLE	●	---	RAMP CURB	---	LEGEND - PROFILE	---
+	SURVEY BAR	+	---	ELEVATIONS	(31.000)	---	---
⊕	GEODETIC BENCH MARK	⊕	---	TREE	---	---	---
---	EXISTING	---	---	---	---	---	---
---	LEGEND - PLAN	---	---	---	---	---	---

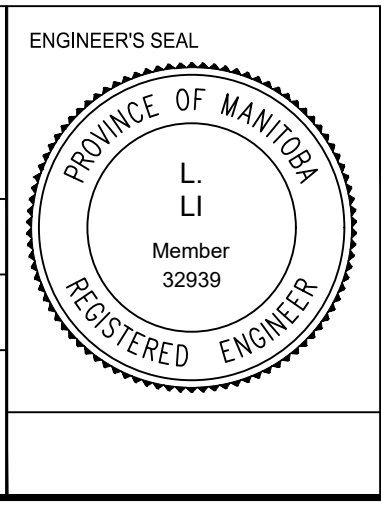
LOCATION APPROVED UNDERGROUND STRUCTURES

DATE: _____

NOTE:
LOCATION OF UNDERGROUND STRUCTURES AS SHOWN ARE BASED ON THE BEST INFORMATION AVAILABLE. BUT NO GUARANTEE IS GIVEN THAT ALL EXISTING UTILITIES ARE SHOWN OR THAT THE GIVEN LOCATIONS ARE EXACT. CONFIRMATION OF EXISTENCE AND EXACT LOCATION OF ALL SERVICES MUST BE OBTAINED FROM THE INDIVIDUAL UTILITIES BEFORE PROCEEDING WITH CONSTRUCTION.

B.M. ELEV. IB @ NW CORNER OF 282 GARTON AVE 232.534

DESIGNED BY	J.W.	CHECKED BY	C.H.
DRAWN BY	J.W.	APPROVED BY	
DATE	2020/02/18		



THE CITY OF WINNIPEG
PUBLIC WORKS DEPARTMENT

FOREST COVE DR
FROM GARTON AVE TO JONATHAN CRES
ASPHALT OVERLAY AND ASSOCIATED WORKS
FROM STA. 2+00 TO STA. 2+95

CITY DRAWING NUMBER SE-20-19
SHEET 19 OF 39

2