

CONSTRUCTION NOTES

1. REMOVE & REPLACE EXISTING CONCRETE WITH NEW 150mm REINFORCED CONCRETE PAVEMENT
2. LIMIT OF ASPHALT OVERLAY
3. REMOVE EXISTING ASPHALT OVERLAY
4. CONSTRUCT NEW ASPHALT OVERLAY
5. REMOVE EXISTING AND CONSTRUCT NEW 100mm CONCRETE SIDEWALK (SD-228A)
6. REMOVE EXISTING MOUNTABLE CURB AND CONSTRUCT NEW BARRIER CURB (SD-205)
7. REMOVE EXISTING APPROACH AND CONSTRUCT NEW 150mm REINFORCED CONCRETE APPROACH (SD-236)
8. INSTALL NEW CURB AND GUTTER INLET FRAME AND COVER (AP-011, AP-012)
9. REMOVE EXISTING CATCH PIT AND INSTALL NEW 1200mm CATCH BASIN WITH MOUNTABLE CURB AND GUTTER FRAME AND COVER (AP-015, AP-016, SD-024) CONNECT TO EXISTING CATCH PIT, AND CONNECT TO EXISTING CATCH BASIN AS PER CW 2130
10. REGRADE EXISTING PATIO BLOCKS
11. REGRADE EXISTING PAVING STONES
12. REMOVE EXISTING MOUNTABLE CURB AND CONSTRUCT NEW MOUNTABLE CURB (SD-201)

GENERAL NOTES

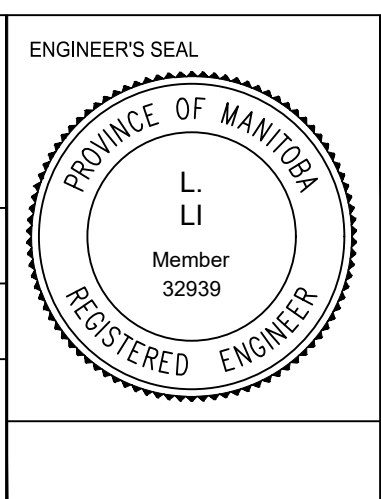
- A. PAVEMENT DIMENSIONS ARE TO BACK OF CURB
- B. ALL CURB RADII UNDER 15.0m SHALL BE MODIFIED (SD-203B)
- C. CURB REPLACEMENT AS DIRECTED BY CONTRACT ADMINISTRATOR
- D. PAVEMENT REPAIRS SHOWN ARE ONLY A REPRESENTATIVE SAMPLE OF THE TENDER QUANTITIES
- E. ASPHALT TIE-INS ON APPROACHES TO BE DETERMINED IN THE FIELD BY THE CONTRACTOR ADMINISTRATOR

METRIC
WHOLE NUMBERS INDICATE MILLIMETERS
DECIMALIZED NUMBERS INDICATE METERS
BID OPPORTUNITY NO. 4-2020

⊕	HYDRANT	◆	---	LDS/WWS	---	---	CONCRETE	---
⊗	VALVE	●	---	WATERMAIN	---	---	CONCRETE SIDEWALK	---
⊙	CURB STOP	●	---	GAS	---	---	ASPHALT	---
○	MANHOLE	●	---	TRAFFIC SIGNALS	---	---	---	---
□	CATCH BASIN	●	---	HYDRO/STREET LIGHT	---	EXISTING	LEGEND - PLAN	PROPOSED
△	CURB INLET	▲	---	MTS/SHAW	---	---	---	---
○	HYDRO POLE	●	---	CURB RENEWAL	---	---	NORTH GUTTER	---
○	LIGHT STANDARD	●	---	PROPERTY LINE	---	---	CENTER LINE	---
○	TRAFFIC SIGNAL POLE	●	---	RAMP CURB	---	---	SOUTH GUTTER	---
+	SURVEY BAR	+	---	ELEVATIONS	(31.000)	---	NORTH SIDEWALK	---
▲	GEODETIC BENCH MARK	▲	---	TREE	---	---	SOUTH SIDEWALK	---
---	EXISTING	---	---	LEGEND - PLAN	---	---	LEGEND - PROFILE	---
---	LEGEND - PLAN	---	---	PROPOSED	---	---	PROPOSED	---

LOCATION APPROVED		B.M. ELEV.	IB @ NE CORNER OF 43 CASLON PL 231.675	
UNDERGROUND STRUCTURES				
SUPR. U/G STRUCTURES	DATE			
COMMITTEE				
NOTE:				
LOCATION OF UNDERGROUND STRUCTURES AS SHOWN ARE BASED ON THE BEST INFORMATION AVAILABLE. BUT NO GUARANTEE IS GIVEN THAT ALL EXISTING UTILITIES ARE SHOWN OR THAT THE GIVEN LOCATIONS ARE EXACT.				
CONFIRMATION OF EXISTENCE AND EXACT LOCATION OF ALL SERVICES MUST BE OBTAINED FROM THE INDIVIDUAL UTILITIES BEFORE PROCEEDING WITH CONSTRUCTION.				

ENGINEERING DIVISION TECHNOLOGY SERVICES BRANCH 106 - 1155 PACIFIC AVE			
DESIGNED BY	E.H. & J.W.	CHECKED BY	C.H.
DRAWN BY	E.H. & J.W.	APPROVED BY	
HOR. SCALE: 1 : 250		VERTICAL: 1 : 10	
DATE: 2020/02/18			
2.	ISSUED FOR CONSTRUCTION	14/02/20	J.W.
1.	SUBMIT FOR PLAN APPROVAL	12/20/19	J.W.
NO.	REVISIONS	DATE	BY



THE CITY OF WINNIPEG
PUBLIC WORKS DEPARTMENT

COUNCILLOR BAY
FROM MANILA ROAD TO MANILA ROAD
ASPHALT OVERLAY AND ASSOCIATED WORKS
FROM STA. 4+05 TO STA. 5+00

CITY DRAWING NUMBER SE-20-16
SHEET 16 OF 39
4