

- CONSTRUCTION NOTES**
- REMOVE & REPLACE EXISTING CONCRETE WITH NEW 150mm REINFORCED CONCRETE PAVEMENT
 - LIMIT OF ASPHALT OVERLAY
 - REMOVE EXISTING ASPHALT OVERLAY
 - CONSTRUCT NEW ASPHALT OVERLAY
 - REMOVE EXISTING AND CONSTRUCT NEW 100mm CONCRETE SIDEWALK (SD-228A)
 - REMOVE EXISTING MOUNTABLE CURB AND CONSTRUCT NEW BARRIER CURB (SD-205)
 - REMOVE EXISTING APPROACH AND CONSTRUCT NEW 150mm REINFORCED CONCRETE APPROACH (SD-236)
 - INSTALL NEW CURB AND GUTTER INLET FRAME AND COVER (AP-011, AP-012)
 - REMOVE EXISTING CATCH PIT AND INSTALL NEW 1200mm CATCH BASIN WITH MOUNTABLE CURB AND GUTTER FRAME AND COVER (AP-015, AP-016, SD-024) CONNECT TO EXISTING CATCH PIT, AND CONNECT TO EXISTING CATCH BASIN AS PER CW 2130
 - REGRADE EXISTING PATIO BLOCKS
 - REGRADE EXISTING PAVING STONES
 - REMOVE EXISTING MOUNTABLE CURB AND CONSTRUCT NEW MOUNTABLE CURB (SD-201)
- GENERAL NOTES**
- PAVEMENT DIMENSIONS ARE TO BACK OF CURB
 - ALL CURB RADII UNDER 15.0m SHALL BE MODIFIED (SD-203B)
 - CURB REPLACEMENT AS DIRECTED BY CONTRACT ADMINISTRATOR
 - PAVEMENT REPAIRS SHOWN ARE ONLY A REPRESENTATIVE SAMPLE OF THE TENDER QUANTITIES
 - ASPHALT TIE-INS ON APPROACHES TO BE DETERMINED IN THE FIELD BY THE CONTRACTOR ADMINISTRATOR

METRIC
WHOLE NUMBERS INDICATE MILLIMETERS
DECIMALIZED NUMBERS INDICATE METERS
BID OPPORTUNITY NO. 4-2020

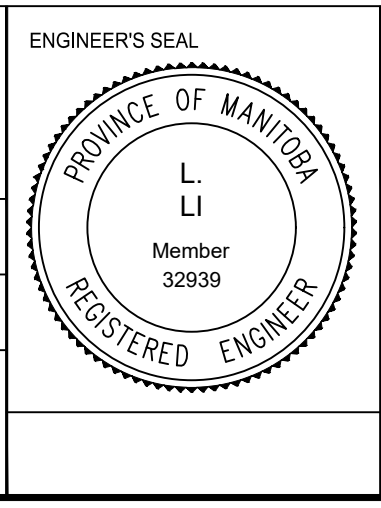
EXISTING	LEGEND - PLAN	PROPOSED	EXISTING	LEGEND - PLAN	PROPOSED	EXISTING	LEGEND - PROFILE	PROPOSED
⊕	HYDRANT	◆	---	LDS/WWS	---	---	CONCRETE	---
⊗	VALVE	◆	---	WATERMAIN	---	---	CONCRETE SIDEWALK	---
⊙	CURB STOP	●	---	GAS	---	---	ASPHALT	---
○	MANHOLE	●	---	TRAFFIC SIGNALS	---	---		---
□	CATCH BASIN	●	---	HYDRO/STREET LIGHT	---	---	LEGEND - PLAN	PROPOSED
△	CURB INLET	▲	---	MTS/SHAW	---	---	LEGEND - PROFILE	PROPOSED
○	HYDRO POLE	●	---	CURB RENEWAL	---	---	NORTH GUTTER	---
○	LIGHT STANDARD	●	---	PROPERTY LINE	---	---	CENTER LINE	---
○	TRAFFIC SIGNAL POLE	●	---	RAMP CURB	---	---	SOUTH GUTTER	---
+	SURVEY BAR	+	---	ELEVATIONS	(31.000)	---	NORTH SIDEWALK	---
⊕	GEODETIC BENCH MARK	⊕	---	TREE	---	---	SOUTH SIDEWALK	---

LOCATION APPROVED
UNDERGROUND STRUCTURES

DATE

NOTE:
LOCATION OF UNDERGROUND STRUCTURES AS SHOWN ARE BASED ON THE BEST INFORMATION AVAILABLE. BUT NO GUARANTEE IS GIVEN THAT ALL EXISTING UTILITIES ARE SHOWN OR THAT THE GIVEN LOCATIONS ARE EXACT. CONFIRMATION OF EXISTENCE AND EXACT LOCATION OF ALL SERVICES MUST BE OBTAINED FROM THE INDIVIDUAL UTILITIES BEFORE PROCEEDING WITH CONSTRUCTION.

B.M. ELEV.	IB @ NE CORNER OF 43 CASLON PL 231.675		
DESIGNED BY	E.H. & J.W.	CHECKED BY	C.H.
DRAWN BY	E.H. & J.W.	APPROVED BY	
NO.	REVISIONS	DATE	BY
2.	ISSUED FOR CONSTRUCTION	14/02/20	J.W.
1.	SUBMIT FOR PLAN APPROVAL	12/20/19	J.W.
		2020/02/18	



THE CITY OF WINNIPEG
PUBLIC WORKS DEPARTMENT

COUNCILLOR BAY
FROM MANILA ROAD TO MANILA ROAD
ASPHALT OVERLAY AND ASSOCIATED WORKS
FROM STA. 1+00 TO STA. 2+00

CITY DRAWING NUMBER
SE-20-13
SHEET 13 OF 39

1