

- CONSTRUCTION NOTES**
1. REMOVE EXISTING PAVEMENT AND CONSTRUCT NEW 200mm REINFORCED CONCRETE PAVEMENT
 2. RECONSTRUCT 100mm CONCRETE SIDEWALK (SD-228A)
 3. REMOVE EXISTING CURB AND CONSTRUCT NEW BARRIER CURB
 4. INSTALL NEW 1800mm CATCH BASIN WITH CURB AND GUTTER INLET (SD-024), CONNECT TO EXISTING CATCH BASIN LEAD AS PER CW 2130
 5. INSTALL NEW CURB AND GUTTER INLET FRAME AND COVER (AP-011, AP-012)
 6. REMOVE EXISTING ASPHALT AND INSTALL NEW 100mm CONCRETE SIDEWALK
 7. REMOVE EXISTING ASPHALT OVERLAY
 8. CONSTRUCT NEW ASPHALT OVERLAY 80mm (TYP)
 9. REMOVE EXISTING CATCH BASIN AND CURB INLET AS PER CW 2130
 10. REMOVE EXISTING EXISTING CONCRETE AND CONSTRUCT NEW 150mm REINFORCED CONCRETE APPROACH (SD-232)
 11. CONSTRUCT NEW MONOLITHIC CURB AND 3.6m SIDEWALK (SD-228B)
 12. ABANDON EXISTING CATCH BASIN AND INSTALL NEW 1800mm CATCH BASIN WITH CURB AND GUTTER INLET (SD-024), CONNECT TO EXISTING 2250 SRS.

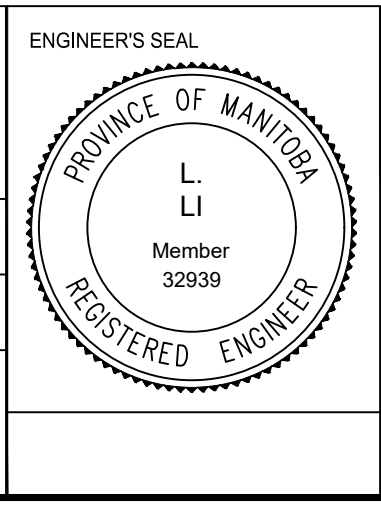
- GENERAL NOTES**
- A. PAVEMENT DIMENSIONS ARE TO BACK OF CURB
 - B. ALL CURB RADII UNDER 15.0m SHALL BE MODIFIED
 - C. CURB REPLACEMENT AS DIRECTED BY CONTRACT ADMINISTRATOR
 - D. ASPHALT TIE-INS ON APPROACHES TO BE DETERMINED IN THE FIELD BY THE CONTRACT ADMINISTRATOR
 - E. PAVEMENT REPAIRS SHOWN ARE ONLY A REPRESENTATIVE SAMPLE OF THE TENDER QUANTITIES

METRIC
WHOLE NUMBERS INDICATE MILLIMETERS
DECIMALIZED NUMBERS INDICATE METERS
BID OPPORTUNITY NO. 4-2020

⊕	HYDRANT	◆	---	LDS/WWS	---	CONCRETE	---
⊗	VALVE	●	---	WATERMAIN	---	CONCRETE SIDEWALK	---
⊙	CURB STOP	●	---	GAS	---	ASPHALT	---
○	MANHOLE	●	---	TRAFFIC SIGNALS	---		
□	CATCH BASIN	●	---	HYDRO/STREET LIGHT	---	EXISTING	LEGEND - PLAN
△	CURB INLET	▲	---	MTS/SHAW	---	PROPOSED	LEGEND - PROFILE
○	HYDRO POLE	●	---	CURB RENEWAL	---		
○	LIGHT STANDARD	●	---	PROPERTY LINE	---		
○	TRAFFIC SIGNAL POLE	●	---	RAMP CURB	---		
+	SURVEY BAR	+	---	ELEVATIONS	(31.000)		
⊕	GEODETIC BENCH MARK	⊕	---	TREE	---		
---	EXISTING	---	---	LEGEND - PLAN	---	---	---
---	LEGEND - PLAN	---	---	LEGEND - PROFILE	---	---	---

LOCATION APPROVED		B.M. ELEV.	GBM 26-076 232.071
UNDERGROUND STRUCTURES			
SUPR. U/G STRUCTURES COMMITTEE	DATE		
NOTE: LOCATION OF UNDERGROUND STRUCTURES AS SHOWN ARE BASED ON THE BEST INFORMATION AVAILABLE. BUT NO GUARANTEE IS GIVEN THAT ALL EXISTING UTILITIES ARE SHOWN OR THAT THE GIVEN LOCATIONS ARE EXACT. CONFIRMATION OF EXISTENCE AND EXACT LOCATION OF ALL SERVICES MUST BE OBTAINED FROM THE INDIVIDUAL UTILITIES BEFORE PROCEEDING WITH CONSTRUCTION.			

ENGINEERING DIVISION TECHNOLOGY SERVICES BRANCH 106 - 1155 PACIFIC AVE			
DESIGNED BY	T.K.	CHECKED BY	C.H.
DRAWN BY	T.K.	APPROVED BY	
HOR. SCALE:	1 : 250		
VERTICAL:	1 : 10		
DATE	2020/02/21		
NO.	REVISIONS	DATE	BY
2.	ISSUED FOR CONSTRUCTION	14/02/20	J.W.
1.	SUBMIT FOR PLAN APPROVAL	11/12/19	J.W.



THE CITY OF WINNIPEG
PUBLIC WORKS DEPARTMENT

BURROWS AVENUE WB
FROM MAIN STREET TO POWERS STREET
ASPHALT OVERLAY AND ASSOCIATED WORKS
FROM STA. 2+20 TO STA. 3+40

CITY DRAWING NUMBER
SE-20-05
SHEET 5 OF 39

2