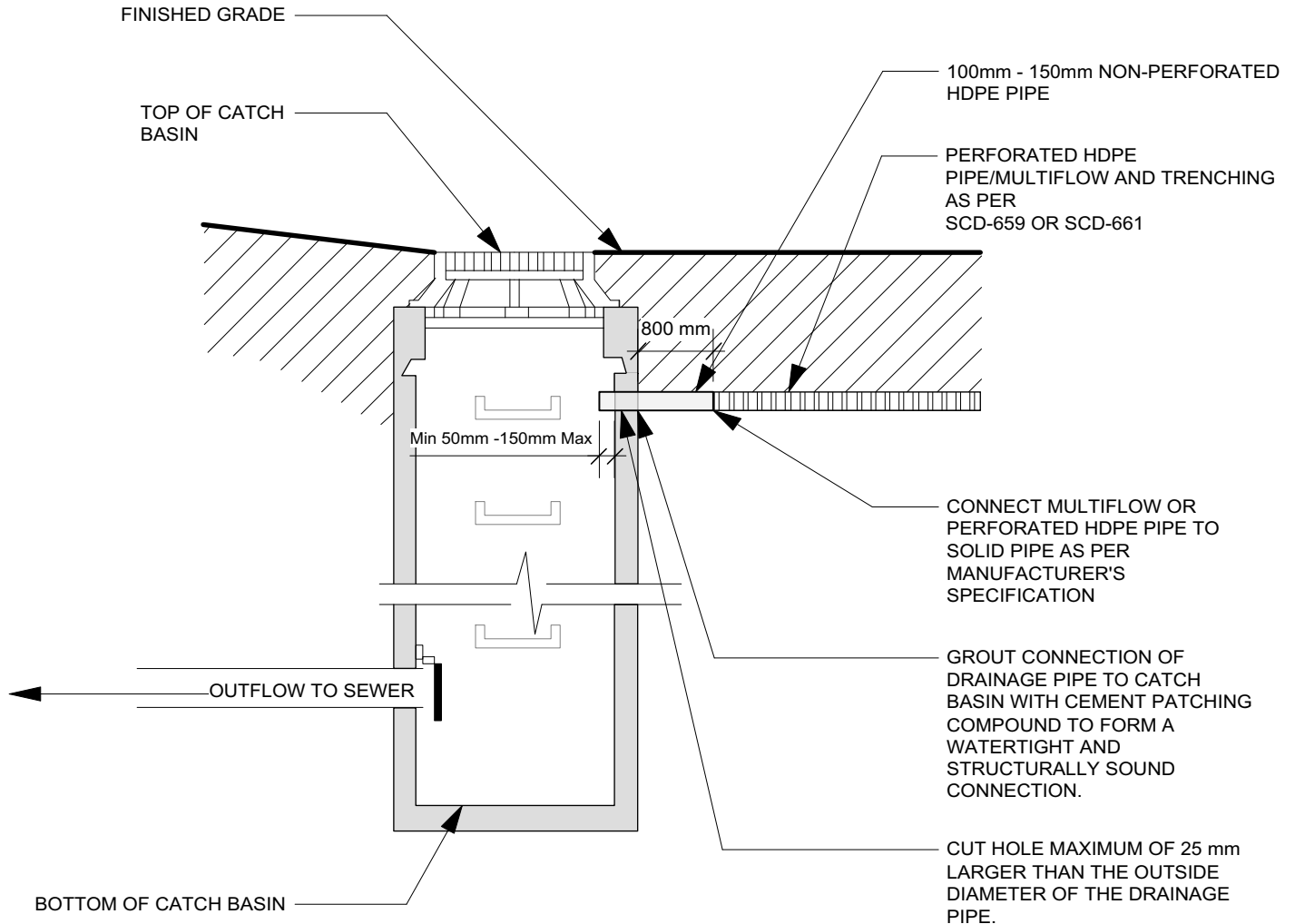


Connection of Subdrain to Existing Catch Basin

SCD-665



NOTES:

1. Dimensions are in millimeters unless otherwise noted.
2. Multi-flow connection to catch basin to be via Multi-Flow 100mm (4") end outlet into 100mm (4") HDPE pipe. HDPE pipe to be connected to catch basin as per City of Winnipeg Standard Specification CW 3120.3.5.
3. Supply cement patching compound in accordance with Section 2.10 of CW 2130.
4. No bends greater than 45° will be permitted to alter the grade or alignment of the drainage pipe for the catch basin connection.

Revision: 1
 DATE: JAN. 2020
 SCALE: 1:6
 DRAWN BY: GZ

The City of Winnipeg
 Planning, Property and Development Department
 Urban Planning and Design Division
 Unit 15 - 30 Fort Street, Winnipeg, MB, R3C 4X5

