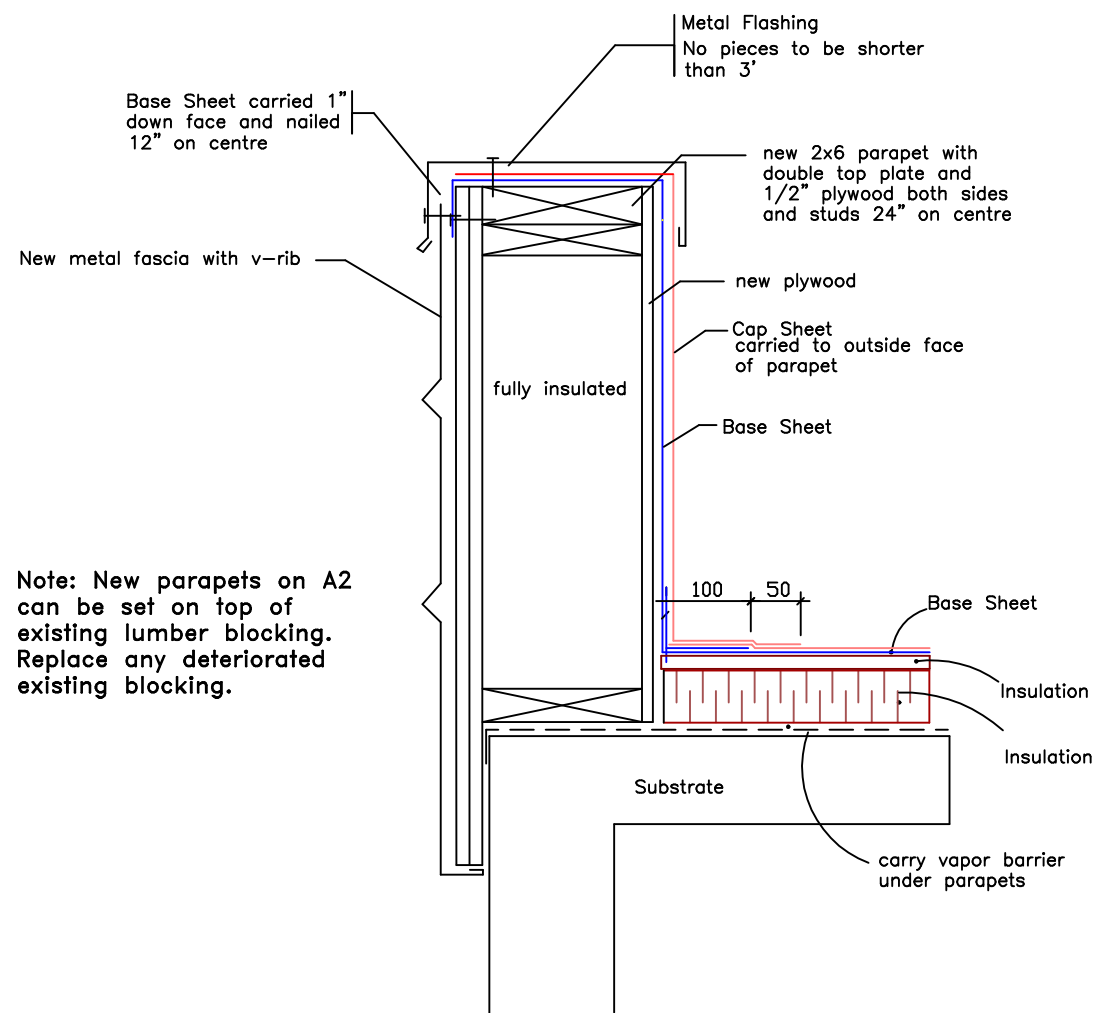


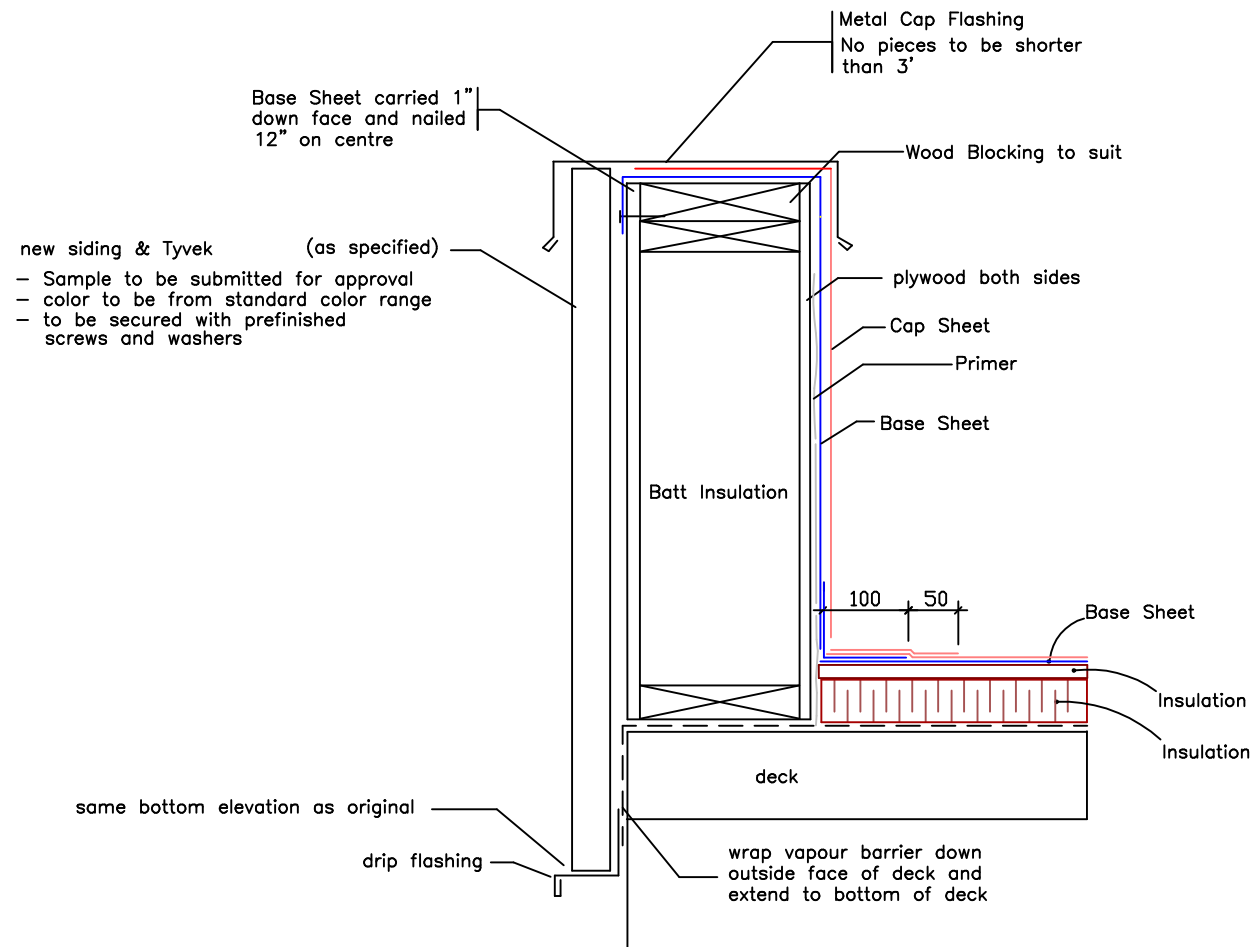
Typical Parapet

(excluding B2 East Parapet)

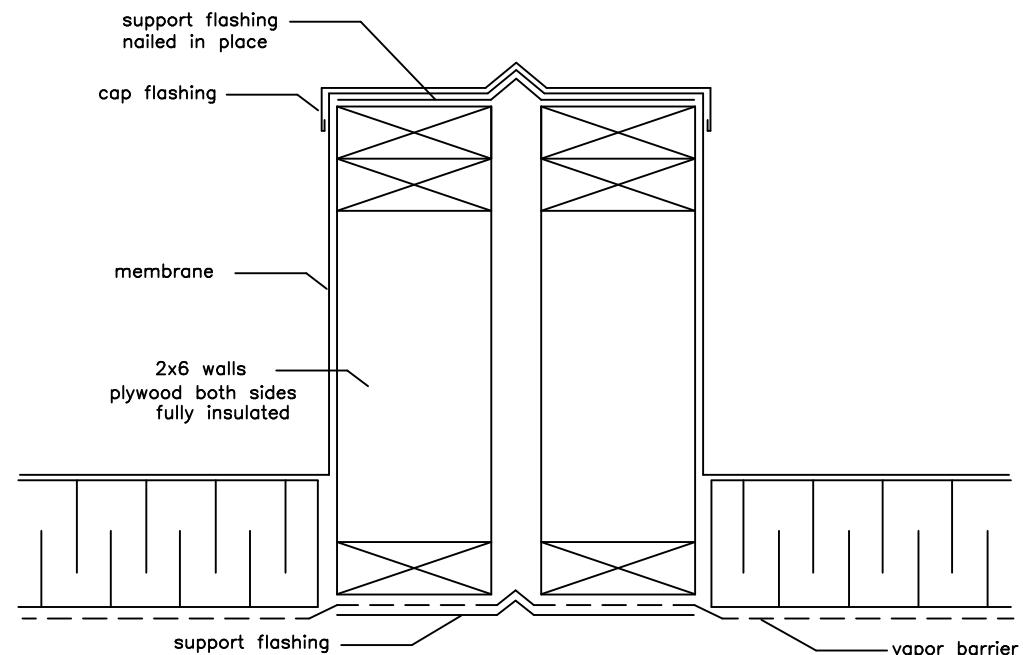


Note: New parapets on A2 can be set on top of existing lumber blocking. Replace any deteriorated existing blocking.

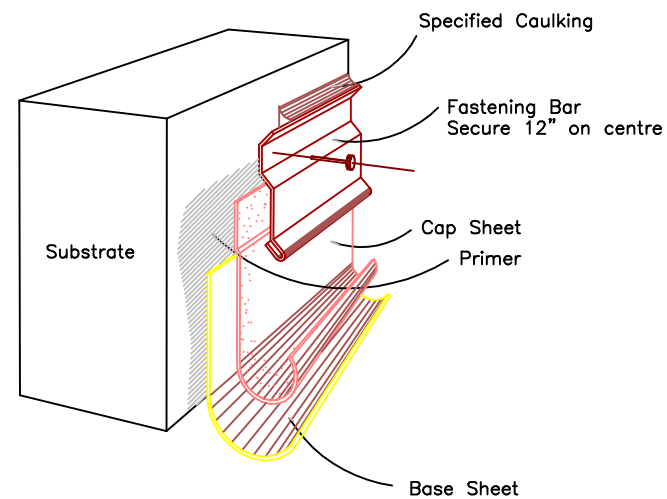
B2 East Parapet




Expansion Joint



Typical Fastening Bar



	
Agassiz Consulting Group Ltd. Box 41, Warren, Manitoba R0C 3E0 Office Phone: (204) 383-5538	
Project:	Commercial Building 1539 Waverley Winnipeg, MB
Date:	March 17, 2020
Drawing No.	D-1
File no:	3893-20B
Scale:	NTS