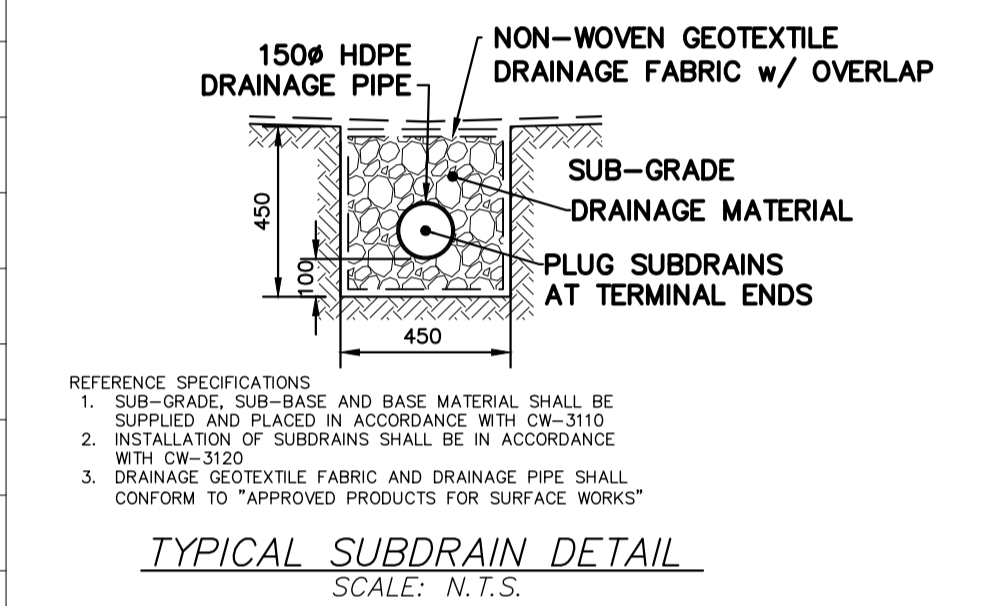
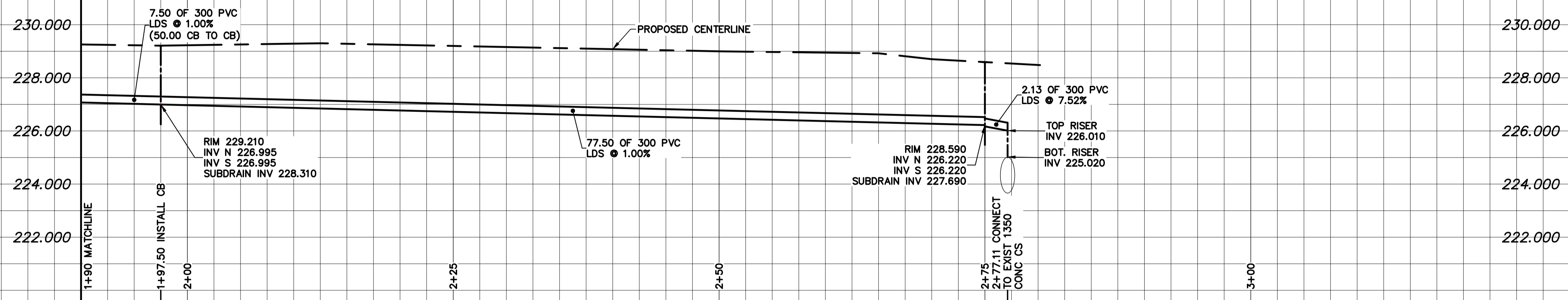


- NOTES:**
1. ALL WORK AND MATERIALS TO BE IN ACCORDANCE WITH THE LATEST REVISION OF THE CITY OF WINNIPEG STANDARD CONSTRUCTION SPECIFICATION.
  2. CONTRACTOR TO CONFIRM THE LOCATION OF ALL UTILITIES/SERVICES IN THE FIELD PRIOR TO CONSTRUCTION.
  3. CONTRACTOR TO AVOID DAMAGE TO EXISTING TREES WITHIN THE LIMITS OF THE ALLEY RIGHT OF WAY AS OUTLINED IN THE BID OPPORTUNITY.
  4. HYDRO POLES AND ANCHORS REQUIRING TEMPORARY SUPPORT TO BE DONE AT THE EXPENSE OF THE CONTRACTOR AS REQUIRED.
  5. WHERE UNSTABLE SUB-GRADES ARE ENCOUNTERED, ADDITIONAL EXCAVATION/SUB-BASE AND INSTALLATION OF GEOGRID TO BE DETERMINED BY THE CONTRACT ADMINISTRATOR AND CONSTRUCTED IN ACCORDANCE W/ CW-310.
  6. PROPOSED ELEVATIONS GIVEN ARE FOR EDGE OF PAVEMENT.
  7. ISOLATE EXISTING HYDRO POLES AS PER SD-228C.
  8. RENEW CURBS AND SIDEWALK AS DIRECTED BY THE CONTRACT ADMINISTRATOR. APPROACHES, ETC.
  9. MODIFIED BARRIER CURBS TO BE CONSTRUCTED AT ALL BACK LANE RADI.
  10. ALL EXISTING PRIVATE APPROACHES TO BE RENEWED AS DIRECTED BY THE CONTRACT ADMINISTRATOR.
  11. ADJUSTMENTS TO PROPOSED CROSSFALL, WHERE REQUIRED, ARE TO BE DETERMINED BY THE CONTRACT ADMINISTRATOR TO SUIT EXISTING DRIVEWAYS, APPROACHES, ETC.
  12. ALL BOULEVARD RESTORATION TO BE SODDED UNLESS OTHERWISE NOTED.
  13. INSTALLATION OF LIP CURBS AND THEIR LIMITS THROUGH PRIVATE APPROACHES TO BE DETERMINED BY THE CONTRACT ADMINISTRATOR.
  14. REMOVE, ADJUST, AND SUPPLY PRECAST SIDEWALK BLOCKS AS DIRECTED BY THE CONTRACT ADMINISTRATOR.

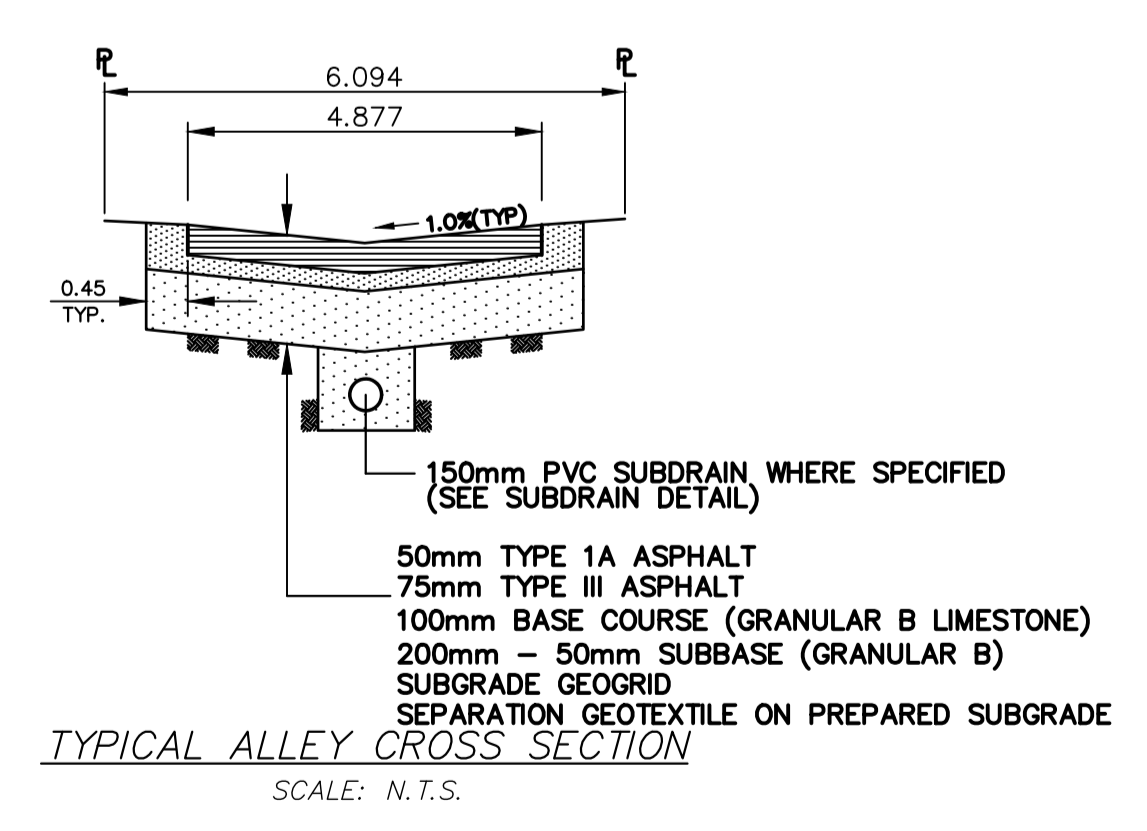
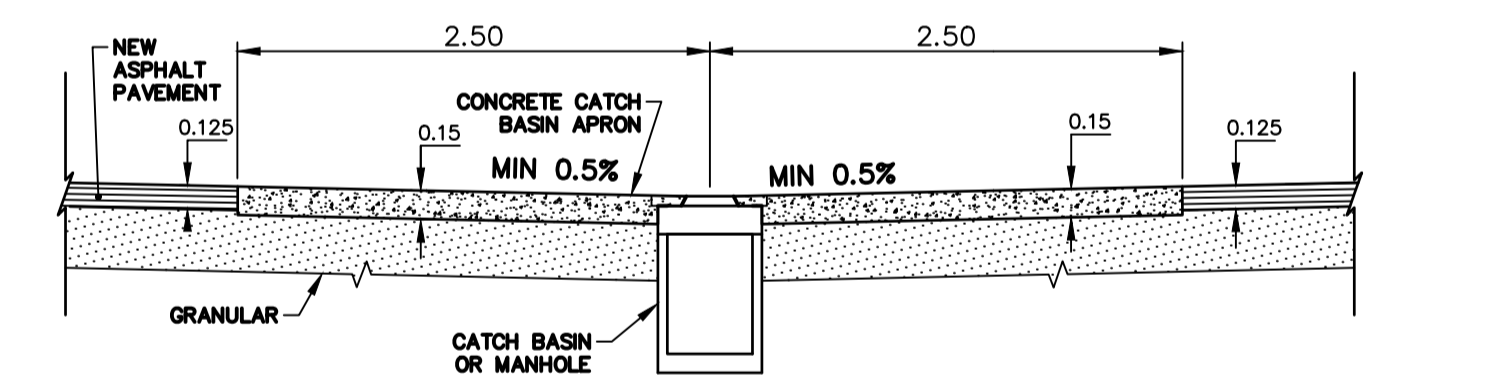
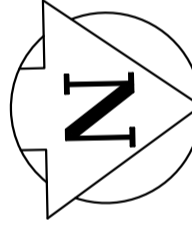
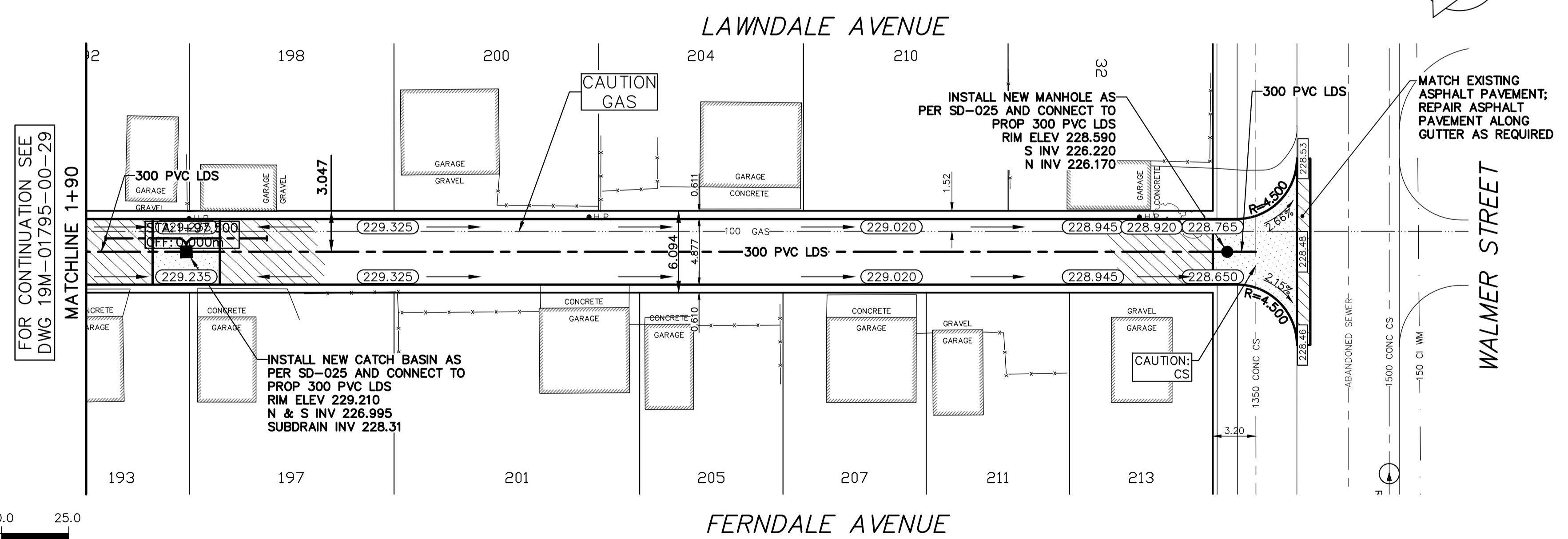
**ALLEY PAVEMENT PROFILE**  
SCALE: 1:250 HOR  
1:10 VER



**REFERENCE SPECIFICATIONS**

1. SUB-GRADE, SUB-BASE AND BASE MATERIAL SHALL BE SUPPLIED AND PLACED IN ACCORDANCE WITH CW-310.
2. INSTALLATION OF SUBDRAINS SHALL BE IN ACCORDANCE WITH CW-310.
3. DRAINAGE GEOTEXTILE FABRIC AND DRAINAGE PIPE SHALL CONFORM TO "APPROVED PRODUCTS FOR SURFACE WORKS".

**NOTE: CHAINAGES SHOWN ARE ALONG CL OF RIGHT-OF-WAY**  
**LAND DRAINAGE SEWER PROFILE**  
SCALE: 1:250 HOR  
1:100 VER



**METRIC**  
WHOLE NUMBERS INDICATE MILLIMETRES  
DECIMALIZED NUMBERS INDICATE METRES  
UNLESS OTHERWISE NOTED

WATERMAIN		M.T.S.		WATERMAIN		LOCATION APPROVED UNDERGROUND STRUCTURES	
○	HYDRANT	—	CONCRETE/ASPHALT	○	VALVE	---	B.M. ELEV.
○	VALVE	---	SIDEWALK	○	LAND DRAINAGE SEWER	---	---
○	CURB STOP	---	CURB RAMP	○	WASTE WATER SEWER	---	---
---	LAND DRAINAGE SEWER	---	ELEVATIONS	---	CENTERLINE	---	---
---	WASTE WATER SEWER	---	PROPERTY LINE	---	SOUTH & EAST GUTTER	---	---
---	CB LEAD	---	SURVEY BAR	---	NORTH & WEST GUTTER	---	---
○	MANHOLE	---	HYDRO POLE	---	S & E GARAGE PAD	---	---
□	CATCH BASIN	---	STREET LIGHT	---	N & W GARAGE PAD	---	---
---	GAS	---	JOINTS	---		---	---
---	HYDRO	---	ASPHALT REPAIR	---		---	---
---	EXISTING	---	LEGEND - PLAN	---	LEGEND - PROFILE	---	---
---	PROPOSED	---	PROPOSED	---	PROPOSED	---	---

NOTE:  
LOCATION OF UNDERGROUND STRUCTURES AS SHOWN ARE BASED ON THE BEST INFORMATION AVAILABLE BUT NO GUARANTEE IS GIVEN THAT ALL EXISTING UTILITIES ARE SHOWN OR THAT THE GIVEN LOCATIONS ARE EXACT. CONFIRMATION OF EXISTENCE AND EXACT LOCATION OF ALL SERVICES MUST BE OBTAINED FROM THE INDIVIDUAL UTILITIES BEFORE PROCEEDING WITH CONSTRUCTION.

NO.	REVISIONS	DATE BY
2	ISSUED FOR TENDER	16/04/20 A.B.
1	PRELIMINARY DESIGN REVIEW	15/01/20 D.R.
NO.		

DESIGNED BY	CHECKED BY
A.B.	S.M.
DRAWN BY	APPROVED BY
D.R.	S.M.
HOR. SCALE	VERT. SCALE
1:250	AS SHOWN
DATE BY	RELEASED FOR CONSTRUCTION
JANUARY 2020	---

**NOT FOR CONSTRUCTION**

**THE CITY OF WINNIPEG**  
PUBLIC WORKS DEPARTMENT

2020 LOCAL IMPROVEMENTS  
**LAWNDALE AVENUE / FERNDALE AVENUE ALLEY**  
FROM STA 1+90 TO WALMER STREET

CONSULTANT DRAWING NO.  
19M-01795-00-30

ASPHALT PAVEMENT

CITY DRAWING NO.  
LD-00000

SHEET 2 OF 2

BID OPPORTUNITY  
260-2020

