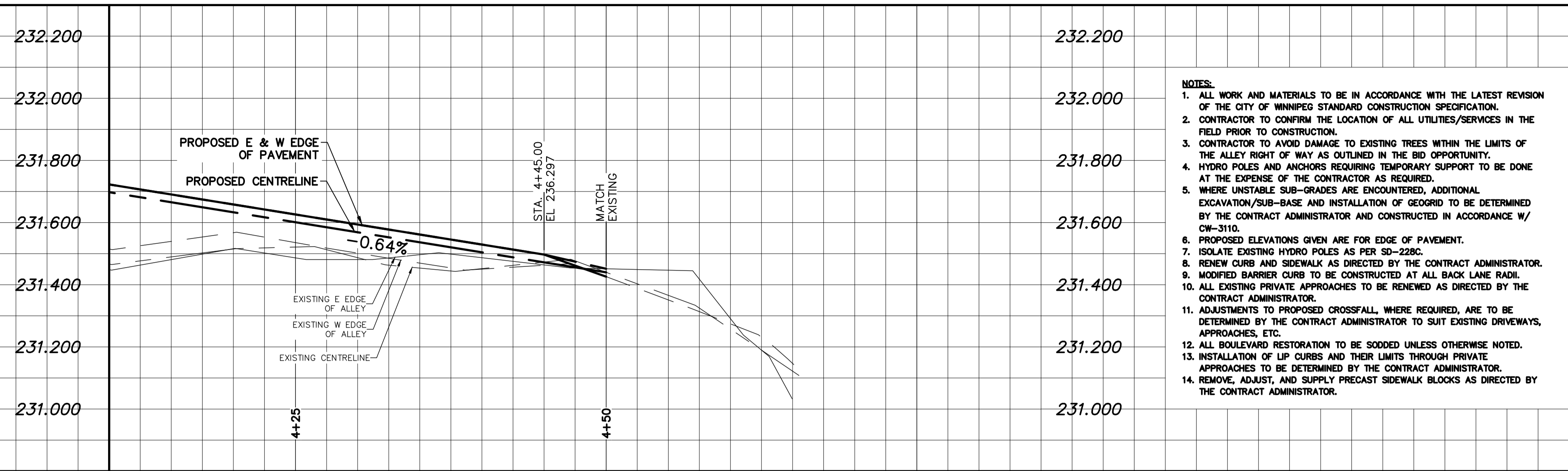
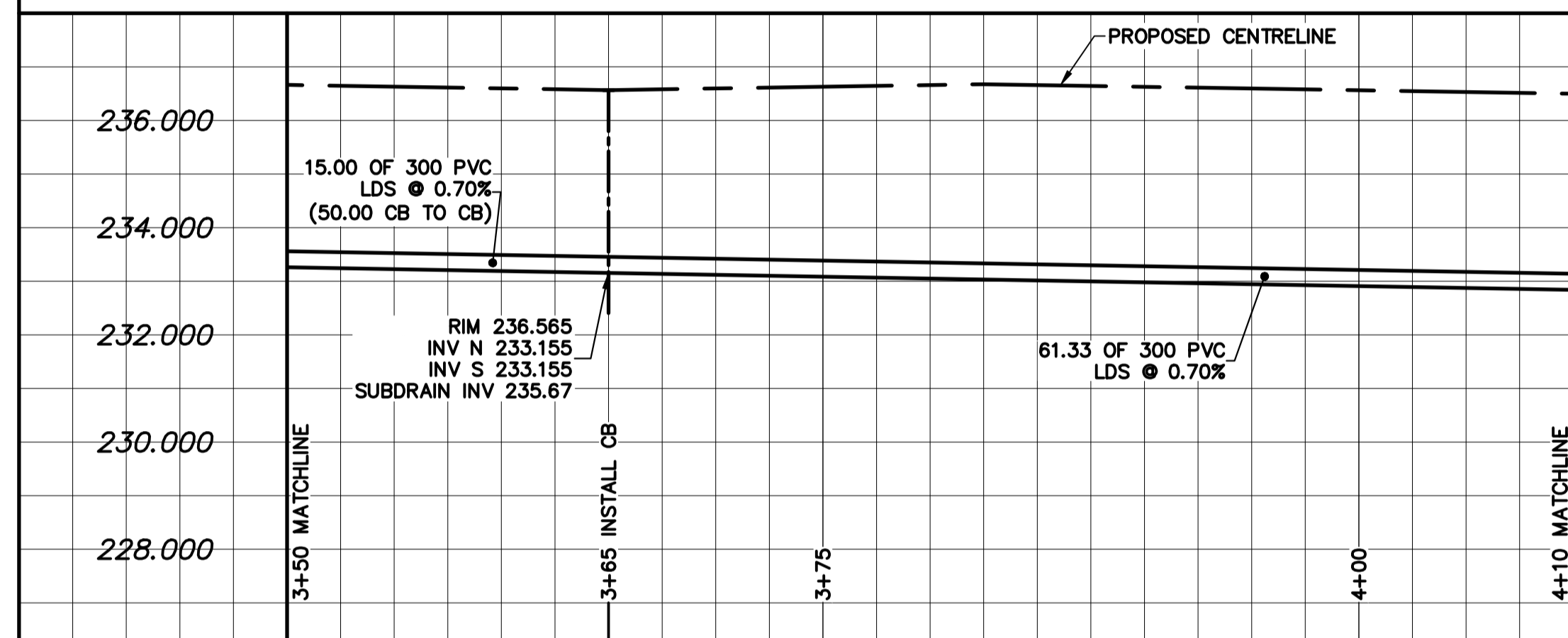


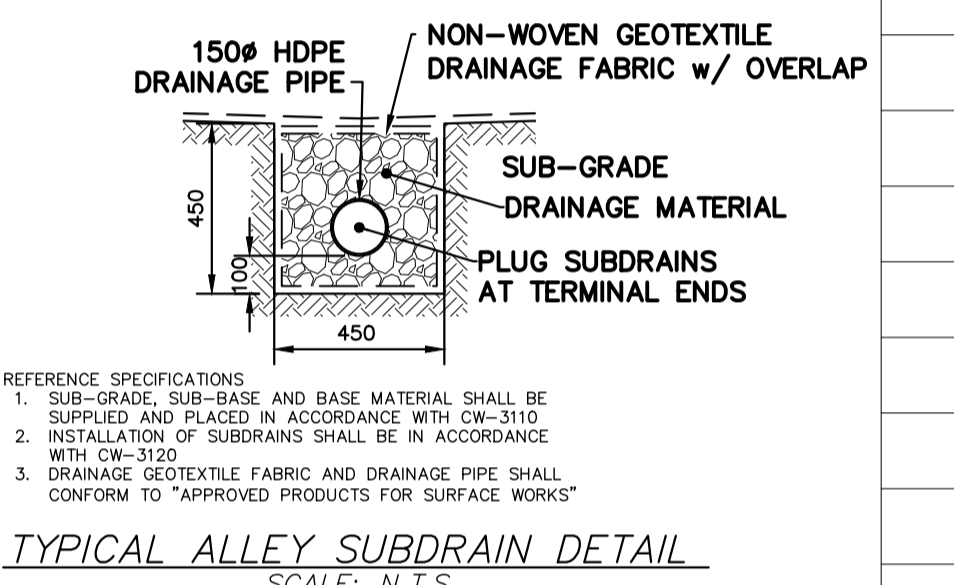
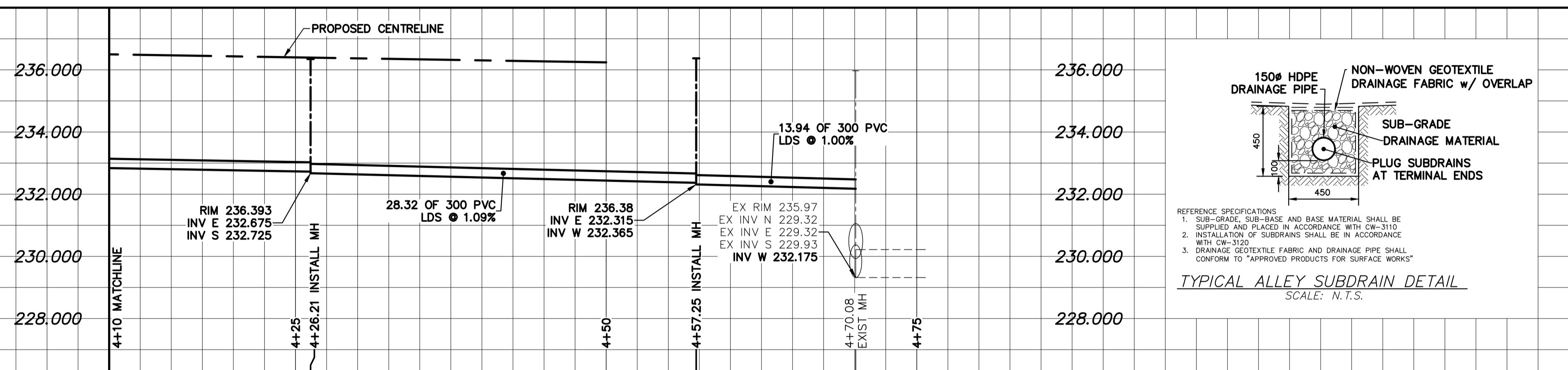
ALLEY PAVEMENT PROFILE
SCALE: 1:250 HOR
1:10 VER



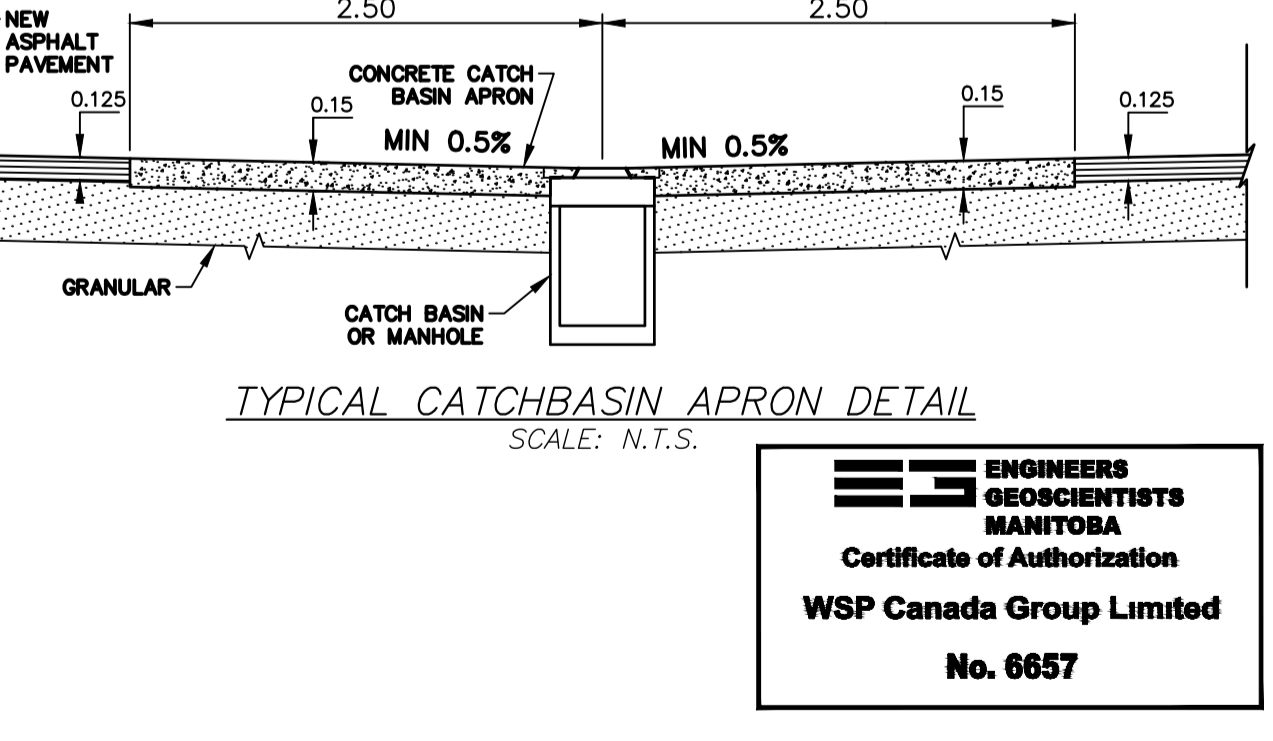
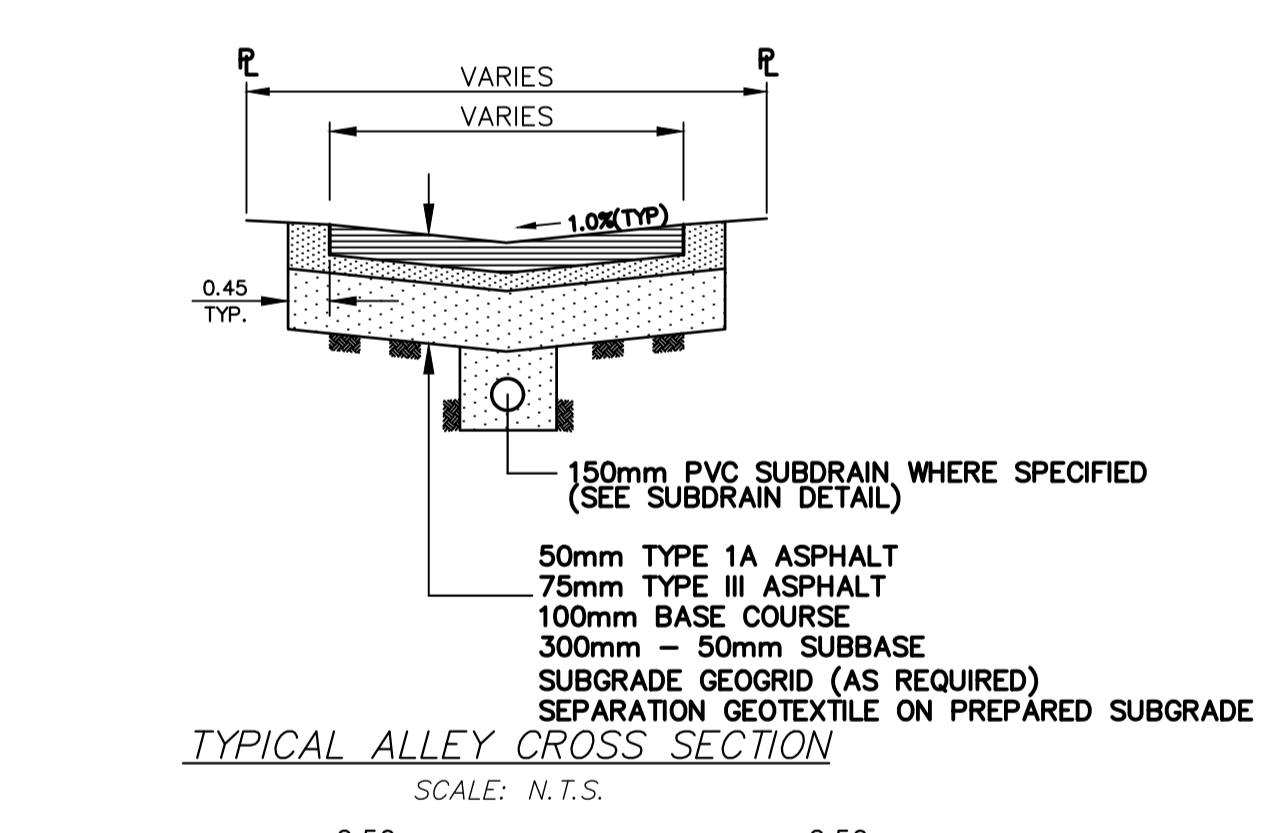
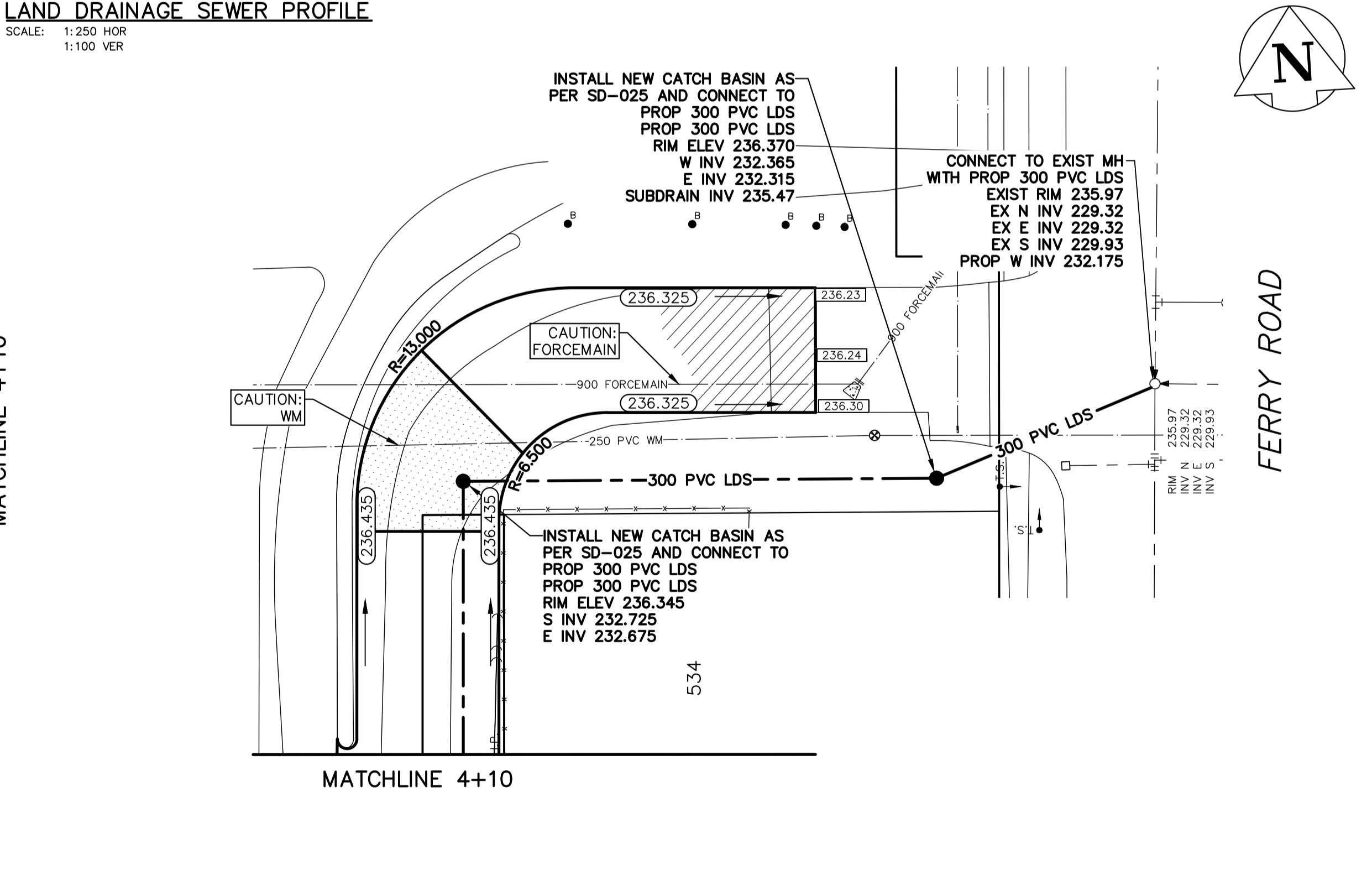
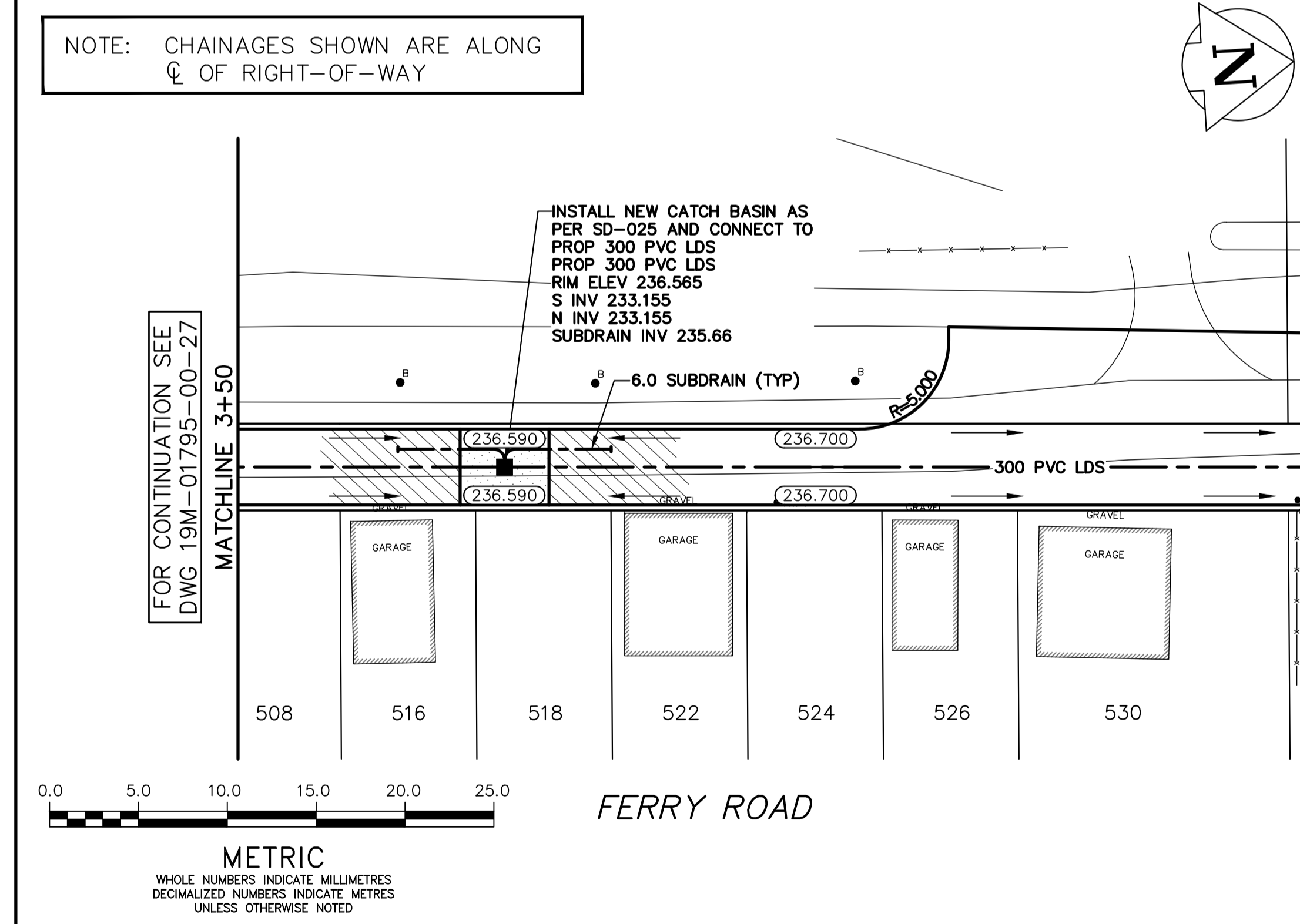
- NOTES:**
1. ALL WORK AND MATERIALS TO BE IN ACCORDANCE WITH THE LATEST REVISION OF THE CITY OF WINNIPEG STANDARD CONSTRUCTION SPECIFICATION.
 2. CONTRACTOR TO CONFIRM THE LOCATION OF ALL UTILITIES/SERVICES IN THE FIELD PRIOR TO CONSTRUCTION.
 3. CONTRACTOR TO AVOID DAMAGE TO EXISTING TREES WITHIN THE LIMITS OF THE ALLEY RIGHT OF WAY AS OUTLINED IN THE BID OPPORTUNITY.
 4. HYDRO POLES AND ANCHORS REQUIRING TEMPORARY SUPPORT TO BE DONE AT THE EXPENSE OF THE CONTRACTOR AS REQUIRED.
 5. WHERE UNSTABLE SUB-GRADES ARE ENCOUNTERED, ADDITIONAL EXCAVATION/SUB-BASE AND INSTALLATION OF GEGRID TO BE DETERMINED BY THE CONTRACT ADMINISTRATOR AND CONSTRUCTED IN ACCORDANCE W/ CW-310.
 6. PROPOSED ELEVATIONS GIVEN ARE FOR EDGE OF PAVEMENT.
 7. ISOLATE EXISTING HYDRO POLES AS PER SD-228C.
 8. RENEW CURB AND SIDEWALK AS DIRECTED BY THE CONTRACT ADMINISTRATOR.
 9. MODIFIED BARRIER CURB TO BE CONSTRUCTED AT ALL BACK LANE RADI.
 10. ALL EXISTING PRIVATE APPROACHES TO BE RENEWED AS DIRECTED BY THE CONTRACT ADMINISTRATOR.
 11. ADJUSTMENTS TO PROPOSED CROSSFALL, WHERE REQUIRED, ARE TO BE DETERMINED BY THE CONTRACT ADMINISTRATOR TO SUIT EXISTING DRIVEWAYS, APPROACHES, ETC.
 12. ALL BOULEVARD RESTORATION TO BE SODDED UNLESS OTHERWISE NOTED.
 13. INSTALLATION OF LIP CURBS AND THEIR LIMITS THROUGH PRIVATE APPROACHES TO BE DETERMINED BY THE CONTRACT ADMINISTRATOR.
 14. REMOVE, ADJUST, AND SUPPLY PRECAST SIDEWALK BLOCKS AS DIRECTED BY THE CONTRACT ADMINISTRATOR.



LAND DRAINAGE SEWER PROFILE
SCALE: 1:250 HOR
1:100 VER



NOTE: CHAINAGES SHOWN ARE ALONG $\frac{1}{2}$ OF RIGHT-OF-WAY



EXISTING		LEGEND - PLAN		PROPOSED		EXISTING		LEGEND - PROFILE		PROPOSED	
	WATERMAIN		M.T.S.		150 WWS		WATERMAIN		150 WWS		WATERMAIN
	HYDRANT		CONCRETE/ASPHALT		300 LDS		VALVE		300 LDS		VALVE
	VALVE		SIDEWALK		240 WWS		LAND DRAINAGE SEWER		240 WWS		LAND DRAINAGE SEWER
	CURB STOP		CURB RAMP		CENTERLINE		SOUTH & EAST GUTTER		CENTERLINE		SOUTH & EAST GUTTER
	LAND DRAINAGE SEWER		PROPERTY LINE		NORTH & WEST GUTTER		S & E GARAGE PAD		NORTH & WEST GUTTER		S & E GARAGE PAD
	WASTE WATER SEWER		SURVEY BAR		N & W GARAGE PAD		HYDRO POLE		N & W GARAGE PAD		HYDRO POLE
	CB LEAD		STREET LIGHT		JOINTS		ASPHALT REPAIR		JOINTS		ASPHALT REPAIR
	MANHOLE										
	CATCH BASIN										
	GAS										
	HYDRO										

LOCATION APPROVED UNDERGROUND STRUCTURES

SUPV.	U/G	STRUCTURES	DATE
---	---	---	---
---	---	---	---

NOTE: LOCATION OF UNDERGROUND STRUCTURES AS SHOWN ARE BASED ON THE BEST INFORMATION AVAILABLE BUT NO GUARANTEE IS GIVEN THAT ALL EXISTING UTILITIES ARE SHOWN OR THAT THE GIVEN LOCATIONS ARE EXACT. CONFIRMATION OF EXISTENCE AND EXACT LOCATION OF ALL SERVICES MUST BE OBTAINED FROM THE INDIVIDUAL UTILITIES BEFORE PROCEEDING WITH CONSTRUCTION.

B.M. ELEV.	---	---	---
---	---	---	---
---	---	---	---
---	---	---	---
---	---	---	---
---	---	---	---
---	---	---	---
---	---	---	---
---	---	---	---
---	---	---	---

NOT FOR CONSTRUCTION

DESIGNED BY	A.B.	CHECKED BY	S.M.
DRAWN BY	D.R.	APPROVED BY	S.M.
HOR. SCALE:	1:250	RELEASED FOR CONSTRUCTION	---
VERT. SCALE:	AS SHOWN		
DATE	JANUARY 2020		

ENGINEERS GEOSCIENTISTS MANITOBA
Certificate of Authorization
WSP Canada Group Limited
No. 6657

THE CITY OF WINNIPEG
PUBLIC WORKS DEPARTMENT

2020 LOCAL IMPROVEMENTS
FERRY ROAD ALLEY
FROM STA 3+50 TO FERRY ROAD

CONSULTANT DRAWING NO.
19M-01795-00-28

CITY DRAWING NO.
LD-
SHEET 3 OF 3
BID OPPORTUNITY
260-2020