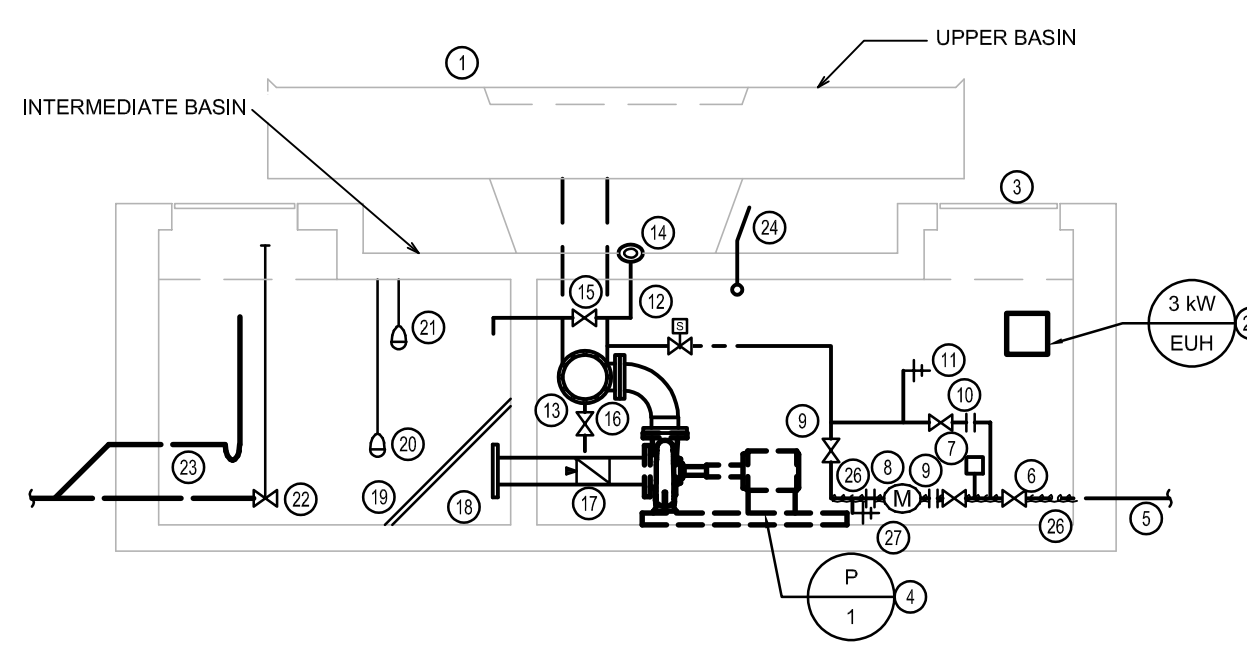
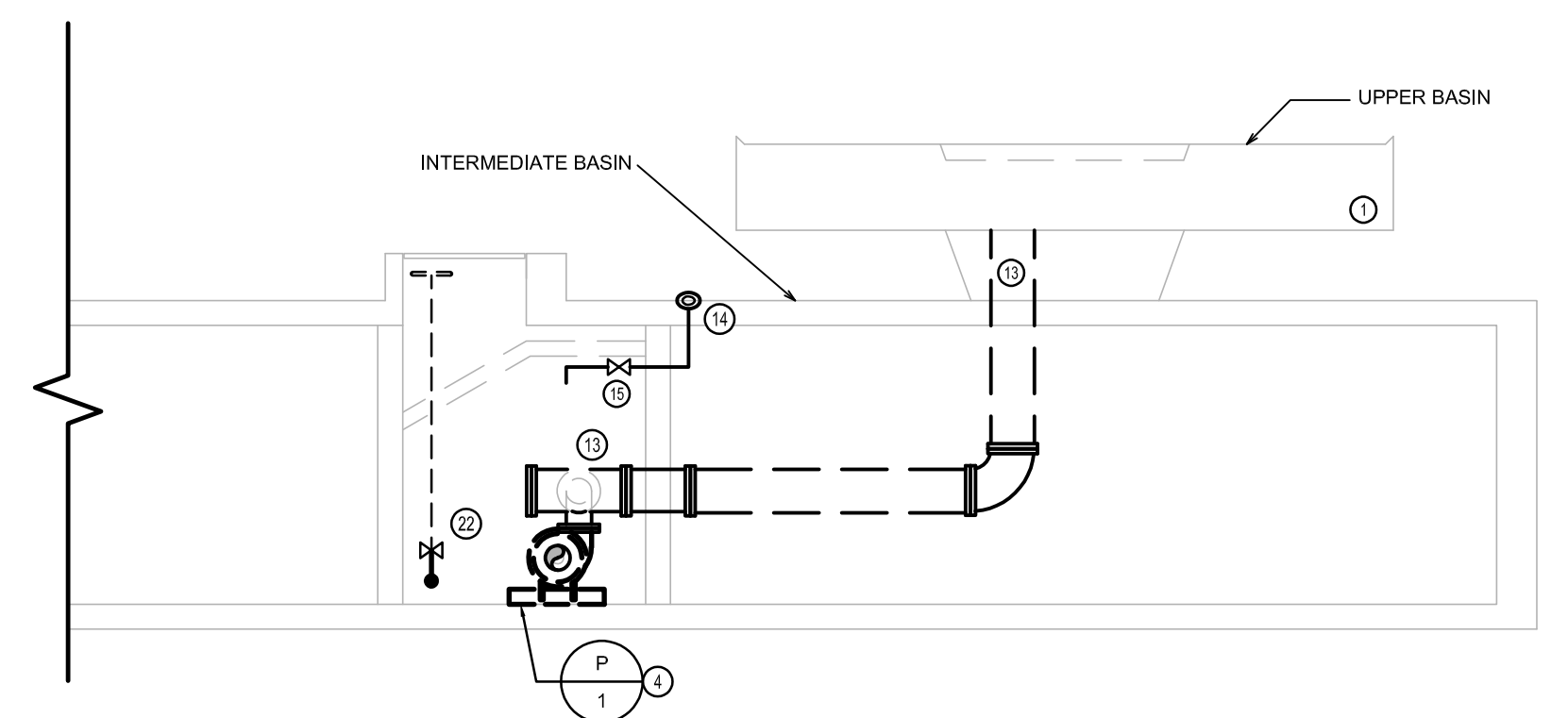


1 MECHANICAL PLAN
M1.0 SCALE: NTS



2 MECHANICAL SECTION (LOOKING WEST)
M1.0 SCALE: NTS



3 MECHANICAL SECTION (LOOKING NORTH)
M1.0 SCALE: NTS

GENERAL NOTES:

- THIS DRAWING IS DIAGRAMMATIC ONLY. DO NOT SCALE.
- THE MECHANICAL SYSTEMS SHOWN ARE APPROXIMATE IN LOCATION ONLY. CONTRACTOR TO VERIFY EXACT LOCATION OF SYSTEMS BEING MODIFIED ON SITE PRIOR TO COMMENCEMENT OF WORK.
- ALL WORK SHALL COMPLY WITH THE MOST CURRENT VERSION OF ALL APPLICABLE CODES AND STANDARDS, WHICH SHALL BE CONSIDERED PART OF THIS SPECIFICATION. IN THE CASE OF CONFLICTING REQUIREMENTS, THE MOST STRINGENT REGULATION SHALL PREVAIL.
- CONTRACTOR TO MAINTAIN CURRENT AND READILY REVIEWABLE AS-BUILT DRAWINGS ACCURATELY REFLECTING SITE INSTALLATIONS.
- CONTRACTOR TO ENSURE ALL MATERIALS MODIFIED OR INSTALLED IN AN AIR PLENUM ARE RATED FOR SUCH USE.
- CONTRACTOR TO MAINTAIN DIGITAL PHOTOGRAPHIC RECORD OF ALL INSTALLATIONS PRIOR TO CONCEALMENT BY SUPPORTING TRADES.
- REPLACE ALL SMALL DIAMETER WATER SUPPLY PIPING WITH NEW COPPER PIPING OF SAME SIZE.
- ANY PIPING EMBEDDED IN CONCRETE TO REMAIN "AS-IS".

DRAWING NOTES:

- UPPER FOUNTAIN BASIN TO REMAIN "AS-IS".
- WET PIT ACCESS HATCH TO REMAIN "AS-IS".
- DRY PIT ACCESS HATCH TO REMAIN "AS-IS".
- FOUNTAIN PUMP TO BE REMOVED AND REPLACED WITH NEW 20HP PUMP.
- INCOMING MUNICIPAL WATER SERVICE TO "REMAIN AS-IS".
- MAIN SHUT-OFF VALVE (BALL) TO REMAIN "AS-IS".
- WATER HAMMER ABSORBER TO BE REMOVED AND REPLACED WITH NEW WATER HAMMER ABSORBER.
- CITY OF WINNIPEG TO SUPPLY NEW MUNICIPAL WATER METER, CONTRACTOR TO INSTALL.
- REPLACE NORMALLY-OPEN WATER METER ISOLATION VALVES (GATE) WITH NEW.
- REPLACE NORMALLY-CLOSED WATER METER BY-PASS VALVE (GATE) WITH NEW.
- REPLACE MAINTENANCE HOSE BIBB WITH NEW.
- REPLACE SOLENOID-CONTROLLED SYSTEM FILL VALVE WITH NEW.
- 10" MAIN WATER SUPPLY TO BE REMOVED AND REPLACED WITH NEW 10" STAINLESS STEEL PIPE UP TO EMBEDDED PIPE.
- INTERMEDIATE BASIN AREA DRAIN (3") TO REMAIN "AS-IS".
- NORMALLY-CLOSED INTERMEDIATE BASIN DRAIN VALVE TO REMAIN "AS-IS".
- REPLACE SUPPLY HEADER DRAIN VALVE WITH NEW. DRAIN TO BE NORMALLY CLOSED.
- CHECK VALVE ON PUMP INLET TO "REMAIN AS-IS"
- EXISTING PUMP INTAKE OPENING IN WET PIT TO REMAIN "AS-IS".
- EXISTING STEEL MESH GRATING TO PROTECT PUMP INTAKE TO BE REPLACED WITH NEW STAINLESS STEEL MESH GRATING OF SIMILAR SIZE AND TYPE.
- EXISTING LOW-LEVEL CONTROL FLOAT (SHUTS OFF PUMP) TO BE REPLACED WITH NEW CONTROL FLOAT.
- EXISTING HIGH-LEVEL CONTROL FLOAT (OPENS FILL VALVE) TO BE REPLACED WITH NEW CONTROL FLOAT.
- NORMALLY-CLOSED, LONG-STEM DRAIN VALVE TO REMAIN "AS-IS".
- EXISTING 3" CAST IRON EMERGENCY OVERFLOW STAND-PIPE WITH P-TRAP TO BE REPLACED WITH NEW 3" CAST IRON PIPE AND P-TRAP.
- VENT PIPE FROM DRY PIT, OPEN-ENDED AT UNDERSIDE OF UPPER BASIN TO REMAIN "AS-IS".
- NEW 3 kW ELECTRIC UNIT HEATER. REFER TO ELECTRICAL.
- INCOMING WATER SUPPLY TO BE HEAT TRACED FOR LENGTH OF PIPE AS SHOWN. REFER TO ELECTRICAL.
- NEW MAINTENANCE DRAIN VALVE TO BE INSTALLED IN LOCATION SHOWN.

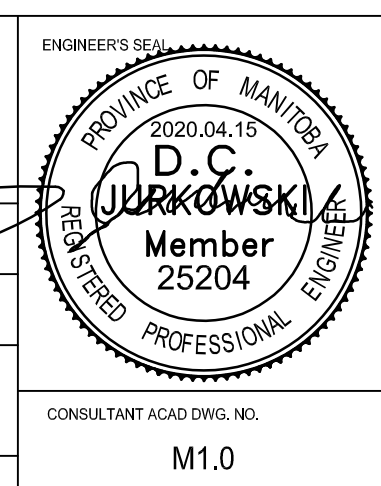
SYMBOL LEGEND

SINGLE LINE PIPE FITTINGS		PLUMBING & DRAINAGE	
	CHECK VALVE		DOMESTIC COLD WATER
	BACK FLOW PREVENTER		SANITARY DRAIN ABOVE
	CONTINUATION		SANITARY DRAIN BELOW
	GAS / WATER METER		VENT
	PUMP		HEAT TRACED DOMESTIC COLD WATER
	SCREWED UNION		
	ELBOW UP		
	ELBOW DOWN		
	GATE VALVE		
	BALL VALVE		
	FLANGE CONNECTION		
	HOSE BIBB		



LOCATIONS APPROVED UNDERGROUND STRUCTURES		BENCHMARK LOCATION TOP OF TOP NUT ON HYDRANT	
SIGNED BY:	DATE:	H	
SUPV UG STRUCTURES		G	
		F	
		E	
		D	
		C	
		B	
		A	
LOCATION OF UNDERGROUND STRUCTURES AS SHOWN ARE BASED ON THE BEST INFORMATION AVAILABLE BUT NO GUARANTEE IS GIVEN THAT ALL EXISTING UTILITIES ARE SHOWN OR THAT THE GIVEN LOCATIONS ARE EXACT CONFIRMATION OF EXISTENCE AND EXACT LOCATION OF ALL SERVICES MUST BE OBTAINED FROM THE INDIVIDUAL UTILITIES BEFORE PROCEEDING		NO.	REVISIONS

		215-1511 Wellington Avenue Winnipeg, Manitoba R2M 0G4 Phone: (204) 778-7500 Fax: (204) 778-7501 www.mcw.com	
DESIGNED BY:	DCJ	CHECKED BY:	DCJ
DRAWN BY:	SM	APPROVED BY:	DCJ
HOR. SCALE:		RELEASED FOR CONSTRUCTION:	
VERTICAL:		DATE:	2020-04-15



THE CITY OF WINNIPEG
 PLANNING, PROPERTY & DEVELOPMENT DEPARTMENT
 PLANNING & URBAN DESIGN DIVISION

BROADWAY FOUNTAIN
 REFURBISHMENT

MECHANICAL
 PLAN AND SECTIONS

CITY DRAWING NUMBER: _____
 SHEET 1 OF 4
 BID NO. 250-2020

Apr 14, 2020 5:04pm
 R:\2500\2520\UG\Drawings\03_Mech\1\2520_M1.0.dwg - lbb\M1.0