

SEE DWG ABOVE
MATCHLINE 2+20

MATCHLINE 2+20
SEE DWG BELOW

MATCHLINE 3+90
FOR CONTINUATION SEE
DWG 19M-01476-00-02

Mar 20, 2020 - 10:48am
P:\2019\19M-01476-00 - 2020 Maryland Pavement Renewal\0 Drawings\03 Working Drawings\19M-01476-00 Maryland St Geometry Plan.dwg - tab:228-2020_Drawing_19M-01476-00-01-RA

METRIC

WHOLE NUMBERS INDICATE MILLIMETRES
DECIMALIZED NUMBERS INDICATE METRES



FOR TENDER PURPOSES ONLY
NOT FOR CONSTRUCTION

EXISTING	LEGEND-PLAN	PROPOSED	EXISTING	LEGEND-PLAN	PROPOSED	EXISTING	LEGEND-PROFILE	PROPOSED
---	WATER MAIN	---	⊕	IRON BAR	---	---	---	---
---	LAND DRAINAGE SEWER	---	⊕	HYDRO POLE & LIGHT STANDARD	---	---	---	---
---	WASTE WATER SEWER	---	⊕	LIGHT STANDARD OR TRAFFIC SIGNAL	---	---	---	---
---	HYDRO	---	⊕	HYDRO POLE	---	---	---	---
---	BELL/MTS	---	⊕	CURB RAMP	---	---	---	---
---	GAS	---	⊕	DETECTABLE WARNING SURFACE TILE	---	---	---	---
---	SIGNALS	---	⊕	EDGE OF SIDEWALK	---	---	---	---
○	MANHOLE	○	⊕	FENCE	---	---	---	---
□	CATCH BASIN	□	⊕	PROPERTY LINE	---	---	---	---
△	CURB INLET	△	⊕	EDGE OF ASPHALT	---	---	---	---
⊕	UTILITIES ADJUSTED	⊕	⊕	EDGE OF CONCRETE	---	---	---	---
⊕	PLUG	⊕	⊕	MODIFIED BARRIER CURB	---	---	---	---
⊕	HYDRANT	⊕	⊕	BARRIER CURB	---	---	---	---
⊕	VALVE	⊕	⊕	BARRIER CURB AND GUTTER	---	---	---	---
⊕	CURB STOP	⊕	⊕	CONC SIDEWALK	---	---	---	---
230.99	GROUND GRADE	231.000	---	CONCRETE SLAB	---	---	---	---
(231.00)	PAVEMENT GRADE	(231.000)	---	ASPHALT	---	---	---	---
⊕	ANCHOR	⊕	---	MILLED SURFACE	---	---	---	---
#111	CIVIC ADDRESS	---	---	ASPHALT JOINT REPAIR	---	---	---	---

LOCATIONS APPROVED UNDERGROUND STRUCTURES

SIGNED BY: _____ DATE: _____
SUPV U/G STRUCTURES

LOCATION OF UNDERGROUND STRUCTURES AS SHOWN ARE BASED ON THE BEST INFORMATION AVAILABLE BUT NO GUARANTEE IS GIVEN THAT ALL EXISTING UTILITIES ARE SHOWN OR THAT THE GIVEN LOCATIONS ARE EXACT CONFIRMATION OF EXISTENCE AND EXACT LOCATION OF ALL SERVICES MUST BE OBTAINED FROM THE INDIVIDUAL UTILITIES BEFORE PROCEEDING

G.B.M.	233.217
ELEV.	TOP OF HYDRANT AT THE NE CORNER OF MARYLAND STREET AND BROADWAY
H	-
G	-
F	-
E	-
D	ISSUED FOR TENDER 20200920 VM
C	ISSUED FOR UNDERGROUND STRUCTURE REVIEW 20200221 VM
B	ISSUED FOR DETAILED DESIGN REVIEW 20200219 VM
A	PRELIMINARY DESIGN REVIEW 20191220 VM
NO.	REVISIONS
DATE	BY

wsp

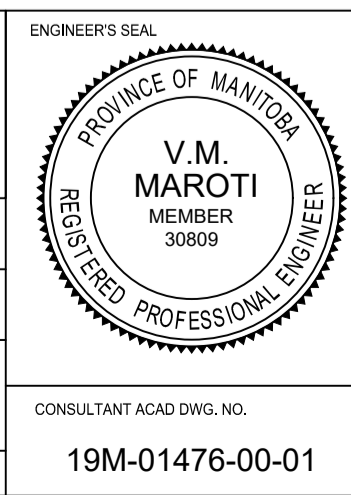
WSP Canada Group Limited
Suite 111 - 93 Lombard Ave
Winnipeg, MB R3B 3B1
t. 204.943.3178
f. 204.943.4948
www.wsp.com

DESIGNED BY: MV
DRAWN BY: SB
CHECKED BY: VM
APPROVED BY: VM

WORK SCALE: 1:250
VERTICAL: 1:10

RELEASED FOR: -
CONSTRUCTION

DATE: 2019-OCT-29



THE CITY OF WINNIPEG
PUBLIC WORKS DEPARTMENT
ENGINEERING SERVICES DIVISION

2020 MARYLAND PAVEMENT RENEWAL
MARYLAND STREET

HORIZONTAL GEOMETRY
STA. 0+35.95 TO STA. 3+90

CITY DRAWING NUMBER: P-3520-01
SHEET: 01 OF 10
BID NO.: 228-2020