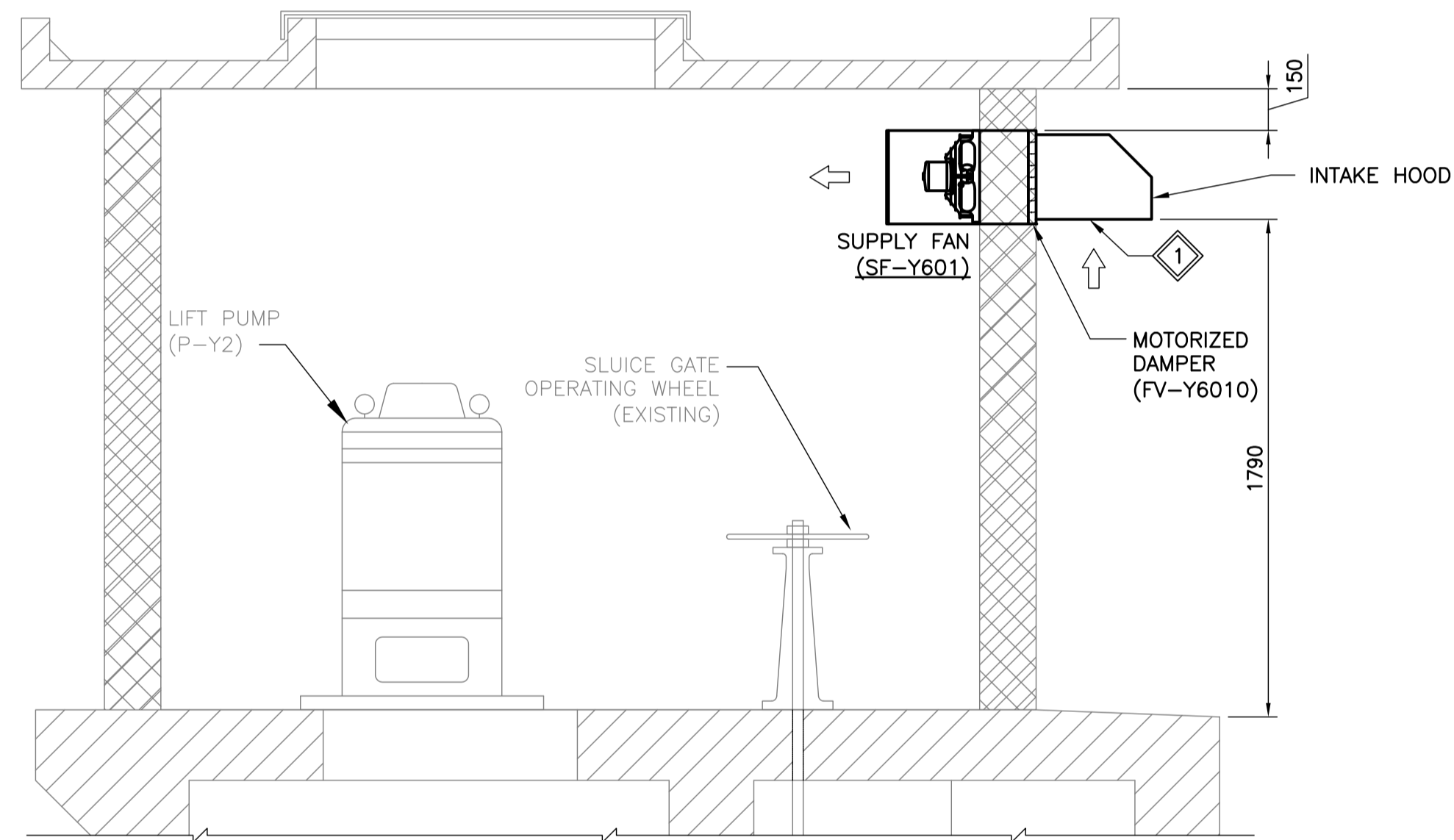


**PLAN VIEW - HURST DRAINAGE LIFT STATION**  
SCALE: 1:20



**NORTH BUILDING ELEVATION**  
SCALE: 1:30



**SECTION VIEW**  
SCALE: 1:20

**GENERAL NOTES:**

- PERFORM WORK IN ACCORDANCE WITH ALL APPLICABLE CODES AND REGULATIONS.
- REVIEW EQUIPMENT LOCATIONS WITH THE CONTRACT ADMINISTRATOR PRIOR TO INSTALLATION. EQUIPMENT LOCATIONS, AND PIPE AND DUCT ROUTING INDICATED ON THE DRAWINGS IS APPROXIMATE ONLY. CONFIRM IN THE FIELD. REROUTE DUCTWORK AND PIPING AS REQUIRED TO ELIMINATE FIELD INTERFERENCES WITH THE BUILDING STRUCTURE, ELECTRICAL, ETC. CONFIRM CHANGES WITH THE CONTRACT ADMINISTRATOR. N.P. \*\*COORDINATE ALL WORK WITH ALL SUBTRADES.\*\*
- EQUIPMENT LOCATIONS, DUCT, AND PIPE ROUTING INDICATED ON THE DRAWINGS IS APPROXIMATE ONLY. CONFIRM IN THE FIELD. REROUTE DUCTWORK AND PIPING AS REQUIRED TO ELIMINATE FIELD INTERFERENCES WITH BUILDING STRUCTURE, ELECTRICAL, ETC. CONFIRM CHANGES WITH CONTRACT ADMINISTRATOR. N.P. \*\*COORDINATE WORK WITH ALL SUBTRADES\*\*.
- WHERE DIMENSIONS ARE INDICATED FOR PIPING, DUCTWORK, DUCT SIZES, EQUIPMENT SIZES, ETC. THESE ARE FOR BIDDING PURPOSES ONLY. THE CONTRACTOR IS RESPONSIBLE TO VERIFY ALL DIMENSIONS IN THE FIELD PRIOR TO ORDERING EQUIPMENT AND COMMENCING INSTALLATION WITHOUT EXTRA CHARGES TO THE PROJECT. THE CONTRACTOR IS RESPONSIBLE TO ENSURE ALL EQUIPMENT, DUCTWORK, AND PIPING FITS IN THE SPACE AVAILABLE AND TO MAINTAIN THE GENERAL DESIGN INTENT FOR THE SYSTEMS.
- CONFORM TO SMACNA STANDARDS FOR SUPPLY AND INSTALLATION OF DUCTWORK. SEAL ALL DUCT JOINTS.
- SEAL ALL NEW FLOOR, ROOF AND WALL PENETRATIONS WATER AND AIR TIGHT.
- MAINTAIN SERVICE CLEARANCES FOR ALL NEW EQUIPMENT AS PER SUPPLIER RECOMMENDATIONS.

**KEYNOTES:**

- SUPPLY AND INSTALL A NEW SIDEWALL SUPPLY FAN SF-Y601 WITH ASSOCIATED INTAKE HOOD, REMOVABLE INSECT SCREEN, MOTORIZED DAMPER, AND WALL HOUSING.
- SUPPLY AND INSTALL A NEW DEHUMIDISTAT ME-Y601 TO CONTROL THE NEW SUPPLY FAN SF-Y601. ELECTRICAL CONTRACTOR TO PROVIDE NEW CONTROLS AND CONTROL WIRING. REFER TO DRAWING 1-0650Y-E0003-001 FOR DETAILS.

**LEGEND:**

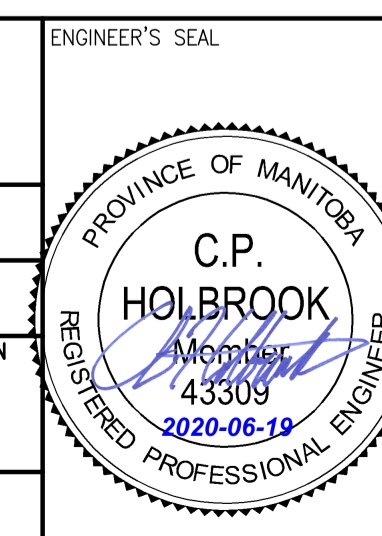
- — EXISTING EQUIPMENT
- — NEW EQUIPMENT AND DUCTWORK
- MD — MOTORIZED DAMPER
- T — THERMOSTAT
- DH — DEHUMIDISTAT

10	-	-
9	-	-
8	-	-
7	-	-
6	-	-
5	-	-
4	-	-
3	-	-
2	1-0650Y-E0003-001	ELECTRICAL - DRAINAGE LIFT STATION - POWER PLAN & DETAILS
1	1-0650A-D0001-001	COVER SHEET
NO.	DRAWING NUMBER	REFERENCE DRAWING TITLE



B.M. ELEV.	-
DESIGNED BY:	C. HOLBROOK
DRAWN BY:	J.F. SESE
SCALE:	AS NOTED
DATE:	2020-06-18
ISSUED FOR CONSTRUCTION	2020/06/18 CPH RCC
NO. REVISIONS	DATE DESIGN CHECK

<b>KGS GROUP</b>	
DESIGNED BY:	CHECKED BY:
C. HOLBROOK	R. CHEN
DRAWN BY:	APPROVED BY:
J.F. SESE	C. HOLBROOK
ISSUED FOR CONSTRUCTION BY:	DATE:
43309	2020-06-18
CONSULTANT NO.:	19-0107-005_M02



**THE CITY OF WINNIPEG**  
WATER AND WASTE DEPARTMENT

**HURST PUMPING STATION**  
STRUCTURAL REPAIRS AND DRAINAGE BUILDING UPGRADES  
MECHANICAL  
DRAINAGE LIFT STATION  
HVAC - PLAN, ELEVATIONS AND SECTION

CITY DRAWING NUMBER	SHEET	REV.	SIZE
1-0650Y-M0002	001	0	A1