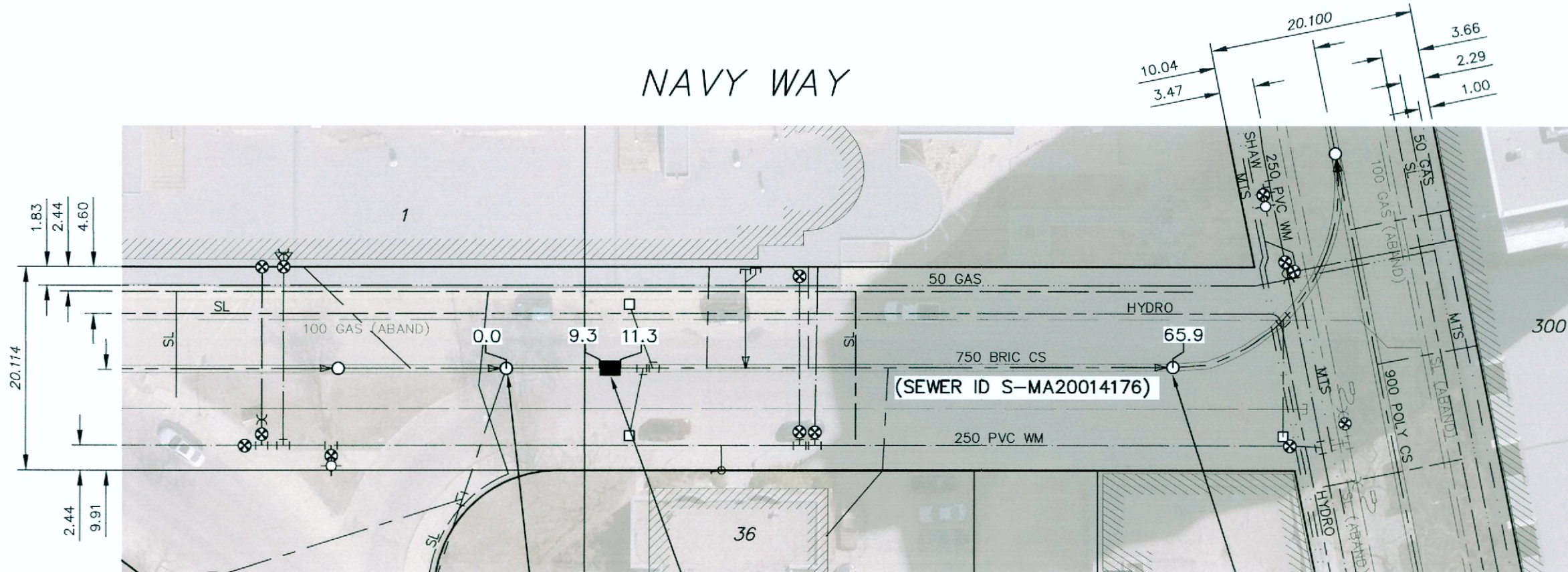


NAVY WAY



SEWER JUNCTION INFORMATION FROM SEWER VIDEO INSPECTION
SEWER ID S-MA20014176

DISTANCE FROM MH ID S-MH20012848		
DISTANCE	DIAMETER	CLOCK
5.1	150	9
5.1	150	3
10.3	150	10
10.3	150	3
13	150	9
13	150	3
20.2	150	9
20.2	150	3
27.9	150	3
27.9	150	9
30.3	200	11
35.4	150	3
35.4	150	9
42.8	150	9
42.8	150	3
50.4	150	3
50.4	150	9
58.3	150	9
58.3	150	3
65.2	150	3
65.2	150	9

S-MH20012848
RIM 230.82
INV N 226.54
INV S 226.54

2.0 OF 750 CONCRETE PIPE (C76-IV) SEWER
REPAIR C/W TWO (2) CONCRETE COLLARS
(SEE NOTE 1 & 2)

S-MH20012820
RIM 230.42
INV N 226.45
INV S 226.45

NOTES:

- SEE DRAWING D-12531 FOR CONCRETE COLLAR DETAIL OF THE TRANSITION FROM EXISTING BRICK PIPE TO NEW CONCRETE PIPE.
- RECONNECT TWO (2) EXISTING SEWER SERVICES TO THE NEW 750 CONCRETE PIPE.

FOR INDEX SEE
DWG D-12503

METRIC
WHOLE NUMBERS INDICATE MILLIMETRES
DECIMALIZED NUMBERS INDICATE METRES



WARNING

IF POWER EQUIPMENT OR EXPLOSIVES ARE TO BE USED FOR EXCAVATION ON THIS PROJECT THE CONTRACTOR MUST:

- NOTIFY THE GAS COMPANY OF THE PROPOSED LOCATION OF EXCAVATION.
- TAKE PRECAUTION TO AVOID DAMAGE TO GAS COMPANY INSTALLATIONS.

SEE PROVINCIAL REGULATION 210/72 FOR DETAILS

PROPERTY LIMITS DELINEATION

DELINEATION OF PROPERTY LIMITS AS SHOWN ON THIS DWG DOES NOT REPRESENT A "LEGAL SURVEY". KGS GROUP MAKES NO REPRESENTATION OR WARRANTY AS TO THE ACCURACY OF PROPERTY LIMITS DELINEATED ON THIS DWG, NOR ON THE DIMENSIONAL ACCURACY OF DWG FEATURES RELATIVE TO THOSE PROPERTY LIMITS.

**ES ENGINEERS
GEOSCIENTISTS
MANITOBA**

Certificate of Authorization
KGS Group
No. 245

**LOCATION APPROVED
UNDERGROUND STRUCTURES**

SUPV. U/G STRUCTURES COMMITTEE DATE

NOTE:

LOCATION OF UNDERGROUND STRUCTURES AS SHOWN ARE BASED ON THE BEST INFORMATION AVAILABLE BUT NO GUARANTEE IS GIVEN THAT ALL EXISTING UTILITIES ARE SHOWN OR THAT THE GIVEN LOCATIONS ARE EXACT. CONFIRMATION OF EXISTENCE AND EXACT LOCATION OF ALL SERVICES MUST BE OBTAINED FROM THE INDIVIDUAL UTILITIES BEFORE PROCEEDING WITH CONSTRUCTION.

B.M.
ELEV.

NO.	ISSUED FOR TENDER	DATE	BY
0	ISSUED FOR TENDER	20/04/08	<i>MJD</i>
	REVISIONS	DATE	BY

KGS GROUP

DESIGNED BY	MID	CHECKED BY	<i>JM</i>
DRAWN BY	GEL	APPROVED BY	<i>RBO</i>
SCALE:		RELEASED FOR CONSTRUCTION	
HORIZONTAL	1:500	DATE	2020 04 06
VERTICAL			

ENGINEER'S SEAL



CONSULTANT DRAWING NUMBER
D-12516



THE CITY OF WINNIPEG
WATER AND WASTE DEPARTMENT
ENGINEERING DIVISION

2020 SEWER MAIN RENEWALS
BY EXTERNAL POINT REPAIR

NAVY WAY

2ND MH NORTH OF ASSINIBOINE AVENUE TO
1ST MH NORTH OF ASSINIBOINE AVENUE

SHEET 15 OF 29

CITY DRAWING NUMBER

D-12516