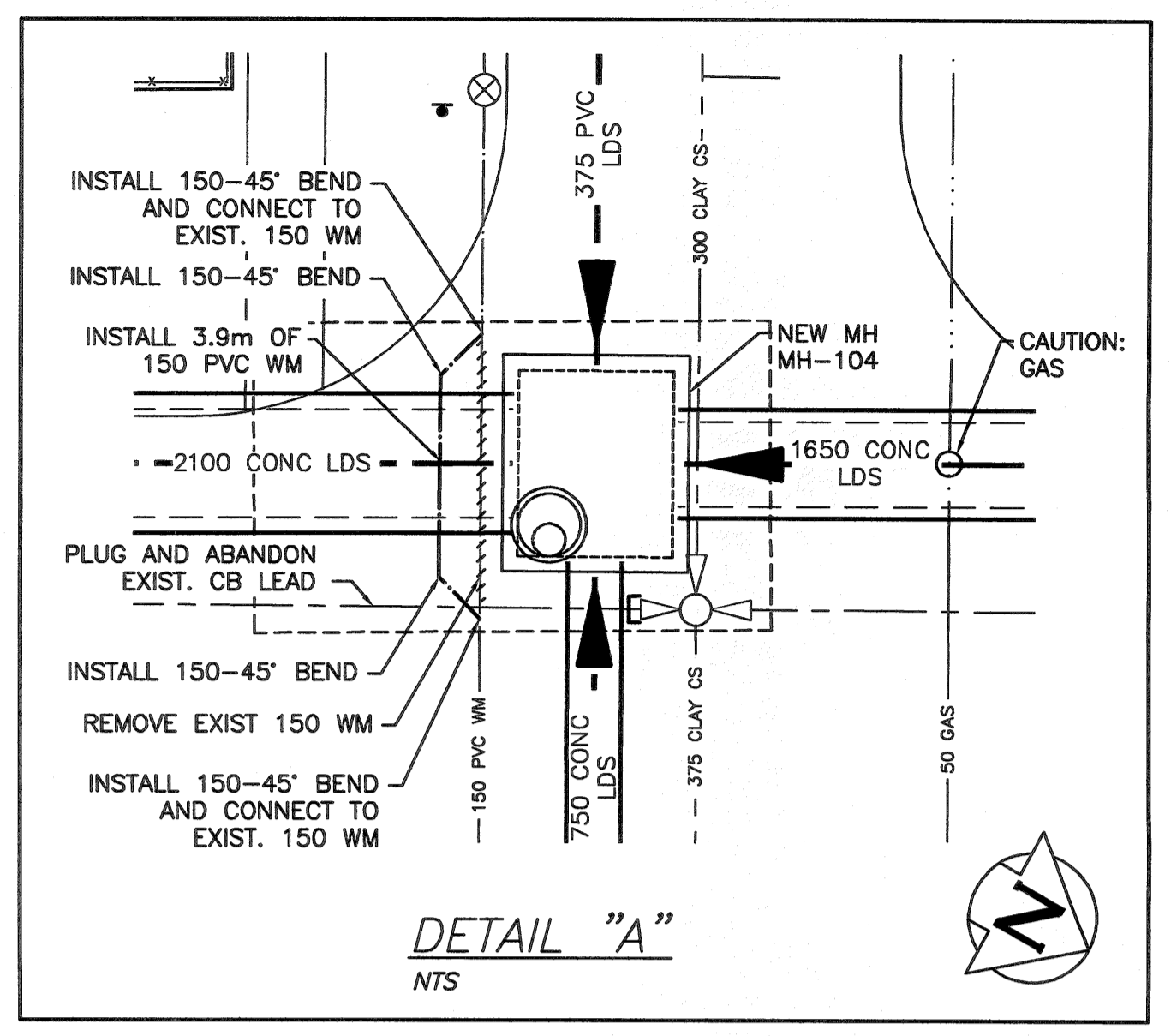
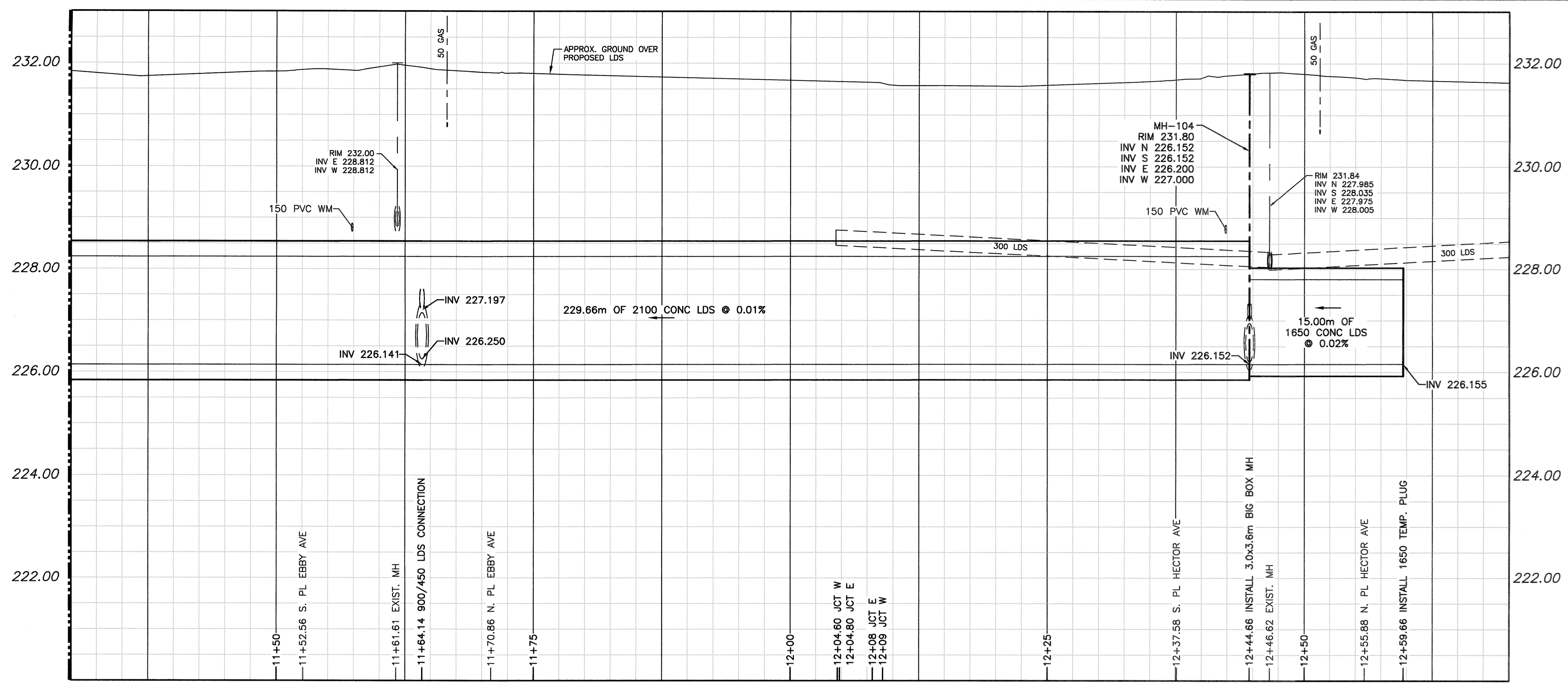
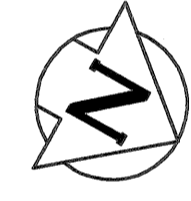
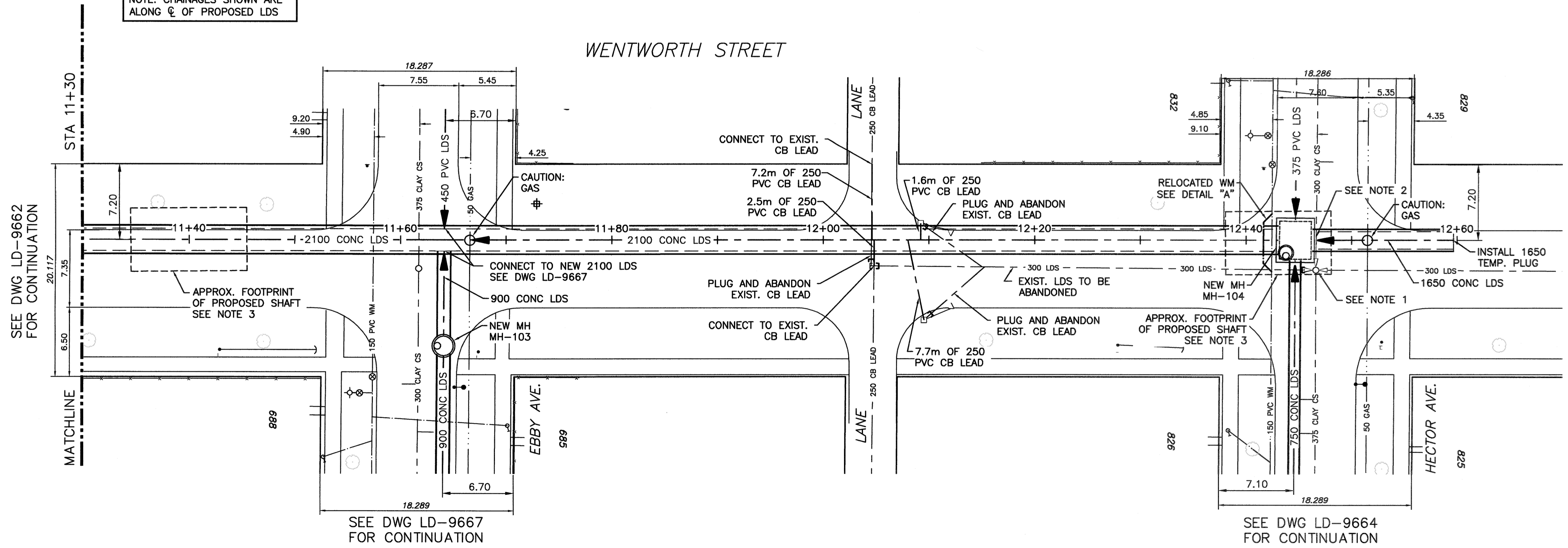


Filename C:\pw_workdir\ch2mhill_wbg\jcartez\04+5899\



NOTE: CHAINAGES SHOWN ARE ALONG C OF PROPOSED LDS

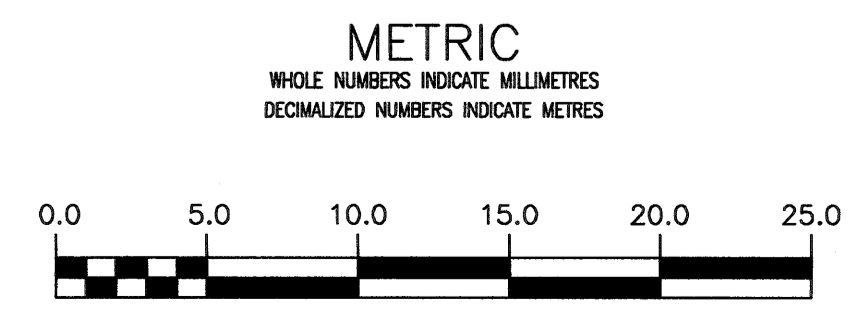
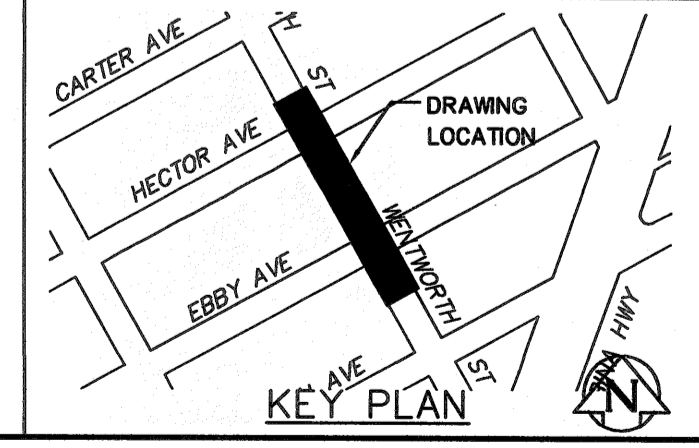
WENTWORTH STREET



NOTES:

- RENEW RISER OF EXISTING CS MANHOLE IF WITHIN LIMITS OF SHAFT EXCAVATION.
- REGRADE EXISTING CS AS REQUIRED TO MAINTAIN MINIMUM CLEARANCE BETWEEN NEW 1650 LDS AND 300 CLAY CS.
- SHAFT LOCATION AS SHOWN IS FOR PLANNING PURPOSES ONLY. ACTUAL SHAFT LOCATION IS THE RESPONSIBILITY OF THE CONTRACTOR.

ENGINEERS GEOSCIENTISTS MANITOBA
 Certificate of Authorization
 CH2M HILL Canada Ltd.
 No. 1441



PROPERTY LIMITS DELINEATION
 DELINEATION OF PROPERTY LIMITS AS SHOWN ON THIS DRAWING DOES NOT REPRESENT A "LEGAL SURVEY". JACOBS AND KGS GROUP MAKE NO REPRESENTATION OR WARRANTY AS TO THE ACCURACY OF PROPERTY LIMITS DELINEATED ON THIS DRAWING, NOR ON THE DIMENSIONAL ACCURACY OF DRAWING FEATURES RELATIVE TO THOSE PROPERTY LIMITS.

WARNING
 IF POWER EQUIPMENT OR EXPLOSIVES ARE TO BE USED FOR EXCAVATION ON THIS PROJECT THE CONTRACTOR MUST:
 1) NOTIFY THE GAS COMPANY OF THE PROPOSED LOCATION OF EXCAVATION.
 2) TAKE PRECAUTION TO AVOID DAMAGE TO GAS COMPANY INSTALLATIONS.
 SEE PROVINCIAL REGULATION 210/72 FOR DETAILS

LOCATION APPROVED UNDERGROUND STRUCTURES
 SUPV. U/G STRUCTURES COMMITTEE DATE
 NOTE:
 LOCATION OF UNDERGROUND STRUCTURES AS SHOWN ARE BASED ON THE BEST INFORMATION AVAILABLE BUT NO GUARANTEE IS GIVEN THAT ALL EXISTING UTILITIES ARE SHOWN OR THAT THE GIVEN LOCATIONS ARE EXACT. CONFIRMATION OF EXISTENCE AND EXACT LOCATION OF ALL SERVICES MUST BE OBTAINED FROM THE INDIVIDUAL UTILITIES BEFORE PROCEEDING WITH CONSTRUCTION.

B.M. ELEV.	

JACOBS KGS GROUP

DESIGNED BY: SDG
 CHECKED BY: MD
 DRAWN BY: JBC
 APPROVED BY: [Signature]
 HOR. SCALE: 1:250
 VERTICAL: 1:50
 ISSUED FOR TENDER: 20/03/12
 DATE: [Signature] 20/03/12

ENGINEER'S SEAL
 PROVINCE OF MANITOBA
 S.D. GODON
 Member
 25524
 REGISTERED PROFESSIONAL ENGINEER
 CONSULTANT DRAWING NO. C-2002

THE CITY OF WINNIPEG WATER AND WASTE DEPARTMENT

PROJECT TITLE
COCKBURN AND CALROSSIE COMBINED SEWER RELIEF WORKS - CONTRACT 6A

WENTWORTH STREET
 22.6 S EBBY AVENUE TO
 14.1 N HECTOR AVENUE

SHEET 5 OF 14
 COMPUTER FILE NAME: C-2002.dwg
 CITY DRAWING NUMBER: LD-9663