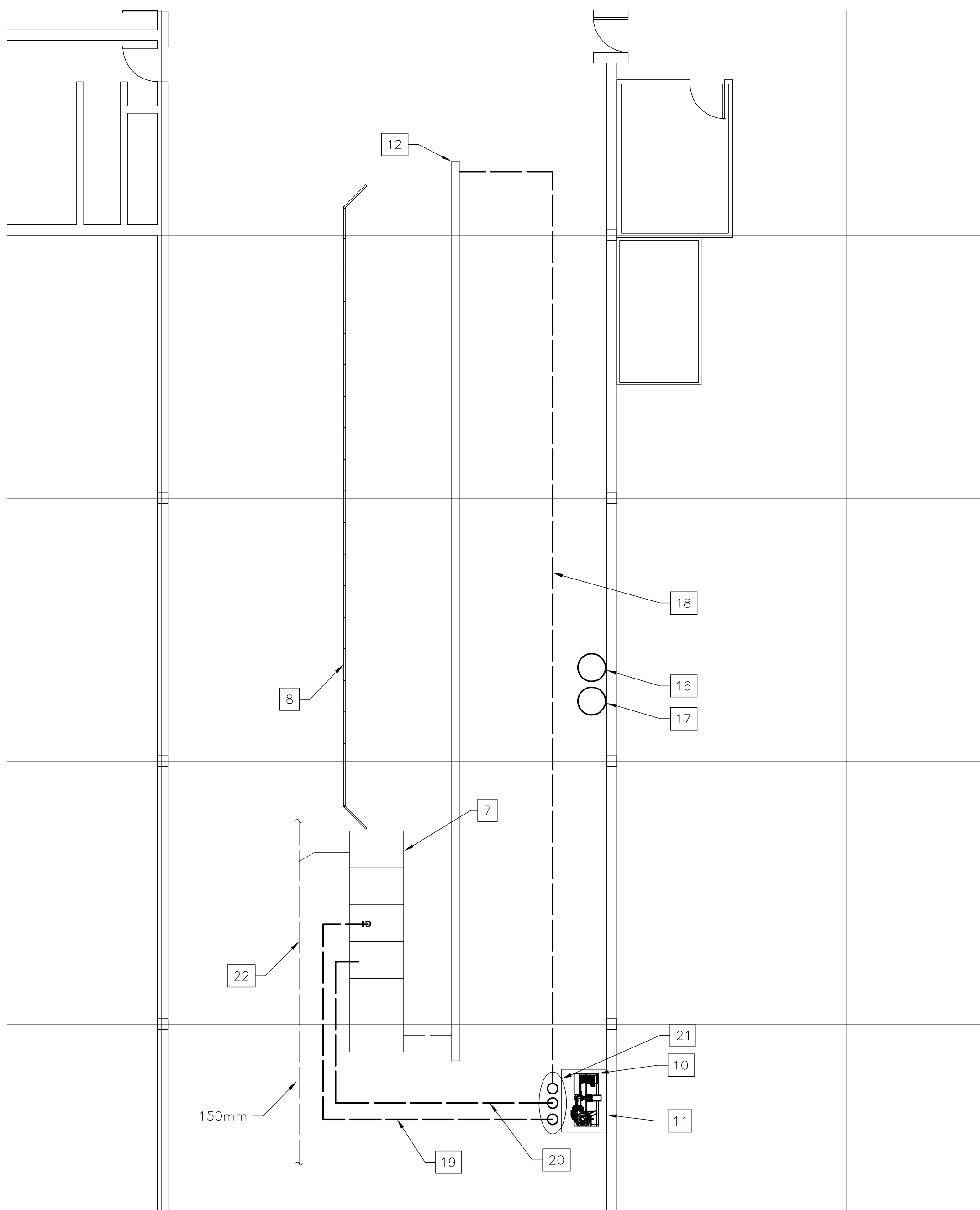


DOMESTIC WATER & COMPRESSED AIR - NEW PIPING PLAN

1:100



RECLAIM SYSTEM - NEW PIPING PLAN

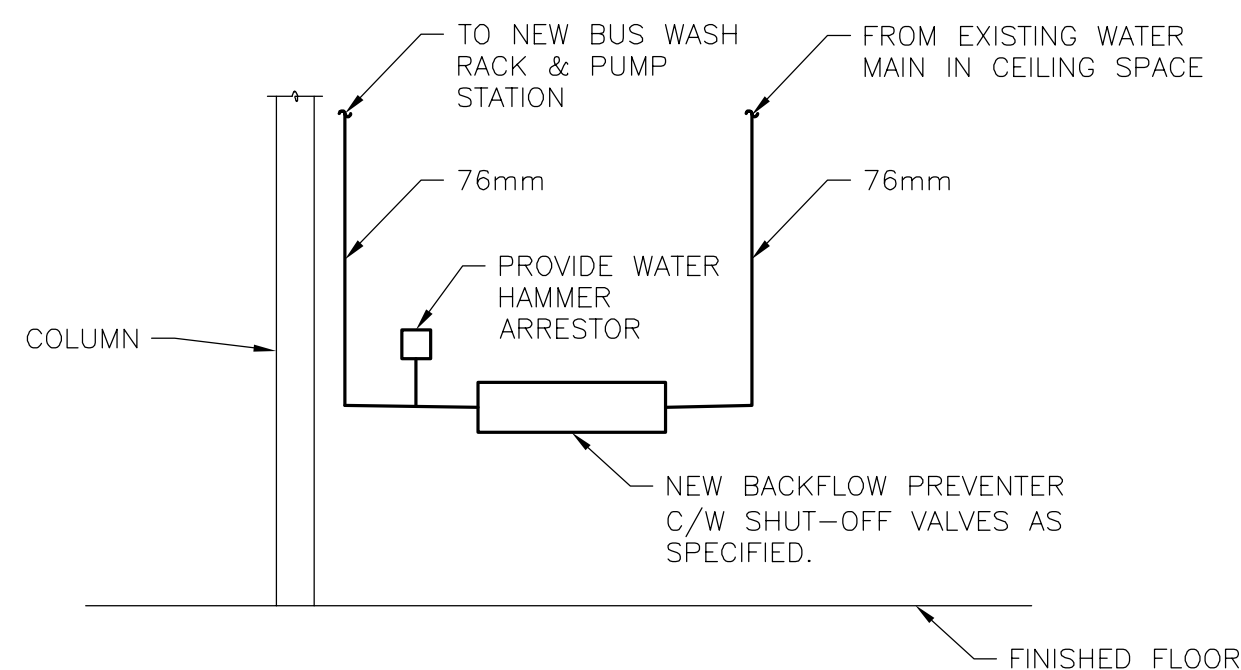
1:100

DRAWING NOTES

1. CONNECT NEW 76mm COPPER PIPE TO EXISTING MAIN AT APPROXIMATELY THIS LOCATION.
2. REFER TO DOMESTIC WATER SCHEMATIC DETAIL ON THIS SHEET.
3. PROVIDE ISOLATION VALVE AT PIPE DROP.
4. HIGH PRESSURE PIPE FROM PUMP STATION TO WASH RACK TO BE SCH 40 GALV.
5. CONNECT NEW 19mm COMPRESSED AIR PIPE TO EXISTING MAIN AT APPROXIMATELY THIS POINT.
6. PIPE DROPS DOWN ALONG WALL TO SERVE CONTROL PANELS ON PUMPS STATION & RECLAIM SYSTEM, AND BRUSH MODULE. PROVIDE PNEUMATIC CONSERVAIR MODEL S-30 INTERMEDIATE CONTROL, MAX. FLOW: 150 CFM. INLET PRESSURE: 200 PSIG, MAX. OUTLET PRESSURE: 195 PSIG. INSTALL AS PER MANUFACTURER'S INSTRUCTIONS.
7. EXISTING SEDIMENT INTERCEPTOR. SEDIMENT INTERCEPTOR HAS THREE COMPARTMENTS AND IS APPROXIMATELY 3.0m DEEP.
8. PROVIDE NEW TRANSLUCENT PLASTIC PANELS FOR EXISTING SPLASH CURTAIN FRAME.
9. LOCATION OF NEW PUMP STATION.
10. LOCATION OF NEW RECLAIM SYSTEM. MOUNT RECLAIM SYSTEM ON EXISTING HOUSE KEEPING PAD.
11. EXISTING 950mm x 1575mm HOUSE KEEPING PAD.
12. EXISTING TRENCH DRAIN.
13. NEW BUS WASH RACK.
14. NEW BLOWER.
15. LOCATION OF NEW SPEED CONTROL SYSTEM SHOULD BE LOCATED TO SUIT DRIVER VISIBILITY THRU THE WASH SYSTEM
16. LOCATION OF NEW DUAL CHEMICAL INJECTION STATION.
17. LOCATION OF NEW SINGLE CHEMICAL INJECTION STATION.
18. NEW 50mm UNDERGROUND PVC RECIRC. PIPE.
19. NEW 100mm UNDERGROUND PVC PIPE FROM SEDIMENT PIT TO RECLAIM SYSTEM.
20. NEW 50mm UNDERGROUND PVC PIPE FROM SEDIMENT PIT TO RECLAIM SYSTEM.
21. PIPE RISES FROM FLOOR SLAB TO CONNECT TO RECLAIM SYSTEM.
22. EXISTING SANITARY PIPE.

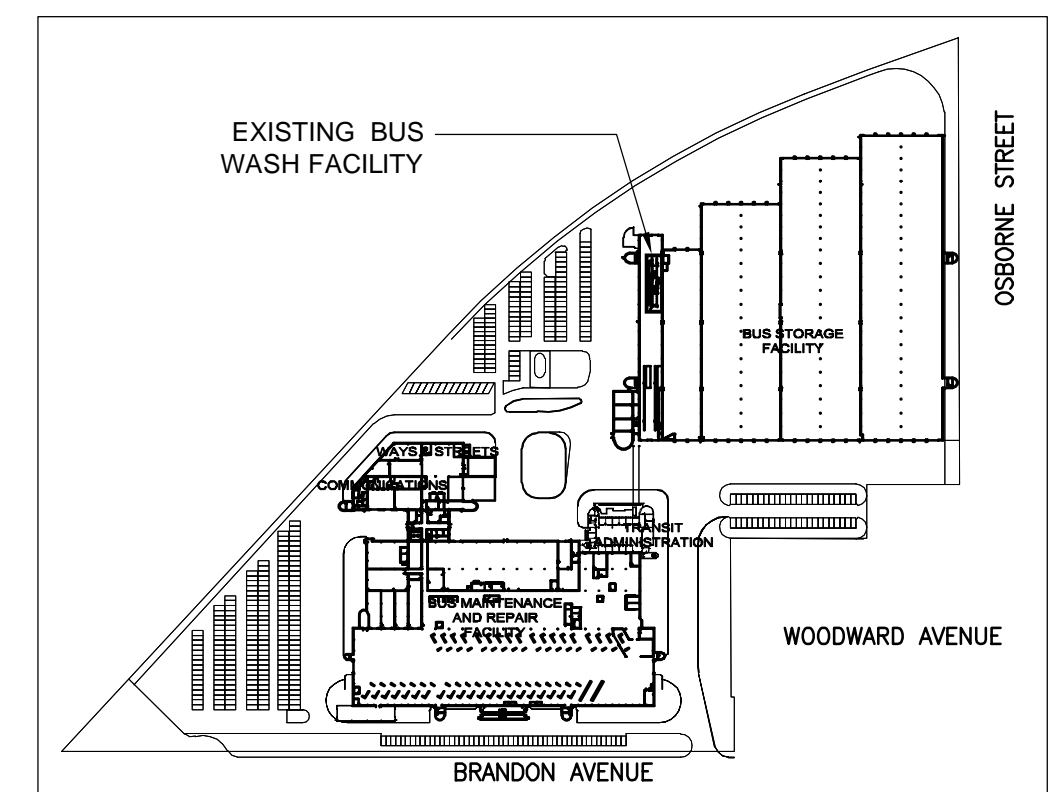
GENERAL NOTES

- STRUCTURAL STEEL
1. STRUCTURAL STEEL TO CAN/CSA G40.20/G40.21 GRADE 350W FOR ROLLED SECTIONS AND GRADE 300W FOR PLATES AND ANGLES.
 2. STRUCTURAL STEEL DESIGNED & FABRICATED IN ACCORDANCE WITH CSA S16.
 3. ANCHOR BOLTS TO CAN/CSA G40.20/G40.21 GRADE 300W.
 4. BOLTS, NUTS AND WASHERS TO ASTM A325/A325M OR SAE GR5
 5. WELDING MATERIALS TO CSA W59
 6. HOT DIP GALVANIZING TO CAN/CSA G-164 OR ASTM A.123 WITH MINIMUM ZINC COATING OF 700 G/M2/.
 7. SUBMIT SHOP DRAWINGS SIGNED & SEALED BY A PROFESSIONAL ENGINEER PRACTICING IN THE PROVINCE OF MANITOBA FOR REVIEW PRIOR TO FABRICATION
 8. ANCHORS SHALL BE CORROSION RESISTANCE.
 9. ACCEPTABLE MECHANICAL ANCHORS - HDA-PR UNDERCUT ANCHORS OR APPROVED EQUIVALENT.
 10. ACCEPTABLE CHEMICAL ANCHORS - HILTI HIT-HY 200+HAS-E B7 HDG OR APPROVED EQUIVALENT.
- TIRE GUIDE RAILS
1. TIRE GUIDE RAILS SHALL BE 175 MM (7 INCHES).
 2. GUIDE RAILS AND THEIR ANCHORS TO BE DESIGNED TO WITHSTAND A CONCENTRATED LOAD OF 22 KN APPLIED HORIZONTALLY OUTWARD AT ANY POINT.
 3. PROVIDE VENT HOLES TO THE U/S OF THE GUIDE RAILS AT JOINTS.
 4. GUIDE RAILS AND ASSEMBLIES SHALL BE HOT DIP GALVANIZED.
- WASHRACK AND BLOWER FRAMES
1. ALL FRAMES SHALL BE HOT DIP GALVANIZED.
 2. ALL FRAMES AND THEIR ANCHORS TO BE DESIGNED TO WITHSTAND ALL THE HORIZONTAL FORCES FROM THE OPERATION.



DOMESTIC WATER SCHEMATIC DETAIL

SCALE: N.T.S



KEY PLAN
NTS

LOCATION UNDERGROUND STRUCTURES SUPV. U/G STRUCTURES COMMITTEE DATE NOTE: LOCATION OF UNDERGROUND STRUCTURES AS SHOWN ARE BASED ON THE BEST INFORMATION AVAILABLE, BUT NO GUARANTEE IS GIVEN THAT ALL EXISTING UTILITIES ARE SHOWN OR THAT THE GIVEN LOCATIONS ARE EXACT. CONFIRMATION OF EXISTENCE AND EXACT LOCATION OF ALL SERVICES MUST BE OBTAINED FROM THE INDIVIDUAL UTILITIES BEFORE PROCEEDING WITH CONSTRUCTION.	APPROVED STRUCTURES DATE	B.M. ELEV.	DESIGNED BY: EP DRAWN BY: ERP CHECKED BY: TKD APPROVED BY: PDT HOR. SCALE: NOTED VERTICAL		ENGINEER'S SEAL CONSULTANT PROJECT NO. 199071	THE CITY OF WINNIPEG TRANSIT DEPARTMENT	FORT ROUGE GARAGE BUS WASH RACK REPLACEMENT, WINNIPEG, MANITOBA	CITY DRAWING NUMBER: P-XXXX- ---- SHEET 1 OF 1 CONSULTANT DRAWING NUMBER: M2
1 ISSUED FOR TENDER NO. REVISIONS	20/03/27 DATE	EP BY	2019-02-11 DATE	RELEASED FOR CONSTRUCTION DATE	199071	MECHANICAL - NEW FLOOR PLANS	M2	

CA PROJECTWISE WORKING DIRECTORY PROJECTS 2019 WSK DM5031921199071-07-MECH-DES1.DWG