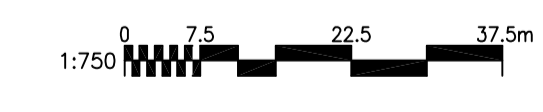
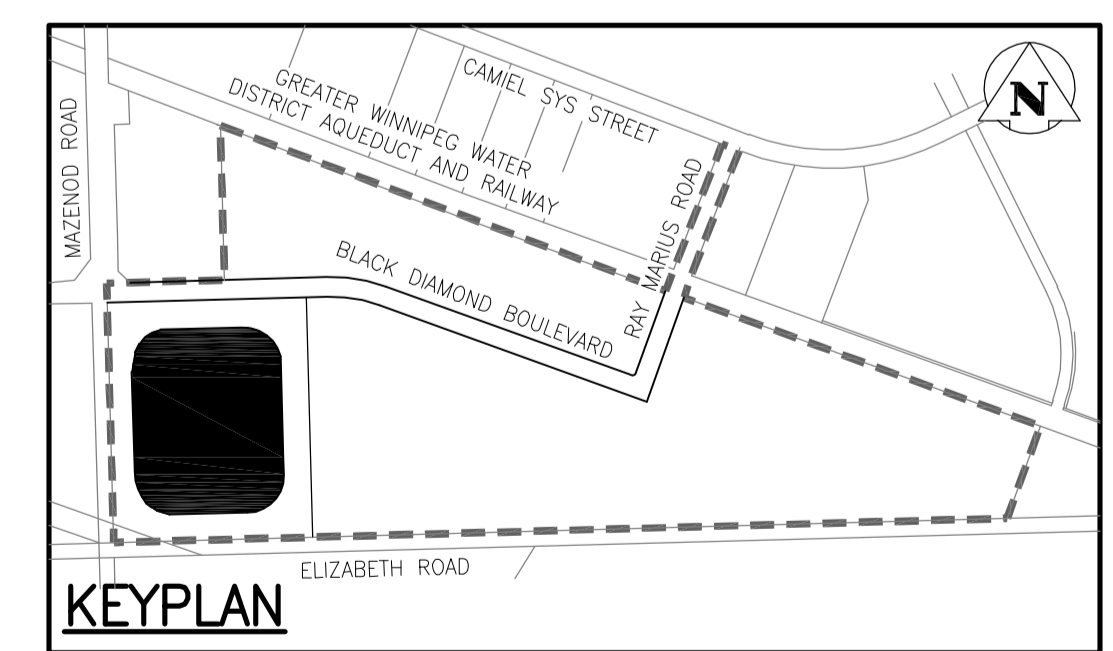


BENCHMARK: N.W. Cor. of Mazenod Rd. & G.W.W.D. R.O.W., 19 mm dia. x 4.6 m I.B. in Valve Box, 3.0 m W. of W.L. of Mazenod Rd. & 4.0 m N. of N. rail of tracks in G.W. W.D. R.O.W.



ENGINEERS GEOSCIENTISTS MANITOBA
 Certificate of Authorization
 Stantec Consulting Ltd.
 No. 1301



WARNING

IF POWER EQUIPMENT OR EXPLOSIVES ARE TO BE USED FOR EXCAVATION ON THIS PROJECT THE CONTRACTOR MUST:
 1) NOTIFY THE GAS COMPANY OF THE PROPOSED LOCATION OF EXCAVATION.
 2) TAKE PRECAUTION TO AVOID DAMAGE TO GAS COMPANY INSTALLATIONS.
 SEE PROVINCIAL REGULATION 140/92 FOR DETAILS

METRIC

WHOLE NUMBERS INDICATE MILLIMETRES
 DECIMALIZED NUMBERS INDICATE METRES

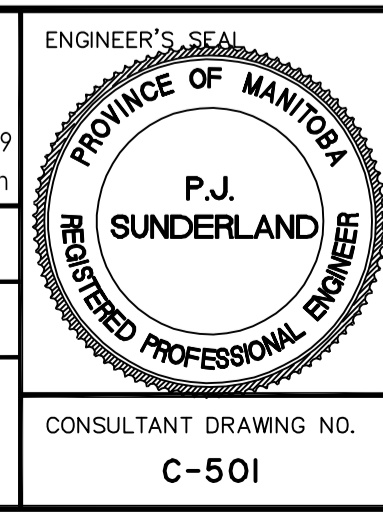
150_WM	WATERMAIN	150_WM	HYDRO	
+	HYDRANT	+	M.T.S.	
⊗	VALVE	⊗	CONCRETE	
300_LDS	LAND DRAINAGE SEWER	300_LDS	ASPHALT	
250_WWS	WASTE WATER SEWER	250_WWS	SIDEWALK	
●	MANHOLE	●	PROPERTY LINE	
■	CATCH BASIN	■	SURVEY BAR	
▽	CURB INLET	▽	DITCH	
+	JUNCTIONS	+	ROAD ELEVATION	(32.231)
—	CULVERT	—		
—	GAS	—		
EXISTING	LEGEND-PLAN	PROPOSED	EXISTING	LEGEND-PLAN
			PROPOSED	

LOCATION APPROVED UNDERGROUND STRUCTURES
 SUPV. U/G STRUCTURES COMMITTEE DATE
 NOTE:
 LOCATION OF UNDERGROUND STRUCTURES AS SHOWN ARE BASED ON THE BEST INFORMATION AVAILABLE BUT NO GUARANTEE IS GIVEN THAT ALL EXISTING UTILITIES ARE SHOWN OR THAT THE GIVEN LOCATIONS ARE EXACT. CONFIRMATION OF EXISTENCE AND EXACT LOCATION OF ALL SERVICES MUST BE OBTAINED FROM THE INDIVIDUAL UTILITIES BEFORE PROCEEDING WITH CONSTRUCTION.

B.M. 32-005	ELEV. 231.677		
NO.	REVISIONS	DATE	BY
1	SUBMITTED FOR CITY REVIEW	20.03.27	P.J.S.

Stantec
 500 - 311 Portage Avenue, Winnipeg M8 Canada R3B 2B9
 Tel. 204.489.5900 Fax. 204.453.9012 www.stantec.com

DESIGNED BY	P.J.S.	CHECKED BY	J.D.K.
DRAWN BY	L.D.	APPROVED BY	P.J.S.
HOR. SCALE:	1:750	RELEASED FOR CONSTRUCTION:	
VERTICAL:		DATE	2020 .02 .18



THE CITY OF WINNIPEG
 Winnipeg

ST. BONIFACE INDUSTRIAL PARK - PH 2 - STAGE 2&3
RETENTION POND AND OUTFALL DETAILS

SHEET II OF II
 CAD FILE DRAWING NUMBER 09351C-501_PH2-2&3.DWG
 CITY DRAWING NUMBER

CONSULTANT DRAWING NO. C-501

VA:1689444\A1689351\0300_dfm\c\1689351c-501_ph2-2&3.dwg
 2020/03/26 4:05 PM By: Derek_Labonde