

BENCHMARK: N.W. Cor. of Mazenod Rd. & G.W.W.D. R.O.W., 19 mm dia. x 4.6 m I.B. in Valve Box, 3.0 m W. of W.L. of Mazenod Rd. & 4.0 m N. of N. rail of tracks in G.W. W.D. R.O.W.

ENGINEERS GEOSCIENTISTS MANITOBA
 Certificate of Authorization
 Stantec Consulting Ltd.
 No. 1301

WARNING

IF POWER EQUIPMENT OR EXPLOSIVES ARE TO BE USED FOR EXCAVATION ON THIS PROJECT THE CONTRACTOR MUST:
 1) NOTIFY THE GAS COMPANY OF THE PROPOSED LOCATION OF EXCAVATION.
 2) TAKE PRECAUTION TO AVOID DAMAGE TO GAS COMPANY INSTALLATIONS.
 SEE PROVINCIAL REGULATION 140/92 FOR DETAILS

METRIC

WHOLE NUMBERS INDICATE MILLIMETRES
 DECIMALIZED NUMBERS INDICATE METRES

	CATCH BASIN		ROAD ELEVATION		(32.23)
	CURB INLET		LOT ELEVATION		32.23
	JUNCTIONS		DITCH ELEVATION		(32.00)
	CULVERT				
	CONCRETE				
	ASPHALT				
	SIDEWALK				
	PROPERTY LINE				
	SURVEY BAR				
	DITCH				
	EXISTING		LEGEND-PLAN		PROPOSED

LOCATION APPROVED UNDERGROUND STRUCTURES

SUPV. U/G STRUCTURES COMMITTEE DATE
 NOTE:
 LOCATION OF UNDERGROUND STRUCTURES AS SHOWN ARE BASED ON THE BEST INFORMATION AVAILABLE BUT NO GUARANTEE IS GIVEN THAT ALL EXISTING UTILITIES ARE SHOWN OR THAT THE GIVEN LOCATIONS ARE EXACT. CONFIRMATION OF EXISTENCE AND EXACT LOCATION OF ALL SERVICES MUST BE OBTAINED FROM THE INDIVIDUAL UTILITIES BEFORE PROCEEDING WITH CONSTRUCTION.

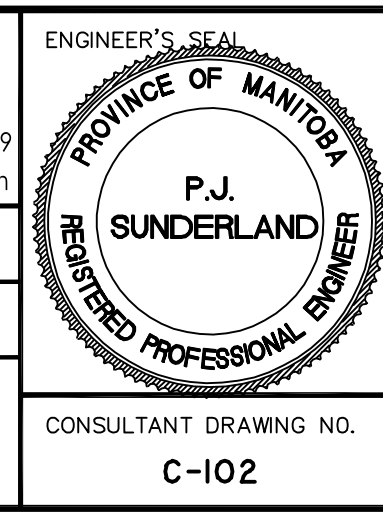
B.M. 32-005	ELEV. 231.677
1	SUBMITTED FOR CITY REVIEW
NO.	REVISIONS
	DATE 2020 .02 .18
	BY P.J.S.

Stantec
 500 - 311 Portage Avenue, Winnipeg MB Canada R3B 2B9
 Tel. 204.489.5900 Fax. 204.453.9012 www.stantec.com

DESIGNED BY: P.J.S. CHECKED BY: J.D.K.
 DRAWN BY: L.D. APPROVED BY: P.J.S.

HOR. SCALE: 1:1500
 VERTICAL: RELEASED FOR CONSTRUCTION: DATE

CONSULTANT DRAWING NO. C-102



THE CITY OF WINNIPEG
 Winnipeg

ST. BONIFACE INDUSTRIAL PARK - PH 2 - STAGE 2&3
LOT GRADE PLAN

SHEET 3 OF 11
 CAD FILE DRAWING NUMBER 09351C-102_PH2-2&3.DWG
 CITY DRAWING NUMBER

VA:1680\p4\A\1680351\0300_dfm\c\0302_sheret_files\02_civil\phase_2-stage_2&3 (2017)dwg\09351c-102_ph2-2&3.dwg
 2020/03/26 4:03 PM By: Derek Labonde