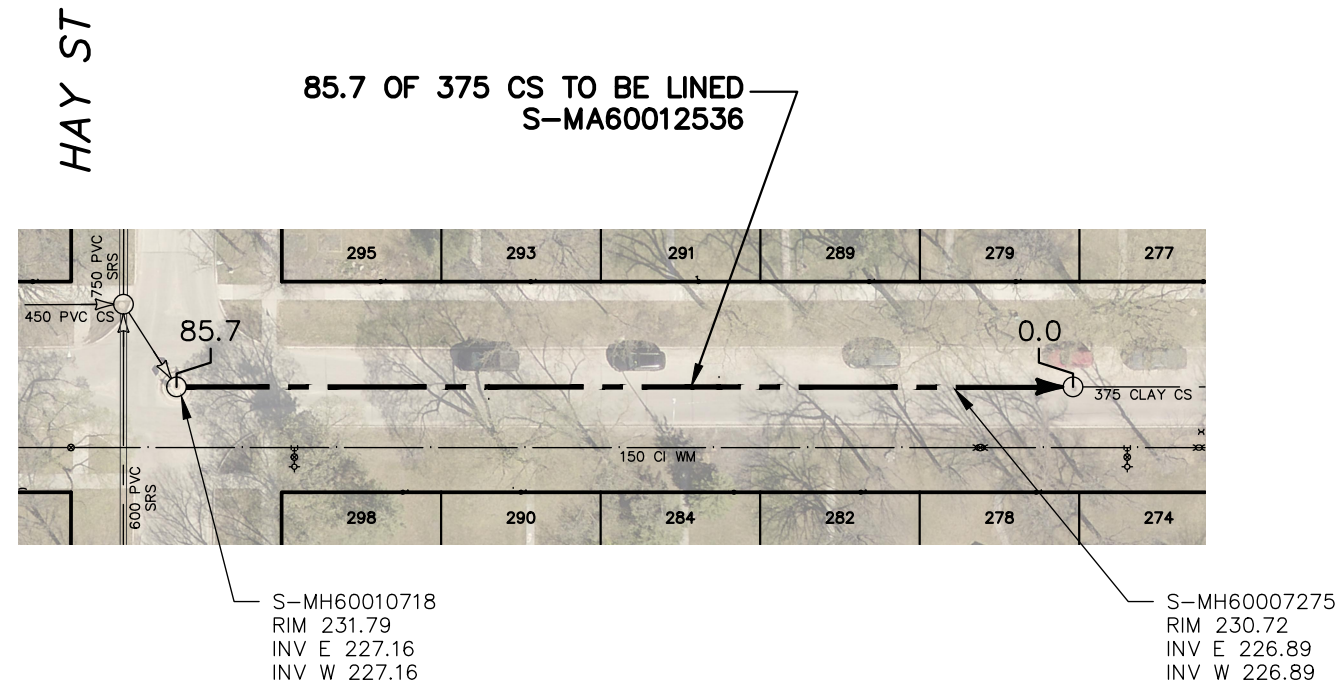




ASHLAND AVENUE



SEWER JUNCTION INFORMATION FROM SEWER VIDEO INSPECTION		
SEWER ID S-MA60012536		
DISTANCE FROM MH ID S-MH60010718		
DISTANCE	DIAMETER	CLOCK
10.3	100	1
22.4	150	10
23.3	150	2
28.9	150	2
35.0	150	2
36.8	150	10
37.8	150	2
52.1	150	10
53.0	150	2
67.4	150	10
68.4	150	2
82.4	150	10

S-MH60010718
RIM 231.79
INV E 227.16
INV W 227.16

S-MH60007275
RIM 230.72
INV E 226.89
INV W 226.89

WARNING

IF POWER EQUIPMENT OR EXPLOSIVES ARE TO BE USED FOR EXCAVATION ON THIS PROJECT THE CONTRACTOR MUST:

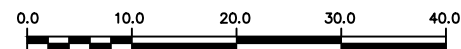
- 1) NOTIFY THE GAS COMPANY OF THE PROPOSED LOCATION OF EXCAVATION.
- 2) TAKE PRECAUTION TO AVOID DAMAGE TO GAS COMPANY INSTALLATIONS.

SEE PROVINCIAL REGULATION 210/72 FOR DETAILS

FOR INDEX SEE
12443

METRIC

WHOLE NUMBERS INDICATE MILLIMETRES
DECIMALIZED NUMBERS INDICATE METRES



LOCATION APPROVED UNDERGROUND STRUCTURES

SUPV. U/G STRUCTURES COMMITTEE DATE

NOTE:

LOCATION OF UNDERGROUND STRUCTURES AS SHOWN ARE BASED ON THE BEST INFORMATION AVAILABLE BUT NO GUARANTEE IS GIVEN THAT ALL EXISTING UTILITIES ARE SHOWN OR THAT THE GIVEN LOCATIONS ARE EXACT. CONFIRMATION OF EXISTENCE AND EXACT LOCATION OF ALL SERVICES MUST BE OBTAINED FROM THE INDIVIDUAL UTILITIES BEFORE PROCEEDING WITH CONSTRUCTION.

B.M. ELEV.	NO.	REVISIONS	DATE	BY

DESIGNED BY	SC	CHECKED BY	SC
DRAWN BY	RS	APPROVED BY	KZ
SCALE:		RELEASED FOR CONSTRUCTION	
HORIZONTAL	1:750		
VERTICAL			
DATE	2020 04 23	DATE	2020-04-22
PLOT DATE: 2020 04 23			

ENGINEER'S SEAL

ORIGINAL SIGNED BY
S.R.J. COURNOYER
2020/04/17

CONSULTANT DRAWING NUMBER
-



THE CITY OF WINNIPEG

WATER AND WASTE DEPARTMENT
ENGINEERING DIVISION

2020 SEWER MAIN RENEWALS
BY CIPP LINING
ASHLAND AVENUE
MH AT HAY STREET TO
1ST MH E OF HAY STREET

SHEET **4** OF **60**
CITY DRAWING NUMBER
12445