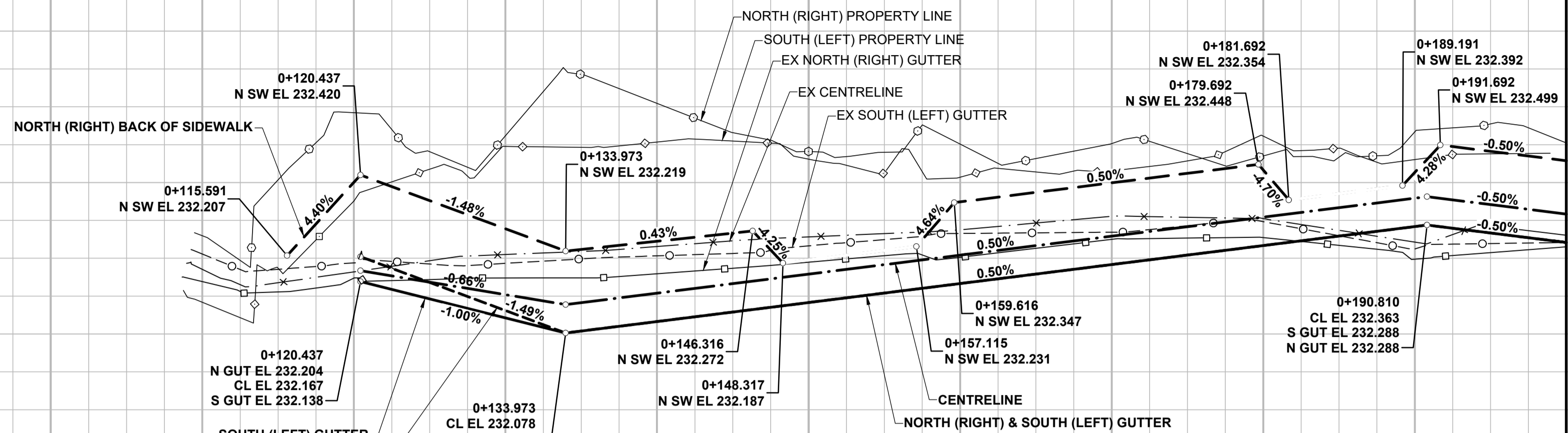


233.20
232.80
232.40
232.00
231.60
231.20

233.20
232.80
232.40
232.00
231.60
231.20



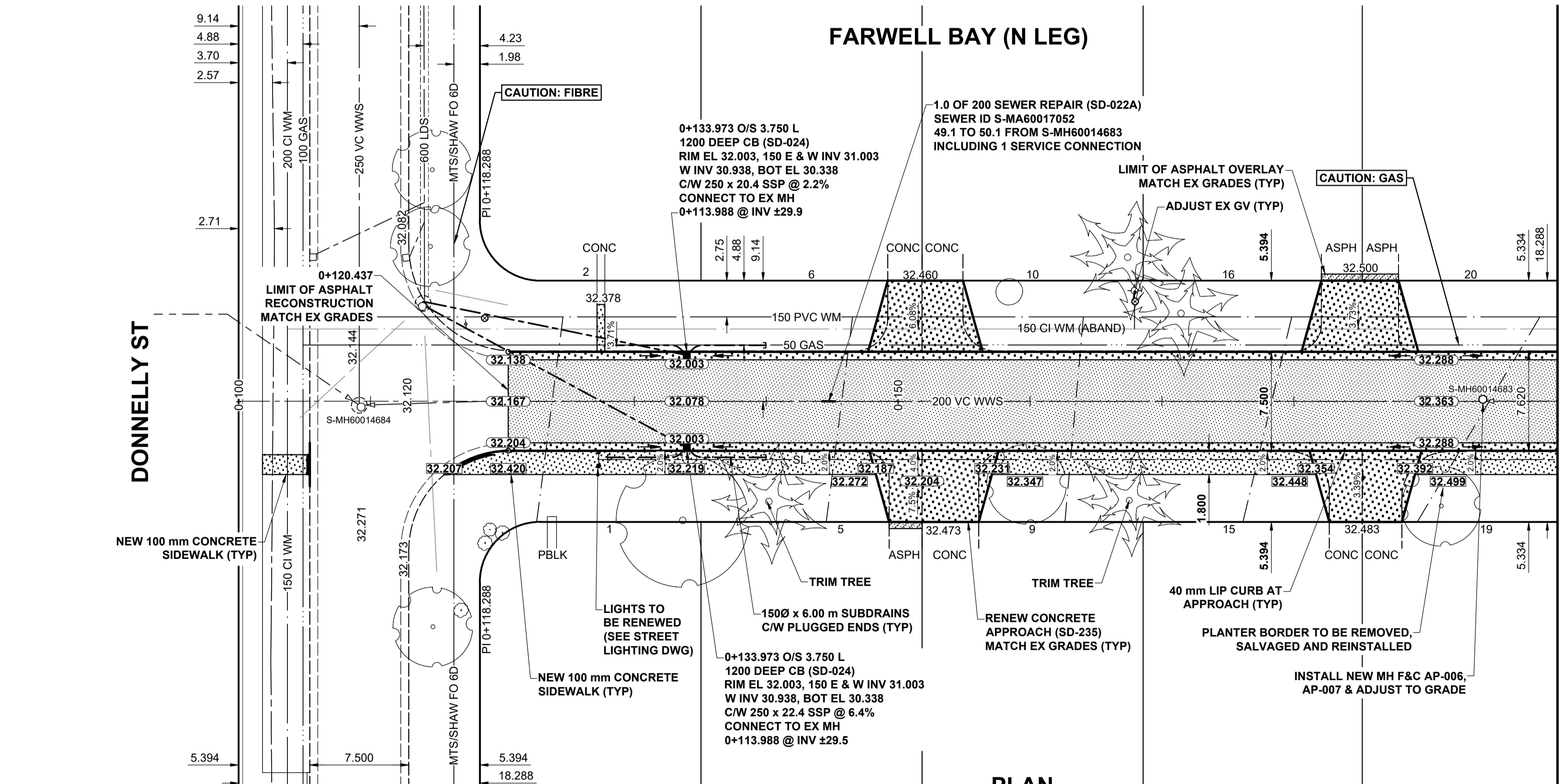
PROFILE

VERTICAL SCALE: 1:10
0 0.1 0.2 0.3 0.4 0.5m

231.20
CHAINAGE
ALONG C/P
PAVEMENT

NOTES

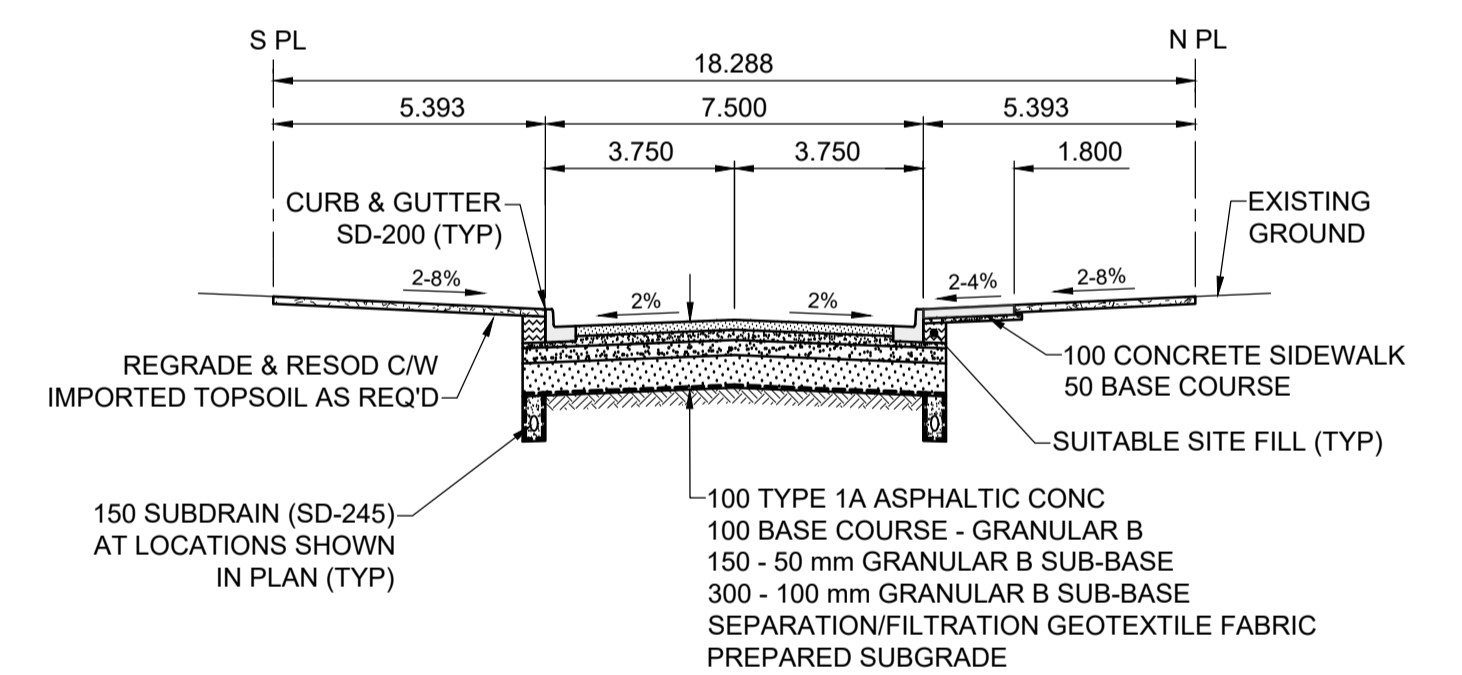
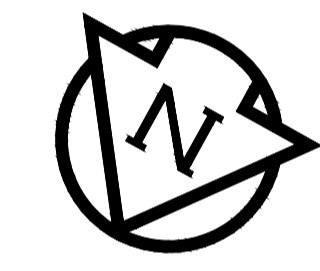
- ADJUST MH AND CB RIMS TO NEW GRADES.
- LAMP STANDARDS, HYDRO POLES, AND ANCHORS THAT REQUIRE TEMPORARY SUPPORT, REMOVAL OR REPLACEMENT, TO BE DONE SO AT THE EXPENSE OF THE CONTRACTOR AS NECESSARY.
- CONTRACTOR TO REGRADE/RENEW EXISTING PRIVATE SIDEWALKS TO LIMITS AS SHOWN. SIDEWALKS TO BE RENEWED WITH CONCRETE UNLESS NOTED OTHERWISE.
- CONTRACTOR TO TAKE PRECAUTIONARY STEPS TO PROTECT EXISTING TREES WITHIN THE LIMITS OF CONSTRUCTION FROM DAMAGE FROM CONSTRUCTION ACTIVITIES AS OUTLINED IN THE SPECIFICATIONS.
- CONTRACTOR TO CONFIRM THE LOCATION OF ALL UTILITIES/SERVICES IN THE FIELD PRIOR TO CONSTRUCTION.
- CB SD-023 & SD-024 OFFSETS ARE DIMENSIONED TO BOC. CB SD-025 OFFSETS ARE DIMENSIONED O/C.
- IN GENERAL, PAVEMENT AND SIDEWALK AREAS TO BE REMOVED. MATCH RECONSTRUCTION LIMITS.
- REFER TO TENDER FOR DETAILS REGARDING TRAFFIC MANAGEMENT.
- EXISTING LONG WATER SERVICES TO BE INSULATED (SD-018). REFER TO TENDER FOR FURTHER REQUIREMENTS AND AS NOTED IN PLAN.
- ALL COSTS, MATERIALS AND LABOR ASSOCIATED WITH THE RESTORATION OF THE CATHODIC PROTECTED WATERMAIN WILL BE RESPONSIBILITY OF THE CONTRACTOR.
- MODIFIED BARRIER CURB TO BE USED AT ALL INTERSECTION RADII.
- ADJUST EXISTING WATER VALVES AND WATER SERVICE CURB STOPS TO GRADE.
- ADD 200.000 m TO ABBREVIATED ELEVATIONS TO OBTAIN GEODETIC ELEVATIONS.



FARWELL BAY (N LEG)

PLAN

SCALE: 1:250
0 5 10 15m



TYPICAL PAVEMENT SECTION - FARWELL BAY (N LEG)

ASPHALT PAVEMENT STRUCTURE
SCALE: NTS

METRIC
WHOLE NUMBERS INDICATE MILLIMETRES
DECIMALIZED NUMBERS INDICATE METRES

EXISTING	NEW	EXISTING	NEW	EXISTING	NEW	EXISTING	NEW
						NOTE:	
						LOCATION OF UNDERGROUND STRUCTURES AS SHOWN ARE BASED ON THE BEST INFORMATION AVAILABLE BUT NO GUARANTEE IS GIVEN THAT ALL EXISTING UTILITIES ARE SHOWN OR THAT THE GIVEN LOCATIONS ARE EXACT. CONFIRMATION OF EXISTENCE AND EXACT LOCATION OF ALL SERVICES MUST BE OBTAINED FROM THE INDIVIDUAL UTILITIES BEFORE PROCEEDING WITH CONSTRUCTION.	

NO.	REVISIONS	DATE	BY
B	ISSUED FOR TENDER	20/04/20	GFC
A	ISSUED FOR REVIEW	20/03/13	GFC

DESIGNED BY	GFC	CHECKED BY	RPB
DRAWN BY	KMB	APPROVED BY	BWB
RELEASED FOR CONSTRUCTION		DATE	

PROFESSIONAL'S SEAL
PRELIMINARY DRAWING
NOT TO BE USED FOR CONSTRUCTION
CONSULTANT FILE NAME
1905658-Farwell_Maybank-PP-01.dwg

THE CITY OF WINNIPEG
PUBLIC WORKS DEPARTMENT
ENGINEERING DIVISION

2020 LOCAL STREET RENEWAL PROGRAM
FARWELL BAY (N LEG)
DONNELLY ST TO DONNELLY ST
ASPHALT RECONSTRUCTION
PAVING AND GRADING
DONNELLY ST TO STA 0+200

CITY DRAWING NUMBER: N/A
SHEET 10 OF 20
DRAWING NUMBER: 10

TENDER No. 19-2020

ENGINEERS GEOSCIENTISTS MANITOBA
Certificate of Authorization
MORRISON HERSHFIELD
No. 1736