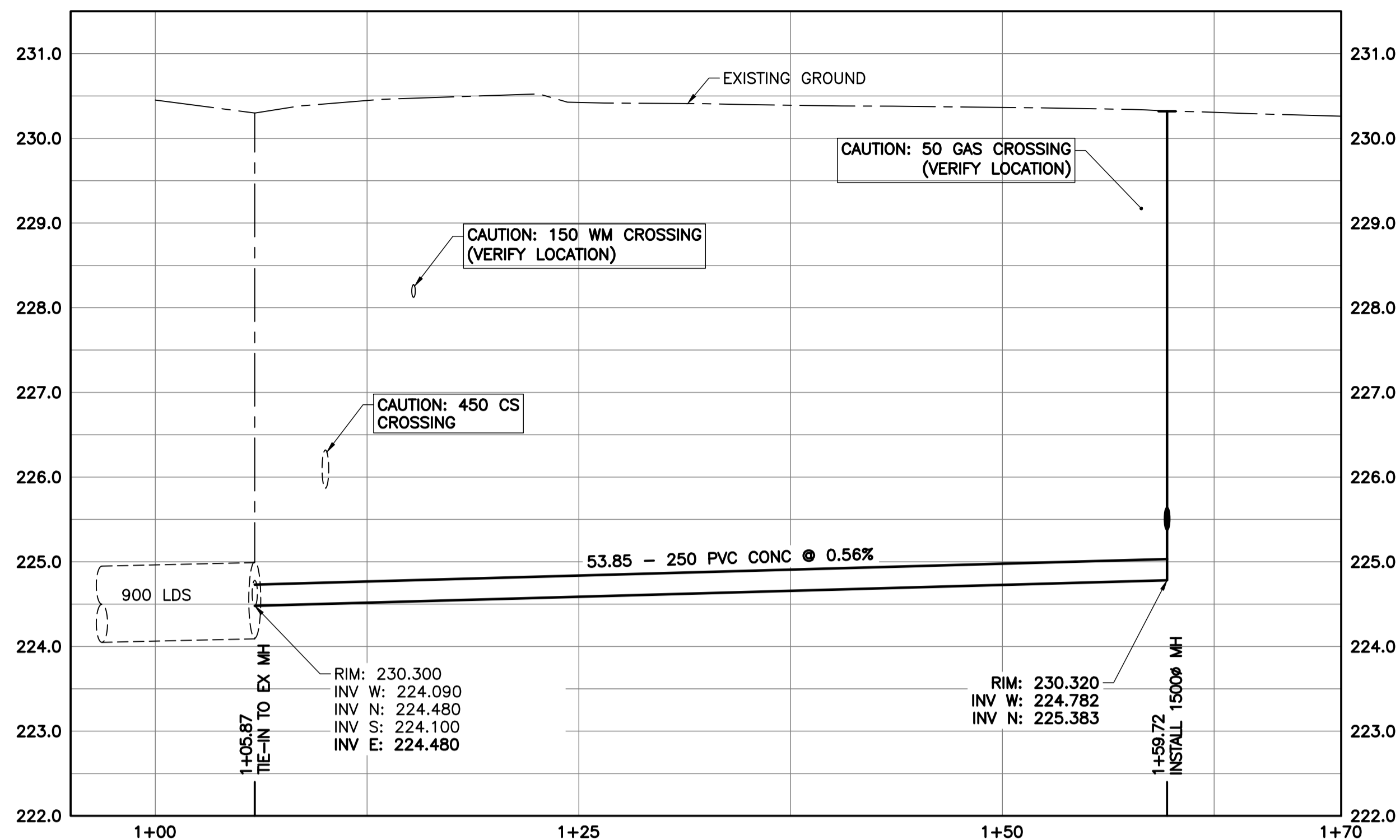
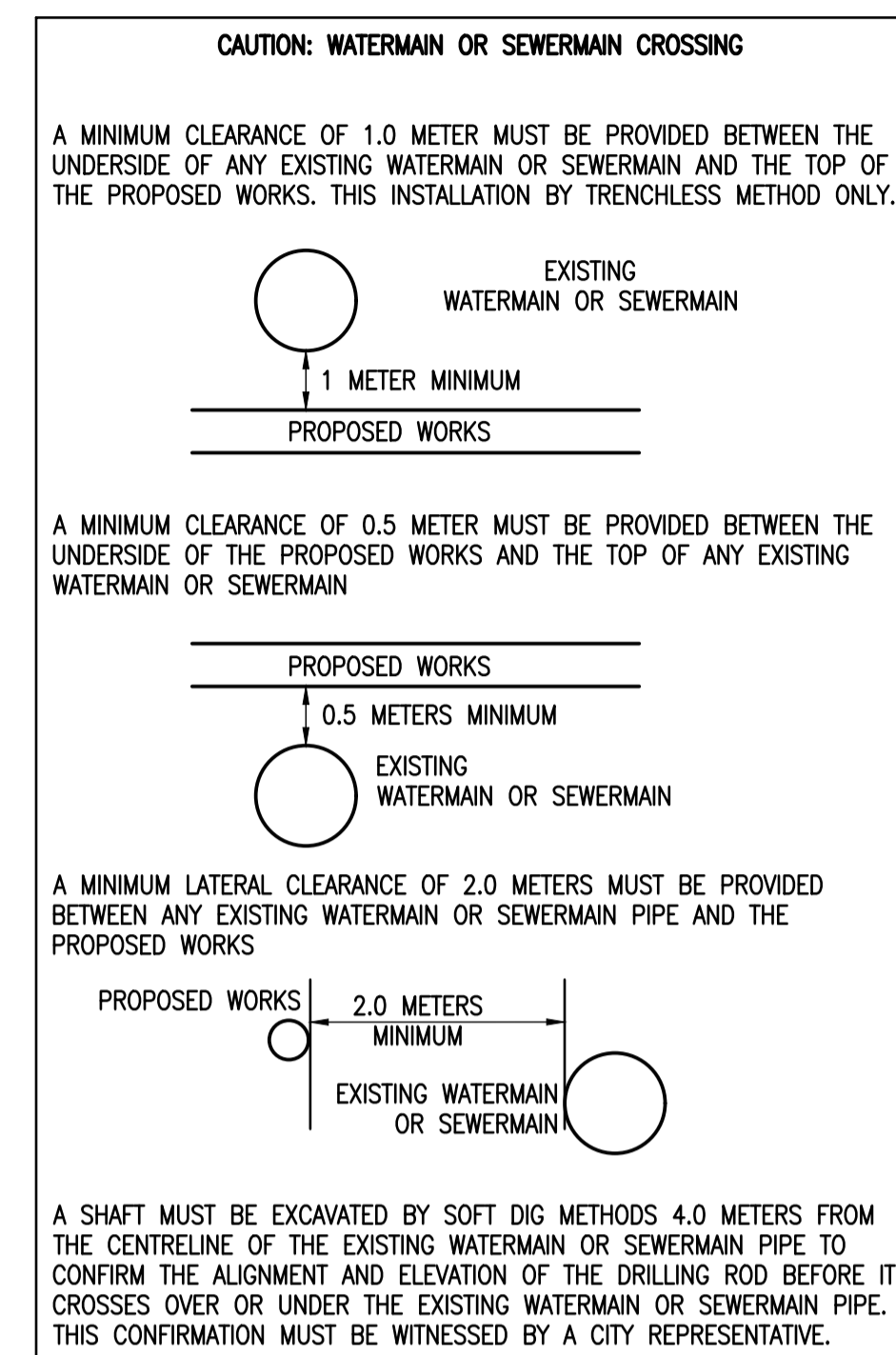


File: C:\Projects\2019\18-0107-016-Alleys - Tab.C803 Plotted By: gloewen 20/03/19 [Thu 11:28am]
 At: C:\Users\jg\Documents\18-0107-016-Alleys - Tab.C803.dwg SCALE: 1:1



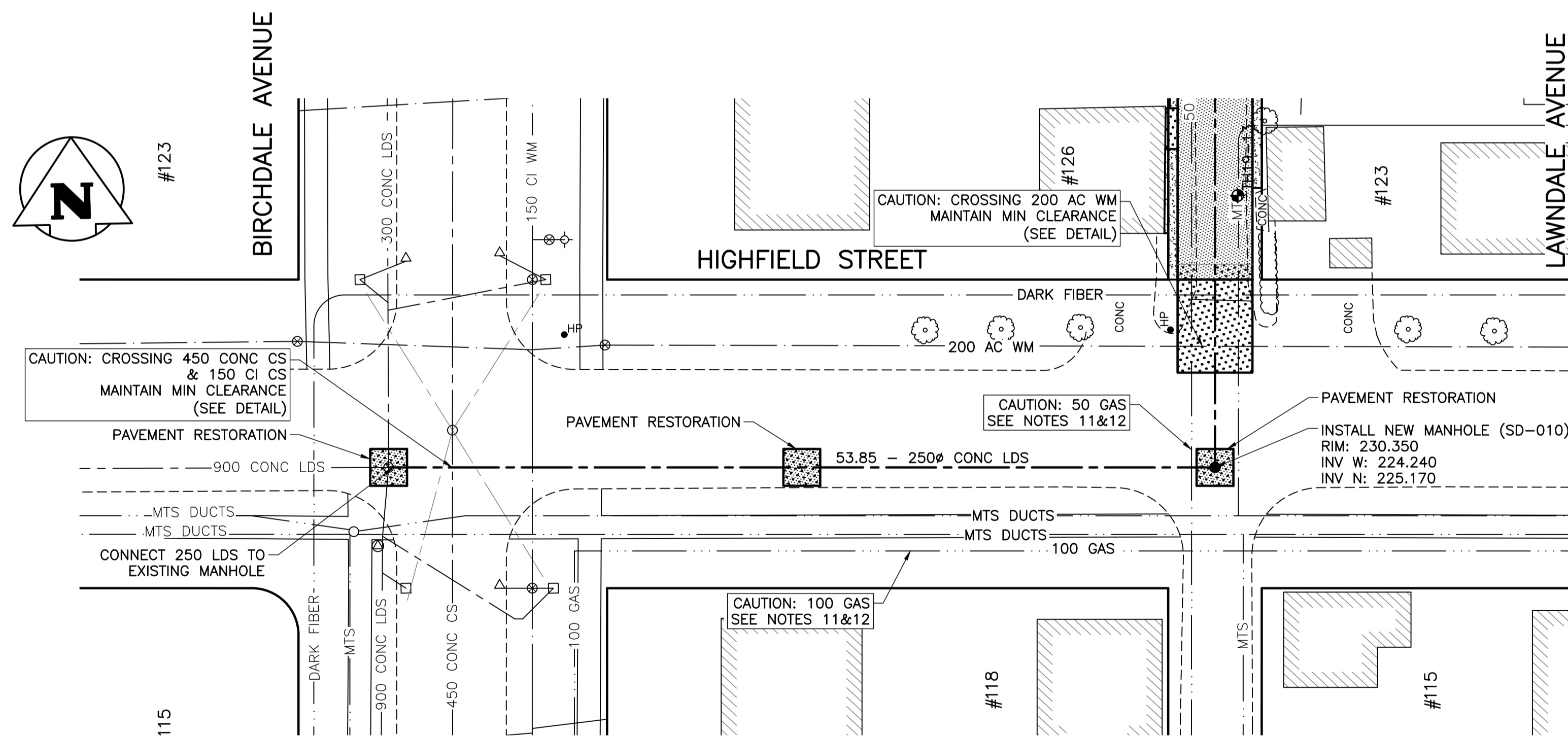
CHAINAGE IS ALONG THE SOUTH PROPERTY LINE OF HIGHFIELD STREET WITH 1+00 AT THE WEST LINE OF BIRCHDALE AVENUE

SEWER PROFILE
SCALE: 1:250 HOR: 1:50 VER



NOTES

1. STATION CHAINAGE IS BASED ON CENTERLINE OF ALLEY RIGHT OF WAY.
2. REGRADE EXISTING PRIVATE SIDEWALKS, APPROACHES & REAR OR SIDEYARDS AS DIRECTED.
3. INSTALLATION OF LIP CURBS AND THEIR EXTENTS TO BE DETERMINED BY THE CONTRACT ADMINISTRATOR ON SITE.
4. CONCRETE APPROACH RENEWALS TO BE REINFORCED IN ACCORDANCE WITH CW-3230, CW-3310, & SD-237.
5. INSTALL MODIFIED BARRIER CURB AT ALL ALLEY APPROACH RADII (SD-203B).
6. ALL EXISTING TREES TO BE PROTECTED THROUGHOUT CONSTRUCTION UNLESS OTHERWISE NOTED.
7. CONTACT THE CITY OF WINNIPEG GEOMATICS BRANCH IN ADVANCE OF CONSTRUCTION TO COORDINATE MONUMENT PROTECTION SERVICES (204)-918-1360.
8. CONFIRM THE LOCATION OF ALL UTILITIES PRIOR TO COMMENCING CONSTRUCTION.
9. LIGHT STANDARDS AND HYDRO POLES MAY REQUIRE TEMPORARY SUPPORT DURING CONSTRUCTION AT THE CONTRACTOR'S EXPENSE.
10. ISOLATE ALL POLES, BASES AND PILES WITHIN ALLEY RIGHT OF WAY (SD-228C).
11. NO VIBRATORY COMPACTION PERMITTED WITHIN 1.0M OF GAS MAINS OR DUCT BANKS.
12. NO WORKS, INCLUDING CONCRETE CUTTING OR BREAKING, TO BE UNDERTAKEN NEAR GAS LINES OR DUCT BANKS UNTIL DEPTH OF COVER IS DETERMINED AND A MANITOBA HYDRO SAFETY WATCH REPRESENTATIVE IS ON SITE.
13. PROVIDE SEWER INSPECTION FOR ALL NEW SEWER PIPE INSTALLATION, POINT REPAIRS, & ABANDONMENTS.
14. CONCRETE DEMOLITION AND REMOVAL WITHIN 3.0 METERS HORIZONTALLY OF THE LARGE DIAMETER WATER MAIN SHALL BE COMPLETED BY SAWCUTTING AND REMOVAL, OR BY THE USE OF HAND HELD JACKHAMMERS. USE OF MACHINE MOUNTED CONCRETE BREAKERS ABOVE THE LARGE DIAMETER WATER MAIN SHALL NOT BE PERMITTED.
15. DO NOT OPERATE VIBRATORY EQUIPMENT OVER OR WITHIN 3.0 METERS OF THE LARGE DIAMETER WATER MAIN CENTRELINE.



SEWER PLAN
SCALE: 1:250

PROPERTY LIMITS DELINEATION
 DELINEATION OF PROPERTY LIMITS AS SHOWN ON THIS DWG DOES NOT REPRESENT A "LEGAL SURVEY". KGS GROUP MAKES NO REPRESENTATION OR WARRANTY AS TO THE ACCURACY OF PROPERTY LIMITS DELINEATED ON THIS DWG, NOR ON THE DIMENSIONAL ACCURACY OF DWG FEATURES RELATIVE TO THOSE PROPERTY LIMITS.

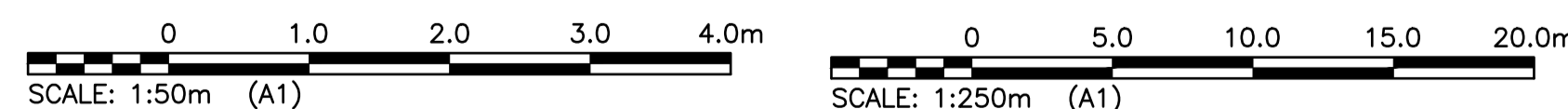
METRIC

WHOLE NUMBERS INDICATE MILLIMETRES
 DECIMALIZED NUMBERS INDICATE METRES



WARNING

1. NOTIFY THE GAS COMPANY OF THE PROPOSED LOCATION OF EXCAVATION.
2. TAKE PRECAUTION TO AVOID DAMAGE TO GAS COMPANY INSTALLATIONS.
3. SEE PROVINCIAL REGULATION 210/72 FOR DETAILS.



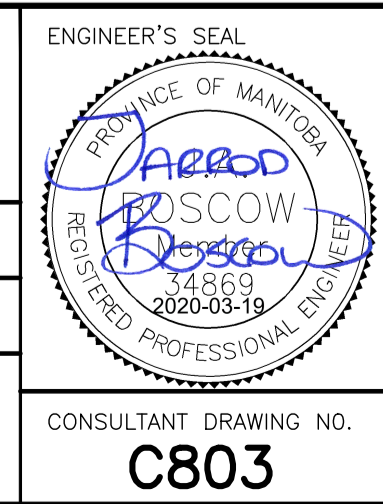
300_LDS	LAND DRAINAGE SEWER	300_LDS	- - x - -	FENCE				
250_WWS	WASTE WATER SEWER	250_WWS	+	TEST HOLE				
---	GAS	---	+	GUY WIRE				
---	HYDRO	---	+	LIGHT STANDARD				
---	M.T.S.	---	+	BACK OF CURB				
150_WM	WATERMAIN	150_WM	---	CONCRETE	X X	Q PROFILE	X X	
+	HYDRANT	+	+	ASPHALT	□ □	EDGE OF ALLEY LHS	□ □	
+	VALVE	+	+	SIDEWALK	▨ ▨	EDGE OF ALLEY RHS	▨ ▨	
○	MANHOLE	○	+	PROPERTY LINE	◇ ◇	N/W LANE P	◇ ◇	
□	CATCH BASIN	□	+	SURVEY BAR	+	S/E MEDIAN P	+	
▽	CURB INLET	▽	+	GEODETIC BENCHMARK	+	GARAGE/PARKING SLAB	+	
•	POLES	•	+	ELEVATION	(232.231)	WINDOW/DOOR SILL	TTT	
EXISTING	LEGEND-PLAN	PROPOSED	EXISTING	LEGEND-PLAN	PROPOSED	EXISTING	LEGEND-PROFILE	PROPOSED

LOCATION APPROVED UNDERGROUND STRUCTURES

SUPV. U/G STRUCTURES DATE COMMITTEE
 NOTE:
 LOCATION OF UNDERGROUND STRUCTURES AS SHOWN ARE BASED ON THE BEST INFORMATION AVAILABLE BUT NO GUARANTEE IS GIVEN THAT ALL EXISTING UTILITIES ARE SHOWN OR THAT THE GIVEN LOCATIONS ARE EXACT. CONFIRMATION OF EXISTENCE AND EXACT LOCATION OF ALL SERVICES MUST BE OBTAINED FROM THE INDIVIDUAL UTILITIES BEFORE PROCEEDING WITH CONSTRUCTION.

B.M. KGS_BASE	ELEV. 249.221
NO.	REVISIONS
DATE	BY
20/03/18	JB

KGS GROUP	
DESIGNED BY: JB	CHECKED BY: CR
DRAWN BY: IT	APPROVED BY: CR
HOR. SCALE: 1:250	RELEASED FOR CONSTRUCTION:
VERTICAL: VARIES	DATE: 2019-02-15



THE CITY OF WINNIPEG PUBLIC WORKS DEPARTMENT ENGINEERING DIVISION

PROJECT TITLE: **2019 ALLEY RENEWALS AND LOCAL IMPROVEMENT ALLEYS BIRCHDALE AVE / LAWNDALE AVE HIGHFIELD ST TO KIRKDALE ST SEWER WORKS**

SHEET 24 OF 24
 COMPUTER FILE NAME: 18-0107-016_ALLEYS
 CITY DRAWING NUMBER: -

CONSULTANT DRAWING NO. **C803**