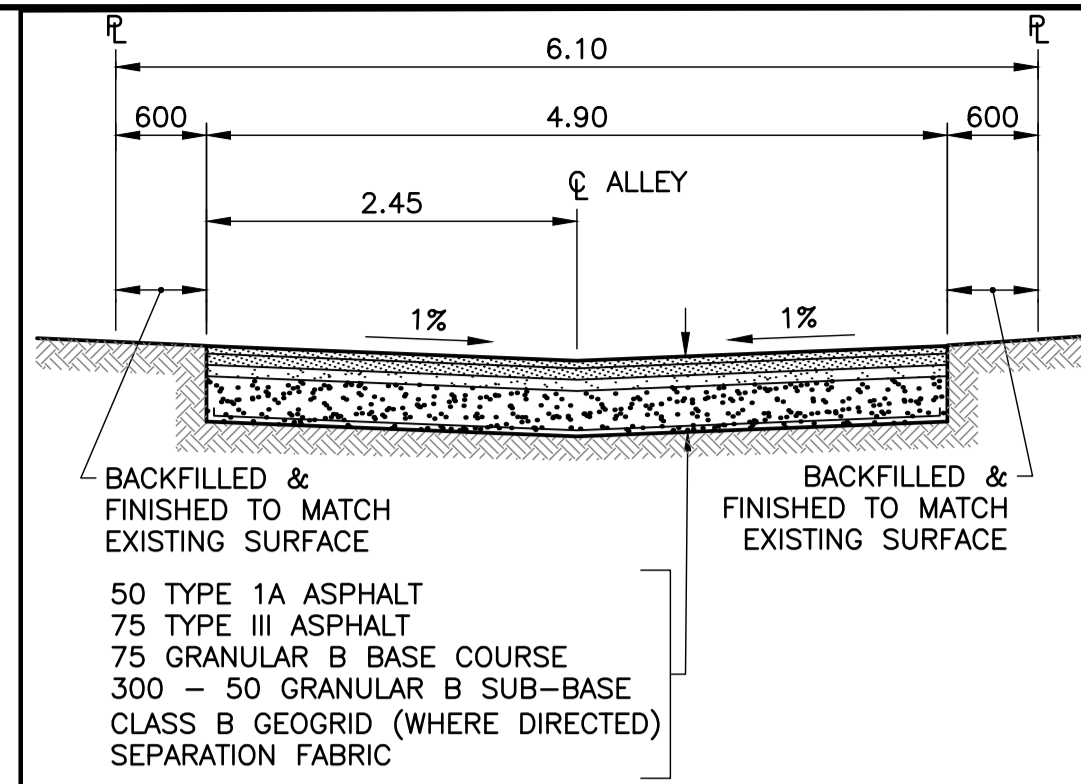
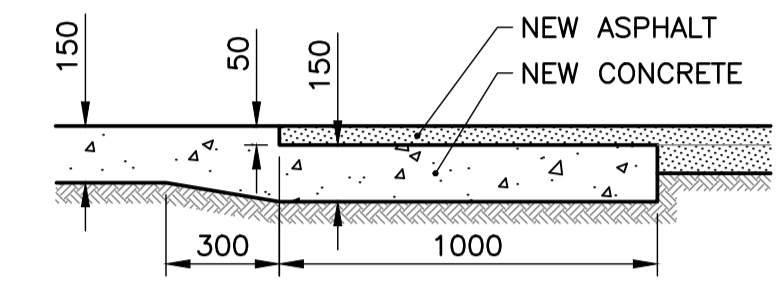


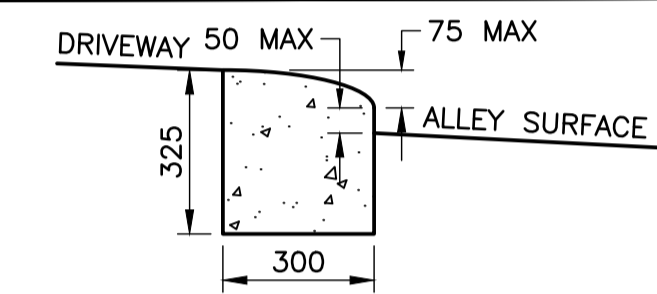
ALLEY PAVEMENT PROFILE
SCALE: 1:250 HOR: 1:10 VER



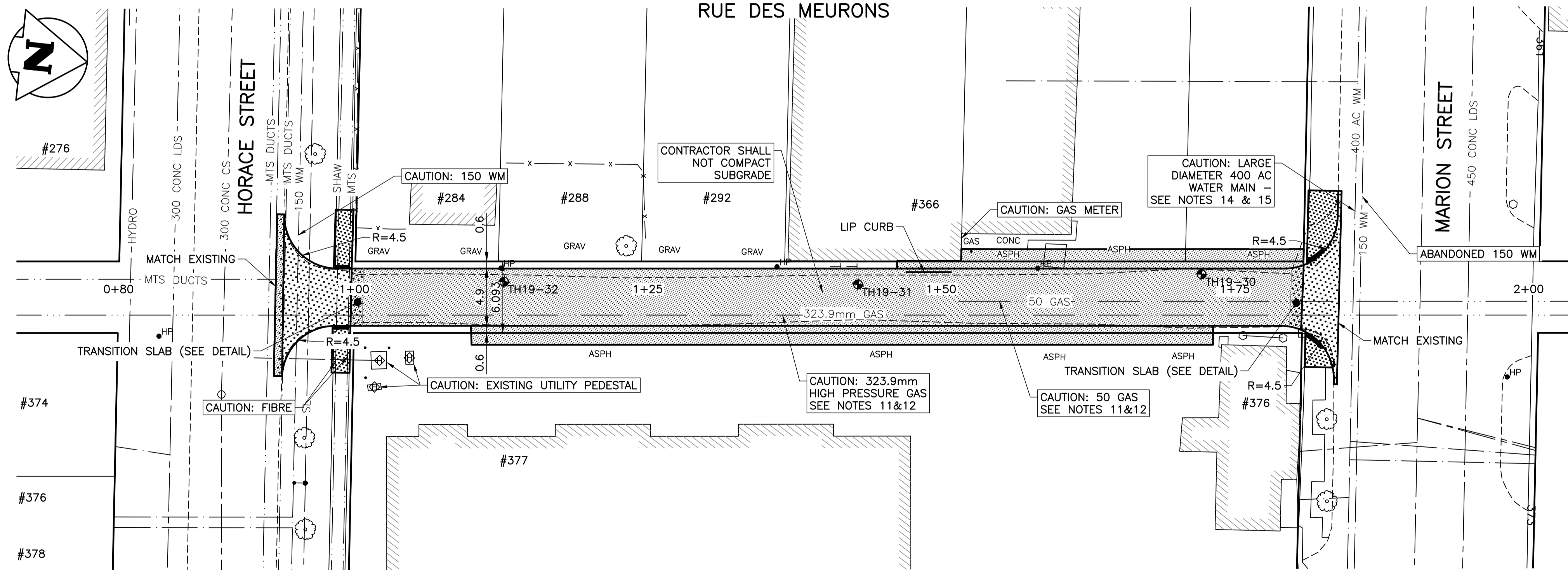
ASPHALT CROSS SECTION
SCALE: 1:50



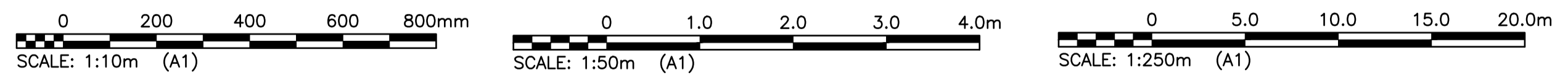
TRANSITION SLAB DETAIL
SCALE: 1:20



LIP CURB DETAIL
SCALE: 1:15



ALLEY PAVEMENT PLAN
SCALE: 1:250



NOTES

- STATION CHAINAGE IS BASED ON CENTERLINE OF ALLEY RIGHT OF WAY.
- REGRADE EXISTING PRIVATE SIDEWALKS, APPROACHES & REAR OR SIDEYARDS AS DIRECTED.
- INSTALLATION OF LIP CURBS AND THEIR EXTENTS TO BE DETERMINED BY THE CONTRACT ADMINISTRATOR ON SITE.
- CONCRETE APPROACH RENEWALS TO BE REINFORCED IN ACCORDANCE WITH CW-3230, CW-3310, & SD-237.
- INSTALL MODIFIED BARRIER CURB AT ALL ALLEY APPROACH RADII (SD-203B).
- ALL EXISTING TREES TO BE PROTECTED THROUGHOUT CONSTRUCTION UNLESS OTHERWISE NOTED.
- CONTACT THE CITY OF WINNIPEG GEOMATICS BRANCH IN ADVANCE OF CONSTRUCTION TO COORDINATE MONUMENT PROTECTION SERVICES (204)-918-1360.
- CONFIRM THE LOCATION OF ALL UTILITIES PRIOR TO COMMENCING CONSTRUCTION.
- LIGHT STANDARDS AND HYDRO POLES MAY REQUIRE TEMPORARY SUPPORT DURING CONSTRUCTION AT THE CONTRACTOR'S EXPENSE.
- ISOLATE ALL POLES, BASES AND PILES WITHIN ALLEY RIGHT OF WAY (SD-228C).
- NO VIBRATORY COMPACTION PERMITTED WITHIN 1.0M OF GAS MAINS OR DUCT BANKS.
- NO WORKS, INCLUDING CONCRETE CUTTING OR BREAKING, TO BE UNDERTAKEN NEAR GAS LINES OR DUCT BANKS UNTIL DEPTH OF COVER IS DETERMINED AND A MANITOBA HYDRO SAFETY WATCH REPRESENTATIVE IS ON SITE.
- PROVIDE SEWER INSPECTION FOR ALL NEW SEWER PIPE INSTALLATION, POINT REPAIRS, & ABANDONMENTS.
- CONCRETE DEMOLITION AND REMOVAL WITHIN 3 METERS HORIZONTALLY OF THE LARGE DIAMETER WATERMAIN SHALL BE COMPLETED BY SAWCUTTING AND REMOVAL, OR BY THE USE OF HAND HELD JACKHAMMERS. USE OF MACHINE MOUNTED CONCRETE BREAKERS ABOVE THE LARGE DIAMETER WATERMAIN SHALL NOT BE PERMITTED.
- DO NOT OPERATE VIBRATORY EQUIPMENT OVER OR WITHIN 3.0 METERS OF THE LARGE DIAMETER WATERMAIN CENTRELINE.
- THE WATER DISTRIBUTION SYSTEM IN THIS AREA IS CATHODICALLY PROTECTED. ANY DAMAGE TO THIS SYSTEM MUST BE REPORTED TO THE WATER AND WASTE DEPARTMENT IMMEDIATELY AND ALL COSTS, MATERIALS AND LABOUR ASSOCIATED WITH THE RESTORATION OF THIS SYSTEM WILL BE THE RESPONSIBILITY OF THE CONTRACTOR AND / OR CONSULTANT.

METRIC

WHOLE NUMBERS INDICATE MILLIMETRES
DECIMALIZED NUMBERS INDICATE METRES

PROPERTY LIMITS DELINEATION

DELINEATION OF PROPERTY LIMITS AS SHOWN ON THIS DWG DOES NOT REPRESENT A "LEGAL SURVEY". KGS GROUP MAKES NO REPRESENTATION OR WARRANTY AS TO THE ACCURACY OF PROPERTY LIMITS DELINEATED ON THIS DWG, NOR ON THE DIMENSIONAL ACCURACY OF DWG FEATURES RELATIVE TO THOSE PROPERTY LIMITS.

WARNING

- NOTIFY THE GAS COMPANY OF THE PROPOSED LOCATION OF EXCAVATION.
- TAKE PRECAUTION TO AVOID DAMAGE TO GAS COMPANY INSTALLATIONS.
- SEE PROVINCIAL REGULATION 210/72 FOR DETAILS.

ENGINEERS
GEOSCIENTISTS
MANITOBA
Certificate of Authorization
KGS Group
No. 245

THE CITY OF WINNIPEG
PUBLIC WORKS DEPARTMENT
ENGINEERING DIVISION

PROJECT TITLE: **2019 ALLEY RENEWALS AND LOCAL IMPROVEMENT ALLEYS DES MEURONS ST E ALLEY HORACE ST TO MARION ST STA. 0+80 TO 2+00**

SHEET **19** OF **24**

COMPUTER FILE NAME: **18-0107-016_ALLEYS**

CITY DRAWING NUMBER: **—**

LOCATION APPROVED UNDERGROUND STRUCTURES

B.M. KGS_BASE ELEV. 249.221

DESIGNED BY	JB	CHECKED BY	CR
DRAWN BY	KMM	APPROVED BY	CR
HOR. SCALE:	1:250	RELEASED FOR CONSTRUCTION:	
VERTICAL:	VARIABLE	DATE:	2019-02-15

NO. REVISIONS DATE BY

KGS GROUP

ENGINEER'S SEAL
PROVINCE OF MANITOBA
Jason Roscoe
REGISTERED PROFESSIONAL ENGINEER
14869
2020-03-18

CONSULTANT DRAWING NO. **C601**

300 LDS	LAND DRAINAGE SEWER	300 LDS	-x-x-	FENCE			
250 WWS	WASTE WATER SEWER	250 WWS	—+—+—	TEST HOLE			
---	GAS	---	—+—	GUY WIRE			
---	HYDRO	---	—+—	LIGHT STANDARD			
---	M.T.S.	---	—+—	BACK OF CURB			
150 WM	WATERMAIN	150 WM	—+—	CONCRETE	X-X	Q PROFILE	X-X
+	HYDRANT	+	+	ASPHALT	□-□	EDGE OF ALLEY LHS	□-□
○	VALVE	○	○	SIDEWALK	○-○	EDGE OF ALLEY RHS	○-○
○	MANHOLE	○	○	PROPERTY LINE	◇-◇	N/W LANE P	◇-◇
□	CATCH BASIN	□	+	SURVEY BAR	+	S/E MEDIAN P	+
▽	CURB INLET	▽	○	GEODETIC BENCHMARK	⊕	GARAGE/PARKING SLAB	⊕
•	POLES	•	○	ELEVATION	(232,231)	WINDOW/DOOR SILL	TTTT
EXISTING	LEGEND-PLAN	PROPOSED	EXISTING	LEGEND-PROFILE	PROPOSED	EXISTING	LEGEND-PROFILE

NOTE: LOCATION OF UNDERGROUND STRUCTURES AS SHOWN ARE BASED ON THE BEST INFORMATION AVAILABLE BUT NO GUARANTEE IS GIVEN THAT ALL EXISTING UTILITIES ARE SHOWN OR THAT THE GIVEN LOCATIONS ARE EXACT. CONFIRMATION OF EXISTENCE AND EXACT LOCATION OF ALL SERVICES MUST BE OBTAINED FROM THE INDIVIDUAL UTILITIES BEFORE PROCEEDING WITH CONSTRUCTION.

File: B:\Projects\2019\18-0107-016\18-0107-016_ALLEYS - Tab: C601 Plotted By: gloewen 20/03/18 [Wed 8:22am]
 A1 (C:\Users\jroscoe\OneDrive\Documents\18-0107-016\DWG\Mun\18-0107-016_ALLEYS - Tab: C601) SCALE: 1:1