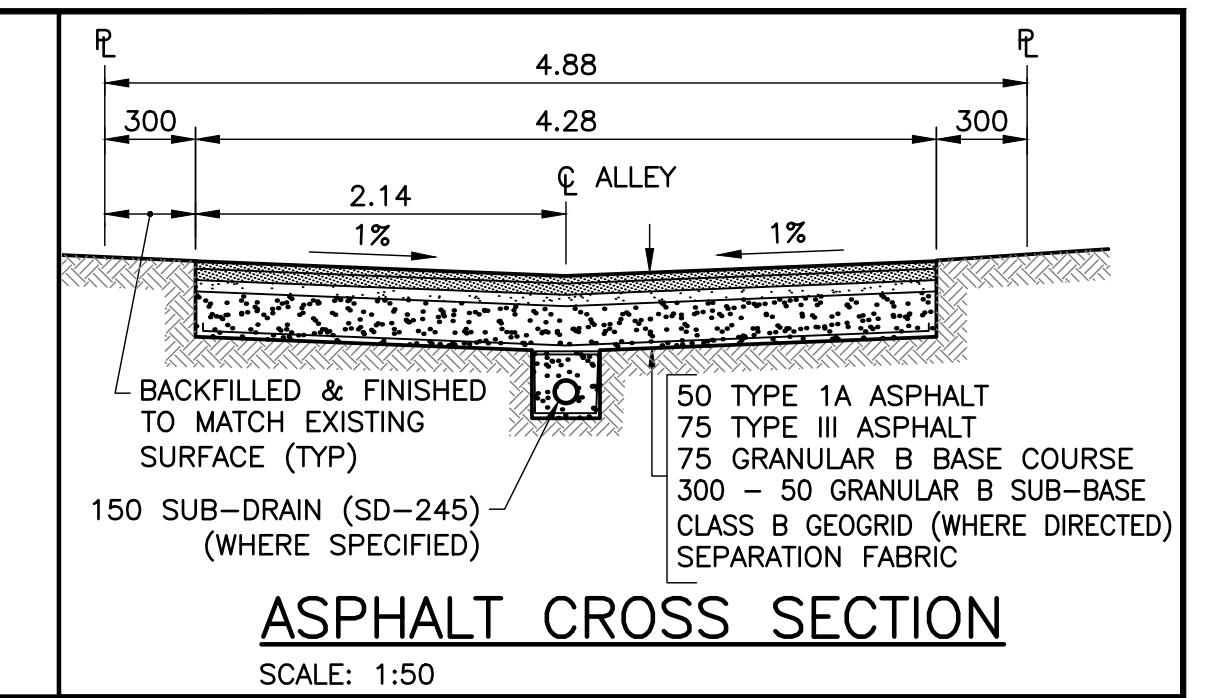
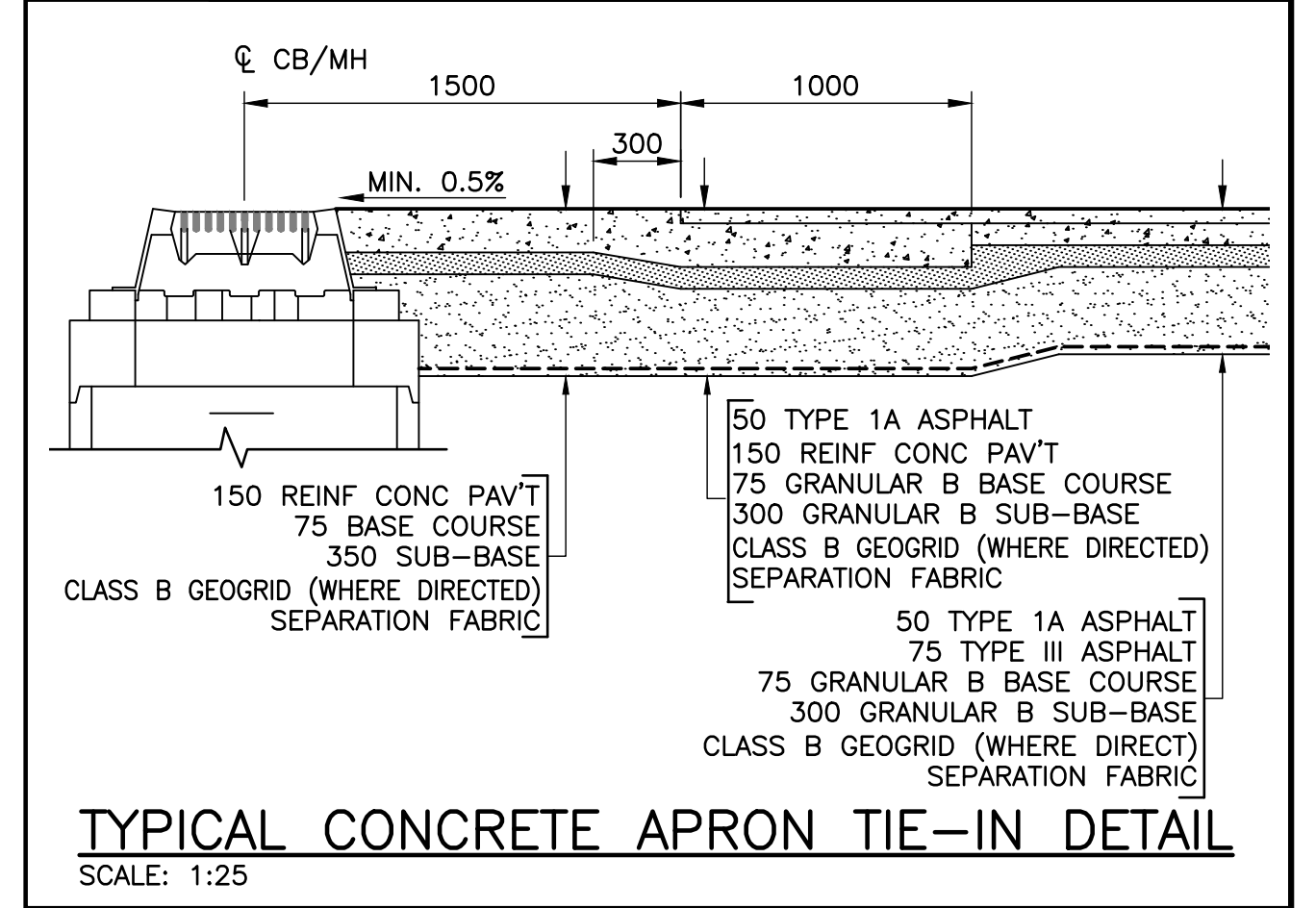


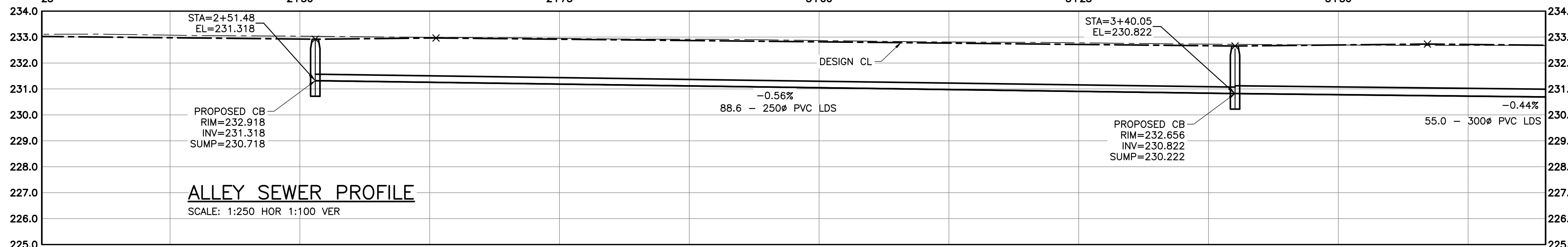
ALLEY PAVEMENT PROFILE
SCALE: 1:250 HOR 1:10 VER



ASPHALT CROSS SECTION
SCALE: 1:50

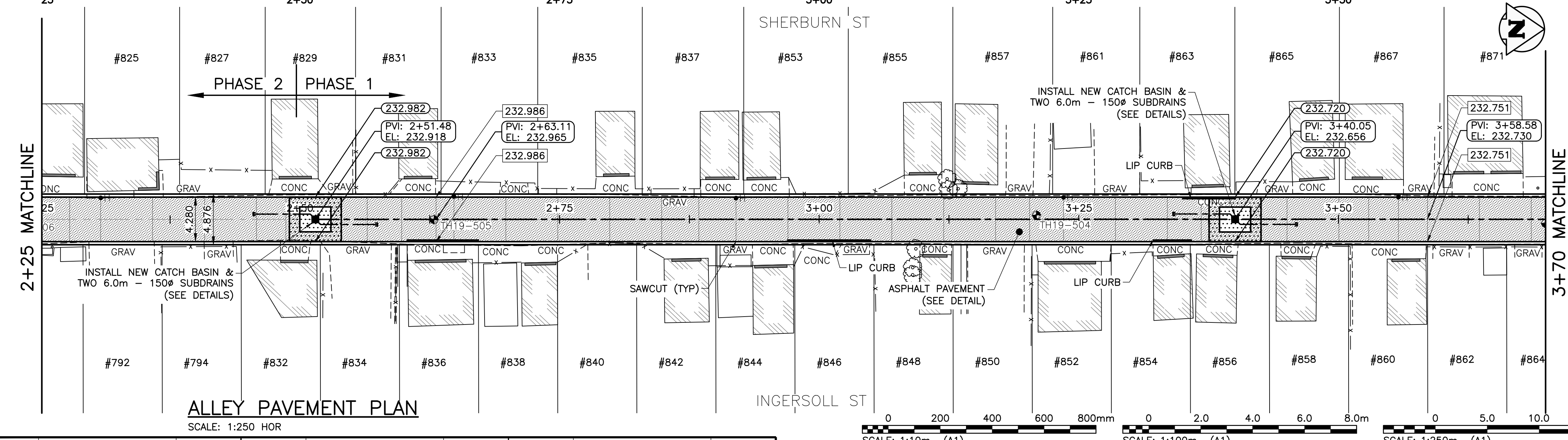


TYPICAL CONCRETE APRON TIE-IN DETAIL
SCALE: 1:25



ALLEY SEWER PROFILE
SCALE: 1:250 HOR 1:100 VER

- NOTES**
1. STATION CHAINAGE IS BASED ON CENTERLINE OF ALLEY RIGHT OF WAY.
 2. ALLEY TO BE CONSTRUCTED IN PHASES AS SHOWN.
 3. REGRADE EXISTING PRIVATE SIDEWALKS, APPROACHES & REAR OR SIDEYARDS AS DIRECTED.
 4. INSTALLATION OF LIP CURBS AND THEIR EXTENTS TO BE DETERMINED BY THE CONTRACT ADMINISTRATOR ON SITE.
 5. CONCRETE APPROACH RENEWALS TO BE REINFORCED IN ACCORDANCE WITH CW-3230, CW-3310, & SD-237.
 6. INSTALL MODIFIED BARRIER CURB AT ALL ALLEY APPROACH RADII (SD-203B).
 7. ALL EXISTING TREES TO BE PROTECTED THROUGHOUT CONSTRUCTION UNLESS OTHERWISE NOTED.
 8. CONTACT THE CITY OF WINNIPEG GEOMATICS BRANCH IN ADVANCE OF CONSTRUCTION TO COORDINATE MONUMENT PROTECTION SERVICES (204)-918-1360.
 9. CONFIRM THE LOCATION OF ALL UTILITIES PRIOR TO COMMENCING CONSTRUCTION.
 10. LIGHT STANDARDS AND HYDRO POLES MAY REQUIRE TEMPORARY SUPPORT DURING CONSTRUCTION AT THE CONTRACTOR'S EXPENSE.
 11. ISOLATE ALL POLES, BASES AND PILES WITHIN ALLEY RIGHT OF WAY (SD-228C).
 12. NO VIBRATORY COMPACTION PERMITTED WITHIN 1.0M OF GAS MAINS OR DUCT BANKS.
 13. NO WORKS, INCLUDING CONCRETE CUTTING OR BREAKING, TO BE UNDERTAKEN NEAR GAS LINES OR DUCT BANKS UNTIL DEPTH OF COVER IS DETERMINED AND A MANITOBA HYDRO SAFETY WATCH REPRESENTATIVE IS ON SITE.
 14. PROVIDE SEWER INSPECTION FOR ALL NEW SEWER PIPE INSTALLATION, POINT REPAIRS & ABANDONMENTS.



ALLEY PAVEMENT PLAN
SCALE: 1:250 HOR

PROPERTY LIMITS DELINEATION

DELINEATION OF PROPERTY LIMITS AS SHOWN ON THIS DWG DOES NOT REPRESENT A "LEGAL SURVEY". KGS GROUP MAKES NO REPRESENTATION OR WARRANTY AS TO THE ACCURACY OF PROPERTY LIMITS DELINEATED ON THIS DWG, NOR ON THE DIMENSIONAL ACCURACY OF DWG FEATURES RELATIVE TO THOSE PROPERTY LIMITS.

METRIC
WHOLE NUMBERS INDICATE MILLIMETRES
DECIMALIZED NUMBERS INDICATE METRES

WARNING

1. NOTIFY THE GAS COMPANY OF THE PROPOSED LOCATION OF EXCAVATION.
2. TAKE PRECAUTION TO AVOID DAMAGE TO GAS COMPANY INSTALLATIONS.
3. SEE PROVINCIAL REGULATION 210/72 FOR DETAILS.

File: B:\Projects\2019\18-0107-017\Drawings\18-0107-017_CALL - TabC502.dwg Plotted By: gloewen 20/03/18 [Wed 8:55am]
 A1 (C:\Users\jlb\OneDrive\Documents\18-0107-017\Drawings\18-0107-017_CALL - TabC502.dwg) SCALE: 1:1

300_LDS	LAND DRAINAGE SEWER	300_LDS	- - x - -	FENCE	
250_WWS	WASTE WATER SEWER	250_WWS	+	TEST HOLE	
---	GAS	---	→	GUY WIRE	
---	HYDRO	---	→	LIGHT STANDARD	
---	M.T.S.	---	→	BACK OF CURB	
150_WM	WATER MAIN	150_WM	---	CONCRETE	X X
+	HYDRANT	+	+	ASPHALT	□ □
⊗	VALVE	⊗	⊗	SIDEWALK	○ - - ○
○	MANHOLE	○	○	PROPERTY LINE	◇ ◇
□	CATCH BASIN	□	+	SURVEY BAR	+
▽	CURB INLET	▽	⊗	GEODETIC BENCHMARK	⊗
•	POLES	•	231.33	ELEVATION	(232.231)
EXISTING	LEGEND-PLAN	PROPOSED	EXISTING	LEGEND-PROFILE	PROPOSED

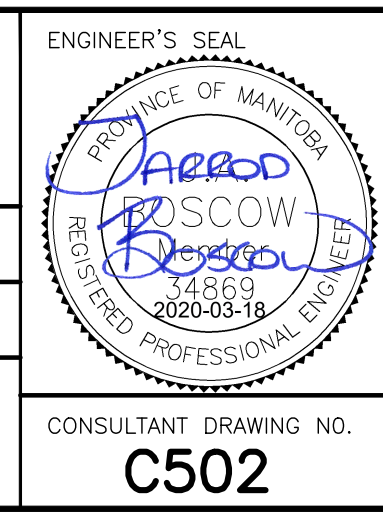
LOCATION APPROVED UNDERGROUND STRUCTURES

SUPV. U/G STRUCTURES COMMITTEE DATE

NOTE:
LOCATION OF UNDERGROUND STRUCTURES AS SHOWN ARE BASED ON THE BEST INFORMATION AVAILABLE BUT NO GUARANTEE IS GIVEN THAT ALL EXISTING UTILITIES ARE SHOWN OR THAT THE GIVEN LOCATIONS ARE EXACT. CONFIRMATION OF EXISTENCE AND EXACT LOCATION OF ALL SERVICES MUST BE OBTAINED FROM THE INDIVIDUAL UTILITIES BEFORE PROCEEDING WITH CONSTRUCTION.

B.M.	KGS_BASE	
ELEV.	249.221	
NO.	REVISIONS	DATE BY
0	ISSUED FOR TENDER	20/03/18 JB

KGS GROUP	
DESIGNED BY	JB
CHECKED BY	CR
DRAWN BY	JLF
APPROVED BY	CR
HOR. SCALE:	1:250
VERTICAL:	VARIES
RELEASED FOR CONSTRUCTION:	
DATE	2019-02-15



THE CITY OF WINNIPEG PUBLIC WORKS DEPARTMENT ENGINEERING DIVISION

PROJECT TITLE: **2019 ALLEY RENEWALS AND LOCAL IMPROVEMENT ALLEYS SHERBURN ST/INGERSOLL ST ELLICE AVE TO SARGENT AVE STA 2+25 TO STA 3+70**

SHEET **17** OF **24**

COMPUTER FILE NAME: **18-0107-017_CALL**

CITY DRAWING NUMBER: **C502**

CONSULTANT DRAWING NO.: **C502**