

- NOTES**
- STATION CHAINAGE IS BASED ON CENTERLINE OF ALLEY RIGHT OF WAY.
 - ALLEY TO BE CONSTRUCTED IN PHASES AS SHOWN.
 - REGRADE EXISTING PRIVATE SIDEWALKS, APPROACHES & REAR OR SIDEYARDS AS DIRECTED.
 - INSTALLATION OF LIP CURBS AND THEIR EXTENTS TO BE DETERMINED BY THE CONTRACT ADMINISTRATOR ON SITE.
 - CONCRETE APPROACH RENEWALS TO BE REINFORCED IN ACCORDANCE WITH CW-3230, CW-3310, & SD-237.
 - INSTALL MODIFIED BARRIER CURB AT ALL ALLEY APPROACH RADII (SD-203B).
 - ALL EXISTING TREES TO BE PROTECTED THROUGHOUT CONSTRUCTION UNLESS OTHERWISE NOTED.
 - CONTACT THE CITY OF WINNIPEG GEOMATICS BRANCH IN ADVANCE OF CONSTRUCTION TO COORDINATE MONUMENT PROTECTION SERVICES (204)-918-1360.
 - CONFIRM THE LOCATION OF ALL UTILITIES PRIOR TO COMMENCING CONSTRUCTION.
 - LIGHT STANDARDS AND HYDRO POLES MAY REQUIRE TEMPORARY SUPPORT DURING CONSTRUCTION AT THE CONTRACTOR'S EXPENSE.
 - ISOLATE ALL POLES, BASES AND PILES WITHIN ALLEY RIGHT OF WAY (SD-228C).
 - NO VIBRATORY COMPACTION PERMITTED WITHIN 1.0M OF GAS MAINS OR DUCT BANKS.
 - NO WORKS, INCLUDING CONCRETE CUTTING OR BREAKING, TO BE UNDERTAKEN NEAR GAS LINES OR DUCT BANKS UNTIL DEPTH OF COVER IS DETERMINED AND A MANITOBA HYDRO SAFETY WATCH REPRESENTATIVE IS ON SITE.
 - PROVIDE SEWER INSPECTION FOR ALL NEW SEWER PIPE INSTALLATION, POINT REPAIRS & ABANDONMENTS.
 - ALL CONCRETE JOINTING TO BE AS INDICATED BY THE CONTRACT ADMINISTRATOR ON SITE. CRITICAL JOINT LOCATIONS WILL BE LOCATED AT EVERY GRADE BREAK, STREET LIGHT OR HYDRO POLE ISOLATION, UNDERGROUND STRUCTURE ISOLATION, AND ANY INTERSECTING ALLEY. GENERAL JOINT SPACING REQUIREMENTS ARE AS INDICATED ON SD-219.
 - SEE DETAILS ON SHEET 12 FOR AQUEDUCT, FEEDERMAIN AND DUCT BANK CROSSINGS.

PROPERTY LIMITS DELINEATION

DELINEATION OF PROPERTY LIMITS AS SHOWN ON THIS DWG DOES NOT REPRESENT A "LEGAL SURVEY". KGS GROUP MAKES NO REPRESENTATION OR WARRANTY AS TO THE ACCURACY OF PROPERTY LIMITS DELINEATED ON THIS DWG, NOR ON THE DIMENSIONAL ACCURACY OF DWG FEATURES RELATIVE TO THOSE PROPERTY LIMITS.

METRIC

WHOLE NUMBERS INDICATE MILLIMETRES
DECIMAL NUMBERS INDICATE METRES

ENGINEERS GEOSCIENTISTS MANITOBA

Certificate of Authorization
KGS Group
No. 245

WARNING

- NOTIFY THE GAS COMPANY OF THE PROPOSED LOCATION OF EXCAVATION.
- TAKE PRECAUTION TO AVOID DAMAGE TO GAS COMPANY INSTALLATIONS.
- SEE PROVINCIAL REGULATION 210/72 FOR DETAILS.

File: B:\Projects\2018\18-0107-017\DWG\Mun\18-0107-017_CALL - Tab:C304 Plotted By: gloewen 20/03/18 [Wed 8:51am] At: C:\Users\jlb\OneDrive\Documents\18-0107-017_CALL - Tab:C304.rvt SCALE: 1:1

300 LBS	LAND DRAINAGE SEWER	300 LBS	---	FENCE
250 WWS	WASTE WATER SEWER	250 WWS	→	TEST HOLE
---	GAS	---	→	GUY WIRE
---	HYDRO	---	→	LIGHT STANDARD
---	M.T.S.	---	→	BACK OF CURB
150 WM	WATER MAIN	150 WM	---	CONCRETE
⊕	HYDRANT	⊕	---	ASPHALT
⊕	VALVE	⊕	---	SIDEWALK
○	MANHOLE	○	---	PROPERTY LINE
□	CATCH BASIN	□	---	SURVEY BAR
▽	CURB INLET	▽	---	GEODETTIC BENCHMARK
•	POLES	•	---	ELEVATION
---	EXISTING	---	---	PROPOSED

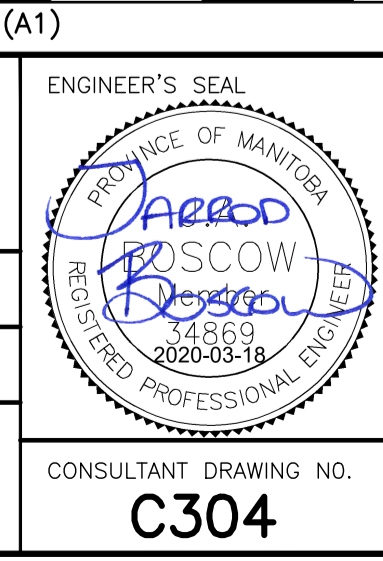
LOCATION APPROVED UNDERGROUND STRUCTURES

Supv. U/G STRUCTURES DATE COMMITTEE

NOTE:
LOCATION OF UNDERGROUND STRUCTURES AS SHOWN ARE BASED ON THE BEST INFORMATION AVAILABLE BUT NO GUARANTEE IS GIVEN THAT ALL EXISTING UTILITIES ARE SHOWN OR THAT THE GIVEN LOCATIONS ARE EXACT. CONFIRMATION OF EXISTENCE AND EXACT LOCATION OF ALL SERVICES MUST BE OBTAINED FROM THE INDIVIDUAL UTILITIES BEFORE PROCEEDING WITH CONSTRUCTION.

B.M.	KGS_BASE	ELEV.	249.221
0	ISSUED FOR TENDER	20/03/18	JB
NO.	REVISIONS	DATE	BY

KGS GROUP	
DESIGNED BY: JB	CHECKED BY: CR
DRAWN BY: JLF	APPROVED BY: CR
HOR. SCALE: 1:250	RELEASED FOR CONSTRUCTION:
VERTICAL: VARIES	DATE: 2019-02-15



THE CITY OF WINNIPEG PUBLIC WORKS DEPARTMENT ENGINEERING DIVISION

PROJECT TITLE: **2019 ALLEY RENEWALS AND LOCAL IMPROVEMENT ALLEYS SHERBROOK ST/FURBY ST PORTAGE AVE TO ELLICE AVE STA 4+18 TO NORTH LEG**

SHEET **10** OF **24**

COMPUTER FILE NAME: **18-0107-017_CALL**

CITY DRAWING NUMBER: **---**

CONSULTANT DRAWING NO. **C304**