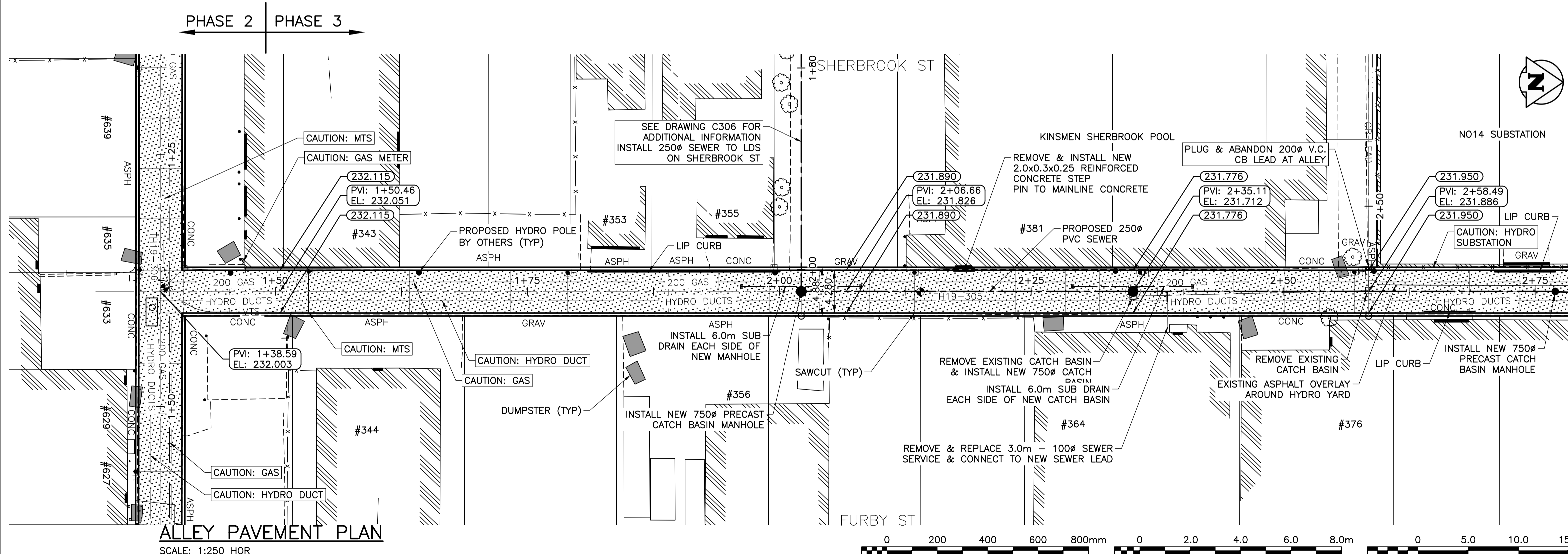
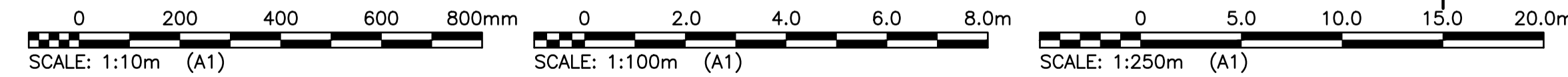


- NOTES**
- STATION CHAINAGE IS BASED ON CENTERLINE OF ALLEY RIGHT OF WAY.
 - ALLEY TO BE CONSTRUCTED IN PHASES AS SHOWN.
 - REGRADE EXISTING PRIVATE SIDEWALKS, APPROACHES & REAR OR SIDEYARDS AS DIRECTED.
 - INSTALLATION OF LIP CURBS AND THEIR EXTENTS TO BE DETERMINED BY THE CONTRACT ADMINISTRATOR ON SITE.
 - CONCRETE APPROACH RENEWALS TO BE REINFORCED IN ACCORDANCE WITH CW-3230, CW-3310, & SD-237.
 - INSTALL MODIFIED BARRIER CURB AT ALL ALLEY APPROACH RADII (SD-203B).
 - ALL EXISTING TREES TO BE PROTECTED THROUGHOUT CONSTRUCTION UNLESS OTHERWISE NOTED.
 - CONTACT THE CITY OF WINNIPEG GEOMATICS BRANCH IN ADVANCE OF CONSTRUCTION TO COORDINATE MONUMENT PROTECTION SERVICES (204)-918-1360.
 - CONFIRM THE LOCATION OF ALL UTILITIES PRIOR TO COMMENCING CONSTRUCTION.
 - LIGHT STANDARDS AND HYDRO POLES MAY REQUIRE TEMPORARY SUPPORT DURING CONSTRUCTION AT THE CONTRACTOR'S EXPENSE.
 - ISOLATE ALL POLES, BASES AND PILES WITHIN ALLEY RIGHT OF WAY (SD-228C).
 - NO VIBRATORY COMPACTION PERMITTED WITHIN 1.0M OF GAS MAINS OR DUCT BANKS.
 - NO WORKS, INCLUDING CONCRETE CUTTING OR BREAKING, TO BE UNDERTAKEN NEAR GAS LINES OR DUCT BANKS UNTIL DEPTH OF COVER IS DETERMINED AND A MANITOBA HYDRO SAFETY WATCH REPRESENTATIVE IS ON SITE.
 - PROVIDE SEWER INSPECTION FOR ALL NEW SEWER PIPE INSTALLATION, POINT REPAIRS & ABANDONMENTS.
 - ALL CONCRETE JOINTING TO BE AS INDICATED BY THE CONTRACT ADMINISTRATOR ON SITE. CRITICAL JOINT LOCATIONS WILL BE LOCATED AT EVERY GRADE BREAK, STREET LIGHT OR HYDRO POLE ISOLATION, UNDERGROUND STRUCTURE ISOLATION, AND ANY INTERSECTING ALLEY. GENERAL JOINT SPACING REQUIREMENTS ARE AS INDICATED ON SD-219.
 - SEE DETAILS ON SHEET 12 FOR AQUEDUCT, FEEDERMAIN AND DUCT BANK CROSSINGS.



2+78 MATCHLINE



METRIC
WHOLE NUMBERS INDICATE MILLIMETRES
DECIMALIZED NUMBERS INDICATE METRES

WARNING

- NOTIFY THE GAS COMPANY OF THE PROPOSED LOCATION OF EXCAVATION.
- TAKE PRECAUTION TO AVOID DAMAGE TO GAS COMPANY INSTALLATIONS.
- SEE PROVINCIAL REGULATION 210/72 FOR DETAILS.

300_LDS	LAND DRAINAGE SEWER	300_LDS	---	FENCE
250_WWS	WASTE WATER SEWER	250_WWS	---x---	TEST HOLE
---	GAS	---	---	GUY WIRE
---	HYDRO	---	---	LIGHT STANDARD
---	M.T.S.	---	---	BACK OF CURB
150_WM	WATER MAIN	150_WM	---	CONCRETE
---	HYDRANT	---	---	ASPHALT
---	VALVE	---	---	SIDEWALK
---	MANHOLE	---	---	PROPERTY LINE
---	CATCH BASIN	---	---	SURVEY BAR
---	CURB INLET	---	---	GEODETIC BENCHMARK
---	POLES	---	---	ELEVATION
EXISTING	LEGEND-PLAN	PROPOSED	EXISTING	LEGEND-PROFILE

LOCATION APPROVED UNDERGROUND STRUCTURES

B.M. KGS_BASE
ELEV. 249.221

DESIGNED BY: JB
CHECKED BY: CR

DRAWN BY: JLF
APPROVED BY: CR

HOR. SCALE: 1:250
VERTICAL: VARIES

RELEASSED FOR CONSTRUCTION: DATE

CONSULTANT DRAWING NO. C302

KGS GROUP

ENGINEER'S SEAL
PROVINCE OF MANITOBA
AARON BOSCOV
REGISTERED PROFESSIONAL ENGINEER
14869
2020-03-18

THE CITY OF WINNIPEG
PUBLIC WORKS DEPARTMENT
ENGINEERING DIVISION

PROJECT TITLE
2019 ALLEY RENEWALS AND LOCAL IMPROVEMENT ALLEYS
SHERBROOK ST/FURBY ST
PORTAGE AVE TO ELLICE AVE
SOUTH LEG TO STA 2+78

SHEET OF
08 OF **24**

COMPUTER FILE NAME
18-0107-017_CALL

CITY DRAWING NUMBER

File: B:\Projects\2018\18-0107-017_CALL - TabC302 Plotted By: gloewen 20/03/18 [Wed 8:50am]
 A1 (C:\Users\jlf\OneDrive\Documents\18-0107-017_CALL - TabC302) SCALE: 1:1